

the

PERKOLATOR

1938



Presenting the...

PERKOLATOR

For Nineteen Thirty-eight

YEAR BOOK OF THE
PERKINSTON JUNIOR
COLLEGE, PERKINSTON,
MISSISSIPPI

Virginia Nash
E D I T O R

Warren Oliver
B U S I N E S S
M A N A G E R

CONTENTS

- ADMINISTRATION
- CLASSES
- FEATURES
- ACTIVITIES
- ATHLETICS



ALMA MATER

Way down south there's a school that we all know,
Where the winds from the gulf doth ever blow.
'Mong the pines so stately and so tall
We listen to your call,
We love you best of all.

Fame was thine through the years of the past,
And we know thy name shall ever last.
Thou art noble, proud, and true,
Oh, Perkinson, we all love you!



OUR SUPERINTENDENT

Through his cooperation many things have been made possible; the ordered daily life of the campus, the more imposing steps in the advancement of the school. The unfailing concern of our superintendent and his sincere interest in the student has won for him the deepest admiration and respect both of the student body and the people of our counties.



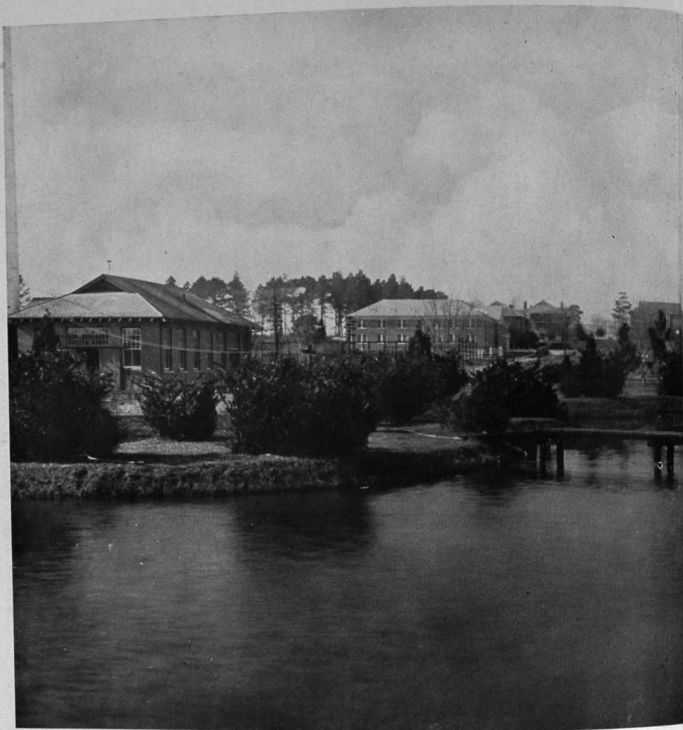
DEDICATION

MRS. JULIA SLAY

To her life of courage, love, devotion and unselfishness, to one who is rendering a high service to Perkinson and its student body. To a motherly dean of women, we lovingly dedicate this volume of *The Perkolator*.

COACH L. R. WEEKS

To one who loves Perkinson with an earnest fervor, to one who has gained the admiration and fellowship of the entire student body and from whom we seek council and courage, this volume of *The Perkolator* is sincerely dedicated.



... THE CAMPUS

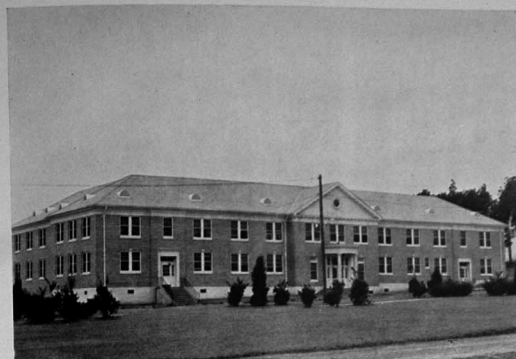


*ADMINISTRATION
BUILDING*

DORMITORY



GYMNASIUM



HARRISON HALL

GIRLS' LOBBY



TYPICAL ROOM



The BOARD of TRUSTEES

President

VINSON B. SMITH, SR.

Gulfport

Secretary

J. E. ROBERSON

Wiggins

Vice-President

H. P. HEIDELBERG

Pascagoula

W. LUTHER BLACKLEDGE	- - - -	Saucier
M. A. COLMER	- - - -	Howison
J. K. MILNER	- - - -	Gulfport
J. L. LADNER	- - - -	Gulfport
VICTOR PRINGLE	- - - -	Biloxi
T. W. LOTT	- - - -	Wiggins
J. N. DEDEAUX	- - - -	Perkinston
D. E. SMITH	- - - -	Perkinston
ELLIS CARRAWAY	- - - -	Wiggins
G. W. BRELAND	- - - -	Perkinston
M. B. CUMBEST	- - - -	Escatawpa
E. E. FLURRY	- - - -	Perkinston
O. H. MARTIN	- - - -	Moss Point
MARY O'KEEFE	- - - -	Ocean Springs
A. F. MEGEHEE	- - - -	Pascagoula



ADMINISTRATION



MR. A. I. REXINGER, B.S.
Social Science, Athletics



MISS MARY ELEANOR JOHNSTON, B.S., M.A.
Home Economics

MISS LORAIN GODBOLD, B.M.
Music, Glee Club



MISS GRACE FRAZIER, B.A., M.A.
Language

MR. W. G. GREGORY, B.A., M.A.
Mathematics



MRS. ROSE MCELROY, B.A., B.S., M.A.
Librarian

MISS EDNA ELLEN HANEY, B.A., M.A.
English



MISS INA MAE HART, B.A.
Commercial

MISS DOROTHY BROWN, B.A., M.A.
English



MR. STANLEY BEERS, B.A.
Mathematics, Band

MISS CLAUDIA ANNE THOMBS, B.A.
Physical Education

The FACULTY

MR. C. O. HINTON, Ph.G., B.S., M.S.
Chemistry

MR. D. D. O'NEAL, B.A., M.A.
Social Science, Athletics

MR. F. O. PARSONS, B.A., M.A.
Agriculture

MR. B. P. RUSSUM, B.S.
Education, Registrar

MR. L. P. INGRAM, B.S.
Science

MR. S. M. WALKER, B.S., M.A.
Science

MRS. L. R. WEEKS
Dietitian

MISS BILL DAVID
Secretary

REVEREND RIDGEWAY

REVEREND R. H. CAMPBELL

MR. A. S. HUNT
Bookkeeper

REVEREND FRANCIS MCCOLLAM



CLASS OFFICERS

SOPHOMORES

FRANK FOSTER - - - - - President
RICHARD LEWIS - - - - - Vice-President
BRYCE McMAHAN - - - - - Secretary and Treasurer

FRESHMEN

REGINALD SWITZER - - - - - President
DOROTHY COVINGTON - - - - - Vice-President
JEWELL WILLIAMS - - - - - Secretary and Treasurer

SENIORS

JOE THOMPSON - - - - - President
FRANK DOUBLEDAY - - - - - Vice-President

JUNIORS

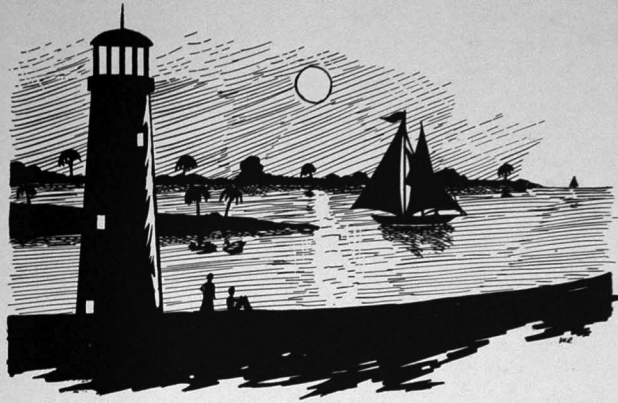
HOWARD POLLOCK - - - - - President
JEAN PARKER - - - - - Vice-President

SOPHOMORES

GLENN KEMP - - - - - President
TERRELL LOPER - - - - - Vice-President
JAMES PALENCIA - - - - - Secretary and Treasurer

FRESHMEN

FRANK RUSSUM - - - - - President
LEE ROY WEEKS - - - - - Vice-President
WILMA PROFITT - - - - - Secretary
ED COLMER - - - - - Treasurer



SOPHOMORES

The SOPHOMORES



MARY BABUCHNA - - - - - Perkinson
Y. W. C. A., International Relations, Home Ec.
Club.

HOYT BLACKWELL - - - - - Perkinson



JAMES BOLTON - - - - - Somerville, Tenn.
Y. M. C. A., "P" Club, Football, Baseball.

MILDRED BRELAND - - - - - Gulfport
Glee Club '37, '38, Home Ec. Club '37, '38, Y. W.
C. A. '37, '38, Quartet '37, State Exam in Foods
'38, Education '37, (First Place.)



MARIE BRANDT - - - - - Pass Christian
Band '37, '38, Home Ec. Club '37, Sec't '38, Lan-
guage Club, Vice-President '37, '38, Y. W. C. A.
'37, '38, State Exam in Spanish '37, (First Place)
'38, Staff '38.

HORACE LOWERY - - - - - Lyman
Y. M. C. A. '37, '38, Baseball '37.



JOE BREWER - - - - - Kosciusko
Y. M. C. A. '37, President '38, Band '37, '38, Glee
Club '37, '38, Orchestra '38, Student Council '37.

HAZEL BRIDGE - - - - - Gulfport
Y. W. C. A. '38, Basketball '37, '38, (Lettered),
B. S. U. '38, "P" Club.

The SOPHOMORES



BOWEN BRIGHT - - - - - Ashland
Track '37, Basketball '37, (Lettered), '38,
Y. M. C. A. '38.

RUSSELL COON - - - - - Gulfport
Y. M. C. A. '37, '38, Staff '38, Language '38,
Cheerleader '37.



JOE COORDS - - - - - New York, N. Y.
Track '37, '38, Y. M. C. A. '37, '38, Newman
Club '37, '38, State Exam in Algebra, "P"
Club '37, '38.

MARION COWART - - - - - Saucier
Language Club '37.



MARY COWART - - - - - Saucier
Basketball '37, Language Club '37.

HERBERT DALE - - - - - Wiggins
Y. M. C. A. '38.



PAT D'AURIA - - - - - Nyack, N. Y.
Boxing '37 (Lettered), Y. M. C. A. '37, '38, "P"
Club '37, President '38, Newman Club '37, Sec't.
Treas. '38, Football '37, '38, Baseball '37, Capt.
'38, Language '38, Best College Freshman '37,
Best Sport '38.

LEO DAVIS - - - - - Ocean Springs
Y. M. C. A. '37, '38, Baseball '37, (Lettered), '38.

The SOPHOMORES



MARY DORSETT - - - - - Wiggins
Y. W. C. A. '37, '38, Home Ec. Club '37, '38.

MYRTLE DUBISSON - - - - - Long Beach
Y. W. C. A. '37, '38, Home Ec. Club '37, '38,
Band '37, '38, International Relations '38, Glee
Club '38, Wesley Foundation '38.

FRANK FOSTER - - - - - Nashville, Tenn.
Y. M. C. A. '37, '38, Staff '37, Track '37, Capt.
'38, Pres. Soph. Class '38, Wesley Foundation
'38, Football '37, Student Council '38, Most
Handsome Boy '37, '38.

IDA FRANKE - - - - - Pass Christian
Y. W. C. A. '37, '38, Band '37, '38, Glee Club
'37, '38, Contest in Music Ensemble '37, '38,
State Exam Ed. Psy. '38, B. S. U., Medal in
Piano Advancement '37.

OLGA FRISA - - - - - Woolmarket
Y. W. C. A. '37, Track '37, '38, Basketball (Let-
tered), '37, '38, Phi Theta Kappa '37, Dramatic
Club, "P" Club, Wesley Foundation, State Exam
in Shorthand '38, (First Place).

WILLIAM GOFF - - - - - Gulfport
Y. M. C. A. '37, '38, Dramatic Club '37, '38,
Tennis Captain '37, '38, Student Council '38, "P"
Club '37, '38, Language Club '38, International
Relations '38, Phi Theta Kappa '37, '38.

JOHNNIE GREEN - - - - - Pascagoula
Y. M. C. A. '37, '38, Tennis '37, '38, Track '37,
'38, Football '37, '38.

FRANCES GUNN - - - - - Biloxi
Y. W. C. A. '37, '38, Basketball '37 (Lettered),
'38, Tennis '37, Capt. '38, Newman Club '37,
'38, "P" Club '37, '38, Track '38.

The SOPHOMORES



JULIA HANSON - - - - - Pass Christian
Band '37, '38, Tennis '37, '38, Newman Club '37,
'38, International Relations '38, Track '38.

JOHN HOFFMAN - - - - - Pass Christian
Y. M. C. A. '37, '38, State Exam Chemistry 12,
'37, '50 '38, Newman Club Pres. '37, '38, Dra-
matic Club '38, Language Club '38, International
Relations Club Pres. '38, Phi Theta Kappa,
Vice-Pres. '38, Staff '38.

ARMAND JONTE - - - - - Pascagoula
Newman Club '37, '38, Y. M. C. A. '37, '38, Lan-
guage Club '37, '38, International Relations Club
'38, Glee Club '37.

LAWRENCE KENNETH - - - - - Gulfport
Y. M. C. A. '37, Vice-Pres. '38, Tennis Capt. '37,
Baseball '37, "P" Club, Glee Club '37.

RICHARD LEWIS - - - - - Gulfport
Boxing (Lettered), '37, '38, Y. M. C. A. '37, '38,
Track '37, Language '37, '38, "P" Club, Vice-
Pres. Soph. Class '38.

BARNEY LIVINGSTON - - - - - Moss Point
Y. M. C. A. '37, '38, Track '37, B. S. U. '38, Glee
Club '38.

INEZ MAY - - - - - Mendenhall
Band '38, Glee Club '38, Y. W. C. A. '38.

RICHARD MAY - - - - - Marks
Boxing (Lettered), '37, Y. M. C. A. '37, '38,
Track '37, Language Club '37, Best Dancer '37.

The SOPHOMORES



R. L. MCGILVAY - - - - - Houston, Texas
Football '37, '38, Baseball '37, '38, Track '37, '38,
"P" Club '37, '38, Y. M. C. A. '37, '38.

BRUCE McMAHAN - - - - - Hattiesburg
Football '37, '38, Boxing (Lettered), '37, '38,
Vice-Pres. Student Council, Secretary Soph.
Class, Y. M. C. A. '37, '38, Debate '37, Language
Club '38, B. S. U.



VIRGINIA NASH - - - - - Biloxi
Y. W. C. A. '37, Pres. '38, Staff '37, Editor '38,
State Exam. Health Ed. '37, Phi Theta Kappa
'37, Pres. '38, Vice-Pres. Freshman Class, Dra-
matic Club Pres. '38, Track '37.

D. L. NULL - - - - - Meridian
Y. M. C. A. '37, '38, B. S. U., Glee Club '38,
Quartet '38, Language Club '38.



BOYD O'NEAL - - - - - Perkinston
International Relations Club Vice-Pres. '38,
Wesley Foundation '38.

BEN OLIVER - - - - - Panama City, Fla.
Y. M. C. A. '37, '38, Football (Lettered), '37, '38,
Baseball '37, '38, Vice-Pres. Newman Club '37,
'38, Best All Around Boy '38, "P" Club '37, '38.



LYOUD OLIVER - - - - - Escatawpa
Y. M. C. A. '37, '38, B. S. U.

WARREN OLIVER - - - - - Pensacola, Fla.
Y. M. C. A. '37, Secretary '38, Football (Let-
tered), '37, Capt. '38, Newman Club '37, '38, "P"
Club '37, '38, Student Council '38, Track '38,
Most Popular Boy '38, Staff '38.



DOROTHY MAE OWEN - - - - - Wiggins
Y. W. C. A. '37, Phi Theta Kappa '37, Secretary
'38, International Relations Club '37, Secretary
'38, State Exam. Bookkeeping '37, '38, First
Place '37, B. S. U.

The SOPHOMORES



PETER PAVLOV - - - - - Biloxi
Newman Club '37, '38, Y. M. C. A. '38, Boxing
'37, International Relations Club '38, State
Exam. in American History '38.

MARION QUERY - - - - - Concord, N. C.
Football '38, "P" Club '38.



THOMAS RAMSAY - - - - - Perkinston
Football, (Lettered) '37, '38, Basketball (Let-
tered) '37, '38, "P" Club '37, '38, Y. M. C. A.
'37, '38, Best Boy Athlete '38.

BERNARD REEVES - - - - - Gulfport
Student Council '38, Band '37, '38, Y. M. C. A.
'37, '38, Dramatic Club '37, '38, International
Relations Club '37, '38, Staff '38, Language Club
'38, Phi Theta Kappa '38, State Exam. in Eng-
lish '37, '38, Tennis '38.



PERCY REEVES - - - - - Hattiesburg
Y. M. C. A. '37, '38, B. S. U. '33, President
Student Council '38.

LOIS RICHARDS - - - - - Gulfport
Y. W. C. A. '37, '38, Student Council '38, Glee
Club '37, '38, Quartet '37, '38, Beta Perk Co. '37.



BONNIE NEAL RILEY - - - - - Bassfield
Basketball (Lettered) '37, '38, Y. W. C. A. '37,
'38, Wesley Foundation '38, "P" Club '37, '38,
Student Council '38, Football Court.

Q. C. ROBERTS - - - - - Vancleave
Debate '37, '38, Dramatic Club '37, '38, Y. M.
C. A. '37, '38, Pres. Wesley Foundation, Glee
Club '37, '38, Pres. Language Club '38, Inter-
national Relations Club '38, Phi Theta Kappa
'38, Quartet '38.



EDITH RUSSUM - - - - - Perkinston
Band '37, '38, Language Club '37, '38, Y. W.
C. A. Secretary '37, '38, Staff '38, B. S. U.

The SOPHOMORES



EVELYN RUSSUM - - - - - Anding
Y. W. C. A. '37, Secretary-Treasurer '38, Glee
Club '37, Quartet '38, Home Ec. Club '37, Presi-
dent '38, B. S. U. Treasurer '38.



WARREN RUSSUM - - - - - Anding
Y. M. C. A. '37, '38, Glee Club '38, B. S. U. '38.



HAROLD SCARBOROUGH - - - - - Perkinston
Language Club '37.



MOE SHAPIRO - - - - - New York, N. Y.
"P" Club '37, '38, Track '37, '38, Y. M. C. A. '37,
'38, Football '37, State Exam. in History '38,
Boxing '37, International Relations Club '38.



ARLENE SMITH - - - - - Wiggins
Basketball '37, Language Club '37, Tennis
'37, '38.

MIRIAM STALLINGS - - - - - Gulfport
Glee Club '37, '38, Language Club '37,
Y. W. C. A. '37, '38.

KATHERINE WATTS - - - - - Purdis
Y. W. C. A. '37, '38, B. S. U. '38, Cutest Girl '37,
Football Court '38.

MILTON ZELMANOWITZ - - - - - New York, N. Y.
Staff '38, Track '37, '38, Y. M. C. A. '38, Basket-
ball '37, '38, International Relations Club '38,
Wittiest Boy '38, Boxing '37, "P" Club '37, '38.

MARGARET ZIMMERMAN - - - - - Waveland
Y. W. C. A. '38, Newman Club '38.



FRESHMEN

FRESHMEN



FAYE ALLEN - - - - - Perkinson

HELEN ALLEN - - - - - Belzey
Glee Club, Y. W. C. A.ALICE MARY AMIS - - - - Washington, D. C.
Glee Club, Y. W. C. A., Home Ec. Club,
Dramatic Club.

BESSIE ANTHONY - - - - - Wiggins

VIRGINIA BATSON - - - - - Wiggins
Y. W. C. A.BILL BLAKELY - - - - - Hattiesburg
Football (Lettered).EVELYN BLACK - - - - - Purvis
Y. W. C. A., Phi Theta Kappa, Basketball.

LOIS BLACKWELL - - - - - Lyman

CHRIS BOND - - - - - Orlando, Fla.
Y. W. C. A., B. S. U., Dramatic Club, Glee Club.ZETTIE BOND - - - - - Perkinson
Band, Glee Club.JOHN B. BROWN - - - - - Perkinson
Y. M. C. A.HAL BUCHANAN - - - - - Pelahatchie
Track, Basketball, Football, Y. M. C. A.GWENDOLYN CARPENTER - - - - - Gulfport
Y. W. C. A., Band, Wesley Foundation.MARGUERITE COLLE - - - - - Pascagoula
Y. W. C. A.

HELEN COOK - - - - - Wiggins

FRESHMEN

SALLY CORE - - - - - Folsom, La.
Y. W. C. A., Track, B. S. U., Basketball, Best
Sport, Best Girl Athlete, Home Ec. Club, "P"
Club, Most Popular Girl.DOT COVINGTON - - - - - Wiggins
Vice-President of Freshman Class, Y. W. C. A.
B. S. U.BESSIE LEE DAUKINS - - - - - Lucedale
"P" Club, Basketball, Track, Y. W. C. A.CRAWFORD DEES - - - - - Pascagoula
Y. M. C. A.RANDLE DEDEAUX - - - - - Perkinson
International Relations Club, Phi Theta Kappa.

RUBY D'OLIVE - - - - - Perkinson

MARGUARITE ENOCHS - - - - - McComb
Glee Club, Y. W. C. A., Cheer Leader.SOLON ETHRIDGE - - - - - Town Creek, Ala.
Football (Lettered), Baseball, "P" Club.JAMES FORTE - - - - - Pensacola, Fla.
Football (Lettered), Basketball, Track, Base-
ball, "P" Club.HAZEL GARRETT - - - - - Anding
Y. W. C. A.TOMMY GLASS - - - - - Bilori
Y. M. C. A., Football (Lettered), Basketball,
Track, Newman Club, "P" Club.PAUL GRAHAM - - - - - Bentonla
Y. M. C. A., Phi Theta Kappa, B. S. U.MILDRED GRAY - - - - - Pascagoula
Y. W. C. A., Wesley Foundation.HARRY GOZA - - - - - Hattiesburg
Y. M. C. A., Football.ROBERT GERONON - - - - - Gulfport
International Relations Club.

FRESHMEN



DORIS HAMILTON - - - - - Gulfport
Y. W. C. A., B. S. U.

RICHARD HARRISON - - - - - Biloxi

FRANK HODGES - - - - - Kosciusko
Football, Baseball, Y. M. C. A.

MODEZ HATTEN - - - - - Perkinston
Language Club, B. S. U.

SARA HOUSE - - - - - Saucier
Wesley Foundation.

THERESA HUBERT - - - - - Bush, La.
Basketball (Lettered), Y. W. C. A., Newman
Club, Home Ec. Club, "P" Club.

SALLY JANE' - - - - - Pascagoula
Miss Perkinston, Campus Queen, Phi Theta
Kappa, Glee Club, Drum Major, Y. W. C. A.,
Newman Club, May Queen, Football Court.

JETTA JARRELL - - - - - Terrell, Tex.
Tennis, Y. W. C. A., International Relations
Club, State Exam. History.

JUANITA JONES - - - - - Wiggins
Y. W. C. A., Home Ec. Club.

DIXIE KNIGHT - - - - - Mendenhall
Drum Major, Y. W. C. A., Glee Club, Phi Theta
Kappa, Best Dressed Girl, Dramatic Club.

ROBERT KURAU - - - - - Atlantic Highlands, N. J.
Football, Baseball, Y. M. C. A., Basketball,
Dramatic Club.

WALDO LANGENWALTER - - - - - Gulfport
Glee Club, Y. M. C. A.

BILLY LEE - - - - - Wiggins
Y. M. C. A.

CHARLES LITTLEPAGE - - - - - Gulfport
International Relations Club, Glee Club.

ESTA LEE LOTT - - - - - Wiggins
Y. W. C. A., B. S. U., Home Ec. Club.

FRESHMEN

PAUL HATTEN - - - - - Wiggins
Y. M. C. A.

HILARY HENGEN - - - - - Biloxi
Y. M. C. A., International Relations Club,
Phi Theta Kappa, Debate.

SALVATOR MIGLIACCIO - - - - - New York, N. Y.
Y. M. C. A., Newman Club, Language Club,
Track, State Exam. in Spanish 10.

R. L. McARTHUR - - - - - Gulfport
Football, Boxing, Track, Y. M. C. A., Inter-
national Relations Club.

ANGUS MCBRYDE - - - - - Sumrall
Y. M. C. A., Wesley Foundation, Language
Club, Phi Theta Kappa, Tennis, State Exam.
in French 10.

RUTH McCLURE - - - - - Ocean Springs
Phi Theta Kappa, B. S. U., Y. W. C. A.

ROBERT MCGAHEY - - - - - Columbus
Football (Lettered), Baseball, Y. M. C. A., "P"
Club, Wesley Foundation.

EVELYN MCQUAGGE - - - - - Ramsey Springs
Y. W. C. A., B. S. U., Phi Theta Kappa, Inter-
national Relations Club, Band.

HERSCHEL NASH - - - - - Biloxi
Y. M. C. A., Football (Lettered), "P" Club,
Phi Theta Kappa, State Exam. in Algebra 37,
Chemistry 10, '38, Language Club, Track, Staff.

MARSHALL NESMITH - - - - - Hazlehurst
Baseball

ELISE NETHERLAND - - - - - Biloxi
Y. W. C. A., Cheer Leader, Basketball, Track,
(Lettered), "P" Club, B. S. U. Staff.

HARVEY O'NEAL - - - - - Wiggins
Y. M. C. A.

HELEN O'NEAL - - - - - Saucier
Y. W. C. A.

KATYE O'NEAL - - - - - Saucier
Home Ec. Club, Basketball, Vice-Pres. Y. W.
C. A., Student Council, Wesley Foundation.

LAURA PARKER - - - - - Wiggins



FRESHMEN



CYRIL PEARSON - - - - - Milan, Tenn.
Football, Track.

EUGENE PERESICH - - - - - Biloxi
Newman Club.

LILLIE PROCTOR - - - - - Gulfport
Y. W. C. A., Home Ec. Club, Wesley Foundation,
Dramatic Club, Football Court.

SHIRLEY REDDING - - - - - Biloxi
Y. W. C. A., Phi Theta Kappa, Glee Club,
Quartet, Dramatic Club, Staff.

KIRKLAND REEVES - - - - - Perkinson
Y. M. C. A., Dramatic Club.

CLYDE REYNOLDS - - - - - Alabama
Y. M. C. A.

LOUISE ROBERTS - - - - - Vancleave
Y. W. C. A., Basketball, Tennis, Vice-Pres.
Wesley Foundation, "P" Club.

HILDA ROUSE - - - - - Saucier

VICTOR ROYAL - - - - - Buford, Ga.

CHRISTINE SAUCIER - - - - - Saucier
Y. W. C. A.

VIRGINIA SCARBOROUGH - - - - - Biloxi
Wesley Foundation, International Relations
Club.

RIVERS SINGLETON - - - - - Gulfport
Y. M. C. A., Glee Club, Wesley Foundation.

FRONA SPRINKLE - - - - - Pass Christian
Basketball (Lettered), Y. W. C. A., Track, Inter-
national Relations Club, Wesley Foundation,
"P" Club.

REGINALD SWITZER - - - - - Gulfport
Football, (Lettered), Baseball, Y. M. C. A., "P"
Club, President Freshman Class.

HORACE SMITH - - - - - Perkinson

FRESHMEN

HOWARD SIMMONS - - - - - Columbia
Y. M. C. A.

EARLE TAYLOR - - - - - Ocean Springs
Y. M. C. A., Language Club.

ENGLE TAYLOR - - - - - Purvis
Y. M. C. A., Dramatic Club.

DORTHEA THOMAS - - - - - Smackover, Ark.
Y. W. C. A., B. S. U., Glee Club.

GEORGE THOMPSON - - - - - Escatawpa
Y. M. C. A., Glee Club, Wesley Foundation.

DAVID VALVERDE - - - - - Pascagoula
Y. M. C. A., Phi Theta Kappa, Newman Club,
International Relations Club.

WILLIAM WEATHERBEE - - - - - Gulfport
Y. M. C. A., Wesley Foundation.

STEPHEN WHETSTONE - - - - - Biloxi
Y. M. C. A., B. S. U., Phi Theta Kappa.

DAVID WALL - - - - - Long Beach
Y. M. C. A., Glee Club.

JEWELL WILLIAMS - - - - - Moss Point
Y. W. C. A., Band, Dramatic Club, Wesley
Foundation, Debate, Secretary - Treasurer
Freshman Class, State Exam. Education.

JOHN WILLIAMS - - - - - Buford, Ga.
Football (Lettered), Basketball, Baseball,
"P" Club.

FRASER WILKERSON - - - - - Ocean Springs
Glee Club, Y. M. C. A., Wesley Foundation

EDITH WATTS - - - - - Purvis
Y. W. C. A., B. S. U., Phi Theta Kappa.

BILL WEAVER - - - - - Gulfport
Y. M. C. A., Boxing.



HIGH SCHOOL SENIORS



WILLIAM CARLIN - - - - - Bond

J. T. COFFMAN - - - - - Elkmont, Ala.
Football (Lettered), "P" Club, Y. M. C. A.ELVA DOWNING - - - - - Perkinson
Dramatic Club, Language Club.MADIE GIBSON - - - - - Bond
Language Club.

MARTEAL GREEN - - - - - McHenry

LUCIEN KIDD - - - - - Puerto Castilla, Honduras
Y. M. C. A., Band, Orchestra, Dramatic Club,
Newman Club.ROBERT LA TERZA - - - - - New York, N. Y.
Y. M. C. A., Newman Club, Track.CHARLES MCNAMEE - - - - - Jackson
Y. M. C. A., Band, Orchestra, Glee Club, Dramatic Club, Wesley Foundation.ROBERT MCNAMEE - - - - - Jackson
Y. M. C. A., Band, Glee Club, Dramatic Club,
Wesley Foundation.

CECIL O'NEAL - - - - - Perkinson

HIGH SCHOOL SENIORS

INEZ RAMSAY - - - - - Ramsay Springs
Y. W. C. A., Home Ec. Club, Dramatic Club,
Staff, Football Queen.GLORIA RAND - - - - - New Orleans, La.
Y. W. C. A., Language Club.MILDRED RUSSUM - - - - - Perkinson
Glee Club, Band, Y. W. C. A., Home Ec. Club,
Language Club.JOE THOMPSON - - - - - Gulfport
Football, Y. M. C. A.HARRY TRUE - - - - - Gulfport
Y. M. C. A.CLAYTON WELLS - - - - - Biloxi
Dramatic Club, Y. M. C. A., Student Council.ARTHUR WOOD - - - - - Progreso, Honduras
Dramatic Club, Y. M. C. A.FRASER WOOD - - - - - Progreso, Honduras
Y. M. C. A., Dramatic Club.DALLAS SMITH - - - - - Hattiesburg
Boxing, Football, Track, "P" Club.CURTIS PARKER - - - - - McHenry
Orchestra, Band, Glee Club.

HIGH SCHOOL JUNIORS



Left to right:

FIRST ROW: Irma Lee Bond, Jack Cook, Georgia Lee Sapp, Charles De Metz, Alice Cooper, Robert Corrales, Lorraine Danzy, George Butler, Margaret Breland.

SECOND ROW: Myran Cruthirds, Benny Ray Breland, Winnifred Batson, Margaret Broadwater, Thurlow Walker, Coach O'Neal, Sponsor, Dorothy Ruth Jordan.

THIRD ROW: Helen Lott, Howard Pollock, Jean Parker, Delma D'Olive.

FOURTH ROW: Tilla Beverly, Salvador Macis, Thomas Howell, Cecil Patterson, Marjorie Batson.

HIGH SCHOOL SOPHOMORES



Left to right:

FIRST ROW: Cliett Kemp, Alma Parker, Winnie Stenson, Myrna Ree Johnson, Helen Jordan, Flora Broadus, Irlean Ladner, Helen Bond, Betty Wight, Margaret Redman, Addison Wright.

SECOND ROW: Glenn Kemp, Hamilton Martreal, John Robinson, Norval Denson, Millard Bond, Henry Hickman, Jack Williams.

THIRD ROW: Terrell Loper, Townsend Gifford.

HIGH SCHOOL FRESHMEN



Left to right:

FIRST Row: Leroy Weeks, Imogene Willis, George Denson, Bertha Williams, Frank Russum, Marjorie Shepard, John Roberson, Vivian Ray Chavers, W. L. Atchinson, Virginia Howell.

SECOND Row: Norman Weeks, Bill Gaffney, Jean Price, Boyce Breland, Opal Clayton, Andre Palencia, Virginia Maples, Wilma Proffit, Lois Breland, Mary Kate Hickman, Miss Thombs, Sponsor.

THIRD Row: Millard Blackwell, Adolf Brown, Vivian Black, Claude Chandler, Doris Chandler, Maxi Perrira, Dorothy Dantzler, Shelton Broadus, Nettie Sapp, Mr. Darby.



FEATURES



FOOTBALL QUEEN

..... Inez Ramsay



... and her COURT

Bonnie Neal Riley

Katherine Watts



Lillie Proctor

Sally Jane



... Sally Jane

CAMPUS QUEEN



... Bonnie Neal Riley

BEAUTY





... Sally Jane

CAMPUS QUEEN



... Bonnie Neal Riley

BEAUTY





... Dixie Knight

BEAUTY



... Doris Hamilton

BEAUTY



THOMAS
RAMSAY
"Best Boy
Athlete"



WILMA
PROFIT
"Cutest
Girl"



SALLY JANÉ
"Miss Perkins"



BEN OLIVER
"Best All
Round
Boy"



EVELYN
RUSSUM
"Miss
Home Ec."



SALLY CORE
"Best Girl Sport"
"Best Girl Athlete"
"Most Popular Girl"



FRANK
FOSTER
"Most
Handsome
Boy"



MR. HINTON
"Most Influential Teacher"



MILTON ZELMANOWITZ
"Wittiest Boy"



MISS HANEY
Teacher, Most
Interested in Students



JEAN PARKER
"Best Girl Dancer"



CRAWFORD DEES
"Best College Freshman"



PAT D'AURIA
"Best Boy Sport"



VIRGINIA
NASH
"Best
All Round
Girl"



COACH S.M. WALKER
"Most Popular Teacher"



DIXIE
KNIGHT
"Best
Dressed
Girl"



WARREN OLIVER
"Most Popular Boy"



Q.C. ROBERTS
"Most Likely to Succeed"



JOE BREWER
"Best Dressed Boy"



STEPHEN WHETSTONE
"Best Boy Dancer"



1. Steppin' High. Home Coming.
2. There's nothing like a nice cold dip.
3. Here. Fishy, Fishy.
4. "Alone."
5. Say "Heil, D'Auria" or else.
6. My oh my -- Hercules?
7. Don't get excited, its only Coach O'Neal.
8. The car is testimony that Mike was up here.
9. Wait for me Peter, I've got two tardys now.
10. Come on fellows, time to get at it.
11. Harold Perlman, Sports Editor.
12. There's a Coal Mine in the Sky Far Away.
13. Room 27, Dorm. III. Rogue's gallery
14. And so on into the night.
15. Nice trees, don't you think? Spring Football.
16. Hitch-hikers, de luxe.
17. You say it.
18. So Perk's a senior college now, huh?
19. They look good to us Coach.
20. Smile, Teacher.





1. The Mad Rooshan.
2. Betta watch that bridge, Miss Haney!
3. What's that between you and the bull, Pat?
4. The barn from the new tank.
5. A puritan Shirley?
6. Four inches, Tokus.
7. Sophomores in action.
8. The drum-majors. How I look?
9. That's our photographer!!
10. "College Swing."
11. Looks bad, looks bad.
12. Hey! Keep your hand in your own pocket.
13. Coach and company.
14. The thinkers.
15. Ring that bell.
16. Them were the good old days.
17. If Mama could only see me now.
18. Some form, Coach.
19. I'd rather lead a band.
20. See 12, page 44.
21. Work hard and maybe you'll pass, girls.
22. See page 69.
23. High School hangout.
24. Were you ever still, Sally?
25. Watch them go!!
26. Main Street, Perkinson.
27. What's going on here?





A thing of beauty is a joy forever:
 Its loveliness increases; it will never
 Pass into nothingness; but still will keep
 A bower quiet for us, and a sleep
 Full of sweet dreams, and health, and quiet
 breathing.

Therefore, on every morrow, are we wrathing
 A flowery band to bind us to the earth,
 Spite of despondence, of the inhuman dearth
 Of noble natures, of the gloomy days,
 Of all the unhealthy and o'er-darkened ways
 Made for our searching: yes, in spite of all,
 Some shape of beauty moves away the pall
 From our dark spirits.



ACTIVITIES

STUDENT COUNCIL

PERCY REEVES, *President*

BRYCE McMAHAN, *Vice-President*

WARREN OLIVER, *Sec't-Treas.*

BONNIE NEAL RILEY

FRANK FOSTER

KATYE O'NEAL

BERNARD REEVES

WILLIAM GOFF

LOIS RICHARDS

CLAYTON WELLS

The Student Council holds a distinct place on the campus for it is composed of the heads of the leading student organizations--Y. W. C. A., Y. M. C. A., Phi Theta Kappa, High School, and Class Presidents. The Council endeavors to discover and remedy the student problems, assist the discipline committee in the judgment of offenders of the school regulations.

An organization which carries out its duties to the student body, efficiently and without any outward display. It is working toward the ideal of a happier student body, distinctive in the cooperation between the student and student and between the students and faculty.

THE STAFF

VIRGINIA NASH
Editor

MILTON ZELMANOWITZ
Assistant Editor

WARREN OLIVER
Business Manager

RUSSELL COON
Assistant Business Manager

MARIE BRANDT
Art Director

HERSCHEL NASH
Freshman Reporter

BERNARD REEVES
Sports Reporter

ELISE NETHERLANDS
Freshman Reporter

HAROLD PERLMAN
Sports Reporter

JOHN HOFFMAN
Sophomore Reporter

SHIRLEY REDDING
Organization Reporter

EDITH RUSSUM
Sophomore Reporter

L. P. INGRAM
Faculty Advisor

INEZ RAMSAY
High School Reporter

In later years, when we turn the pages of this Year Book, may we recall with fondness the events of bygone days at Perkinston.

May we find re-kindled in our hearts a new love and devotion for our Alma Mater, and may our hearts ever beat loyally for her.



STANDING: Angus McBryde, Hal Perlman, Stephen Whetstone, Hilary Hengen, Randle Dedeaux, Elbert Webb, Herschel Nash, Paul Graham, David Valverde.

SITTING, FIRST ROW: John Hoffman, Dorothy Mae Owen, Mr. Walker, sponsor, Virginia Nash, William Goff, Olga Frisa, Q. C. Roberts.

SECOND ROW: Evelyn McQuagge, Dixie Knight, Sally Jane', Evelyn Black, Shirley Redding, Edith Watts, Ruth McClure.

PHI THETA KAPPA

The Gamma Nu Chapter of the national honorary society, Phi Theta Kappa, has for its purpose the fostering of a devotion to study and to scholarly ideas, the principles of which are embodied in the Greek letters which mean, wisdom, aspiration, and purity.

In order to make the Phi Theta Kappa, a student must attain the highest ten percent of scholastic rating of the school and in order to stay in the society he must retain a grade of over B.



The DEBATERS

MISS HANEY, Faculty Advisor; JEWELL WILLIAMS, Q. C. ROBERTS, HILARY HENGEN, BRYCE McMAHAN, MR. RUSSUM, Faculty Advisor.

The debaters represented Perkinson ably in their debate on an important subject of current interest. We take our hats off to these workers and the ones who directed them in their excellent work.



The DRAMATIC CLUB

FIRST ROW: Clayton Wells, Alice Mary Amis, John Hoffman, Jewell Williams, Q. C. Roberts, Dixie Knight, Lucien Kidd, Lillie Proctor.

SECOND ROW: Miss Brown, Sponsor; Arthur Wood, Elva Downing, Virginia Nash, Inez Ramsay, Salvadore Macis.

THIRD ROW: William Goff, Christine Bond, Harry True.

The Dramatic Club, under the direction of Miss Brown, had the distinction of tying for third place in the state contest with the play "A Message From - - -" in which William Goff, Salvadore Macis, Clayton Wells, Bob Kureau and Bernard Reeves played.

The club sponsored several plays, a Christmas pageant and a performance of "Macbeth" by a professional company.

The INTERNATIONAL RELATIONS CLUB



MEMBERS

Mr. D. D. O'Neal, *Sponsor*

JOHN HOFFMAN, *President*

BOYD O'NEAL, *Vice-President*

DOROTHY MAE OWEN, *Secretary*

WILLIAM GOFF

Q. C. ROBERTS

BERNARD REEVES

INEZ MAY

HILARY HENGEN

JULIA HANSON

R. L. McARTHUR

MYRTLE DUBISSON

EVELYN McQUAGGE

ROBERT GERNON

MILTON ZELMANOWITZ

CHARLES LITTLEPAGE

DAVID VALVERDE

RANDLE DEDEAUX

FRONA SPRINKLE

PETER PAVLOV

ARMAND JONTE'

MARY BABUCHNA

JETTA JARRELL

VIRGINIA SCARBOROUGH

The HOME ECONOMICS CLUB

MEMBERS

MISS MARY ELEANOR JOHNSTON

EVELYN RUSSUM, *President*

MARY DORSETT, *Vice-President*

MARIE BRANDT, *Secretary-Treasurer*

MARY BABUCHNA

SALLY CORE

LILLIE PROCTOR

INEZ RAMSAY

MILDRED BRELAND

MYRTLE DUBISSON

ESTA LEE LOTT

INEZ MAY

BETTY WIGHT

VIRGINIA MAPLES

MARJORY SHEPARD

KATYE O'NEAL

THERESA HUBERT

MILDRED GRAY

MILDRED RUSSUM

ALICE MARY AMIS

WILMA PROFITT



BAND



STANDING: Director Beers, John Roberson, Rivers Singleton, Inez May, Evelyn McQuagge, Lucien Kidd, Sally Jane, Frank Doubleday, Dixie Knight.

OUTER CIRCLE: Leroy Weeks, Richard Harrison, Charles McNamee, Ida Franke, Bernard Reeves, Addison Wright, Glenn Kemp, Millard Bond.

MIDDLE CIRCLE: Frank Russum, Myrtle Dubisson, Margaret Broadwater, Julia Hanson, Marie Brandt, Marjory Shepard, Jewell Williams, Robert Watts, George Butler, Bob McNamee.

CENTER CIRCLE: Mildred Russum, Gwendolyn Carpenter, Zettie Bond, Townsend Gifford, Joe Brewer, Emma Lou Stokoe, Edith Russum.

The Junior College Band had over thirty-five members when organized at the opening of school. The many former members were joined by the new ones to form a well balanced band.

The first few months the band practiced "pep music" for the support of the football team. They played at all of the home games and accompanied the team to Poplarville. The band entered the contest at Moorhead under the able leadership of its director, Mr. Beers.

ORCHESTRA



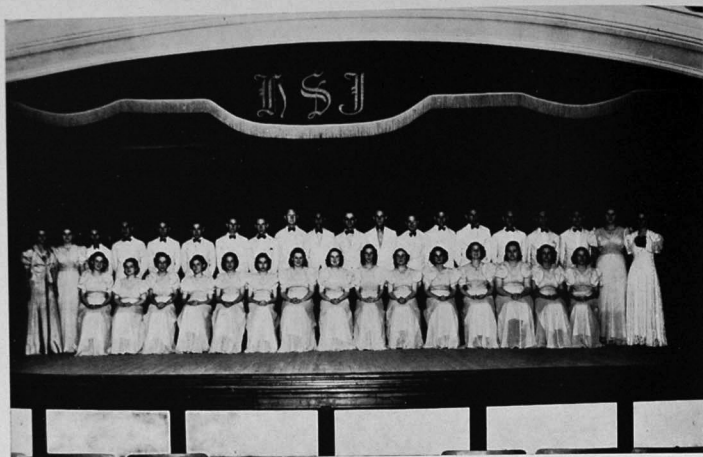
Frank Doubleday, Alto Saxophone; Kenneth Vance, Tenor Saxophone; Charles McNamee, Alto Saxophone; Joe Brewer, Alto Saxophone; S. C. Beers, Trombone; George Butler, Trumpet; Robert Watts, Trumpet; Rivers Singleton, Bass; Curtis Parker, Piano; Alice Cooper, Howard Pollock, Vocalists; Emma Lou Stokoe, Xylophone.

Scene from "Cleopatra" Burlesque Opera



Main Characters: Kenneth Vance, S. C. Beers, Curtis Parker, Q. C. Roberts, Charles McNamee, Male Chorus.

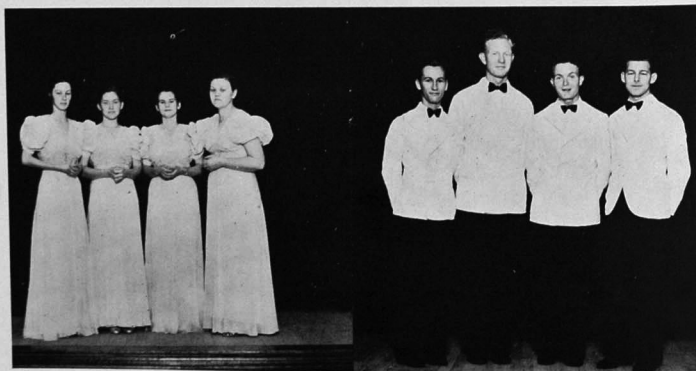
GLEE CLUB



STANDING: Ida Franke, Helen Allen, David Null, Bob Watts, B. Livingston, John Vance, Frazier Wilkerson, D. C. Vance, Joe Brewer, Bob McNamee, W. Langenwalter, David Wall, Q. C. Roberts, Joe Thompson, Warren Russum, R. Singleton, Charles Littlepage, Charles McNamee, Inez May, Miss Godbold.

SITTING: Christine Bond, A. M. Amis, Marguerite Enochs, Mildred Russum, Dixie Knight, Edith Russum, Mildred Breland, Myrtle Dubisson, Shirley Redding, E. L. Stokoe, Lois Richards, Miriam Stallings, Evelyn Russum, Zettie Bond, Nettie Sapp.

The Glee Club is composed of voice students and the best voices of the student body. The club represents the school in varied programs consisting of operettas, choruses, and song cycles.



GIRLS' QUARTET
Shirley Redding, Mildred Russum, Lois Richards, Evelyn Russum.

BOYS' QUARTET
David Null, Joe Brewer, Q. C. Roberts, Charles McNamee.

LANGUAGE CLUB



FIRST ROW: Tom Howell, Marie Brandt, John Hoffman, Gloria Rand, Pat D'Auria, Betty Wight, Russell Coon, Madie Gibson, Bernard Reeves, Q. C. Roberts, Miss Frazier, Instructor.

SECOND ROW: Arthur Wood, Mildred Russum, Elva Downing, James Palencia, Moxez Hatten, Martin Menger, Shirley Redding, Salvatore Migliaccio, Edith Russum, Bryce McMahan, David Null.

THIRD ROW: Virginia Nash, Herschel Nash, Bud Lewis, Bill Goff, Angus McBryde, Harold Perlman, Armand Jonte, Joe Brewer, Engle Taylor.

Q. C. ROBERTS, President; PAT D'AURIA, Vice-President; ARTHUR WOOD, Secretary-Treasurer

GIRLS' "P" CLUB



Bonnie Neal Riley, Basketball; Frances Gunn, Basketball; Olga Frisa, Basketball; Orlene Smith, Tennis.

NEWMAN CLUB



FIRST ROW: David Valverde, Sally Jane', Andrew Ladiner, Julia Hanson, Lucien Kidd, Theresa Hubert, John Hoffman, Margaret Zimmerman, D. Rando.

SECOND ROW: Warren Oliver, Bob La. Terza, C. De Metz, B. Oliver, Thomas Glass, S. Migliaccio, H. Pollock.

THIRD ROW: Eugene Peresich, Joe Coords, Armand Jonte', Peter Pavlov.

The Newman's Club object is to foster the spiritual, intellectual and social interests of the Catholic students of this school and to weld them together into a common union; to aid in the work of the Catholic Church and to assist the college and the students when ever possible.

Holy Mass is held on the campus every Sunday morning for the benefit of the students by the Reverend Francis McCollam of Biloxi.

OFFICERS

JOHN HOFFMAN, President; BEN OLIVER, Vice-President; PAT D'AURIA,
Secretary and Treasurer

Y. W. C. A.



VIRGINIA NASH, President; KATYE O'NEAL, Vice-President; EVELYN RUSSUM, Secretary and Treasurer.

FIRST ROW: A. M. Amis, E. McQuagge, G. Rand, A. Cooper, V. Nash, E. L. Stoklie, Dot Thomas, D. Knight, J. Williams, G. Carpenter.

SECOND ROW: Dot Covington, M. Colle, C. Bond, M. Shepherd, I. Ramsay, W. Proffitt, M. Enochs, J. Jones, L. Proctor, J. Parker, M. Babuchna.

THIRD ROW: B. L. Dawkins, L. Roberts, K. Watts, E. Netherlands, S. Jane', M. Gray, E. Watts, M. Stallings, M. Breland, Va. Maples, R. McClure.

FOURTH AND FIFTH ROWS: Christine Saucier, T. Hubert, F. Sprinkle, H. Bridge, S. Core, L. Richards, D. Hamilton, Miss Haney, Sponsor; Va. Batson, O. Smith, E. Russum, M. Dubisson, E. Russum, I. May.

The purpose of the Y. W. C. A. is to enrich the life of each of its members. The year was especially successful which was due in a great part to the excellent service of the program committee which was composed of Jewell Williams, Ida Franke, Mildred Breland, Mildred Gray, and Inez Ramsay, and the diligent work of the sponsor, Miss Haney.

The object has been to develop the spiritual side of life primarily but they have sponsored several outstanding events, two of which were the Mock Wedding, which was perhaps the most beautiful occasion of the year, and the Spring Retreat.

They sent delegates to the state convention at Jackson and the Southern Conference at Blue Ridge, North Carolina.

Y. M. C. A.



The Young Men's Christian Association has as its aim and purpose to promote the growth of Christian character on the campus and secure a better fellowship between the students. The Y. M. C. A.'s membership encloses about three-fourths of the boys on the campus.

The climax of an active year was a weeks visit by Dad Elliot, a national lecturer of the Y. M. C. A., who inspired the students to a new height.

A newly built hut is now enjoyed by the members and it is believed that it will prove of great value in the years to come.

OFFICERS

JOE BREWER, President; LAWRENCE KENNETH, Vice-President; WARREN OLIVER, Secretary and Treasurer.

MEMBERS

FIRST ROW: Moe Shapiro, Tony Colmer, Pat D'Auria, Rivers Singleton, Lawrence Kenneth, Bernard Reeves, Warren Oliver, Sammie Joe Brewer, John Hoffman, Barney Livingston, Herschel Nash, Frank Russum.

SECOND ROW: Frazier Wilkerson, Billy Lee, Waldo Langenwalter, Frank Hodges, Boots Graham, David Null, Ben Oliver, Russell Coon, Bryce McMahan, Harvey O'Neal, Salvador Macis.

THIRD ROW: Lloyd Oliver, Crawford Dees, John Cooper, Harold Perlman, Earle Taylor, Professor Gregory, Sponsor.

FOURTH ROW: Frazier Wood, Hamilton Montreaul, Tom Howell, Steven Whetstone, Bob McNamee, John Green, Bill Goff, Hal Buchanan, Warren Russum, Milton Zelmannowitz, Bill Blakely, Charles McNamee, Howard Pollack.

FIFTH ROW: Q. C. Roberts, Percy Reeves, Omar Murphy, George Thompson, John Williams, Arthur Wood, Salvator Migliaccio, Bob La Terza, James Palencia, Leo Davis, Frank Foster, Bowen Bright, Harbert Dale.

SIXTH ROW: Knowlton, John Brown, Richard May, Bud Lewis, Horace Lowery, Bill Gafney, David Wall, Tom Ramsey, Tommy Glass, James Coffman, Angus McBryde, Reginald Switzer, Engle Taylor.

SEVENTH ROW: James Bolton, William Weatherbee, Harry Goza.

WESLEY FOUNDATION



FIRST ROW: Jewell Williams, Angus McBryde, G. Carpenter, Clyde Kemp, Mildred Gray, Earle Taylor, Helen O'Neal, F. Wilkerson, Va. Scarborough, Inez May, Rivers Singleton, Dixie Knight, Miriam Stallings, Miss Johnston.

SECOND ROW: Alice Mary Amis, Q. C. Roberts, Myrtle Dubisson, Joe Thompson, Louise Roberts, Victor Royal, Sara House, John Williams, Olga Frisa, Bill Gaffney, Frank Foster, Bonnie Neal Riley, David Wall.

The Wesley Foundation is a Methodist organization on the campus filling the plan of the young people's division in the church. Its purpose is to promote and maintain Christian fellowship and good will among the students.

The local chapter was organized early in the year by Reverend Ridgeway, pastor of the Methodist Church at Wiggins. Meetings are held each Sunday evening at 8:30 and once each month, the entire group attends the services at the Methodist Church in Wiggins.

This organization has made an excellent start in the religious activities of the campus and promises greater work in the years to come.

OFFICERS

Q. C. ROBERTS, President; LOUISE ROBERTS, Vice-President; MIRIAM STALLINGS, Secretary and Treasurer; MR. C. O. HINTON, MISS MARY ELEANOR JOHNSTON, Faculty Councils.

B. S. U.



PAUL GRAHAM, *President*; DOROTHY COVINGTON, *First Vice-President*; B. LIVINGSTON, *Second Vice-President*; EVELYN RUSSUM, *Treasurer*; MISS LORRAINE GODBOLD, *Faculty Advisor*; REVEREND R. H. CAMPBELL, *Pastor*.

The Baptist Student Union is the voluntary religious activity of the Baptist students within the schools and colleges of the Southland. It is a connecting link between the college and the local church. All Baptist students are potential members of the General B. S. U. but voluntary participation in the same unit organization is essential to recognized membership. There is a council of this organization which consists of those students elected to positions of leadership and special responsibility. The council formulates the plans, sets the goals, determines the ideals for the General B. S. U. and for the work of the Baptist students. It is considered an honor to be selected for an office and it is the officer's privilege to be faithful in all his work.

COMMERCIAL CLUB



Left to Right:
FIRST ROW: Olga Frisa, Hazel Bridge, Dorothy Mae Owen, Julia Hanson, Katherine Watts, Marguerite Colle, Evelyn McQuagge, Miss Hart, Curtis Parker.
SECOND ROW: Lillie Proctor, Lois Richards, Jean Parker, Christine Bond, Dorothea Thomas, Jewell Williams, Helen O'Neal, Lois Blackwell, Dixie Knight, Jetta Jarrell.
THIRD ROW: Mary Dorsett, Hilda Rouse, Helen Cook, Martel Green, Moxez Hatten, Virginia Scarborough, Sally Jane, Bonnie Neal Riley, Sara House, Myron Cruikshanks.
FOURTH ROW: Virginia Nash, Billy Lee, Armand Jonte, Crawford Dees, William Hunt, Stephen Whetstone, Bowen Bright, Richard May, David Valverde, Charles McNamee, Dorothy Covington.
FIFTH ROW: Rivers Singleton, Peter Pavlov, James Sapp, David Wall, Robert La Terza, Bob McNamee, Paul Hatten, Richard Harrison, Christine Saucier.

COMMERCIAL GRADUATES



OLGA FRISA JULIA HANSON DOROTHY MAE OWEN HAZEL BRIDGE

"P" CLUB



First Row: S. M. Walker, Coach; James Forte', Lawrence Kenneth, Pat D'Auria, Moe Shapiro, Ben Oliver, Solon Ethridge, A. I. Rexinger, Coach.

Second Row: L. B. Weeks, Coach, Robert McGahey, Bryce McMahan, Milton Zelmanowitz, Joe Coords, Bill Blakely, Herschel Nash, R. L. McGilvray.

Third Row: Tommy Glass, Warren Oliver, William Goff, Johnnie Green, Bud Lewis, Richard May, Reginald Switzer, J. C. White.

Fourth Row: Thomas Ramsay, Bowen Bright, John Williams, James Sapp, John Norwood, Leo Davis, Frank Foster, James Coffman, James Bolton.

FOOTBALL

James Forte', Ben Oliver, Solon Ethridge, Robert McGahey, Bryce McMahan, Bill Blakely, Herschel Nash, Mgr., R. L. McGilvray, Tommy Glass, Warren Oliver, Reginald Switzer, J. C. White, Thomas Ramsay, John Norwood, James Coffman, James Bolton, John Williams; Coaches, A. I. Rexinger, S. M. Walker.

BASKETBALL

Bowen Bright, James Sapp, A. I. Rexinger, Coach.

TRACK

Moe Shapiro, Milton Zelmanowitz, Joe Coords, Frank Foster, D. D. O'Neal, Coach.

TENNIS

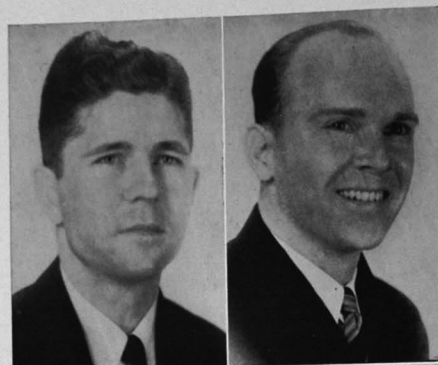
Lawrence Kenneth, William Goff, John Green, R. L. Weeks, Coach.

BOXING

Bud Lewis, Richard May.



ATHLETICS



COACH - - - - S. M. Walker

COACH - - - - D. D. O'Neal

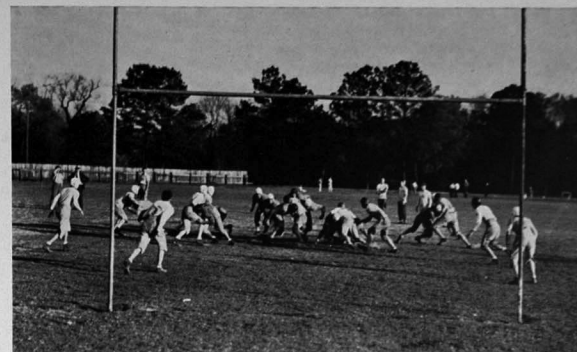


COACH - - - - A. I. Rexinger

COACH - - - - L. R. Weeks

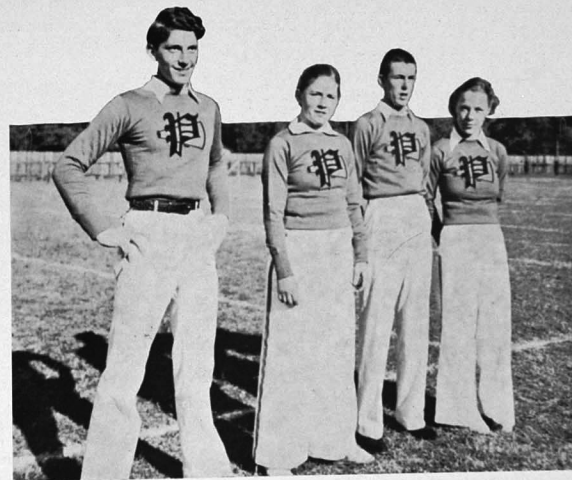
COACHES

We not only have coaches who have shown themselves to be of highest ability, but their popularity with the students is one of their outstanding characteristics. Strong-willed arbiters of athletic justice, great-minded sponsors of great sports, the coaches held sway over our kingdom of athletics. Gentlemen in word and deed, these men have set high standards for their students. They require cleanliness in their sport and possess the force to put their wishes into deeds.



THE BULLDOGS AT SCRIMMAGE

FOOTBALL



CHEER LEADERS



FIRST ROW: F. Hodges, R. L. McGilvray, B. Blakley, W. Oliver, James Forte', B. Oliver, J. Bolton, S. Ethridge, C. Reynolds, B. McGahey.

SECOND ROW: B. Kureau, T. Walker, F. Haynes, D. Smith, R. L. McArthur, B. Bright, B. Weaver, V. Royal, P. D'Auria, H. Buchanan, B. Dixon.

THIRD ROW: Coach Walker, H. Nash, Mgr., B. McMahan, T. Ramsay, R. Switzer, J. Williams, C. T. Manley, C. Pearson, J. Williams, M. Query, T. Glass, J. Coffman, J. White, J. Thompson, Mgr., J. Simmons, Mgr., Coach Rexinger.



WARREN OLIVER - - - - - Captain

REGINALD SWITZER - - - - - Captain-Elect

OLON ETHRIDGE - - - - - Fullback

C. T. COFFMAN - - - - - Fullback

R. L. MCGILVRAY - - - - - Halfback

JOHN WILLIAMS - - - - - End



FOOTBALL TEAM

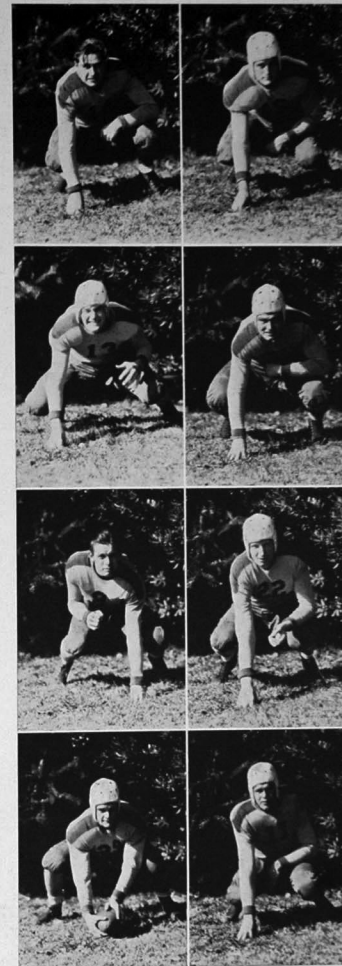
Although the Bulldogs did not re-win the state championship this year, they successfully defended their right to the title of one of the smartest and toughest junior college teams. Coaches Rexinger and Walker are to be congratulated on their fine work of the season, and the magnificent spirit instilled into the Perk gridsters. Captain Warren Oliver and his teammates deserve all the praise the student fans can offer for their sterling work on the field.

The team was admirably supported by the student body, and their schoolmates threw all their energies into the encouragement of the team.

A large number of the Bulldogs will be lost by graduation this year, and there will be a further decimation from withdrawals, but the players will remember this year as a fine, hard-fought season.

SCORE

Perk - - 7	Ellisville - - - - 7
Perk - - 7	Summit - - - - 0
Perk - - 14	Springhill Frosh - 0
Perk - - 13	Scooba - - - - 7
Perk - - 6	Millsaps Frosh - - 0
Perk - - 0	Goodman - - - - 34
Perk - - 0	Miss. Coll. Frosh - 26
Perk - - 0	Poplarville - - - 6



GIRLS' BASKETBALL

Perkinston's basketball girls earned the distinction this year of being classed third in the state, according to pre-tournament rating. The team showed remarkable teamwork and skillful playing. The forwards, Theresa Hubert, Frona Sprinkle, Louise Roberts, Evelyn Black, and Katye O'Neal displayed astonishing ability in shooting goals, often turning one-sided games into a duel between themselves for scoring points.

Guards, Sally Core, Bonnie Neal Riley, Olga Frisa, Bessie Lee Dawkins, Christine Saucier, Elise Netherland and Hazel Bridge ably held up their part of the defense.

The games held in Perkinston's gymnasium found the Perk girls experienced in teamwork with both defensive and offensive plays capably executed. Perkinston easily won all the conference games except to Decatur, there, with whom they tied one and lost one, and with Scooba to whom they lost, and finally to Wesson at the conference.

PLAYERS

BONNIE NEAL RILEY, *Captain*

SALLY CORE, *Guard*

OLGA FRISA, *Guard*

ELISE NETHERLAND, *Guard*

CHRISTINE SAUCIER, *Guard*

THERESA HUBERT, *Forward*

FRONA SPRINKLE, *Forward*

LOUISE ROBERTS, *Forward*

EVELYN BLACK, *Forward*

HAZEL BRIDGE, *Guard*



BOYS' BASKETBALL

PLAYERS

J. C. WHITE, *Captain*

HILARY HORNE

C. T. MANLY

JOHN WILLIAMS

JAMES FORTE'

THOMAS RAMSAY

TOMMY GLASS

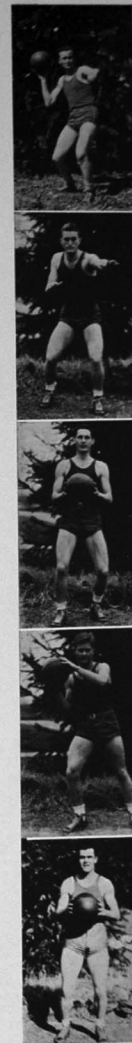
JAMES SAPP

JAMES BOLTON

Starting the season off with a victory over an independent team, our basketballers continued throughout the season with mediocre playing. At times there was a decided improvement but somehow there was a return to average playing.

Captain White was the spark plug of the team. He held down the forward position and played consistently both an offense and defense. He was accompanied by a rather brilliant array of players including, John Norwood, C. T. Manly, Tommy Glass, Thomas Ramsay, James Forte', Hilary Horne, John Williams, James Sapp and James Bolton.

The team as a whole showed remarkable skill individually but the teamwork was lacking. The season was climaxed by a thrilling victory over an old rival, Poplarville. In this game the squad played like champions.





TRACK

As we look over last year's squad we find only four varsity men left. At the head of the 1938 squad is Captain Frank Foster, Tennessee Champ in the 440, who due to injuries was out most of last season, but now he is turning in some fine performances at his specialty, in addition to carrying the anchor on the mile relay.

Joe Coords, Mississippi Junior College State Champ in the mile run is again showing excellent form at the 880 and the mile with the same amazing endurance that he had last year and added speed.

Milton Zelmanowitz is improving a good record at the 880 and the 440, as well as holding up a leg in the mile relay.

Moe Shapiro is looking even better than before with his rare form on the low fences and in the flat dashes.

Several outstanding performers are found in the new comers of whom Bob La Terza is one of the best with his good time at the 440 and 880. Sal Migliaccio shows some of the best work of the team in the 100, 220, and legging the mile relay. Elbert Webb is pushing the sprinters to fast time and is giving a good account of himself at the broad-jump. Lindfield Smith, a novice at the game is making himself felt in the 440 and the 880.

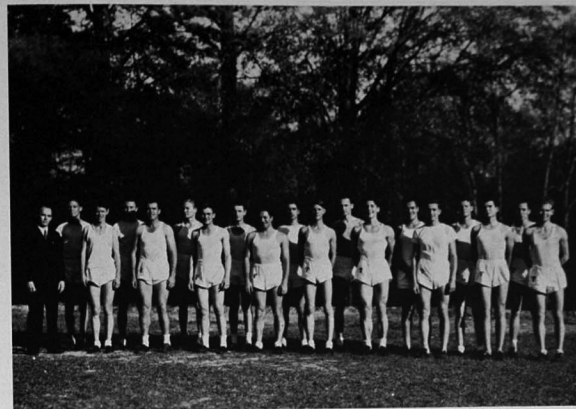
Others showing promise of aiding Perk win another state title are:

Vaulters—Lucien Kidd, Bill Weaver; High Hurdles—Bob Weaver; Shot Put—Johnnie Green, Dallas Smith; Discus—Cyril Pearson, J. C. White, Warren Oliver; Javelin—R. L. McGilvray; Sprints—Hal Perlman; Middle Distance—Hall Buchanna, R. L. McArthur, Robert Corrales, Herschel Nash; High Jump—Howard Pollock, John Norwood.

GIRLS' TRACK

Coach O'Neal started off this year without a single member of the '37 squad but the new team offers excellent material and Perk is looking to them for a good record.

Captain Sally Core has excellent records in the 75, 50, and broad jump and a great deal of the success of the team will depend upon her performance. Bessie Lee Dawkins is to be highly commended for this year is her first experience on the cinders and she is proving herself of great value to the team in the 50, 75, high jump and relay. Frons Sprinkle has good form and shows up well in the 50, broad jump, relay and baseball throw. Elise Netherland serves well in the 50 and the relay and Julia Hanson is valuable to the relay team.

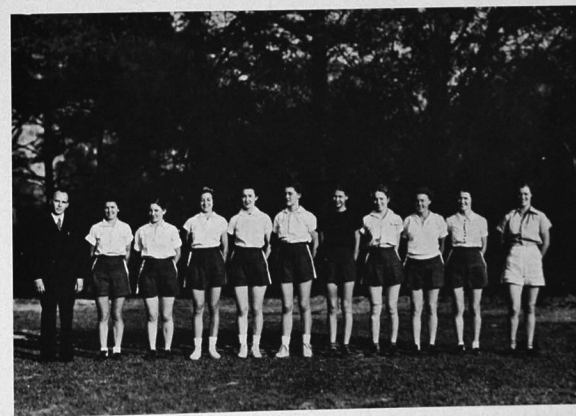


BOYS' TRACK

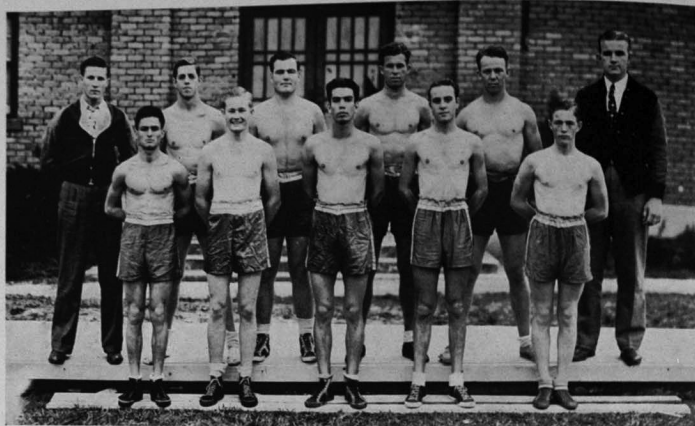
FIRST Row: Joe Coords, James Bolton, Harold Carraway, Moe Shapiro, Lucien Kidd, Howard Pollock, Bob La Terza, Elbert Webb, Milton Zelmanowitz.

SECOND Row: Coach O'Neal, Linfield Smith, Harold Perlman, Bob Weaver, Marshall Nesmith, Salvatore Migliaccio, Frank Foster, Johnnie Green, Leo Davis, Hal Buchanan.

GIRLS' TRACK



Coach O'Neal, Julia Hanson, Elise Netherland, Christine Saucier, Katye O'Neal, Theresa Hubert, Betty Wight, Olga Frisa, Frances Gunn, Bessie Lee Dawkins, Sally Core.



BOXING

FIRST ROW: Robert Corrales, Bill Weaver, James Palencia, Arthur Wood, Jack Cook.
SECOND ROW: Bud Lewis, Victor Royal, Bryce McMahan, R. L. McArthur, Dallas Smith, James Hopper, Mgr.

The boxing team closed a very successful season this year with victories in four of their six matches. Although many new faces appeared on the squad all proved to be seasoned boxers. Coach Lewis did an excellent job of coaching, developing four state champions. Captain McMahan concluded his two years of boxing undefeated, winning eight bouts and drawing two, and climaxed his career with the state championship.

Arthur Wood sustained an injury to his arm early in the season which forced his withdrawal from the squad.

Robert Corrales won the state championship in the bantamweight division, being victorious in three bouts and losing one.

Victor Royal, although with little ring experience, came through with a good record in the Bulldog squad.

R. L. McArthur scored a number of knockouts, climaxed the season by winning the state championship.

Jack Cook, freckled-faced, red-headed Texan, turned in a fine record until he sustained an eye injury which stopped his rapid progress.

Bill Weaver, tough coast battler, fought his way into the hearts of Perk's ring fans. He deserves recognition as one of the gamest fighters in Bulldog history.

James Palencia, after a slow start, came into his own in the middle of the season to do himself and Perkinson credit.

Dallas (Cannonball) Smith, middleweight champion, turned in the squad's best record with five victories and one draw.



BASEBALL

FIRST ROW: Bob McGahey, Lavert McGahey, Frank Hodges, J. Bolton, "Plug" Oliver, Solon Ethridge, C. I. Manly, "Red" Davis, Pat D'Auria, R. Switzer, Bob Kureau.

SECOND ROW: Coach Rexinger, Spencer Miller, J. Williams, M. NeSmith, "Tex" McGilvray, C. T. Coffman, James Forte, James Sapp, Victor Royal, Johnnie Simmons, Mgr., Bill Weaver.

All that remains of the team that were runners up in last year's conference are: Pat D'Auria who is piloting the nine this year as captain and who has been switched from the hot spot at third to "short". Pat is good at defensives and swings a heavy stick. "Tex" McGilvray, who held down left field in '37, has been switched to the hot spot because of his powerful defense. "Red" Davis, playing right field last year, has swung over to left field where he holds title to the high ones; he's another hard hitter. Ben Oliver is the second baseman, a '37 letter man who is making an excellent showing this year.

Among the new comers are: Bob Kureau, who is No. 1 pitcher and also commands a powerful bat, he is very promising and much is expected of him. John Williams has become an excellent center fielder and a heavy hitter. He will be of value to the team due to his previous experience. Behind the bat we find C. T. Manly holding on to the fast ones and rapidly developing into a top-notch receiver.

The remainder of the squad consists of: Pitchers—James Forte, Lavert McGahey; Catchers—Bob McGahey, James Bolton; Infielders—Solon Ethridge, Marshall NeSmith, James Sapp, C. T. Coffman, Victor Royal; Outfielders—Frank Hodges, Spencer Miller, Hilary Horne, Reginald Switzer; Manager—John Simmons; Coach—A. I. Rexinger.

THE COUNTRY CLUB

The Country Club is an infant organization of golfers on the campus. Coach Walker called for those interested in this sport and developed them into an effective group which studies golfing, its history and value. The club also handles effectively the big job of keeping the golf course in condition.

Officers: Spencer Miller, President; Victor Royal, Vice-President; Olga Frisa, Sec't. and Treasurer.



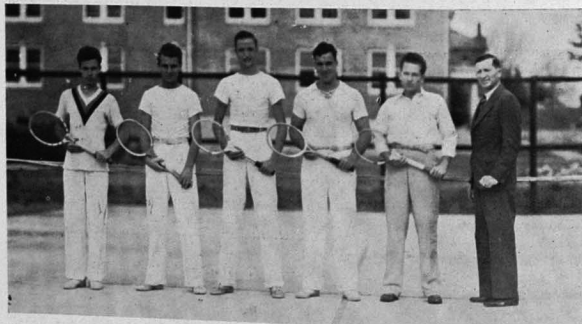
Coach Weeks, Dorothea Thomas, Orlene Smith, Louise Roberts, Julia Hanson, Jetta Jarrell.

TENNIS

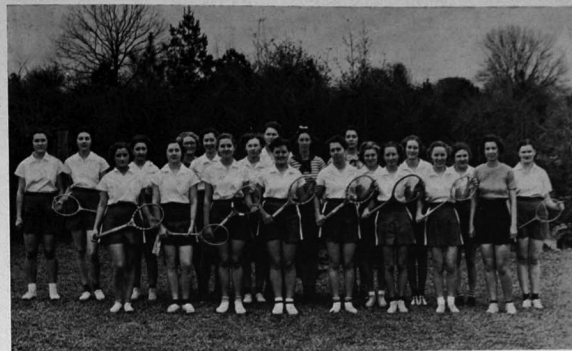
The Bulldog netmen look forward to a repeat on the successes of their 1937 season. The Perksters are defending championships in boys' and girls' singles and boys' doubles.

The boys' team, composed of Lawrence Kenneth, singles, and William Goff (Captain), and Johnnie Green, doubles. The alternate team is composed of Angus McBryde and Linfield Smith, who bid fair to carry out team honor in 1939. Martin Menger is alternate player and Bernard Reeves, manager.

The Girls' team is composed of Frances Gunn, singles, Jetta Jarrell and Louise Roberts, doubles, and Orlene Smith and Julia Hanson, alternates. It is up to Frances to retain the girls' singles honors won by Eleanor Stowd in 1937, and the task of Jarrell and Roberts to gain the only trophy that Perk did not take.

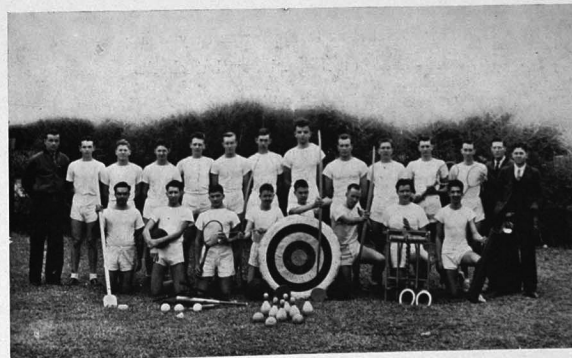


Bernard Reeves, William Goff, Captain; Martin Menger, Johnnie Green, Lawrence Kenneth, Coach Weeks.



PHYSICAL EDUCATION

This is the first year of the Physical Education classes which are under the direction of Miss Thombs and Coach Walker. They have become major factors in the development of the students, physically and in the encouragement of the profitable use of the leisure time. The members of the class get instructions on how to play and take active interest in golf, tennis, horse shoe throwing, croquet, basketball, bowling, archery, shuffle-board and soccer.



Test We Forget

HARVEY O'NEAL
WOODROW C. COX
IRVING WALTERS

He is a portion of the loveliness
Which once he made more lovely: he doth bear
His part, while the one Spirit's plastic stress
Sweeps thro' the dull, dense world, compelling
there
All new successions to the forms they wear;
Torturing the unwilling dross that checks
its flight
To its own likeness, as each mass may bear;
And bursting in its beauty and its might
From trees and beasts and men into the
Heaven's light.

—"Adonais" by Shelley

"PERK" DIARY

SEPTEMBER 16—Most popular phrase: "I want my mama."
SEPTEMBER 18—Chapel. We'll move in about two weeks.
SEPTEMBER 25—Football with Ellisville. 6-6.
OCTOBER 2—Football with Summit. Beat 'em, too.
OCTOBER 3—Chapel. We'll move in about two weeks.
OCTOBER 9—Football with Springhill. "Whooped them to the ground."
OCTOBER 20—Home Coming—Man, what a day, but did we lose that game. New dormitory dedicated.
OCTOBER 23—Football with Millsaps. We took them in strides. 6-0.
OCTOBER 24—Backward Dance—Jolly, I'll bet I never get broke again.
NOVEMBER 3—Chapel. We'll move in about two weeks.
NOVEMBER 19—Football at Poplarville. Brrrrr—nearly froze and we lost 6-0.
NOVEMBER 20—Utopia at last. We moved.
NOVEMBER 24—Thanksgiving Holidays. Bring it on.
DECEMBER 3—Debates and we won. Nice going!
DECEMBER 9—Debates. Lost. Does the speaker yield? Nope.
DECEMBER 11—Football banquet and dance. What fun!
DECEMBER 16—Christmas Carols. "Singing in the Rain."
DECEMBER 18—Home for Christmas. June in January.
JANUARY 7—Boys played basketball. We lost.
JANUARY 8—Second verse, same as first.
JANUARY 9—Mike Mousike arrives. Quick, Watson, the interpreter. Smile a few words.
JANUARY 14-15—Basketball with Ellisville. Girls won, boys lost.
JANUARY 15—The Big Apple rage.
JANUARY 19—Basketball at Mobile. A double victory, by heck.
JANUARY 20—Man, that Dr. Inglevolstad is the stuff!
JANUARY 25-28—Exams. Electric light bill jumps 50%.
FEBRUARY 3—Putting on the Ritz. Installation of the New Country Club. Special attraction: Dues may be worked off.
FEBRUARY 5—Have my pictures come?
FEBRUARY 7—Rufus Rose Marionettes. "How you, Sam?"
FEBRUARY 9-12—Basketball trip. Glad to see them back.
FEBRUARY 24—Annual Program. The Nuts!
FEBRUARY 24—Y. W. C. A. Mock Wedding. The prettiest yet.
MARCH 4-5—Basketball girls go to tournament.
MARCH 6—"Whites" beat "Golds." Golds go swimming.
MARCH 8—Piney Woods Singers. They are good.
MARCH 9—Oh come on, let me see his picture.
MARCH 15—Glee Club gives "Cleo." Beers goes wild.
MARCH 17—Dr. Kornfeld. "I will tell you," and he did.
MARCH 19—New organization installed. "Water Club." Dues \$5.00. We're working our way through college.
MARCH 21—Phi Theta Kappa initiation. Congratulations.
MARCH 22-25—Dad Elliot. We wish we had more like him.
MARCH 24—Rain. Lost: One track.
MARCH 25-26—Boxing at Raymond. We was robbed.
MARCH 31—Dr. Kornfeld gets the New Yorkers told.
APRIL 2—"P" Club masquerade dance. Oh I knew you all the time.
APRIL 4—The wind still blows on the S.E. Side of the bushes. Isn't this cozy?
APRIL 7—Shakespearan play. Rain and Macbeth.
APRIL 6—Stay on the right side, people -- quadrangle to you. Paradise Lost -- Ain't it so?
APRIL 8—I told you to keep those woolen "undies".
APRIL 9—Band Contest. That many more people appreciate Perk.
APRIL 10—Amateur Contest. A professional in the making. Earned one buck. (\$1.00)
APRIL 15—Spring Holidays.
APRIL 17—When are my pictures coming?
APRIL 19—Holidays over. Aspirin stock jumps six points. O dear what can the matter be?
APRIL 30—Y. W. C. A. Spring Retreat. My what cooks we have.
MAY 7—Track with Ellisville. You should have seen him check.
MAY 13—May Day Program. Have you a fairy in your house?
MAY 14—Boat Ride. "Nuf said.
MAY 21—Dance. My, Oh my!
MAY 21—Annual Picnic.
JUNE 2—We think maybe Mike will have the pictures—we hope.
JUNE 3—Consult Sears & Roebuck for the best price on Annuaire.
JUNE 3—Ad seen in local paper: Wanted twelve bright students for 1938-39 Staff.
Summer's rest and Wheaties are advised before and after taking.
JUNE 4—Dear Perk, if we could only come back next year!

We, the staff, wish to thank for the student body the following:

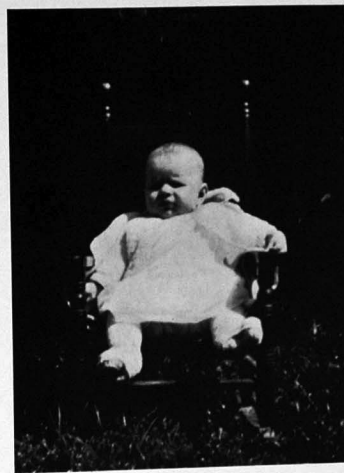
The Federal Government and State for placing at our disposal this educational institution and to the counties whose residents support the school.

The faculty and officials for cooperating to the fullest extent in making this annual possible.

Our sponsor, Professor Ingram, for his diligent and valuable assistance.

The individual members of the school for their material and moral support which has helped us unmeasurably.

Announcing !!
THE
PERKOLATOR EDITOR
FOR
1956



MISS HELEN JOYCE DARBY

OUR ADVERTISERS

We, the Staff, wish to express our appreciation to our advertisers who have helped make our annual possible. The establishments represented in this publication stand for those that are the backers of our school.

Let us, the students of "Perk," express our appreciation of their support in a material way. Read carefully the advertisements; see for yourself who your friends are; and when you have purchases to make, make them from the persons who have helped you. Let this be our motto:

"Back the backers of Harrison-Stone-Jackson Junior College."

HARRISON-STONE-JACKSON

Agricultural High School and Junior College



The Harrison-Stone-Jackson Junior College is a member of the State Association of Colleges, the Southern Association of Colleges and Secondary Schools, and the American Association of Junior Colleges. Its work is recognized as standard anywhere in the South.

The College owns 650 acres of land, is housed in 14 large buildings, and has an enrollment this year of 325 students.

In addition to two years of academic work, the college maintains strong departments in commerce, music, agriculture, and home economics.



Perkinston, Miss.

C. J. Darby, Supt.

COMPLIMENTS OF

THE TOGGERY

MITCHELL SOLLOUM

Gulfport

Mississippi

Jones Bros. Drug Co.

The Rexall Store

Gulfport

Mississippi

COMPLIMENTS OF

M. SALLOUM Department Store

Gulfport

Mississippi

COMPLIMENTS OF

Hamilton Bros. Co.

ROOFING, SHEET METAL
PLUMBING & HEATING

Gulfport

Mississippi

LORAIN FLOWER SHOP

WE TELEGRAPH FLOWERS ANYWHERE FLOWERS FOR ALL OCCASIONS
Across From Paramount Theater

Gulfport

Mississippi

COMPLIMENTS OF

ROSENBLUM'S DEPARTMENT STORE

GULFPORT

FOR VALUES

MISSISSIPPI

COAST HARDWARE

HOME OF JOHNSON OUTBOARD MOTOR AND NORGE APPLIANCES

GULFPORT

1310—1312 25th Avenue

MISSISSIPPI

RIEMANN FUNERAL HOME

PHONE 29-J

GULFPORT, MISSISSIPPI

1718 25th AVENUE

STEWART-SNEED & HEWES, Inc.

FIRE — WIND STORM — CASUALTY & BONDS

Phones 170-171

Gulfport

Mississippi

MERCHANTS CAFE

26th AVENUE — NEXT TO PARAMOUNT THEATRE

Gulfport

Mississippi

WIGGINS DRUGS

SHEAFFER PENS & PENCILS

Wiggins

Mississippi

WILSON PHARMACY

THE PRESCRIPTION DRUG STORE

Wiggins

Phone 23

Mississippi

TRENTON'S SUPPLY

HARDWARE AND FARM MACHINERY

Wiggins

Mississippi

Come Clean With Us
And We Will Dye For You

Wiggins Dry Cleaners

WIGGINS

MISSISSIPPI

DRINK

COCA-COLA

IN BOTTLES

BARNETTE CHEVROLET CO.

Woco Pep Gasoline — Yale Tires — Pure Tioline Motor Oils

FLOYD WIGGINS, Service Station Manager

Sales



Service

Wiggins

Phone 9103

Mississippi

Come Spend the Week-End
With Us

CITY OF BILOXI

LOUIS BRAUN, Mayor

F. A. TUCI, Com. of Finance and Education

JOHN SWANZY, Com. of Public Works

EAT THE BEST FOR LESS

ROSE'S HUT

30th Avenue

Gulfport

Mississippi

THE GROVE

Gulfport, Miss.

COLLEGE BOOK STORE

ON THE CAMPUS

The Place to get Books, Note Books, Stationery, Candy

RUSSELL COON

CRAWFORD DEES

NATURAL GAS

BETTER FOR

Cooking, Water Heating, House Heating,

REFRIGERATION

SOUTHWESTERN GAS & ELECTRIC COMPANY

BILOXI - GULFPORT - PASS CHRISTIAN - MISS. CITY - HANSBORO - LONG BEACH

SOUTHERN COAL COMPANY, Inc.

MINERS AND SHIPPERS OF

HIGH GRADE STEAM AND DOMESTIC COAL

MEMPHIS

General Office

TENNESSEE

THE POWERS COMPANY

PRINTING — LITHOGRAPHING — ENGRAVING — SCHOOL SUPPLIES

Blank Paper — Mimeographing and Ditto Machines and Supplies

Mobile

Alabama

VENUS CANDY CO.

Phone 370

Biloxi

Mississippi

H. T. COTTAM & CO., Inc.

Gulfport, Mississippi

WHOLESALE GROCERS AND DISTRIBUTORS

COMPLIMENTS OF

L & N BAKING CO.



HOME OF

SERVICE AND QUALITY



Biloxi

Mississippi

Phone 196



Never Mind Your Music

Lesson . . . Here Comes A Parade!

No wonder there is a Parade to Alex Loeb's, formed by men who demand Style, Fit and Value in Suits, Coats, Sport-wear and Accessories.

Women, too, are finding "the last word" in suits, coats and smart accessories at Alex Loeb's . . . first.

Alex Loeb Inc.
RELIABLE CLOTHIERS
~ MERIDIAN, MISS.

COMPLIMENTS OF
Monarch Chemical Co.
 New Orleans, La.

MANUFACTURERS OF
 DISINFECTANTS
 INSECTICIDES
 SANITARY SUPPLIES



Compliments of
**BALLARD
 AND
 BALLARD**
 Save
**OBELISK
 Coupons**

PHOTO AT
GULF STUDIOS

Gulfport Mississippi

COMPLIMENTS OF
ANDERSON'S
 MEN'S WEAR

GULFPORT

MISSISSIPPI

HANCOCK COUNTY BANK

Gulfport

Pass Christian

Bay St. Louis

DODGE PRINTING CO.

P. O. BOX 455

PHONE 832

Gulfport

Mississippi

H & H CAFE

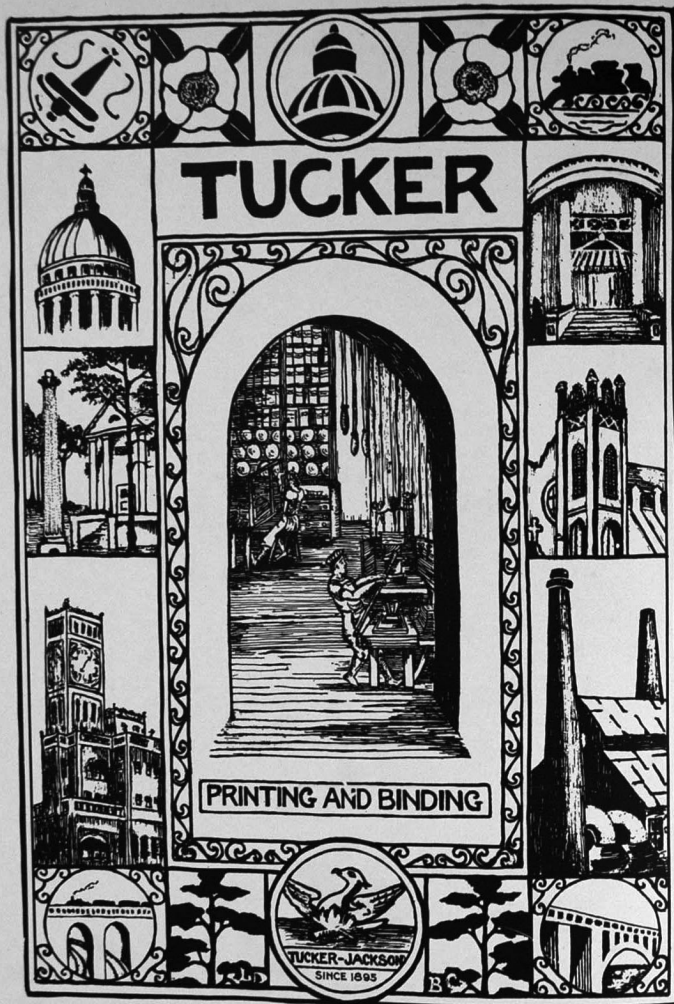
WE SPECIALIZE IN SEA FOODS

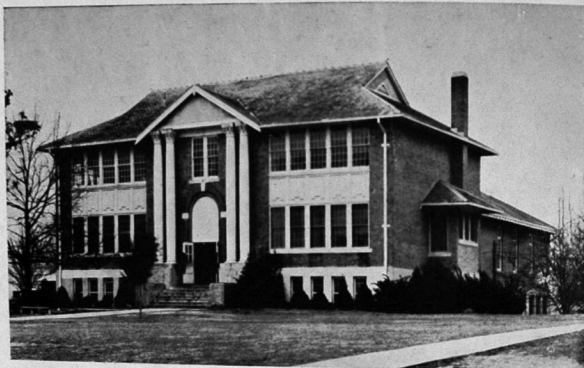
Gulfport

Mississippi

PICTURES
 Have Made Your Yearbook Live...
 Good Plates Faithfully Reflect
 Your Pictures
Many Happy Memories
Mississippi
ENGRAVING
 Jackson, Miss. COMPANY

AUTOGRAPHS





The

END