

TUCKER PRINTING HOUSE

Foreword..

TUCKER PRINTING HOUSE — JACKSON, MISSISSIPPI

"Annual specialists for over twenty years"

The
Perkolator
1939



PERKINSTON
JUNIOR COLLEGE
/ presents

—the

PERKOLATOR

1939

Published by the
Students of
Harrison-Stone-Jackson
Junior College and
Agricultural High School
Perkinston, Mississippi



COPYRIGHT—EDITOR.

"SALLY" JANÉ. BUSINESS MANAGER, STEPHEN WHETSTONE

FOREWORD

*"Build me straight, O worthy Master!
Staunch and strong, a goodly vessel,
That shall laugh at all disaster,
And with wave and whirlwind wrestle!"*

It is only fitting that we pay due homage to Henry Wadsworth Longfellow who wrote the poem "The Building of the Ship" which we have used as a theme throughout our book.

The poem is representative of the building of a man's character so one can readily see how well we, on the staff of the "Perkolator", feel that our school stands for all that is brought out in the poem. The young boy or girl who enters here is a very innocent and believing person, but goes out with eyes open and with improved mind.

ALMA MATER

*Way down South there's a school that we all know,
Where the winds from the gulf doth ever blow.
'Mong the pines so stately and so tall
We listen to your call,
We love you best of all.*

*Fame was thine through the years of the past,
And we know thy name shall ever last.
Thou art noble, proud, and true,
Oh, Perkinson, we all love you!*

CONTENTS

Administration

Classes

Features

Activities

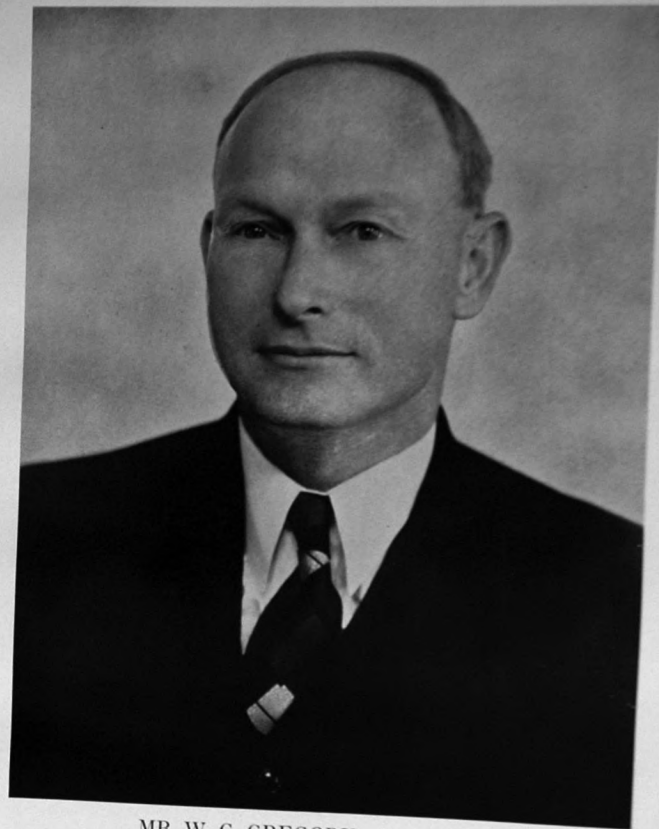
Athletics

*C*O MR. GREGORY who, for the past thirteen years has been head of the Mathematics Department of this school, and, who has wielded a high influence over the students as the years have come and gone. His efforts have been inspiring to the students who have been under him and as leader of the Y. M. C. A. he has been untiring in his leadership for all those things that stand for higher standards and good citizenship.

In recognition of his splendid achievements and loyalty, we dedicate this, the fourth annual edition of the Perkulator to Mr. W. G. Gregory.

"Many men of genius must arise before a particular man of genius may appear."

D E D I C A T I O N . . .



MR. W. G. GREGORY—B. A., M. A.
Mathematics

TENNIS COURTS

HARRISON HALL

TEACHERS' DORMITORY

DINING HALL

SCIENCE BUILDING

FRESHMAN DORMITORY

VARSIITY HALL

ADMINISTRATION BUILDING

GYMNASIUM

The C A M P U S . . .



The CAMPUS ON THE HILL



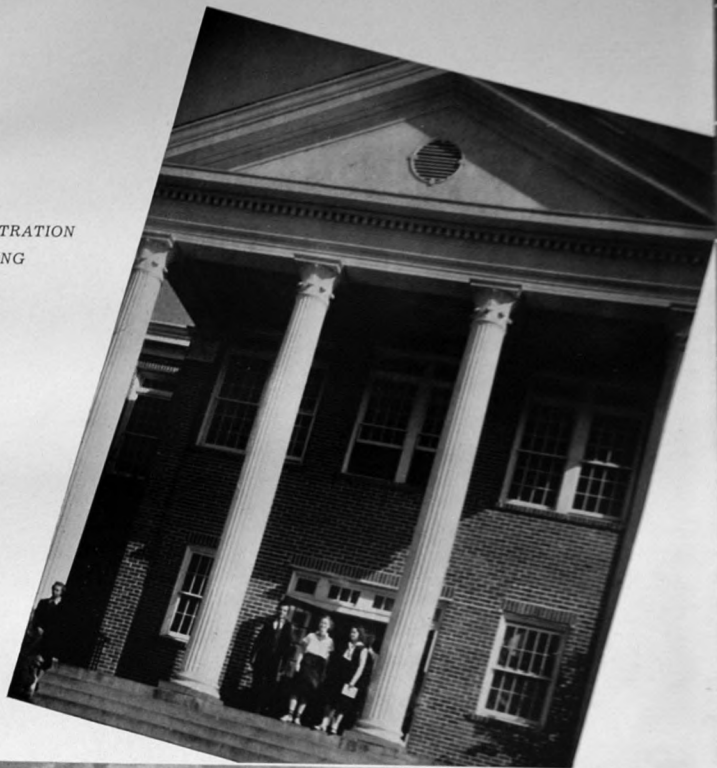
DORMITORY NO. 2 AND
DINING HALL

DORMITORY NO. 4 AND
TEACHERS' HALL

Varsity Hall

HARRISON HALL
SCIENCE BUILDING
IN THE BACKGROUND

ADMINISTRATION
BUILDING



BOARD OF TRUSTEES

President

VINSON B. SMITH, SR. - - - - - Gulfport

Vice-President

H. P. HEIDLEBERG - - - - - Pascagoula

Secretary

J. E. ROBERSON - - - - - Wiggins

W. LUTHER BLACKLEDGE - - - - - Saucier

M. A. COLMER - - - - - Howison

J. K. MILNER - - - - - Gulfport

J. L. LADNER - - - - - Gulfport

VICTOR PRINGLE - - - - - Biloxi

T. W. LOTT - - - - - Wiggins

J. N. DEDEAUX - - - - - Perkinston

D. E. SMITH - - - - - Perkinston

FORD O'NEAL - - - - - Perkinston

G. A. BRELAND - - - - - Perkinston

M. B. CUMBEST - - - - - Escatawpa

E. E. FLURRY - - - - - Perkinston

O. H. MARTIN - - - - - Moss Point

MARY O'KEEFE - - - - - Ocean Springs

A. F. MEGEHEE - - - - - Pascagoula

"Ere long we will launch
A vessel as goodly, and strong
and staunch,
As ever weathered a wintry
sea!"



The
ADMINISTRATION

Co MR. DARBY

Cooper J. Darby was born January 24, 1896, at McHenry, Mississippi. He attended a one-teacher public school near McHenry for three or four years, later moving to Saucier, Mississippi, and attending the public school there for two years. His next home was Nugent, Mississippi, where he completed the rural high school there.

From 1913 to 1918 alternately he taught in the rural schools of Harrison County and attended State Teacher's College at Hattiesburg. In the year of 1918 he was in the army assigned to S. A. T. C. of the University of Texas but was discharged from the army after an enlistment of slightly less than two months. In September, 1919, he entered State Teachers College and remained there until June, 1921, when he was graduated from that institution with a diploma which at that time represented about three years of college work.

From September, 1921, to June, 1923 he was principal of the Avery High School, Greene County, Mississippi. During the summer of 1922 he was a student at George Peabody College at Nashville, Tennessee. In August, 1923, he was elected County Superintendent of Education of Harrison County, Mississippi and while he held this office he spent his summer months attending State Teachers College, where he was granted the B. S. Degree in August, 1928. Graduate work at Tulane University was accomplished and since coming to Perkinston he has done one summer graduate work at the University of Alabama.

He accepted the Presidency of Harrison-Stone-Jackson Junior College, in 1929. In the spring of 1930 several important experiences came in rapid succession. Within the space of a little less than thirty days he experienced a bank failure where the school had its funds, conducted his first graduating exercises at the junior college, had an operation for appendicitis, and was married to Miss Grace Quarles of Long Beach, Mississippi. He is now the proud father of an attractive little daughter, Helen Joyce.

Any Perkinston student who has had the privilege of knowing him will feel that these lines express Mr. Darby's philosophy of life:

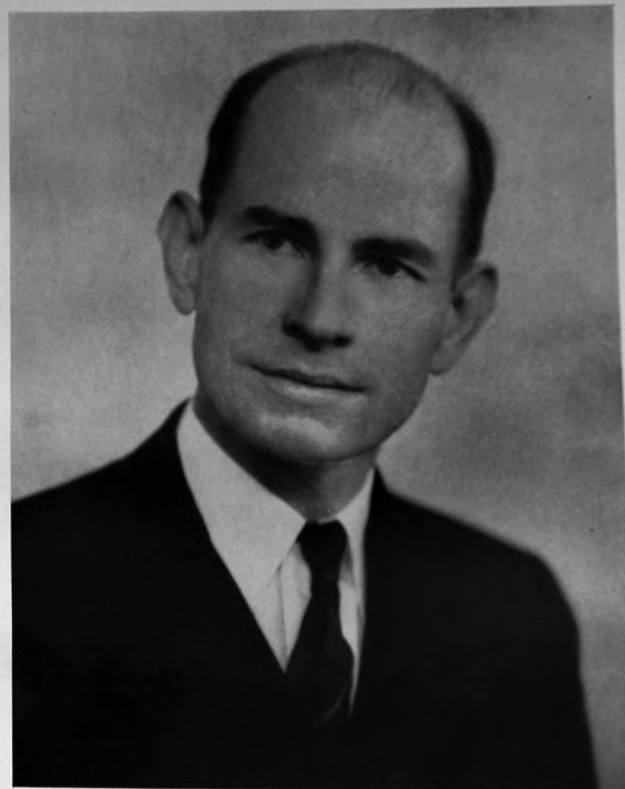
"The best law--the golden rule.

The best education--self-knowledge.

The best statesmanship--self-government.

The best engineering--a bridge of faith over the river of death."

—SELECTED.



PRESIDENT C. J. DARBY



The FACULTY

JULIA B. SLAY - - - - - Dean of Women

L. R. WEEKS, B.S. - - - - - Dean of Men, Mathematics

EDNA ELLEN HANEY, B.A., M.A. - - - - - English

INA MAE HART, B.A., B.S., M.A. - - - - - Commercial

C. O. HINTON, B.S., M.S. - - - - - Chemistry

GRACE FRAZIER, B.A., M.A. - - - - - Language



F. O. PARSONS, B.A., M.S. - - - - - Agriculture

DOROTHY BROWN, B.A., M.A. - - - - - English

B. P. RUSSUM, B.S., M.A. - - - - - Education, Registrar, Social Science

D. D. O'NEAL, B.A., M.A. - - - - - Social Science, Athletics

MARY ELEANOR JOHNSTON, B.S., M.A. - - - - - Home Economics

T. W. BRASFIELD, B.A., M.S., Ph.D. - - - - - Science



The F A C U L T Y

JAMES H. BAULCH, B.A. - - - - - Commercial
 ELIZABETH DAVIS, B.M. - - - - - Music, Glee Club
 STANLEY C. BEERS, B.A. - - - - - Mathematics, Band
 ELTON DALIER, B.S. - - - - - Physical Education, Social Science
 L. P. INGRAM, B.S. - - - - - Science, Mathematics
 IRENE MORRISON, B.S. - - - - - English
 ROSE McELROY, B.A., B.S., M.A. - - - - - Librarian



A. S. HUNT - - - - - Bookkeeper
 BILL DAVID - - - - - Secretary
 REVEREND RIDGEWAY - - - - -
 REVEREND FRANCIS McCOLLAM - - - - -
 REVEREND R. H. CAMPBELL - - - - -
 A. I. REXINGER, B.S. - - - - - Athletics, Physical Education
 MRS. L. R. WEEKS - - - - - Dietician

In MEMORIAM

MR. ELLIS CARRAWAY

MRS. EMMA COVINGTON

REV. FRANCIS McCOLLUM

*That loss is common would not make
My own less bitter, rather more.
Too common! Never morning wore
To evening, but some heart did break.*

* * * * *

*I hold it true, whate'er befall;
I feel it, when I sorrow most;
'Tis better to have loved and lost
Than never to have loved at all.*

* * * * *

—In Memoriam, TENNYSON

The SOPHOMORES



*In the ship-yard stood the Master,
With the model of the vessel,
That should laugh at all disaster,
And with wave and whirlwind wrestle!*

OFFICERS

PAUL GRAHAM	- - - - -	President
HARBERT DALE	- - - - -	Vice-President
JEWEL WILLIAMS	- - - - -	Secretary-Treasurer
ANGUS McBRYDE	- - - - -	Student Council Representative

PAUL WESLEY GRAHAM - - - - - Bentonla
Y.M.C.A. '38, '39; Phi Theta Kappa '38, '39; B.S.U.;
Student Council '39; President Sophomore Class '39.
"BOOTS"

"He that respects himself is safe from others; he
wears a coat that none can pierce."

JOHN HARBERT DALE - - - - - Wiggins
Student Council; Y.M.C.A.; Agriculture Club;
State Exam. Horticulture '38; Vice-President
Sophomore Class '39.
"LUCEDALE"

"You'd have to know him to appreciate him."

JEWEL WILLIAMS - - - - - Moss Point
Band; Wesley Foundation; Y.W.C.A. '38, Vice-
President '39; Secretary Sophomore Class '39.
"Great oaks from little acorns grow."

ANGUS MITCHELL McBRYDE - - - - - Sumrall
Student Council '39; Phi Theta Kappa '38, '39;
International Relations '39; Wesley Foundation '38,
President '39; Language Club '38, '39; Y.M.C.A. '38,
'39; Tennis '38, '39; State Exam. French '38.
"Words are like leaves and where they most abound,
Much fruit of sense beneath is rarely found."

FAYE ALLEN - - - - - Perkinston
"Odds bodkins! You play divinely ma'am!"

EVELYN BLACK - - - - - Purvis
Phi Theta Kappa '38, '39; Language Club '39; "P"
Club '38, Vice-President '39; Basketball (lettered)
'38, '39; Y.W.C.A. '38, '39.
"LITTLE EBB"

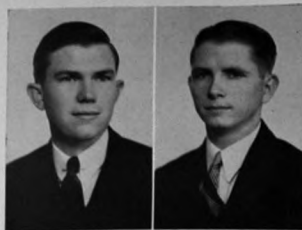
"Art she has none, yet wanted none,
So rich in treasures of her own."

LOIS BLACKWELL - - - - - Lyman
Glee Club '39.

"She is reserved--she prefers her company to others."

WILLIAM BLAKELY - - - - - Hattiesburg
Football (lettered) '38, '39.
"BILL"

"Tell him of Jacob's ladder and he would ask the
number of steps."



MYRTLE BRELAND - - - - - Wiggins
"They say she can really cook."

ROLAND BREWTON - - - - - Pensacola, Fla.
"POKEY"

"He certainly produced a most exhilarating
effect on one."



JOHN BUTLER BROWN, JR. - - - - - Perkinston
Student Council '39; Y.M.C.A. '38, '39; Agriculture
Club, Vice-President '39; Basketball.
"Give him a basketball and watch him go."

BENJAMIN HAL BUCHANNAN - - - - - Pelahatchie
President Student Council '39; Y.M.C.A. '38, '39;
Dramatic Club '39; Track '38, '39; Football '38.
"HAL"

"You hear that boy laughing?
You think he's all fun,
But the angels laugh too at the
Good he has done."



GWENDOLYN CARPENTER - - - - - Gulfport
Y.W.C.A. '38, '39; Commercial Club Secretary '39;
Band '38; Wesley Foundation.
"GWEN"

"Dimpled cheeks, and laughing eyes
Blue as bluest summer skies."

CLYDE ALVIN CARRIER - - - - - Pascagoula
Glee Club; Y.M.C.A.
"LADDIE"

"Speech is great, but silence is greater."



MARGUERITE COLLE - - - - - Pascagoula
Y.W.C.A. '38, '39; Commercial Club President '39.
"A lady of quality--has an agreeable charm."

HELEN COOK - - - - - Wiggins
"Certainly she is a most efficient little brunette."

BEATRICE CORE - - - - Folsom, La.
 "P" Club '38, '39 (Inspiration); Basketball (lettered) '38, '39; Track (lettered) '38, '39; Y.W.C.A. '38, '39; B.S.U. '38; Home Economics Club '38, '39; Country Club Secretary-Treasurer '39; Commercial Club '39; Most Popular Girl '38.
 "SALLY"

"You'll find her in the jokes,
 You'll find her in the game,
 But no matter where you find her,
 She's always just the same."

DOROTHY COVINGTON - - - - Wiggins
 Y.W.C.A. '38, President '39; B.S.U. '38, '39; Commercial Club '39; Dramatic Club '39; International Relations '39; Vice-President Freshman Class '38.
 "DOT"

"She never complains of hard work; instead she willingly does it."

RANDALL DEDEAUX - - - - Perkinston
 International Relations '38, '39; Phi Theta Kappa '38, '39.

"I ain't worth a darn at spinning a yarn what wanders away from the truth."

CRAWFORD DEES - - - - Pascagoula
 Y.M.C.A. '38, '39; Student Council '39; Best Freshman '38.

"His hair is the envy of many a girl."

BERTRAN NORMAN DRISKELL - - - - Wilma, Ala.
 Phi Theta Kappa '39; Agriculture Club.

"A good scout and an excellent student."

RALPH CLEMENT DRISKELL - - - - Wilma, Ala.
 Phi Theta Kappa '38, '39; Agriculture Club, President '39; Y.M.C.A. '38, '39.

"The machine that makes the least noise does the best work."

SOLON ETHEREDGE - - - - Town Creek, Ala.
 Football (lettered) '38, '39; Baseball '38, '39; "P" Club.

"A wee bit of a man was he."

JAMES WILLIAM FORTE, JR. - - - - Pensacola, Fla.
 "P" Club, (lettered) '38, '39; Basketball '38, '39; Baseball '38, '39; Track '38.

"PICKLE"

"Smile and the world smiles with you."



ROBERT OWEN GERNON - - - - Gulfport
 International Relations '38, '39; Tennis '39.
 "GERNON"

"Be bold, but not too bold."

THOMAS HOSEY GLASS - - - - Biloxi
 Y.M.C.A. '38; Football (lettered) '38, '39; Basketball '38, '39; Track '38; Newman Club; "P" Club.

"TOMMY"

"I was never less alone than when by myself."

HARRY ELLIS GOZA - - - - Hattiesburg
 Y.M.C.A. '38, '39; Football '38; Manager Girls' Basketball '39.

"GOZA"

"Not afraid of work but not in sympathy with it."

MILDRED GRAY - - - - Gulfport
 Y.W.C.A. '38, '39; Wesley Foundation '38, '39.

"Nature has made her what she is;
 We know not what will change her."

RICHARD BENJAMIN HARRISON - - - - Biloxi
 Y.M.C.A. '38, '39; Wesley Foundation; Commercial Club.

"DICK"

"For even though vanquished, he could argue still."

F. J. HAYNES - - - - Mendenhall
 Football '38, '39.

"SLEEPY"

"A friend may well be reckoned the masterpiece of nature."

DIXON HODGES - - - - Ocean Springs
 Y.M.C.A. '38, '39.

"POSEY"

"His thoughts went drooping into dreams, though never trembling into sound."

FRANK HODGES - - - - Kosciusko
 Football (lettered) '38, '39; Basketball '38; Y.M.C.A. '38.

"STUMPY"

"It is better to wear out than to rust out."

The SOPHOMORE Class

SARA HOUSE - - - - - Saucier
Wesley Foundation '38, '39; Y.W.C.A. '38, '39.
"She does combine virtuous, prudish airs with dark beauty."

THERESA HUBERT - - - - - Bush, La.
"P" Club '38, Treasurer '39; C.W.A.A. President '39; Home Economics Club '38, '39; Annual Staff '39; Basketball (lettered) '38, '39; Y.W.C.A. '38, '39.
"Her light blue eyes won't admit that her mind is far away."

SARA AIMEE JANE - - - - - Pascagoula
International Relations '39; Phi Theta Kappa '38, Treasurer '39; Football Queen '39; Annual Staff, Editor-in-Chief '39; Y.W.C.A.; Commercial Club; Language Club; Newman Club; Campus Queen '38; Miss Perkinston '38, '39; Glee Club '38, '39; Drum Major '38, '39; May Queen '38; Football Court '38.
"SALLY"

"The glory of our life below
Comes not from what we do or know,
But dwells forevermore in what we are."

JUANITA JONES - - - - - Wiggins
Y.W.C.A. '38, '39; Home Economics Club '38, '39.
"So--she left us for the leader of--her heart."

WILLIAM JASPER LEE - - - - - Wiggins
Y.M.C.A. '38, '39.
"BILLY"

"His head aglow, his head I know
Has long been wrapped in calico."

CHARLES THOMAS LITTLEPAGE - Hattiesburg
International Relations '38, '39; Glee Club '38, '39; Dramatic Club '39; Y.M.C.A. '38, '39.
"CHARLIE"
"His actions speak louder than words."

ESTA LEE LOTT - - - - - Wiggins
B.S.U. '38, '39; Y.W.C.A. '38, '39; Home Economics Club '38, '39; Annual Staff '39; Student Council '39.
"Black tresses such as hers quite often hide a romantic heart."

CHARLES THOMAS MANLEY - Town Creek, Ala.
Football (lettered) '38, '39; Basketball (lettered) '38, '39; Baseball (lettered) '38, '39; "P" Club; Y.M.C.A. '38, '39; B.S.U.
"C. ME"

"Alas, the love of women. It is known to be a lovely and a fearful thing."



RUTH MCCLURE - - - - - Pensacola, Fla.
Phi Theta Kappa '38, '39; Y.W.C.A. '38, '39; B.S.U. '38, President '39; Language Club '39.

"Wisdom she has, and to her wisdom courage;
Temper to that, and unto all success."

EVELYN McQUAGGE - - - - - Wiggins
Phi Theta Kappa '38, Secretary '39; International Relations '38, '39; B.S.U. '38, '39; Y.W.C.A. '38, '39; Band '38; Glee Club '39.

"The quietest, most dignified manner, and a mind that enables her to be."

OMAR MANSON MURPHY - - - - - Vancleave
Y.M.C.A.; Agriculture Club.
"I halt nobody; I am in charity with the world."

MARSHALL BRITTIAN NESMITH, JR., Hazlehurst
Baseball '38, '39; Track '38.
"A willing, generous character who does."

ELISE NETHERLAND - - - - - Biloxi
Y.W.C.A. '38, '39; Cheer Leader '38, '39; Basketball (lettered) '38, '39; "P" Club; B.S.U. '38, '39; Annual Staff '38, '39.
"GYTCHIE"
"The luck that I believe in is that which comes through work."

JOHN NORWOOD - - - - - Bunkie, La.
Football (lettered) '38, '39; Basketball (lettered) '38, '39; Y.M.C.A. '38.
"He's a good sport, if there ever was one;
Wherever he goes he has his fun."

LAURA PARKER - - - - - Wiggins
"LEFTY"
"She can be cheerful even when she is sad."

LILLIE PROCTOR - - - - - Gulfport
Wesley Foundation '38, '39; Y.W.C.A.; Home Economics Club; Dramatic Club; Football Court '38.
"I study all nite long--but Shorthand is a poor substitute for love."

The SOPHOMORE Class

LOUISE ROBERTS - - - - - Vancleave
"P" Club '38, Secretary '39; Y.W.C.A. '38, '39;
Wesley Foundation '38, '39; Commercial Club;
Basketball (lettered) '38, (captain) '39; Tennis
'38, '39.

"LOU GAL"

"Has an excellent heart-prodigiously fine at tennis, and always has an amiable and affectionate manner."

VICTOR ROYAL - - - - - Buford, Ga.
Football (lettered) '38, '39; "P" Club; Baseball
'38, '39.

"VIC"

"He has a heart with room for every joy."

CHRISTINE SAUCIER - - - - - Saucier
Y.W.C.A. '38, '39; Commercial Club; Wesley Foundation '38, '39; C.W.A.A. '38, Vice-President '39.

"CHRIS"

"She thinks 'twould be an awful sin
To wear her face without a grin."

VIRGINIA SCARBOROUGH - - - - - Biloxi
Y.W.C.A. '39; International Relations '38, '39;
Wesley Foundation '38.

"She has the talents of a perfect housewife."

HIRAM RIVERS SINGLETON - - - - - Gulfport
Y.M.C.A. '38, '39; Band '38, '39; Orchestra '38, '39;
Glee Club '38, '39; Wesley Foundation '38, '39.

"RIVERS"

"The world knows only two--Ida Rae and Me."

HORACE SMITH - - - - - Perkinson
"He drinks the pure pleasures of a rural life."

FRONA SPRINKLE - - - - - Pass Christian
"P" Club '38, Reporter '39; C.W.A.A. '38, '39;
Track (lettered) '38, '39; International Relations
'38, Secretary and Treasurer '39; Basketball (lettered) '38, '39; Y.W.C.A. '38, '39; Wesley Foundation '38, '39.

"She likes the girls; she loves the school;
But in her heart the boys rule."

EMMA LOU STOKOE - - - - - Gulfport
Y.W.C.A. '38, '39; Glee Club '38, '39; Commercial Club.

"HAG"

"Very witty, but unconcerned;
She went to class and sometimes learned."



REGINALD SWITZER - - - - - Gulfport
Football (lettered), Captain '31, '39; Baseball '38,
Y.M.C.A. '38; "P" Club; President Freshman
Class '38.

"SWITZER"

"He has a heart to contrive, a tongue to persuade,
and a hand to execute any mischief."

EARL RICHARD TAYLOR - - - - - Ocean Springs
Y.M.C.A. '38, '39; Wesley Foundation '38, '39; Language Club; International Relations '38, '39.

"Silence at the proper time is wisdom, and
better than any speech."

DAVID EARL VALVERDE - - - - - Pascagoula
Phi Theta Kappa '38, '39; International Relations
'38, '39; Y.M.C.A. '38, '39; Newman Club; Commercial Club, Vice-President '39.

"Where there's a will there's a way."

EDITH WATTS - - - - - Purvis
B.S.U. '38, '39; Y.W.C.A. '38, '39; Phi Theta
Kappa '38.

"Her fine airs are in admirable taste."

WILLIAM CHARLES WETHERBEE - - - - - Gulfport
Y.M.C.A. '38, '39; Wesley Foundation '38, '39.
"From his superior height, he views things with
a glad smile."

STEPHEN VAN ALLEN WHETSTONE - - - - - Biloxi
Phi Theta Kappa '38; Student Council '39; B.S.U.
'38, '39; Y.M.C.A. '38, '39; Annual Staff, Business
Manager '39; Best Boy Dancer '38, '39.

"BUDDY"

"He puts his soul into his dancing; may he be
a success."

EWELL FRAZIER WILKERSON - - - - - Ocean Springs
Phi Theta Kappa '38, '39; Agriculture Club;
Y.M.C.A. '38, '39; Wesley Foundation '38, '39.

"FRAZIER"

"Still pleased to learn, yet not proud to know."

JOHN WILLIAMS - - - - - Buford, Ga.
Football (lettered) '38, '39; Basketball '38, '39;
Baseball (lettered) '38, Captain '39; "P" Club.

"POODOO"

"Be a live wire and you won't be stepped on."

ROY VANCELEAVE WOODWARD - - - - - Gulfport
Y.M.C.A. '38, '39; Wesley Foundation '38, '39; Language Club; Tennis '38, '39; Annual Staff, Art
Editor '38.

"VAN"

"They never taste who always drink;
They always talk who never think."



SNAPS

These snaps were taken while the Sophomores were intermingling during their rest from the usual train of thoughts at "Perk"--studying.

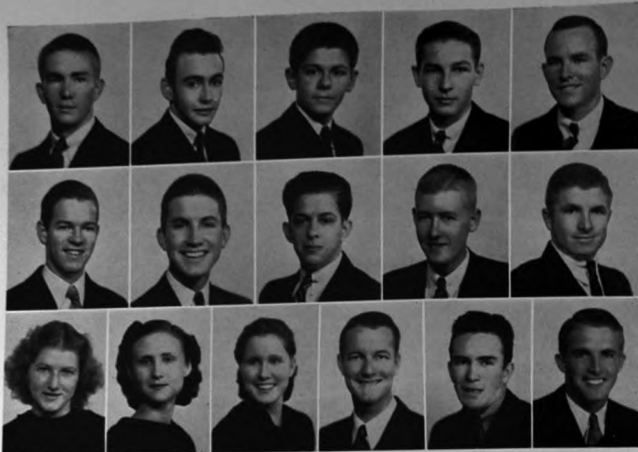
The FRESHMEN



*Thus with the rising of the sun
Was the noble task begun,
And soon throughout the ship-yard's bounds
Were heard the intermingled sounds
Of axes and of mallets, plied
With vigorous arms on every side.*

OFFICERS

WILLIAM GILLIS	- - - - -	President
CLAYTON WELLS	- - - - -	Vice-President
JAMES ESTES	- - - - -	Secretary-Treasurer
JOE THOMPSON	- - - - -	Student Council Representative



Gillis, Wells, Estes, Thompson, Adkinson.
Anders, Balthrope, Beall, Bellew, Blackwell.
Bogdahn, Bond, Broadus, Byrd, Carlin, Coffman.

The FRESHMAN Class

WILLIAM GILLIS - - - - Biloxi
International Relations; Y.M.C.A.; B.S.U.;
Country Club; President Freshman Class.

CLAYTON JOHN WELLS - - - - Biloxi
Dramatic Club, President '39; Y.M.C.A.;
Vice-President Freshman Class.

JAMES POWELL ESTES, JR. - - Gulfport
Y.M.C.A.; Commercial Club, Reporter; Band;
Secretary Freshman Class.

JOSEPH THOMPSON - - - - Gulfport
Student Council; Y.M.C.A.; "P" Club; Foot-
ball; Basketball; Track.

EWELL TRAVIS ADKINSON - - - Hurley
Agriculture Club.

WILLIAM JACKSON ANDERS - - Biloxi
Y.M.C.A.; Dramatic Club; Boxing (lettered);
Country Club; Wesley Foundation; "P" Club.

JAMES BALTHROPE - - - - Biloxi
Y.M.C.A.; Country Club; Annual Staff.

WILLIAM BEALL - - New Orleans, La.
Commercial Club; Tennis.

GLEN ALLEN BELLEW - - - - Saucier
Y.M.C.A.

NORRIS BLACKWELL - - - - Biloxi
Y.M.C.A.; Agriculture Club.

MABELLINE BOGDahn - - Pascagoula
Glee Club; Pep Squad Drum Major.

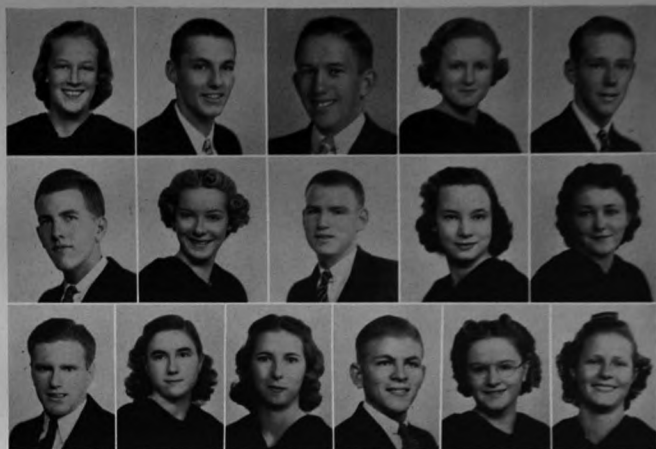
ZETTIE BOND - - - - Perkinston
Glee Club.

BONNYE BROADUS - - - - Perkinston

JAMES BYRD - - - - Gulfport
Dramatic Club; Wesley Foundation

WILLIAM CARLIN - - - - Bond

J. T. (DUNER) COFFMAN - Elkmont, Ark.
"P" Club; Football; Baseball; Basketball;
Y.M.C.A.



Colle, Collings, B. Collins, B. Collings, Cook.
Cross, Crowell, Cullen, Curren, Daniels.
F. Davis, L. Davis, N. Davis, W. Davis, De Metz, Dick.

KATHLEEN COLLE - - - Pascagoula
Y.W.C.A.; C.W.A.A. Treasurer; Wesley
Foundation.

BUFORD EDWARD COLLINGS, JR., Gulfport
Phi Theta Kappa; International Relations
Club; Y.M.C.A.; Glee Club; Quartet; New-
man Club; Track; Tennis.

BILL COLLINS - - - - Biloxi

EDITH COLLINS - - - - Saucier

WILLIAM COOK - - Corpus Christi, Texas
"Bill"
Y.M.C.A.; Agricultural Club.

WILLIAM BANGER CROSS - - Biloxi
Y.M.C.A.

MARTHA CROWELL - - - - Gulfport
Best Dressed Girl; Y.W.C.A.; Home Ec. Club.

EDWARD FREDRICK CULLEN - Gulfport
"Chicken"
Agricultural Club; International Relations
Club.

ULO A JUNE CURREN - - New Orleans, La.
Y.W.C.A.; Newman Club; Golf; Pep Squad;
C.W.A.A., Secretary.

JUNE DANIELS - - - - Biloxi
Y.W.C.A.; Home Ec.

FRANK ROY DAVIS - - - Ocean Springs
"Red"
Football.

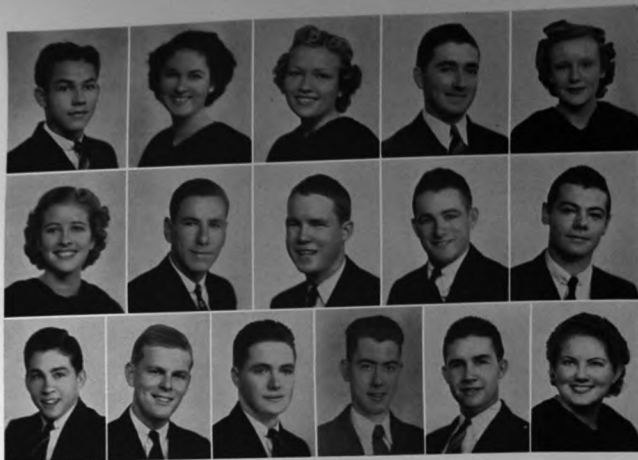
LOUISE DAVIS - - - - Ocean Springs
Commercial Club; B.S.U., Treasurer; Y.W.C.A.;
C.W.A.A.; Pep Squad.

NETTIE LEISE DAVIS - - - Biloxi
"Gay"
Y.W.C.A.; Golf Club.

WALTER DAVIS - - - - Magnolia
Agriculture Club; Y.M.C.A.

ROSE LOUISE DE METZ - - Pass Christian
"Miss De Metz"
International Relations Club; Newman Club;
Y.W.C.A.; Language Club; Phi Theta Kappa.

AUDREY DICK - - - - Biloxi
Wesley Foundation; "P" Club; Basketball,
(lettered); Track.



Doubleday, Downing, Drennan, Duncan, Easterling,
Eldridge, Fillingim, Freridge, George, Grimes,
Gallotte, Hague, Hamilton, Hartman, H. Hatten, M. Hatten.

The FRESHMAN Class

FRANK DOUBLEDAY - - - Port Limon,
Costa Rica, C. A.
Band; Orchestra; Drum Major, 37-38, 38-39.

ELVA DOWNING - - - - - Perkinston
Language Club; Dramatic Club.

ELOISE DRENNAN - - - - - Gulfport
"Ella"
Y.W.C.A.; Home Ec. Club.

EDWIN DUNCAN - - - - - Van Cleave

VERMELLE EASTERLING - - - Greenville
Language Club, Secretary; Pep Squad;
Band; Y.W.C.A.; Wesley Foundation.

SARA FRANCIS ELDRIDGE - - - Wiggins
Y.W.C.A.; C.W.A.A.; B.S.U. Treasurer; Com-
mercial Club; Golf Club; Pep Squad; Choral
Club.

ELMER FRANK FILLINGIM - Long Beach
"Spidutz"
"P" Club; Football, (lettered); Basketball,
(lettered); Baseball; Track.

RABON FRERIDGE - - - - -
Y.M.C.A.

JAMES B. GEORGE - - - Pascagoula
"J. B."
Football; Track.

JOHN WILLIS GRIMES - - - Gulfport
Y.M.C.A.; Wesley Foundation; Commercial
Club.

WILFRED GALLOTTE, JR. - - Biloxi
"Chooky"
Football; Baseball; Y.M.C.A.; Newman Club;
Country Club.

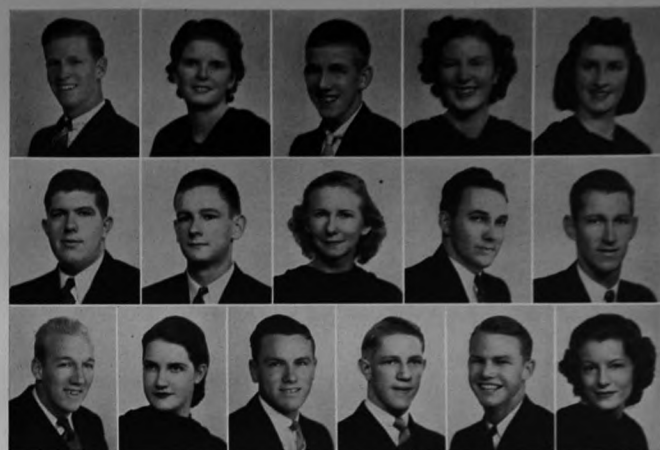
DOUGLAS HAGUE - - - - - Pascagoula
"Doug"
Y.M.C.A.

JULIAN HAMILTON - - - - - Wade

JOSEPH J. HARTMAN - - - - Biloxi
"J. J."
Y.M.C.A.

HOWARD HATTEN - - - - - Wiggins

MODEZ HATTEN - - - - - Wiggins



Hayden, Hickman, Hodge, Holland, Holley,
Hoyle, Hutto, James, H. Johnson, R. Johnston,
Jorgensen, Joullian, Kenneth, Kidd, Landrum, Lott.

JULIUS JOHN HAYDEN, JR., Pass Christian
"J. J."
Y.M.C.A.; Football.

TOXIE HICKMAN - - - - - Perkinston

JAMES ALEXANDER HODGE, JR., Long Beach
"Hog"
Band; Y. M. C. A.

SARA JOYCE HOLLAND - Camden, Ark.
"Red"
Country Club; Y.W.C.A.; Dramatic Club;
Pep Squad; Wesley Foundation; Commer-
cial Club.

MERCEDES HOLLEY - - - - - Gulfport
Band; Y.W.C.A.; Language Club.

DAVID CARTER HOYLE - - - Gulfport
International Relations Club; Y.M.C.A.; Com-
mercial Club; Annual Staff; Phi Theta Kap-
pa; State Exam. Bookkeeping '39.

ANDREW CLIFTON HUTTO, JR. - Gulfport
"Pluto"
Y.M.C.A.; Language Club.

HELEN JAMES - - - - - Gulfport
Y.W.C.A.; Language Club; B.S.U.; Bulldog
Growl; Library Reporter; Annual Staff;
Phi Theta Kappa; State Exam. Spanish 10.

HERMAN DEWITT JOHNSON - Wiggins
"Slim"

RUBY JOHNSTON - - - - - Pensacola, Fla.
Commercial Club; Basketball; Cheerleader;
Y.M.C.A.; Country Club; International Re-
lations Club; Baseball (lettered); "P" Club.

WILLIAM JORGENSEN - - - Chicago, Ill.
"Jergie"
Football; Boxing (lettered); "P" Club;
Baseball; Dramatic Club.

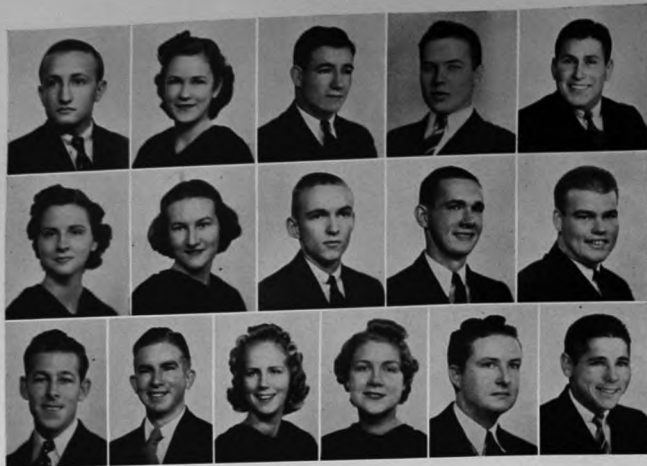
IRIS JOULLIAN - - - - - Biloxi
Pep Squad; Glee Club; B.S.U.; Y.W.C.A.

MELVIN KENNETH - - - - - Greenwood
Y.M.C.A.; Football (lettered); Tennis (let-
tered); "P" Club.

LUCIEN WILLIAM KIDD - Puerto Castilla,
Honduras, C. A.
"Kidd"
Y.M.C.A.; Track; Tennis; Band.

VAN OSWALD LANDRUM - - - Gulfport
"Dutch"
Bulldog Growl, Editor.

RUTHELIA LOTT - - - - - Nashville, Tenn.
Basketball (lettered); Cheerleader; Glee
Club; Pep Squad; Y.W.C.A.; Wesley Foun-
dation; "P" Club.



Lowery, Lyons, Malley, Mangin, Meaut.
Murrel, McCoy, McKee, McKoin, McMahan.
McNamee, Netherland, Norwood, Oliver, Parker, Pickich.

The FRESHMAN Class

DENNIS LOWERY - - - - Lyman
"Runt"
Y.M.C.A.; Boxing.

MATTIE LOU LYONS - - - Gulfport
"Batty Lou"
Y.W.C.A.; Band; Dramatic Club, Sec.; Commercial Club; Reporter Bulldog Growl.

ALVIN ELLIS MALLEY - - - Gulfport
"Malley"
Dramatic Club; Football (lettered); "P" Club.

ALBERT MANGIN, JR. - - - Biloxi
Tennis.

BEAUMONT JOSEPH MEAUT - - Biloxi
Football (lettered); "P" Club; Y.M.C.A.; Baseball; Newman Club.

MILLCENT MURREL - - - Crowley, La.
"Millie"
Y.W.C.A.; Language Club, Vice-Pres.; Newman Club; C.W.A.A.; Phi Theta Kappa.

SARA LOUISE MCCOY - - - Amite, La.
Pep Squad; Glee Club; Wesley Foundation; Y.W.C.A.

CARL REESE MCKEE, JR. - - Hazlehurst
Y.M.C.A.; Wesley Foundation; Track.

HENRY SUGG MCKOIN, JR. - Gallatin, Tenn.
"Tennessee"
Country Club; Y.M.C.A.; Wesley Foundation.

JOSEPH K. McMAHAN - - - Hattiesburg
Boxing (lettered); "P" Club; Y.M.C.A.

CHARLES DICKENS McNAMEE - Jackson
Glee Club; Band; Quartet; Orchestra; Y.M.C.A.; Wesley Foundation.

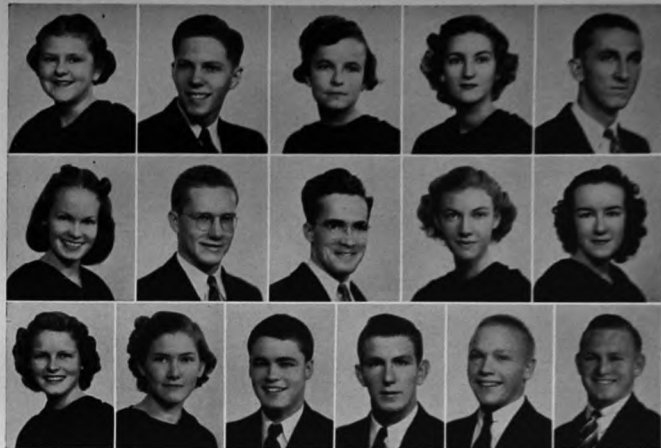
JAMES OLLIAN NETHERLAND - - Biloxi
"Ollie"
Country Club; Y.M.C.A.; Boxing, Mgr.; "P" Club; B.S.U.

ELLIE MAE NORWOOD - - - Bunkie, La.
"Punkie"
Circulator Mgr. Bulldog Growl; C.W.A.A. Reporter; Pep Squad; Basketball; Tennis, (lettered); "P" Club.

MARY CLAIR OLIVER - Terre Haute, Ind.
"Mom"
Glee Club; B.S.U.; Y.W.C.A.

CURTIS PARKER - - - - McHenry
Orchestra; Band; Glee Club.

SHANNON PAUL PICKICH - - - Biloxi
"Big Chookie"
Football (lettered); Boxing (lettered); "P" Club; Baseball; Newman Club.



Pollard, Rady, H. Ramsay, I. Ramsay, W. Ramsay.
Reeves, Rich, Rigby, Roberts, Robinson.
Rush, Russum, Ryland, Skelton, Sletten, Sprinkle.

MILDRED POLLARD - - - Gulfport
Language Club, Secretary; Wesley Foundation; Y.W.C.A.

LOUIS CHARLES RADY - - - Pensacola, Fla.
Phi Theta Kappa; Commercial Club; Newman Club; Y.M.C.A.

HAZEL RAMSAY - - - - Vancleave
Y.W.C.A.; International Relations Club; Band; Dramatic Club; B.S.U.

INEZ RAMSAY - - - - Ramsay Springs
Home Ec. Club, President; Y.W.C.A.; Annual Staff; Football Queen '38.

WYETH TRYBUE RAMSAY - - Vancleave
Glee Club; Y.M.C.A.; Dramatic Club; International Relations Club; Wesley Foundation.

VIRGINIA REEVES - - - - Gulfport
Band, Sec. and Treas.; Y.W.C.A.; Language Club; Wesley Foundation.

ROBERT LOUIS RICH - - - Chicago, Ill.
"Bob"
Agricultural Club; Y.M.C.A.; Boxing (lettered); "P" Club.

CLAUDE L. RIGBY - - - - Biloxi

MARY ANN ROBERTS - - - Gulfport
C.W.A.A.; Basketball; Track (lettered); "P" Club.

BEVERLY ROBINSON - - - Gulfport

DORIS RUSH - - - - - Laurel
Y.W.C.A.; Wesley Foundation; Pep Squad.

MILDRED RUSSUM - - - - Perkinston
Band; Glee Club; Y.W.C.A.

WARREN RYLAND - - - - Gulfport
Band.

JOSEPH FRANKLIN SKELTON - Pensacola, Florida
"Jody"
Commercial Club; Country Club; Basketball; Y.M.C.A.

GLEN EDWARD SLETTEN - - - Gulfport
"Slats"
Band; Orchestra; Y.M.C.A.

JAMES EARL SPRINKLE - - Pass Christian
"Jim"
Football; Y.M.C.A.



Stegall, Stringer, Taltavull, Taylor, Tucei.
Turcotte, Tyrone, Warne, Webb, West.
Whittington, Willie, Wison, Wise, Woodruff, Yon.

The FRESHMEN

JOSEPHINE STEGALL - - - Gulfport
Y.W.C.A.; B.S.U.; Glee Club; Pep Squad.

LONNIE JACKSON STRINGER, JR., Hatties-
burg

"L. J."

Agriculture Club; Football, Mgr.

MARY EDNA TALTAUVULL - - - Biloxi
"Skin"
Y.W.C.A.; Language Club.

JACK TAYLOR - - - Mobile, Ala.
Y.M.C.A.

VINCENT J. TUCEI, JR. - - - Biloxi

CECILE TURCOTTE - - - Waveland
"Dick"
Newman Club; Basketball; Track.

VIDA TYRONE - - - Lyman
Y.W.C.A.; Basketball (lettered); "P" Club.

AVA LEE WARNE - - - White River, Vermont
Y.W.C.A.; Home Ec. Club; Wesley Founda-
tion; Pep Squad.

JEFFERSON DYKES WEBB - - Chipley, Fla.
"Jeff"

International Relations Club; Country Club;
Y.M.C.A.; Football.

JOSIE WEST - - - Lyman
Y.W.C.A.; Wesley Foundation.

VERA WHITTINGTON - - - Ramsay Springs
Glee Club; C.W.A.A.; Y.W.C.A.

MYRTLE WILLIE - - - Livingston, La.
"Little Willie"
Home Ec. Club; C.W.A.A.; Wesley Founda-
tion; Y.W.C.A.

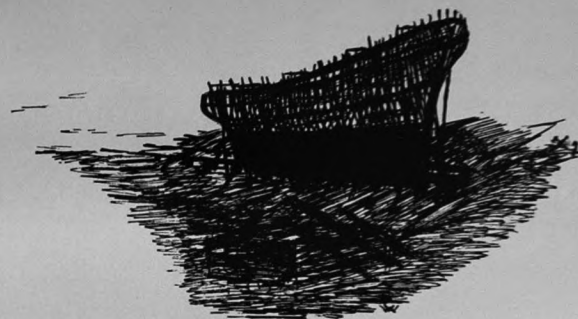
SAMUEL PERCY WISON - - - Gulfport
"Sam"
Band; Y.M.C.A.; Country Club; Wesley
Foundation.

TERRIL EDWARD WISE - - Pensacola, Fla.
Y.M.C.A.; Football (lettered); "P" Club;
International Relations Club; Wesley Founda-
tion; Track.

ELEANOR WOODRUFF - - - York, Ala.
"Ellen"
Home Ec. Club.

ERNESTINE YON - - - Pascagoula
"Stenie"
Y.W.C.A.; Wesley Foundation; Phi Theta
Kappa.

High School SENIORS



*Day by day the vessel grew,
With timbers fashioned strong and true,
Stemson and deelson and sternson knee
Till, framed with perfect symmetry,
A skeleton ship rose up to view!*

OFFICERS

GEORGE BUTLER - - - - - President

CHARLES DE METZ - - - - - Vice-President

MARGIE BATSON - - - - - Secretary-Treasurer

THURLOW WALKER - - - - - Student Council Representative

The HIGH SCHOOL SENIORS

GEORGE BUTLER, Progreso, Honduras, C. A.
President of Senior Class; Band; Orchestra;
Boxing (lettered); Y.M.C.A.
"He lives, loves, and labors freely."

CHARLES DE METZ - - - - Pass Christian
Y.M.C.A.; Newman Club; Senior Class Vice-
President; Class Reporter.
"None but himself can be his parallel."

WINIFRED BATSON - - - - Perkinston
"WINNIE"
Commercial Club; Y.W.C.A.
"Simple and sweet with a mind of her own."

THURLOW WALKER - - - - Perkinston
B.S.U.; "P" Club; Student Council; Secre-
tary Y.M.C.A.
"He is climbing a different road, but the
glory that attends success gives him
strength for his labor."

MARGIE BATSON - - - - Perkinston
Commercial Club; Y.W.C.A.; Secretary of
Senior Class.
"Declare she covers a multitude of thought
with one slow smile."

MARGARET BROADWATER - - Perkinston
Band.
"She has laughing eyes and the spirit of a
jolly good fellow."

CRYSTAL CAIN - - - - Perkinston
"CRYS"
Y.W.C.A.
"Trimmer and neater than anybody could
imagine."

JACK COOK - - - - Corpus Christi, Texas
"P" Club; Boxing (lettered).
"His hair is red, his eyes are blue,
He is sincere, his heart is true."

ALICE COOPER - - - - New Orleans, La.
"AL"
Pep Squad; Secretary Home Ec. Club; Dra-
matic Club; Orchestra; Y.W.C.A.; Annual
Staff, '39.
"Can't imagine whether she is really enam-
oured with doing things or is just insulting
the lazier ones."



THOMAS HOWELL - - - - Howison
"TOM"
Y.M.C.A.; Language Club.
"A more courteous gentleman could ne'er
be found."

FRANK MILLER - - - - Pensacola, Fla.
"BUG"
Dramatic Club; Boxing (lettered); "P" Club.
"A merry laugh doeth good like medicine."

JAMES PALENCIA - - - - Puerto Castille,
Honduras, C. A.
"JAIME"
Y.M.C.A.; Boxing (lettered).
"And he would argue, and argue, and argue."

JEAN PARKER - - - - Biloxi
"JEANNE"
Newman Club; Best Girl Dancer, '37-'38;
Home Ec. Club; Y.W.C.A.; Pep Squad; Dra-
matic Club; Annual Staff, '39.
"A perfect dancer and a perfect friend
with a gift of gab."

HOWARD POLLOCK - - - - New Orleans, La.
"LIL' JEEP"
Boxing (lettered); Track (lettered); "P"
Club; President of Newman Club; Glee
Club; Cheerleader; Y.M.C.A.
"The poet at sunset sees,
Fair maidens under sycamore trees."

PAT REEVES - - - - Gulfport
Football (lettered); Baseball; "P" Club.
"A small gun of large caliber."

AIMEE ROS - - - - Pascagoula
Y.W.C.A.; Home Ec. Club; Treasurer of
Dramatic Club; Newman Club.
"How easy it is to become enamoured by
lustrous brown eyes."

JOHN SIMMONS - - - - New Orleans, La.
"JOHNNY"
Boxing (lettered); Baseball Manager, '37; "P"
Club; B.S.U.; Y.M.C.A.
"Smiles are the flowers of God's goodness."

ALICE WORTHINGTON - - - - Greenville
Y.W.C.A.; Home Ec. Club Treasurer; Coun-
try Club; Pep Squad.
"A leading lady with everybody following."



HIGH SCHOOL JUNIORS

First Row:

LA FARE CLAUNCHE

HELEN BOND

MYRNA REE JOHNSON

FLOYE BROADUS

HELEN JORDAN

LA FERN PARKER

MAYDELL SWITZER

MARY ANNE PASSMORE

BERTHA BOND

Second Row:

IRLEAN LADNIER

MARGARET REDMAN

MITTIE WALNE CAIN

TILLA BEVERLY

Third Row:

MISS DALIER

ROBERT THOMPSON

NORVAL DENSON

GLEN KEMP

MARION RISH

TERRELL LOPER

BENNIE RAY BRELAND

WALTER LINDSAY

DIMPLES SMITH

CLTIETT KEMP

WILLIAM WHITTEN

BETTY WIGHT

HAROLD WHITE

Fourth Row:

DOUSSAN RANDO

HILARY HORNE

MILLARD BOND

CECIL PATTERSON



HIGH SCHOOL SOPHOMORES

First Row:

LOIS BRELAND

JEAN PRICE

OPAL CLAYTON

MARY KATE HICKMAN

WILMA PROFFITT

HARRY CARLIN

DOROTHY DANTZLER

Second Row:

MARJORY SHEPARD

NETTIE SAPP

VIVIAN RAY CHAVERS

BETTY THOMPSON

VIRGINIA HOWELL

Third Row:

GEORGE DENSON

JOHN ROBERSON

BOYCE BRELAND

MILLARD BOND

MAXIE FERRERA

LEROY WEEKS

CLAUDE CHANDLER

Fourth Row:

FRANK RUSSUM

BEMIS BAILEY

SHELTON BROADUS

SAM DANIEL



HIGH SCHOOL FRESHMEN

First Row:

MR. STANLEY BEERS
MARY IRLEAN SAPP
BEATRICE SIMMONS
BEATRICE BOND
LAYETTE MURPHY
VIVIAN SHELDON
FAY PRICE
VERA LEE WADE
BEATRICE JONES

Second Row:

MARY ELAINE BATSON
WILMA CHANDLER
ORENE DENSON
DORIS CHANDLER

EDNA FORE

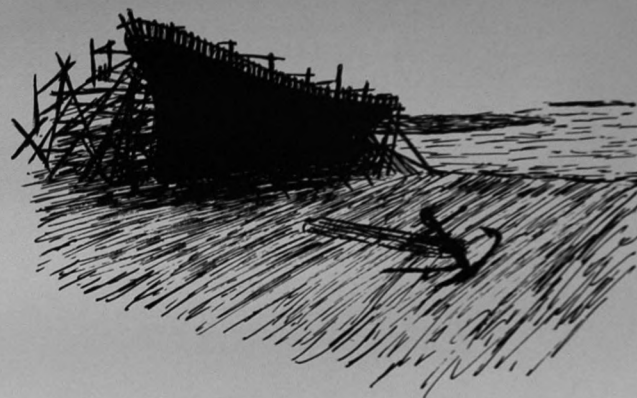
BERTHA MAE COBB
OPAL O'NEAL
BERNICE BRELAND
ESSIE BEVERLY
VIRGINIA ANNE LOTT

Third Row:

W. L. ATCHINSON
ERIC BATTY
BILL AUER
HENRY JORDAN
CLEO BRELAND
HOWARD PARKER
GLEN ROY RISH
PERCY O'NEAL

Fourth Row:

BILL STOCKARD
CLIFTON NOLL
CECIL VANCE
DAVID COOPER
WENTZ BATSON
GEORGE SEYMOUR
JIMMY LOTT
AUBREY McQUEEN
ELMER LEE HAYES
BERNARD GUARDIA
WALTER SCARBOROUGH
ELVIS BRELAND



*Till after many a week, at length,
Wonderful for form and strength,
Sublime in its enormous bulk,
Loomed aloft the shadowy hulk!*

The

FEATURES

EXPLANATION OF FEATURES

No campus is complete without a queen to reign over it. Therefore the honor of Campus Queen is annually bestowed on the girl elected from the beauty contingent of the school. The Queen and her court, which consists of four other beauties, is elected by the student body and represents the school in beauty and popularity.

* * * * *

Every year when we have the Homecoming, the football boys are given recognition to the extent of having a Queen and Court elected by the students. This Queen and Court are the representatives of the students in welcoming the football boys. They preside over the Homecoming and act as hostesses at the football game.

* * * * *

At a time when the students feel they know each other, an election of the possessors of wit, intellect, looks, actions, etc., is held to determine Who's Who. On the following pages you will get a broad introduction of us all.

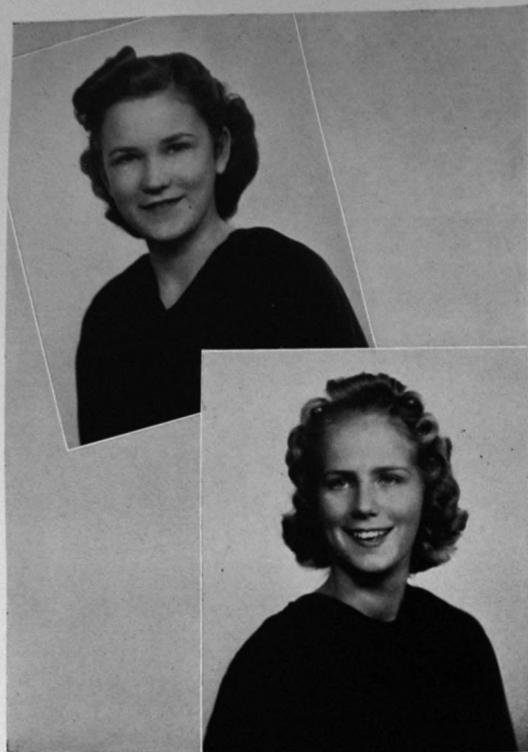
* * * * *

With just a bit of foolishness and fun added we give you "Perk" as we see it day after day. These snaps were taken by the students, of the students, and for the students from the beginning of school through initiation, football, recreation, and all times, to the last day.



INEZ RAMSAY

CAMPUS QUEEN



MATTIE LOU LYONS
ELLIE MAE NORWOOD

B

E

A

U

DORIS RUSH
"SALLY" JANE



T

I

E

S



"SALLY" JANÉ

HOMECOMING QUEEN



DOROTHY COVINGTON
INEZ RAMSAY
MATTIE LOU LYONS
WILMA PROFFITT

and the COURT . . .



"Sally" Jane—Prettiest Girl, Most Versatile Girl, "Miss Perkinson"; "Duner" Coffman—Best Looking Boy; "Mag" Bogdahn—Wittiest Girl, Cutest Girl; Bill Jorgenson—Wittiest Boy; C. T. Manley—Most Popular Boy; "Sally" Core—Most Popular Girl, Best Girl Athlete, Friendliest Student, Best Girl Sport; Stephen Whetstone—Best Boy Dancer; Ellie Mae Norwood—Best Girl Dancer; Martha Crowell—Best Dressed Girl; Tony "Ed" Colmer—Best Dressed Boy; Helen James—Most Courteous Girl; Tom Howell—Most Courteous Boy.

W H O ' S

"Chris" Saucier—Girl with Most Winning Smile; Shannon Pickich—Boy with Most Winning Smile; Beatrice Simmons, Frank Russum—Cutest Couple; Evelyn McQuagge—Most Sophisticated Sophomore; Mercedes Holley—Freshest Freshman; Dr. Brasfield—Most Influential Teacher, Teacher Most Interested in Students, Best Liked Teacher; John Norwood—Best Boy Athlete; John Williams—Most Versatile Boy; Inez Ramsay—"Miss Home Ec."; "Stumpy" Hodges—Best Boy Sport; Angus McBryde—Student Most Likely to Succeed.

W H O . .

SNAP SHOTS

1. Does it work?????
2. Coiffures a la "Perk".
3. School spirit.
4. This can't be activity period--!!
5. Fun! Fun! More Fun!
6. Our three red-heads.
7. Not yet---
8. Romeo and Juliets.
9. Oops, my dears.
10. Study-amus.
11. Whatcha doin'?
12. Some pipples' children.
13. Posin'.
14. Ah--but beauty is only skin-deep.
15. The House of David and fans.
16. A wild party--two Slummonians present.
17. P-e-R-k-I-n-S-t-O-N.
18. Bend over, Freshie.
19. Acrobatty.
20. That's why they call me shine.
21. Comin' atcha.
22. Lil' Sir Echo.
23. The Cam-pusses.
24. Sock-amus.
25. THAT'S THE QUADRANGLE!!!
26. "Abandon all hope, ye who enter here."





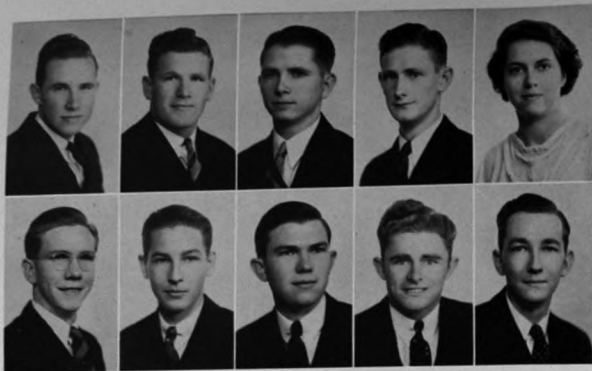
SNAPS

1. So this is "Perk"!
2. Our bite wasn't as big as our bark.
3. Caught in the act.
4. "Perk' sassiety."
5. G-mens.
6. Yum, yum, where were we?
7. She dropped it-- She dropped it.
8. Your guess is as good as mine.
9. OFF---the campus.
10. 'S'matter, Freshman, sorta bare?
11. The crowd roars.
12. Don't we got fun, tho'??
13. Napoleon after his Waterloo.
14. Those three Gulf-port cons'.
15. Alone---Trackin' on down.
16. Ain't we-uns cute, tho'?
17. Tongue-waggers.



*She starts,--she moves,--she seems to feel
The thrill of life along her keel,
And spurning with her foot the ground,
With one exulting, joyous bound
She leaps into the ocean's arms!*

STUDENT ACTIVITIES



HAL BUCHANNAN - - - - - President
CRAWFORD DEES - - - - - Vice-President
HARBERT DALE - - - - - Secretary-Treasurer

FIRST ROW: Hal Buchanan, Crawford Dees, Harbert Dale, John Brown, Esta Lee Lott.
SECOND ROW: Angus McBryde, Joe Thompson, Paul Graham, Thurlow Walker, Stephen Whetstone.

STUDENT COUNCIL

The Student Council is the most democratic organization on the campus and is representative of all the students. The council consists of a President, Vice-President, and Secretary-Treasurer elected from the student body at large. Special groups which elect council members are: College Sophomores, College Freshmen, the High School, Y.M.C.A., Y.W.C.A., and Phi Theta Kappa.

The functions of the Student Council are: To arrange wholesome and entertaining recreational and social activities for the students, to attend to all student business that pertains to the student body as a whole, to present helpful student suggestions to the faculty and administration, and to act in advisory capacity to the students.



PERKOLATOR STAFF

Sally Jane, Editor-in-Chief; Stephen Whetstone, Business Manager; David Hoyle, Asst. Business Manager; Herschel Nash, Sports Editor; L. P. Ingram, Sponsor.

Van Woodward, Art Editor; Jimmy Balthrope, Asst't. Art Editor; Elise Netherland, Asst. Editor-in-Chief; Inez Ramsay, Freshman Reporter; Alice Cooper, High School Reporter.

Helen James, Organization Reporter; Esta Lee Lott, Snap Shot Collector; Theresa Hubert, Sophomore Reporter; Jean Parker, Typist.

"Staff's race well run,
Staff's work well done,
Staff's crown well won--(we hope)
Now comes rest."



FIRST ROW: Angus McBryde, Vice-President; Evelyn McQuagge, Secretary; "Sally" Jane, Treasurer; Paul Graham, Student Council Representative; Dr. T. W. Brasfield, Sponsor; Faye Allen, Evelyn Black, Randle Dedeaux, Ralph Driskell.

SECOND ROW: Ruth McClure, David Valverde, Stephen Whetstone, Frazier Wilkerson, Buford Collings, Louise Davis, Nettie Davis, Rose Louise DeMetz, Bertran Driskell.

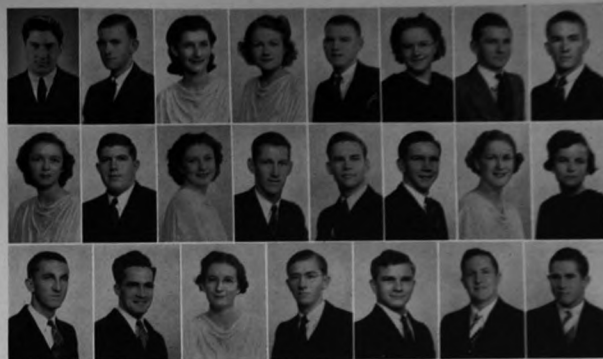
THIRD ROW: James Estes, David Hoyle, Clifton Hutto, Helen James, Mattie Lou Lyons, Millicent Murrel, Charles Rady, Ernestine Yon.

* * * * *

PHI THETA KAPPA

The Phi Theta Kappa is the honorary society of the Junior College. Our chapter, the Gamma Nu, is a member of the National Society of the Phi Theta Kappa.

In order to become a member of this organization, a student must rank within the upper ten percent, scholastically, of the total college enrollment; he must also maintain at least a B average.



FIRST ROW: Peter Pavlov, President; Randall Dedeaux, Vice-President; Frona Sprinkle, Secretary; "Dot" Covington, Edward Cullen, Rose Louise DeMetz, Robert Gernon, Buddy Gillis.

SECOND ROW: Mildred Gray, David Hoyle, "Sally" Jane, Ruby Johnson, Charles Littlepage, Angus McBryde, Evelyn McQuagge, Hazel Ramsay.

THIRD ROW: Wyeth Ramsay, Claude Rigby, Virginia Scarborough, Earl Taylor, David Valverde, Jefferson Webb, Terrel Wise.

* * * * *

INTERNATIONAL RELATIONS CLUB

The International Relations Club, a national organization established throughout the colleges and high schools of America, is made possible through the endowment of that great American benefactor and promoter of peace, Andrew Carnegie.

The club set forth to accomplish various tasks. First, auxiliary International Relations Clubs were organized in several high schools in this section of the state, and later the club had as its guest, a speaker of national recognition who gave a very enlightening talk on the conditions of various countries. The club was represented by three members at the First Conference of International Relations Clubs of Mississippi.

With Professor D. D. O'Neal as sponsor and the membership increased from twelve to thirty members, the club has shown remarkable progress, and we feel that we have been rewarded for our untiring zeal and effort.



FIRST ROW: Ernestine Yon, Doris Rush, Kathleen Colle, Jewel Williams, Vice-President; Mildred Pollard, Ava Lee Warne, Virginia Reeves, Joyce Holland, Vernel Easterling.
SECOND ROW: Sara Louise McCoy, Josie West, Sara House, Douglas Hague, Willis Grimes, James Byrd.
THIRD ROW: Frazier Wilkerson, Van Woodward, Earl Taylor, Carl McKee, Mrs. Rose McElroy, Harry Goza, John Williams, Secretary-Treasurer; Richard Harrison, William Wetherbee.

* * * * *

WESLEY FOUNDATION

The Wesley Foundation is a religious club organized as a connecting link between the Methodist students and the church. Its purpose is to promote spiritual development and maintain fellowship among the students. It serves as a means for the exchange of Christian ideas and ideals, and strives to increase moral education among its members.

The organization had its beginning in the school year of 1937 and 1938 under the guidance of Reverend Ridgeway, Pastor of the Wiggins Methodist Church. Weekly meetings are held at 6:00 o'clock p.m., Sunday evening. The third Sunday of every month a joint meeting is held with Epworth League of the Wiggins Methodist Church.



FIRST ROW: Louise Davis, Helen James, Elise Netherland, Evelyn McQuagge, Sara Francis Eldridge, Dorothy Covington.
SECOND ROW: Reverend Campbell, Stephen Whetstone, Lois Blackwell, Mildred Rustin, Virginia Scarborough, Helen Allen, Hazel Ramsay.
THIRD ROW: "Johnny" Simmons, Josephine Stegall, Iris Joulilian, Ruth McClure, President; Mary Claire Oliver.
FOURTH ROW: Thurlow Walker, "Billy" Lee, Monroe Smith, Paul Graham, Walter Smith.

* * * * *

BAPTIST STUDENT UNION

The Baptist Student Union, which was organized in the session of 1937-38, acts as a connecting link between the college and the local church. Membership in any Baptist organization entitles the student to be a member of the B. S. U.

Among the activities that the organization has sponsored this year have been the bringing of several guest speakers to the campus and sending five delegates to the All-Southern Baptist Student Conference held in Memphis, Tennessee.



FIRST ROW: Charles McNamee, Hal Buchanan, Houstin Hudgins, James Estes, David Hoyle, Richard Harrison, Jimmy Balthrope, Earl Taylor, Angus McBryde.
 SECOND ROW: Tom Howell, Prof. Gregory, Willis Grimes, Jim Kelly, Henry Davis, Clifton Hutto, David Valverde, Van Woodward, Stephen Whetstone, Walter Davis.
 THIRD ROW: Frazier Wilkerson, Ray Dubisson, Buford Collins, Carl McKee, Charles Littlepage, Billy Lee, Ralph Driskell, John Brown.
 FOURTH ROW: Harbert Dale, Thurlow Walker, Bill Cook, Wyeth Ramsay, Harry Goza, William Wetherbee, Sardon Roberts, Norris Blackwell, Walter Abel, Billy Swanzy, Hilary Hengen, Sam Wilson.

* * * * *

Y. M. C. A.

Is a union of students and faculty members for the following purposes:

To lead students to faith in God through Christ.

To lead them into membership and service in the Christian church.

To promote their growth in Christian faith and character, especially through the study of the Bible and prayer.

To influence them to devote themselves in united effort with all Christians to making the will of Christ effective in human society, and to extend the Kingdom of God throughout the world.



FIRST ROW (sitting): Ava Lee Warne, Lorraine Patterson, Ulos Curren, Rose Louise DeMetz, Mildred Pollard, Virginia Reeves, Jewel Williams, Beatrice Simmons.
 SECOND ROW (sitting): Joyce Holland, Vermelle Easterling, Gwendolyn Carpenter, Marguerite Colle, Emma Lou Stokoe, Hazel Ramsay.
 THIRD ROW: Evelyn McQuagge, Dot Covington, Sara Louise McCoy, Iris Joullian, Alice Worthington, Mary Helen Scott, Louise Davis, Juanita Jones, Vera Whittington, Mattie Lou Lyons, Sara Francis Eldridge, Miss Haney, Sponsor; Inez Ramsay.
 FOURTH ROW: Aimee Ros, Kathleen Colle, Doris Rush, Mildred Rustin, Helen Allen.
 FIFTH ROW: Margie Shepard, Sally Jane, "Gytchie" Netherland, Ruthelia Lott, Ernestine Yon, Helen James.
 SIXTH ROW: Josephine Steagall, Edith Collins, Nettie Davis, Lois Blackwell, Virginia Scarborough.
 SEVENTH ROW: Millicent Murrell, Myrtle Willie, Alice Cooper, Jean Parker, Mary Claire Oliver, Ruth McClure, Crystal Cain.
 EIGHTH ROW: Sally Core, Christine Saucier, Theresa Hubert, Betty Thompson, Louise Roberts.

* * * * *

Y. W. C. A.

As members of the Y. W. C. A., we shall strive to dedicate--

Our souls to God;

Our service to our fellow-beings;

Our minds and our bodies to higher standards through worthwhile activities.



ELISE NETHERLAND - - - - - President
 EVELYN BLACK - - - - - Vice-President
 LOUISE ROBERTS - - - - - Secretary
 THERESA HUBERT - - - - - Treasurer
 FRONA SPRINKLE - - - - - Reporter
 SALLY CORE - - - - - Inspiration

GIRLS' "P" CLUB

The purpose of the Girls' "P" Club is to promote sportsmanship and to create higher morals and better characters in the girls on our campus.

A girl has to play at least 24 quarters of intercollegiate basketball or make either the tennis or track team before she qualifies for membership in the "P" Club.



FIRST ROW: Pat Reeves, Shannon Pickich, Solon Etheridge, James Forte, Beaumont Meaut, Bill Blakely, Alvin Malley,
 SECOND ROW: Howard Pollock, Melvin Kenneth, Jack Cook, Terrel Wise, Elmer Fillingim, Cliett Kemp.
 THIRD ROW: Johnny Simmons, Thurlow Walker, Hal Buchanan, Joe Thompson, Herschel Nash, Robert Boyd.
 FOURTH ROW: Dr. Brasfield, C. T. Manley, Hilary Horne, "Duner" Coffman, Victor Royal, E. O. Cunningham, John Williams, President; Coach Rexinger.

* * * * *

BOYS' "P" CLUB

Membership in the "P" Club is one of the greatest honors on the campus. Only those who have won an athletic letter are eligible for membership, and the club is largely representative of the more popular boys on the campus.

The "P" Club was established as an athletic organization, but it prides itself in being one of the most progressive bodies on the hill.

The aim of the "P" Club is to build character and create an air of good fellowship and sportsmanship on the campus. It is active the year round. Some of its activities include an annual "P" Club dance, several picnics, and various other entertainments.

The COMMERCIAL CLUB



OFFICERS

MARGUERITE COLLE, President
DAVID VALVERDE, Vice-President
GWENDOLYN CARPENTER, Sec'y
JAMES ESTES, Reporter
"BILL" REID, Treasurer
No Picture

The Commercial Club is an organization composed of high school and college students studying commercial work. Its purpose is to provide recreation for the members, and to supplement the curriculum of the school in offering lectures which familiarize students with the present business problems connected with accountants, stenographers, secretaries, and typists.

Subjects discussed in the club meetings this year include stocks and bonds, banking, corporations, partnerships, and other phases of business relationships.

The outstanding activity of the club for the year was that of decorating the stage for the regular weekly Chapel assembly.

The honor students in Commercial work are to be recognized as having achieved more than is required for graduate work. They have been excellent students and we look forward to these having much success in future years with the attention that has been given them by our commercial teachers, Miss Ina Mae Hart and Mr. James Baulch.

HONOR STUDENTS

Standing—

MARGUERITE COLLE, Assistant
DAVID HOYLE, Best Accountant
DOROTHY COVINGTON, Commercial Law and Secretarial Science

Sitting—

LILLIE PROCTOR, Best Shorthand Student
WINIFRED BATSON, Best Typist



FIRST ROW: Miss Ina Mae Hart, Richard Harrison, Helen Cook, James Estes, Emma Lou Stokoe, Marguerite Colle, Gwendolyn Carpenter, Sally Jane, Willis Grimes, Professor Baulch.

SECOND ROW: Winifred Batson, "Bill" Beal, Oattie Reeves, Louise Davis, Margie Batson, David Valverde, Mattie Lou Lyons, "Joe" Skelton, Dorothy Covington.

THIRD ROW: Sara Francis Eldridge, Charles Rady, Mary Helen Scott, Ruby Johnston, "Bill" Reid.

FOURTH ROW: James Smith, David Hoyle, Lois Blackwell, Curtis Parker.



FIRST ROW: Inez Ramsay, President; Wilma Proffitt, Vice-President; Alice Cooper, Secretary; Alice Worthington, Treasurer; Edith Collins.
 SECOND ROW: Sally Core, Eloise Drennan, Esta Lee Lott, Aimee Ros, Margie Shepard.
 THIRD ROW: Beatrice Simmons, Ava Lee Warne, Myrtle Willie, Eleanor Woodruff.
 NO PICTURE: Miss Mary Eleanor Johnston, Sponsor; Theresa Hubert.

* * * * *

HOME ECONOMICS CLUB

Our aim is to develop appreciation for home economics in home and social life. For example, we have programs on promoting good manners in the home as well as in social life, and on overcoming problems in the home and society.



FIRST ROW: Emery O'Neal, L. J. Stringer, Ralph Driskell, Jake Shaw, "Bob" Rich, Edward Cullen, "Bill" Cook.
 SECOND ROW: James Kelly, John Blake, Norris Blackwell, Clifford Murphy, Walter Davis, Harbert Dale.
 THIRD ROW: Prof. Parsons, Bertram Driskell, Travis Atkinson, Julian Hamilton, Evert Bond, "Boots" Graham, Horace Diamond.
 FOURTH ROW: Frazier Wilkerson, Omar Murphy, Sardin Roberts, Billy Lipscomb, Edwin Duncan, John B. Brown, Henry Davis.
 FIFTH ROW: Dent O'Neil, E. O. Cunningham, Monroe Smith, Harry Goza.

* * * * *

AGRICULTURAL CLUB

The purpose of the Agricultural organization is to develop competent, aggressive, agricultural leadership, and to enable the students to select intelligently the agricultural occupation they should take in life. As co-operative-ness is greatly needed in agricultural work, it is a purpose of this club to create and encourage co-operative efforts among the agricultural students. The purpose of the club is also to promote and improve scholarships among the agricultural students and to encourage recreational activities among them.



FIRST ROW: Clayton Wells, President; Inez Ramsay, Vice-President; Mattie Lou Lyons, Secretary; Aimee Ros, Treasurer; Miss Mary Eleanor Johnston, Jack Anders, Hal Buchannan, James Byrd, Alice Cooper.

SECOND ROW: Dot Covington, Elva Downing, Eloise Drennon, Sara Frances Eldridge, Joyce Holland, "Bill" Jorgenson, Iris Joullian, Charles Littlepage, Alvin Malley.

THIRD ROW: Frank Miller, Jean Parker, Hazel Ramsay, Wyeth Ramsay, Victor Royal, Josephine Steagall, John Williams, Alice Worthington.

D R A M A T I C C L U B . . .

School drama, which yearly assumes a greater importance in the curriculum, should be considered as necessary to character-education and personality development as is any other academic subject. The development of the powers of portrayal benefits the individual because innate creative instincts and pent-up energies are provided with an outlet through pastime.

In addition to benefiting the individual, school drama, by raising the standards of the theater-going public, benefits society. The public learns to appreciate better productions, and eventually, to demand them. It is for those reasons, therefore, that the Dramatic Club was organized and developed: for enjoyment and benefit to participants and public.

During the year 1938-39, the club presented one three-act play that was hailed as the school's best--"Spring Fever"; and the Little Theater Contest play, "The High Heart."

"SPRING FEVER"

Characters

Mrs Spangler	- - - - -	JEAN PARKER
Ed Burns	- - - - -	ROWLAND BREWTON
Vic Lewis	- - - - -	JACK ANDERS
Howard Brandt	- - - - -	JOHN WILLIAMS
Lou Herron	- - - - -	HAZEL RAMSAY
Anne Purcell	- - - - -	LORRAINE PATTERSON
Vivian George	- - - - -	MATTIE LOU LYONS
Professor Bean	- - - - -	VIC ROYAL
Doctor Dixon	- - - - -	ALVIN MALLEY
Mrs. Purcell	- - - - -	ELVA DOWNING
Mr. Purcell	- - - - -	BILL JORGENSEN
Howard's Aunt Maude	- - - - -	JOYCE HOLLAND

* * * * *

Mrs. Spangler's boarding house is more frenzied than usual on the day before the Commencement exercises at Brookfield College. Spring fever is bad enough at any time, but when it hits a college town, it's devastating.

Reading from left to right:

STANDING: Brewton, Lyons, Downing, Malley, Parker, Royal.
 KNEELING: Jorgensen, Anders.
 LYING: Patterson.
 SITTING: Ramsay, Williams, Holland.



The G L E E C L U B . . .



FIRST ROW: Vera Whittington, "Mag" Bogdahn, Evelyn McQuagge, Uloa Curren, Helen Allen, Josephine Steagall, Inez Rohrer, Lois Blackwell, Edith Collins, Mary Claire Oliver, Nettie Sapp, Zettie Bond, Mary Ann Passmore, Emma Lou Stokoe, Miss Elizabeth Archer Davis.

SECOND ROW: Mildred Russum, President; Professor Stanley Beers, Howard Pollock, Millard Bond, "Bob" McNamee, Buford Collings, Douglas Hague, Charles McNamee, Business Manager; C. A. Carrier, Huston Hudgins, Mary Helen Scott.

Under the able direction of Miss Elizabeth Archer Davis, the Glee Club, a very active organization of the campus has had a splendid and eventful year. Getting an early start last fall the club prepared and presented an extremely difficult program, Handel's Messiah, with Dr. H. W. Stopher as guest conductor.

The club made many trips to numerous parts of the state, and in each instance was readily welcomed and joyously acclaimed for its excellent performances.

A considerable number of the members graduate this year, but are due to leave with wider variety of music lore than that with which they entered.

GIRLS' SEXTETTE

Emma Lou Stokoe, Mildred Russum, Evelyn McQuagge, Lois Blackwell, Mary Helen Scott, Zettie Bond, Miss Elizabeth Archer Davis, Accompanist.

BOYS' QUARTETTE

Millard Bond, Howard Pollock, Buford Collings, Charles McNamee.





FIRST ROW: Glen Sletten, Librarian; Mildred Russum, Charles McNamee, President; Zettie Bond, Townsend Gifford, "Bill" Collins, Ray Dubisson, George Butler, "Bob" McNamee.
 CENTER ROW: Albert Mangin, Emily Marie Stapp, LeRoy Weeks, Jr., Frank Russum, Richard Harrison, Theresa Blackburn, Marjorie Shepard, Jewel Williams, Huston Hudgins, Glen Kemp.
 BACK ROW: Sally Jane, "Bill" Newsom, James Hodge, Margaret Broadwater, Ned Batson, Professor Stanley Beers, James Estes, "Sam" Wilson, Rivers Singleton, Hazel Ramsay, Elva Downing, Mattie Lou Lyons, Clayton Lehman, Warren Lasserre, J. J. Hartman, Wilma Proffitt.

BAND

The band, under the able direction of Stanley C. Beers of Pine Bluff, Arkansas, has made wonderful improvements since his coming at the beginning of last session. It now consists of about thirty-five members, comprising a well-balanced band, which includes double bass and Tympanies.

Each year the band provides pep music and colorful formations at the football games at home and usually accompanies the football team on at least two occasions.

Band members will remember the wonderful time on the Gulf Coast as guests of the Gulfport Band in a joint concert followed by a dance to the music of orchestras from the two groups.

At the Junior College Band Contest held this year in Jackson, April 8, the band placed third in total number of points and third in concert playing. J. J. Hartmann placed third in trombone solo, "Sam" Wilson first in drum solo, Brass Sextet third, Clarinet Quintet first, and Drum Ensemble first. This is the best showing the band has ever done, placing in every event entered and returning with two beautiful cups and a medal.



FIRST ROW: Frank Doubleday, Alto Sax; Glen Sletten, Tenor Sax; Charles McNamee, Alto Sax; Ned Batson, Baritone Sax; Gloria Straub, Guitar.
 SECOND ROW: "Bob" McNamee, Trumpet; George Butler, Trumpet; J. J. Hartmann, Trombone; Clayton Lehman, Bass Horn.
 THIRD ROW: Rivers Singleton, Drums.
 Pianist—Curtis Parker.
 Vocalist—Alice Cooper.
 Vibra Harp and Trombone—Prof. Stanley Beers.

ORCHESTRA

Two years ago the same group was met with the problem of upholding a reputation built up and maintained through the years by really fine orchestras. With "Prof." Beers as the only man of experience, swing soon found its way through the men of the musical art and now in the latter part of its second year together, "Prof." with his vibra-harp against a background of deep harmony and colorful rhythm provides music, sweet and hot or soft and dreamy, "As You Like It." "Perk" has found these dances to be a most entertaining means of recreation and the most enjoyed of all student activities.



FIRST ROW: Theresa Hubert, President; Christine Saucier, Vice-President; Uloa Curren, Secretary; Miss Dalier, Sponsor; Kathleen Colle, Treasurer.
 SECOND ROW: Elise Netherland, Counselor; Louise Davis, Sara Francis Eldridge, Ruthelia Lott, Millicent Murrel.
 THIRD ROW: Ellie Mae Norwood, Mary Ann Roberts, Frona Sprinkle, Vera Whittington, Myrtle Willie.

* * * * *

C. W. A. A.

The College Women's Athletic Association is an organization that was organized at Perkinson Junior College in 1938. Miss Elton Dalier is the Sponsor.

The aim of the organization is to promote interest in inter-class athletics and sports, and to provide activities for recreation during leisure time such as hiking, tennis, and other individual activities, to improve the health of the student and to promote sportsmanship among students on and off the field.



FIRST ROW: Jimmie Balthrope, Sally Core, Uloa Curren, Nettie Davis, Sara Frances Eldridge.
 SECOND ROW: "Buddy" Gillis, Joyce Holland, Ollian Netherland, "Glen" Sletten, Mary Edna Taltavull.
 THIRD ROW: "Jeff" Webb, Sam Wilson, Alice Worthington, L. P. Ingram, Sponsor.

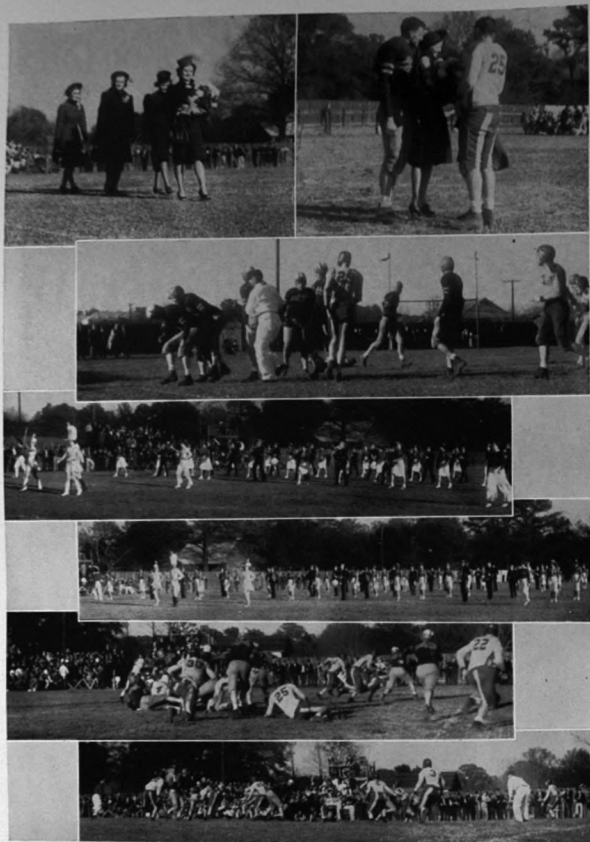
* * * * *

COUNTRY CLUB

The Country Club is an organization of students on the campus, who are interested in developing their skill in golf.

The club has had as its purpose this year the improvement of the fairways and greens. Due to the efforts of the members this purpose has been realized. Three holes, useless at the beginning of the year, were put into playing condition by early spring.

Notable progress has been made though the activities of the club have been impaired by the loss of two club presidents during the year.



FOOTBALL SNAPS

These shots were snapped at the Homecoming game held at Perkinson in November. Top row shows the Queen and her Court as they enter on the field before the game, also the presenting of the bouquet to Poplarville. Second and last rows show the teams in opposition. In the third and fourth rows we have the band marching during the half.



*Sail forth into the sea, O ship!
Through wind and wave, right onward steer!
The moistened eye, the trembling lip,
Are not the signs of doubt or fear.
Sail forth into the sea of life.*

The ATHLETICS



FOOTBALL..



A. I. REXINGER
Basketball
Football
Baseball

DR. BRASFIELD
Asst.
Football
Basketball

L. R. WEEKS
Boxing
Tennis

D. D. O'NEAL
Basketball
Track

COACHES

SPORTS AT "PERK"

The sports at "Perk" are held to be one of the highest types of activity on the campus. They have as objective not merely the development of sportsmanship and fair play among the students but also the promotion of physical development.

Perkinston, which is a member of the Mississippi Junior College Conference, complies with all the rules of the association and carries on all of its contests in a sporting manner.

Football is probably the most popular sport at Perk; however, the other sports--Basketball, baseball, boxing, tennis, and track--are rated equally as well. The school ranks consistently near the top in all of its undertakings.

The boys and girls who are participating in the various teams are, in reality, practicing living with others in an intelligent manner. They play to win; but if they lose, they take their defeat as true sportsmen do.

CHEER LEADERS

Left to right:

HOWARD POLLOCK
ELISE NETHERLAND
RUTHELIA LOTT
RUBY JOHNSTON



We look to our cheerleaders to inspire enthusiasm toward our football games. The cheerleaders were composed of Elise Netherland, Ruthelia Lott, Howard Pollock, Ruby Johnston. They were always ready with a snappy yell to pep up the student body when the game got dull and uninteresting. Their ever-ready smile and spirit of never-say-die added greatly to the cheers and spirit of the games.





The PLAYERS . . .

Reginald Switzer, Captain and Field General. Led "Perk" to many victories. He will be missed next year. Tommy Glass, Co-captain and fine guard, was one of the best defensive men on the team. He graduates this year. "Pickle" Forte will be missed at center next year because of his accurate and dependable playing. J. T. Coffman, captain elect, is a fine backfield man. Big things are expected of "Duner" next year. C. T. Mauley made a fine, scrappy tackle. "A Ticket-A-Ticket" will be missed next year. Hilary Horne, that Kosciusko flash, will be back at his old position at tackle next year. John Williams, although hurt in the Ellenville game, played championship ball at end. John Norwood, a fine blocker and pass receiver will be missed at end next year. Bill Blakely, a light, but scrappy man, will be had to replace at guard for the Bulldogs. Solon Etheridge, one of the best all around men in the backfield, will be known for his consistent playing. Frank Hodges will be remembered for his blocking and consistent playing. His position

tion at halfback will be hard to fill next year. Pat Reeves, small but shifty back, is expected to play a big part in the back field next year. Alvin Malley will be expected to make a fine field general on the team next year. Melvin Kenneth, a fine substitute end of last year, is expected to be a good regular next year. Shannon Pickich, a good center, will be back next year to see lots of action. Beaumont Meaut, a former back playing at end, from whom big things will be expected next year. Robert Boyd will be back next year to his old position at end. Terrell Wise, who will be remembered by his passing and running against Goodman, will be back next year. Victor Royal, a scrappy end, will be missed from the squad next year. E. O. Cunningham, a big, fast tackle, is expected to show up well at tackle next year. Thurlow Walker, a powerful center, will be back next year at "Perk." Elmer Fillingim, a passer and runner of unusual ability, will be back next year to help the team at halfback.



FIRST ROW: Clett Kemp, J. B. George, "Bill" Blakely, Wilfred Gallotte, Shannon Pickich, Beaumont Meaut, Thurlow Walker, Solon Etheridge, "Stumpy" Hodges, "Pat" Reeves, Frank Moore, "Jeff" Webb, Alvin Malley, "Zip" Vance.

SECOND ROW: L. J. Stringer, "Pickle" Forte, Elmer Fillingim, John Denning, Frank Davis, V. W. Yeager, Sardin Roberts, "Vic" Royal, J. J. Hayden, Dent O'Neil, William Jorgensen, Melvin Kenneth, John Williams, "Jim" Sprinkle.

THIRD ROW: Coach Rexinger, Joe Thompson, Manager; Terrel Wise, Reginald Switzer, Captain; E. O. Cunningham, Hilary Horne, F. J. Haynes, C. T. Manley, John Norwood, "Tommy" Glass, Co-Captain; "Duner" Coffman, Robert Boyd, Walter Keith, "Doc" Brasfield.

RESUME OF SEASON

Football at "Perk" this year made a fine showing for itself. It was considered a highly successful season in comparison with back seasons. Perkinson opened the schedule with a heart-breaking loss to Ellisville by the score of 3 to 0. John Williams, first string end, broke his leg in this game and was lost for the rest of the season. "Perk" then picked up steam and whipped a highly praised team from Summit, 35 to 0. But they fell into a relapse by losing to a good Freshman team from Millsaps. The score was 7 to 0. Then "Perk" showed its real power by rolling over the next four opponents in succession. Scooba fell before the Bulldogs by a score of 31 to 0. Springhill Freshmen put up a good fight but were beaten, 14 to 0. Then came the important game with Goodman. "Perk" won 12 to 6 for the first time in five years. A mediocre team from Mississippi College were taken into camp with the trim of 49 to 0. "Perk" then laid off a week to get ready for Poplarville, their old rivals. "Perk" was favored to win but Poplarville showed fine team work to win 19 to 0. Everyone was saddened by this loss but everyone agreed that "Perk" had a very good year.

BOXING

Boxing at Perkinson this year was very good. Starting from green material, Shannon Pickich, the Coach, rounded into shape a very formidable team. Showing more strength in the lighter weights, Perkinson ended the season by winning 2 and tying 1 out of 6 fights. Jack Anders, Glen Sletten, Frank Miller, Warren Boney, Billy Swanzey, and Joe McMahan were the mainstays of the team along with the Coach, Shannon Pickich. Perkinson opened the season with impressive winning over Poplarville by a score of 6½ to 2½. But Poplarville came back to win two by the score of 4½ to 3½ and 5½ to 1½. Perkinson then met a highly publicized team from Raymond. They drew on the fight 4 to 4. Perkinson met them on a return engagement and beat them 3½ to 1½. "Perk" lost a hard fought match to Poplarville to close the season.

First Row:

SHANNON PICKICH
WARREN BONEY
"BOB" RICH
"BILL" JORGENSEN
"BILL" SWANZEY
FRANK MOORE
"JOE" McMAHAN
OLLIAN NETHERLAND, Mgr.

Second Row:

HAROLD WHITE
DENNIS LOWERY
GLEN SLETTEN
ERIC BEATTY
JACK ANDERS
BERNARD LAGUARDIA
JACK COOK
FRANK MILLER



BASKETBALL at "PERK"



Standing: Coach O'Neal, Louise Roberts, Capt.: Sally Core, Theresa Hubert, Myrtle Willie, Vida Tyrone, Ruthelia Lott, Harry Goza, Mgr.
Sitting: Ellie Mae Norwood, Elise Netherland, Frona Sprinkle, Audrey Dick, Evelyn Black, Alternate Capt.; Mary Anne Roberts, Dick Turcotte.

GIRLS' BASKETBALL

With most of last year's good squad back, "Perk" was rated one of the best girls' teams ever to play here. With Sally Core along with Ruthelia Lott, an All-State guard from Tennessee, and Vida Tyrone at guards; Louise Roberts, Frona Sprinkle, and Theresa Hubert at forward, a combination was formed that seemed unbeatable. They had a highly successful season. They lost to Goodman the Championship Tournament.

THE SCORES

Ellisville	13	-	-	-	-	-	-	Perk	48
Ellisville	15	-	-	-	-	-	-	Perk	41
Scooba	10	-	-	-	-	-	-	Perk	33
Summit	48	-	-	-	-	-	-	Perk	34
Summit	58	-	-	-	-	-	-	Perk	44
Wesson	31	-	-	-	-	-	-	Perk	33
Summit	33	-	-	-	-	-	-	Perk	21
Summit	42	-	-	-	-	-	-	Perk	23
Mobile Indep.	22	-	-	-	-	-	-	Perk	46
Hattiesburg Indep.	9	-	-	-	-	-	-	Perk	56
Ellisville	19	-	-	-	-	-	-	Perk	34
Ellisville	22	-	-	-	-	-	-	Perk	40
Poplarville	38	-	-	-	-	-	-	Perk	41
Poplarville	33	-	-	-	-	-	-	Perk	43

Sally Core, all round athlete, played a fine game at guard. She will be missed next year. Ruthelia Lott, a fine guard of unusual ability. Will be expected to be one of the mainstays of next years' team.

Evelyn Black, a good forward will be missed next year.

Theresa Hubert will graduate this year. Her left hand shooting was one of the high lights of the season.

Frona Sprinkle, small and fast, was the spark plug of the team this year. She will also graduate this year.

Audrey Dick, an excellent forward who has a good eye for the basket, will be back to play forward next year.

Louise Roberts, a fine shot with one hand, will be missed from the squad next year.

Elise Netherland, small but fast, scrappy guard, will leave the team a big gap to fill.

Mary Anne Roberts is a fast guard. She will play a big part in the success of the team next year.

Vida Tyrone, a hard playing guard, will be expected to fill one of the varsity spots.

Ellie Mae Norwood, a spunky little player, will add strength to next year's team.

Cecile Turcotte will be back next season with her accurate shots at forward.

Myrtle Willie, a tall and rangy guard, shows promise to be one of next year's stars.



BASKETBALL at "PERK"



First Row: Coach Rexinger, Solon Etheridge, Elmer Fillingim, Duner Coffman, Dent O'Neal, Joe Skelton, James Forte, Joe Thompson, Mgr.

Second Row: John Brown, Hilary Horne, C. T. Manley, Robert Boyd, Sardin Roberts, Conrad Bishop.

* * * * *

BOYS' BASKETBALL

Boys' basketball at "Perk" was blessed by one of the best and scrappiest boys' teams that have played on the hardwood at "Perk" in many years. Although "Perk" lost 12 out of 21 games they showed up the best against the better teams. C. T. Manley, the captain, along with Hilary Horne, Solon Etheridge, John Brown, and Dent O'Neal, carried the burden of most of the games. Tommy Glass and John Norwood, two mainstays, were lost to S. T. C. and Centenary, respectively. But the team worked together in fine form and showed improvement all through the season. More interest was shown in basketball this year than has been shown in previous years. With two men on the standing line-up back and with several good substitutes designed to fill up the other places a worthy team should be produced next year.

C. T. Manley, a tall, rangy captain, will be missed next year as a leader and a good player.

Solon Etheridge, a good sport and scrappy player, made a fine forward and his place will be hard to fill.

James Forte, a good dribbler and fast player, will also graduate from the team.

Tommy Glass, a regular guard for two seasons, will be hard to replace.

John Norwood, a consistent player, will also leave his spot to be filled next year.

Hilary Horne, a big and accurate center, will be a regular on next year's squad.

Dent O'Neal, a high scoring forward, is expected to be one of the mainstays of next year's team.

John Brown, who played fine games for "Perk" at forward, will graduate this spring.

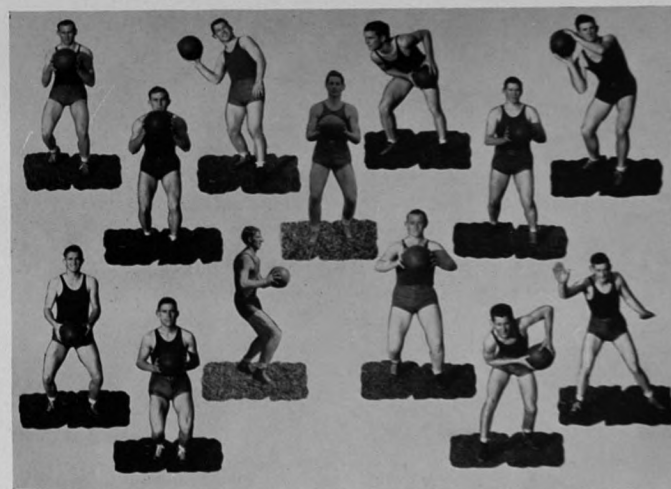
J. T. Coffman will bolster the team's strength next year at guard.

Sardin Roberts, a tall, speedy player, will be depended on next year as a good ringer.

Robert Boyd, a freshman, will graduate to the varsity next season.

Elmer Fillingim is well remembered for his long range shooting and fast playing. He will be back.

Ruby Johnson is expected to make a good showing on next year's squad.





GIRLS' TENNIS

LOUISE ROBERTS
RUTHELIA LOTT

"MARY NAN" ROBERTS
ELLIE MAE NORWOOD

HIGH SCHOOL TENNIS TEAM (No Picture)

ALICE WORTHINGTON

JEAN PARKER

T E N N I S

The girls' tennis team will be composed of four players. The team is small but the ability of the players is very high. Louise Roberts is back from last year's squad in the doubles. Ruthelia Lott, Mary Ann Roberts, and Ellie Mae Norwood complete the team. The team is expected to do well according to the showing of the girls in practice. The High School doubles will be handled by Alice Worthington and Jean Parker. Coach expects all the tennis teams to go far in the contests in which they participate.



BOYS' TENNIS

ALBERT MANGIN

MELVIN KENNETH

ANGUS McBRYDE

CONRAD BISHOP

ROBERT GERONON

BILL REID

BILLY LEE

at "P E R K" . .

The boys' tennis team this year is composed of first year men. Several good prospects will hold the main burden of the matches. Melvin Kenneth and Bill Reid were the doubles' champ of the school. Linfield Smith, Angus McBryde, James Forte, and Conrad Bishop round out the varsity squad. Leroy Weeks, Jr. and Frank Russum will play doubles for the high school, with Bobby Thomson at singles. Coach Weeks says the outlook is fine for a very good season on the courts.

T R A C K at

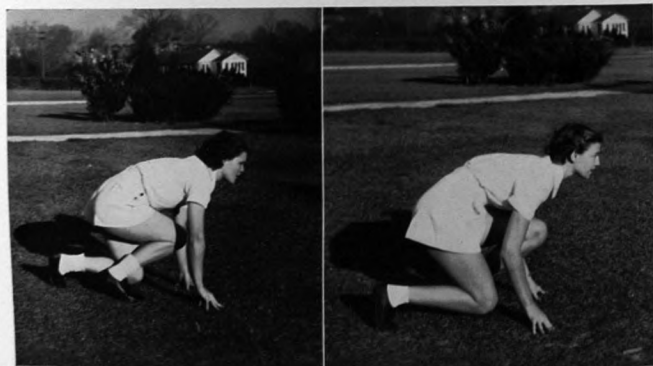


Standing: Ruthella Lott, "Sally" Core, "Dick" Turontie, Coach O'Neal.
Kneeling: Frona Sprinkle, "Mary Nan" Roberts, "Gytchie" Netherland.

GIRLS' TRACK

Sally Core, mainstay of this year's team, will be missed for her fast dashes and good sportsmanship. Mary Ann Roberts, designed to keep her champ's record clean, will be expected to lead next year's team. Frona Sprinkle, last year's track girl, intends to end her last year of track at "Perk" with a bang. Cecile Turontie, new track girl and leader of the dashes intends to make a name for herself up here this year. Ruthella Lott is noted for her baseball throw. She'll go places this year and next. Audrey Dick, coast girl will go places this year and next with her broad-jump.

The girls' track made a fine showing last year and with the mainstays back and with promising candidates the girls should make a fine showing. The team is built around Sally Core, who is rated second best track girl in the South. Also Elise Netherland and Ruthella Lott are very impressive. Mary Ann Roberts, champion high school dash champ, is expected to make a big showing on the team.



"SALLY"

"MARY NAN"

"P E R K" . .



KNEELING

STANLEY RATOMSKY
ELMER FILLINGIM
HAL BUCHANNAN

J. B. GEORGE
HOWARD POLLOCK
WILFRED GALLOTTE

STANDING

BILL COOK, Mgr.
LINFIELD SMITH
CARL McKEE
BUFORD COLLINGS
CHARLES MORGAN
ANTON REEL

JOE THOMPSON
HERMAN POLANSKY
HAL PEARLMAN
GLENN KEMP
ELBERT WEBB
COACH O'NEAL

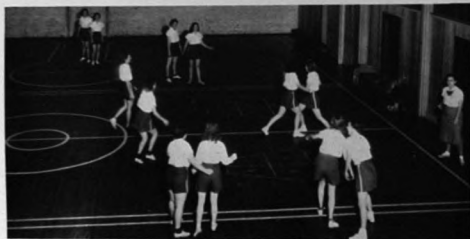
* * * * *

BOYS' TRACK

With track holding a big interest at "Perk", the boys will try to hold this interest up. The team will be centered around the mainstays from last year and a strong combination will be sought. Coach O'Neal has turned out excellent teams since he has been at "Perk" and we believe this year's team will uphold his record.

PHYSICAL

During the year the girls' and boys' physical education classes engage in various sports which have as their objectives not only the development of skill and sportsmanship, but also the development of physical fitness. At the end of the period devoted to each sport, an intra-mural tournament is held in which the various teams vie with each other for the championship. The members of the winning team receive an intra-mural emblem and afterwards a blue star for each championship team which they make.



COLLEGE GIRLS'
BASKETBALL



BOYS'
TOUCH FOOTBALL
BASKETBALL
VOLLEY BALL



HIGH SCHOOL GIRLS'
BASKETBALL
VOLLEY BALL
SOFT BALL



VOLLEY BALL

EDUCATION

CLOSE-UP OF
BASKETBALL



COLLEGE GIRLS'
VOLLEY BALL



TENNIS
AND

BASEBALL



The Physical Education program is planned to meet the needs, abilities, and interests of all girls on the campus. At the beginning of the year all students were given a thorough physical examination, and a record was made of every individual. In this way, the Physical Education program was adapted to meet the needs of the students.

MORE *Physical* - - EDUCATION . . .

The activities are planned so that the school year is divided into sports seasons, one sport being taught and played in class over a certain period of time, and terminated by an inter-class tournament. In the Fall, quoitennis, volley ball, and soccer for the girls with touch football for boys are offered. During the winter season Basketball is played; in the Spring season, girls have their choice of soft ball, tennis, archery, or recreational sports. Students who are not physically able to participate in the regular classes are assigned to Restricted Class. The various activities engaged in, both in class and after school, give students the opportunity to enjoy a richer and more active life.

The Physical Education Department strives to fulfill the following objectives:

1. Promote physical, mental and emotional health.
2. Enrich the student's social experience.
3. Teach activities that will be of value for recreational purposes.
4. Teach good sportsmanship.
5. Develop intelligent spectators.

--Thou, too, sail on, O Ship of State!
Sail on, O UNION, strong and great!
Humanity with all its fears,
With all the hopes of future years,
Is hanging breathless on thy fate!
We know what master laid thy keel,
What Workmen wrought thy ribs of steel,
Who made each mast, and sail, and rope,
What anvils rang, what hammers beat,
In what a forge and what a heat
Were shaped the anchors of thy hope!
Fear not each sudden sound and shock,
'T is of the wave and not the rock;
'T is but the flapping of the sail,
And not a rent made by the gale!
In spite of rock and tempest's roar,
In spite of false lights on the shore,
Sail on, nor fear to breast the sea!
Our hearts, our hopes, are all with thee,
Our hearts, our hopes, our prayers, our tears,
Our faith triumphant o'er our fears,
Are all with thee,--are all with thee!

The Building of the Ship,

LONGFELLOW

YEAR CALENDAR

Sept. 4—Students arrive at "Perk."
 Sept. 6—Freshman-Sophomore get-together.
 Sept. 7—First day of school.
 Sept. 10—Formal dance in the gym.
 Sept. 16—"Y" Carnival in gym.
 Sept. 18—Boys lost their hair.
 Sept. 19—Girls' Initiation.
 Sept. 20—Initiation discontinued.
 Oct. 1—First orchestra dance.
 Oct. 11—Health examinations.
 Oct. 20—Louis Farrera's concert.
 Oct. 22—Orchestra dance--more fun!
 Oct. 24—Beantown Choir--play by Wiggins group.
 Nov. 12—Informal dance.
 Nov. 17—"Spring Fever"--best play of the year.
 Nov. 19—Homecoming.
 Nov. 20—Headaches.
 Nov. 23—Thanksgiving holidays begin.
 Dec. 3—Backward dance.
 Dec. 9—Chester Swor.
 Dec. 10—Banquet (Football).
 Dec. 15—Messiah.
 Dec. 16—Christmas holidays begin.
 Jan. 2—Back at school.
 Jan. 5—"Who's Who Contest."
 Jan. 7—Basketball season starts.
 Jan. 17—Mid-term exams--ugh!
 Jan. 20—Formal dance.
 Jan. 24—Le Petit Ensemble.
 Feb. 2—Prof. Phizz.
 Feb. 3—Boxing begins.
 Feb. 4—Formal dance.
 Feb. 18—Informal dance.
 March 4—Strike for privileges.
 March 4—Informal dance.
 March 10—Informal dance.
 March 11—Bellingrath Garden trip.
 March 17—Contest plays.
 March 18—Informal dance.
 March 25—"P" Club Shipwreck dance.
 March 30—Informal dance.
 April 4—Jill Edwards and her personality talk.
 April 6—Easter holidays begin.
 April 7-8—Band Contest.
 April 29—Boat ride.
 May 20—Farewell dance.
 May 21—Baccalaureate Sermon.
 May 26—Graduation.

Presenting

THE FUTURE "MISS PERKINSTONS"



THE HUNT TWINS

NO PICTURES

SOPHOMORES

HELEN ALLEN	- - - - -	Belxey, Miss.
BESSIE ANTHONY	- - - - -	Wiggins, Miss.
PAUL HATTEN	- - - - -	Wiggins, Miss.
HILARY HENGEN	- - - - -	Biloxi, Miss.
HERSCHEL NASH	- - - - -	Biloxi, Miss.
HAL PEARLMAN	- - - - -	Bronx, New York
MAXINE PRICE	- - - - -	Perkinston, Miss.
BILLY SWANZEY	- - - - -	Biloxi, Miss.
ELBERT WEBB	- - - - -	Gulfport, Miss.
CONRAD BISHOP	- - - - -	Georgiana, Ala.

* * * * *

HIGH SCHOOL SENIORS

LORRAINE DANZEY	- - - - -	Perkinston, Miss.
JOHN DENNING	- - - - -	DeLand, Fla.
HELEN LOTT	- - - - -	McHenry, Miss.
MILDRED MILLS	- - - - -	Perkinston, Miss.


NO PICTURES

COLLEGE FRESHMEN

WALTER ABEL	JAMES LEE
MRS. PAULINE ALLEN	MILLIE MAE LEE
BILLIE ANNIS	CLAYTON LEHMAN
NED BATSON	WILLIAM LIBERIS
JOHN BLAKE	BILLY LIPSCOMB
WILLIAM BLAKELY	DOUGLAS LYNCH
EVERETT BOND	GENEVIESE McDANIELS
WARREN BONEY	JOHN KNOX McCLOD
ROBERT BOYD	DAN McINNIS
ROLAND BREWTON	ROBERT McNAMEE
JOSEPH CAIN	BURNEY MARTIN
THOMAS CAIN	FRANK MOORE
FRIDGE CAMERON	CHARLES MORGAN
JOHN D. CLARK	WESLEY MORRISON
J. L. CLAY	WILLIAM MORRISON
JOE CLOWER	CLIFFORD MURPHY
WILLIAM COLEMAN	CECIL O'NEAL
OLLIS COOPER	DENT O'NEAL
E. O. CUNNINGHAM	EMORY O'NEAL
RICHARD DAVIES	CLAY PARLIN
HENRY DAVIS	HERMAN POLANSKY
JOSEPHINE DENSON	STANLEY RATOMSKY
MARSHALL DOUGLAS	WILLIAM REID
MARION DOWNING	ANTON REEL
RAY DUBUISSON	SARDIN ROBERTS
DAVID FAIRLEY	EARL ROHRER
ROBERT FULTZ	INEZ ROHRER
MADIE GIBSON	STEVE H. ROSS
MARTEAL GREEN	JAKE SHAW
DOYLE HARVISON	MALLETTE SHERMAN
THELMA HATTEN	JAMES SMITH
RABURN HAWKINS	MONROE SMITH
DIXON HODGES	CARMEN TANNER
HOUSTON HUDGINS	WILLIAM TANNER
JAMES KELLY	HARRISON WILHITE
JAMES LAIRD	GEORGE WILSON
WARREN LASSERE	V. W. YAEGER

And so, my friends, we leave our school and its pleasant memories with the wish that the students who follow us will find within the walls of our school, the happiness, the joy, and the fellowship which has endeared it to our hearts.

FINIS



Our

PATRONS



SALE'S STUDIO

Annual Photographs

by

H. D. SALE

GULFPORT

MISSISSIPPI

Compliments of
ANDERSON'S

▼
MENS WEAR

▲
GULFPORT

MISSISSIPPI

The **Peoples Bank of Biloxi**

BILOXI, MISSISSIPPI

Established 1896

43 years of conservative, successful banking

MARGARET'S

•
GULF COAST
PECAN CANDIES

•
BILOXI

MISSISSIPPI

COMPLIMENTS
of

DEES & CO.

▼
Perkinston Mississippi

H. T. Cottam & Co., Inc.

GULFPORT, MISS.

▼
*Wholesale Grocers
and Distributors*

"My Scotch boy friend sent me his picture yesterday."

"How did he look?"

"I don't know yet. I haven't had it developed."

There were three men in a boat with four cigarettes but no matches. What did they do? They threw out one cigarette and made the boat a cigarette lighter.

—Yellow Jacket.

Prof.: "Is that your cigarette stub?"

Frosh.: "Go ahead, you saw it first."

—Mis-a-sip.

Compliments
**MISSISSIPPI
SCHOOL SUPPLY CO.**

•
Jackson, Mississippi

W. V. JOYCE & CO.

•
"The Coast's Best Store"

•
BILOXI, MISSISSIPPI

R. M. HENDRICK

Representing

Herf Jones Company

CLASS RINGS — INVITATIONS
DIPLOMAS

Jackson

Mississippi

The moon was white,
The road was dark.
A perfect place
To stop and park.
I gave a sigh,
I gave a moan
I cursed the fates—
I was alone.

—Mis-a-sip.

Dear Mr. Palmolive:

I bought a tube of your shaving cream. It says no mug required. What shall I shave?

Yours truly,

Oscar Zilch.

—Mis-a-sip.

J. C. Clower Furniture Company

"The Furniture Men"

GULFPORT

MISSISSIPPI

First National Bank of Biloxi

*"Oldest Bank on the
Mississippi Coast"*

BILOXI

MISSISSIPPI

One guy: "Did you mark that place where fishing was so good?"

Another guy: "Yes, I put an X on the side of the boat."

First guy: "That's silly. What if we should get another boat?"

Just think, Dan tried to put his arm around me four times last night.

"What an arm!"

—Pell Mell.

"Know how to keep a horse from drooling?"

"No."

"Teach him to spit."

—The Student.

Coca-Cola

COAST COCA-COLA
BOTTLING CO.

•
GULFPORT

MISSISSIPPI

The Powers Company

DITTO AND MIMEOGRAPH
MACHINES AND SUPPLIES

BLANK PAPER SCHOOL SUPPLIES

Mobile, Alabama

Compliments of
MONARCH CHEMICAL COMPANY
 NEW ORLEANS, LOUISIANA

▼
MANUFACTURERS OF
Disinfectants, Insecticides, Sanitary Supplies

*Come Spend the Week-End
 With Us*

CITY of BILOXI

LOUIS BRAUN, Mayor

F. A. TUCI, Com. of Finance and Education

JOHN SWANZY, Com. of Public Works

"Oh, dear, I've missed you so much!"—and she raised her revolver and tried again.

—Log.

"Let's play house. I'll be the walls and get plastered."

—Dodo.

Indignant farmer: "Say, look here, you ain't getting as much milk as you uster."

Hired man: "Nope, sorta lost my pull."

Pell Mell.

Sam: I s'pose you dance?

Lisa: Sattinly, I love to.

Sam: Dot's better than dancing.

—Mis-a-sip.

Steward-Sneed-Hewes

Incorporated

**Fire—Wind Storm
 Casualty—Bonds**

Phones 170-171

GULFPORT

MISSISSIPPI

Enamored: "I think June is the ideal Prom girl."

Disgusted Roommate: "Yeah, prominent ears, prominent teeth, prominent chin!"

Enamored: "True, but go on."

—Mis-a-sip.

"You seem to cough much easier this morning," the physician remarked to his patient.

Weak Patient: "It isn't any wonder, I've been practising all night."

—Exchange.

Boastful Angler: "I've had a three hours fight with a salmon."

Bored Friend: "Yes, can-openers are most annoying."

COMPLIMENTS OF
L. & N. BAKING COMPANY

HOME OF

SERVICE and QUALITY

Biloxi

Phone 196

Mississippi

**short
 and
 SNAPPY**

LOEB'S ARE NOTED FOR QUALITY and SERVICE
 Whether in Band Uniforms, Athletic Equipment, Caps and Gowns, or smart clothes for dress or sport, send us your orders with complete confidence.

52 years of service to our credit.

ALEX LOEB, Inc.

MERIDIAN and UNIVERSITY, MISSISSIPPI

FRANK P. CORSO

WHOLESALE

Cigars - Tobacco - Candies

Phone 314

BILOXI

MISSISSIPPI

Found on a freshman's registration card. Name of parents: "Mama and Poppa."

—Aggrievator.

I hear Cupid almost got you last week.

Yes, I had an arrow escape.

—Mis-a-sip.

The new comer knocked on the Pearly Gates and St. Peter's voice called: "Who's there?"

"It is I," answered the newcomer.

"Well, get out. We don't want any more school teachers."

—Mis-a-sip.

"I want you to meet him. He's a good mixer."
 "But I never drink!"

He: "Do you know you look like Helen Brown?"

She: "Well, I look even worse in red."

—Mis-a-sip.

"Who yuh shovin'?"

"Dunno, what's your name?"

—Mad Hatter.

"Do you believe in clubs for women?"

"Only if kindness fails."

—Mis-a-sip.

COMPLIMENTS OF

CITY of GULFPORT

▼
**Harrison County,
 Mississippi**

SOUTHERN COAL COMPANY, Incorporated
HIGH GRADE STEAM & DOMESTIC COAL

General Office, Memphis, Tennessee
New Orleans Louisiana

Compliments of

M. Salloum
Department Store

Gulfport Mississippi

Patient: Oh, doctor, I am so sick; if I could only die.
Doctor: I'll do the very best I can for you.
—Mis-a-sip.

Don't act like a baby.
Can't help it; I was born that way.
—Mis-a-sip.

Wm.: "Have you got a picture of yourself?"
Roommate: "Yeah."
Wm.: "Then let me use that mirror, I want to shave."
—Mis-a-sip.

HANCOCK BANK

Gulfport
Pass Christian
Bay St. Louis

"If you try to kiss me, I'll call mother."
"What's the matter with your father?"
"Oh, he's not as deaf as mother is."
—Pell Mell.

K. A.: Your sister is spoiled, isn't she?
P. K.: No, that's the perfume she uses.
—Mis-a-sip.

Red: "Guess who this is in three guesses or I'll kiss you."
Gladys: "George Washington . . . Jack Dempsey . . . Admiral Byrd."
—Mis-a-sip.

COAST HARDWARE

**HOME OF JOHNSON OUTBOARD
MOTOR and NORGE APPLIANCES**

1408-1410 25th Avenue

Gulfport Mississippi

Riemann Funeral Home

PHONE 29-J

1718 25th Avenue

Gulfport Mississippi

HARRISON—STONE—JACKSON
Agricultural High School and Junior College

The Harrison-Stone-Jackson Junior College is a member of the State Association of Colleges, the Southern Association of Colleges and Secondary Schools, and the American Association of Junior Colleges. Its work is recognized as standard anywhere in the South.

The College owns 650 acres of land, is housed in 14 large buildings, and has an enrollment this year of 450 students.

In addition to two years of academic work, the college maintains strong departments in commerce, music, agriculture, and home economics.

Perkinston, Miss.

C. J. Darby, Supt.

TRENTON'S SUPPLY CO.

HARDWARE, FARM MACHINERY AND BUILDING MATERIALS
Wiggins, Mississippi

Wiggins Dry Cleaners

▼
*Come Clean With Us
And We Will Dye For You*

▼
WIGGINS, MISSISSIPPI

WIGGINS DRUGS

SHEAFFER PENS & PENCILS
Wiggins Mississippi

WILSON PHARMACY

THE PRESCRIPTION DRUG STORE
PHONE 23
Wiggins Mississippi



Ready to Face the World

★ ★ COME WHAT MAY.

CONFIDENCE is the heritage of youth . . . it is also a fundamental requirement of business . . . attained by long study, training and experience • We have enjoyed the confidence of yearbook Staffs throughout the country for over thirty years . . . an accomplishment for which we are truly grateful and justly proud . . .

★ ★ ★ ★ ★
COLLEGE ANNUAL DIVISION
ALABAMA ENGRAVING COMPANY
BIRMINGHAM