

Perkolator

1941



Printed by
GULFPORT PRINTING COMPANY
GULFPORT, MISSISSIPPI

PERKOLATOR

1941





The | 9 4 |
PERKOLATOR



The

P E R K O L A T O R

1941

Published by the students of
Harrison - Stone - Jackson Junior
College and Agricultural High
School, Perkinston, Mississippi.

Editor, Robert W. Cox

Business Manager, "Bill" Newsum



F O R E W O R D . . .

Characteristic of the South and of its people we find an air and aroma of informality. Yet it is the explanation and reason for the South and its color. Because of our love for all that it symbolizes, we have made the 1941 Perkulator a memo of this informal way of life.

CONTENTS

- I. The College
- II. The Classes
- III. Activities
- IV. The Features
- V. Athletics





Dr. Travis W. Brasfield

DEDICATION

To

Dr. Travis W. Brasfield, for distinctiveness of personality, ability and sincere interest in students and their problems.

In recognition of his loyal service to our school and country, we dedicate this, the sixth edition of the Perkolator, to Dr. Brasfield.

ALMA MATER

*Way down South there's a school that we all know,
Where the winds from the gulf doth ever blow.
'Mong the pines so stately and so tall
We listen to your call,
We love you best of all.*

*Fame was thine through the years of the past,
And we know thy name shall ever last.
Thou art noble, proud, and true,
Oh, Perkinson, we all love you!*



The C O L L E G E

Campus V I E W S

Up the Hill



Harrison Hall

Freshman Dormitory



More

VIEWS

Harrison Hall



Science Building

Administration Building





C. J. Darby

Our PRESIDENT

"Perk" owes much to Mr. Darby for his able leadership during the past twelve years.

FACULTY

JULIA B. SLAY.....*Dean of Women*

L. R. WEEKS, B. S.....*Dean of Men
Mathematics*

C. O. HINTON, B. S., M. S.....*Chemistry*

B. P. RUSSUM, B. S., M. A.....*Social Science
Education, Registrar*

GRACE FRAZIER, B. A., M. A.....*Language*

EDNA ELLEN HANEY, B. A., M. A.....
English

W. G. GREGORY, B. A., M. A.....
Mathematics

INA MAE HART, B. A., B. S., M. A.....
Commercial

F. O. PARSONS, B. A., M. S.....*Agriculture*

MARY ELEANOR JOHNSTON, B. S.,
M. A.....*Home Economics*





The FACULTY

L. P. INGRAM, B. S.....*Science*

J. O. BROWN, B. S.....
Athletics, Mathematics

DOROTHY BROWN, B. A., M. A.....*English*

HARRIET FULTON, B. A.....
Voice, Dramatics

ELTON DALIER, B. S.....
Physical Education, Social Science

STANLEY C. BEERS, B. A.....
Mathematics, Band

A. I. REXINGER, B. S.....
Athletics, Physical Education

MARY LOCKE, B. A., M. A.....*English*

RAIFORD E. SUMNER, B. A., M. A.....
History

RUTH GREGORY, B. M. of Piano, B. M.
of Violin.....*Piano, Violin*

ELSIE TRULY, B. A., B. A. in Library
Science.....*Librarian*

DOROTHY COVINGTON.....*Cashier*

CHARLES CLODFELTER, B. S., M. A.
Science

BILL DAVID.....*Secretary*

MRS. L. R. WEEKS.....*Dietitian*

JULIUS FELECIONE, A. A. A. A., B. S.,
A. A.....*Commercial, Social Science*

GLORINE LOTT.....*Nurse*

BOARD OF TRUSTEES

| | |
|---------------------------|----------------|
| <i>President</i> | |
| VINCENT B. SMITH, SR..... | Pass Christian |
| <i>Vice-President</i> | |
| W. LUTHER BLACKLEDGE..... | Saucier |
| <i>Secretary</i> | |
| J. N. DEDEAUX..... | Perkinston |
| C. S. WENTZELL..... | Biloxi |
| W. C. HEAD..... | Gulfport |
| R. J. MORAN..... | Saucier |
| O. L. LADNIER..... | Gulfport |
| T. W. LOTT..... | Wiggins |
| J. H. BRELAND..... | Perkinston |
| D. E. SMITH..... | Perkinston |
| J. A. CHERRY..... | Wiggins |
| D. D. O'NEAL..... | Wiggins |
| H. P. HEIDELBERG..... | Pascagoula |
| M. B. CUMBEST..... | Escatawpa |
| E. E. FLURRY..... | Perkinston |
| MISS MARY O'KEEFE..... | Ocean Springs |
| W. V. SUTHOFF..... | Moss Point |
| A. F. McGEHEE..... | Pascagoula |



The STUDENT BODY



OFFICERS

President
BRADLEY BERRY
Vice-President
HOWARD POLLOCK
Secretary
BESSIE CLARK
Treasurer
PAT CAROLAN
Sergeant-at-Arms
STOYA FIRTH

The SOPHOMORES

They leave with the knowledge and satisfaction of a good job well done. May all their hopes and ambitions be fulfilled.



The SOPHOMORES

WILLIAM ANDERSON.....Amarillo, Texas
"Bill"

Phi Theta Kappa; B. Y. P. U.; Spanish Club; Y. M. C. A.;
Dramatic Club; Glee Club; I. R. C.; State Exam. Spanish.

VIRGIL E. BAGGETT.....Gulfport, Miss.
Track '49; "P" Club.

GEORGE RICHARD BARRETT.....New Orleans, La.
"Colonel"
French Club '49, '41; Y. M. C. A. '49, '41; Camera Club '41;
Wesley Foundation '49, '41; State Exam. Biology.

LORETTA MAE BARRETT.....Gulfport, Miss.
"Lola"
Spanish Club '49; I. R. C. '49, '41; Y. W. C. A. Cabinet '49,
'41; Wesley Foundation, Reporter '49, '41; Phi Theta Kappa
'49, Secretary '41; Annual Staff '49; Associate Editor '41;
Commercial Club '49, President '41; Most Versatile Girl '41;
Dramatic Club '49, Secretary '41; State Exam. Health.

MARGIE BATSON.....Perkinstog, Miss.
"Marge"
Phi Theta Kappa '49, Vice-President '41; I. R. C.; State
Exam. Spanish.

WINIFRED BATSON.....Perkinston, Miss.
"Winnie"
Phi Theta Kappa '49, Historian '41; State Exam. English.

HELEN BEASLEY.....Lucedale, Miss.
"Red"
Social Arts Club '41; B. Y. P. U. '49, '41; Home Economics
Club '49; Y. W. C. A. '49, '41; Pep Squad '49, '41.

ANN BECKHAM.....Pascagoula, Miss.
"Butch"
Catholic Club '49, '41; Band '49, '41.

PHILIP BELLEW.....Success, Miss.
Y. M. C. A. '49, '41; Agriculture Club '49, '41.

BRADLEY BERRY.....Gulfport, Miss.
President Sophomore Class.

ELIZABETH ADELIA BLACK.....Purvis, Miss.
"Bessie"
Y. W. C. A. '49, '41; Band '49, '41; Student Council '49, '41;
Homecoming Queen '41; Episcopal Club.

JESSIE BLACKWELL.....Saucier, Miss.
Basketball; "P" Club; Commercial Club.

CORRY DeWITT BLOUNT.....Gulfport, Miss.
"Jimmy"
Y. M. C. A. '49, '41; Presbyterian Club '49, '41; Band '49, '41.

ANNE BROADUS.....Hattiesburg, Miss.
Dramatic Club '41; Pep Squad '41; Glee Club '41; I. R. C.
'41; Y. W. C. A. '41; Spanish Club '41; Cheerleader '41; State
Exam. Spanish.

KATHERINE BURGESS.....Long Beach, Miss.
Y. W. C. A. '49, '41; Commercial Club '49, '41; Home Eco-
nomics Club '49.

EDWIN E. BURT.....Biloxi, Miss.
"Double E"
Y. M. C. A. '49, '41; Agriculture Club '49, '41.

BETTY STEWART CAMPBELL.....Biloxi, Miss.
"Boop"
Catholic Club '49, '41; Wesley Foundation '49, '41; Pep Squad
'49, President '41; Y. W. C. A. '49, '41.

LEO CAMPBELL.....Vancleave, Miss.
"Camel"
Y. W. C. A. '49, '41; Commercial Club, Vice-President '41;
Camera Club '41; State Exam. Typing.

PAT CAROLAN.....Bronx, N. Y.
"Preacher"
Vice-President Freshman Class '49; I. R. C. '49, President '41;
Track '49, Co-Captain '41, "P" Club '49, Reporter '41; Catho-
lic Club '49, President '41; Sophomore Class Treasurer '41;
French Club '49, Vice-President '41; Y. M. C. A. '49, '41;
Student Council '41; State Exam. History.

ELIZABETH CARRIO.....Waveland, Miss.
"Cuz"
Phi Theta Kappa '41; I. R. C. '41; Catholic Club '49, Reporter
'41; Pep Squad '41; "P" Club '49, President '41; Basketball
'49; State Exam. Psychology.

CHARLES W. CARROLL.....Guatemala City,
Guatemala
"Carlitos"
Catholic Club '49, '41; French Club '41; Glee Club '41;
Y. M. C. A. '49, '41.

GUILLERMINA CASDRO.....Guatemala City,
Guatemala
"Mina"
Spanish Club '49; Catholic Club '49, '41.

BESSIE DANTZLER CLARK.....Gulfport, Miss.
Secretary Freshman Class; Secretary Sophomore Class;
French Club '49, Treasurer '41; Y. M. C. A. Secretary '49;
Starlet Ball Court '49; Carnival Ball Court '41; Homecom-
ing Court '49, '41; Most Popular Girl '49, '41; Friendliest Girl
'49; Wesley Foundation '49; Annual Staff '49, Associate
Editor '41; State Exam. Chemistry.

E. W. CLARK.....Vicksburg, Miss.
"E. W."
Football '49, '41; "P" Club '49, '41; Track '49.

JOHN CLARK.....Gulfport, Miss.
BETTY MARIE CONN.....Hattiesburg, Miss.
"Campy"
Wesley Foundation '49; Spanish Club '49, '41; Y. M. C. A.
'49, '41.

EUNICE CONN.....Long Beach, Miss.
"Jackie"
Y. W. C. A. Pianist '49, Chorister '41; B. Y. P. U. Pianist
'49, '41; Phi Theta Kappa '49, '41; State Exam. English.

JACK COOK.....Corpus Christi, Texas



The SOPHOMORES

ROBERT W. COX.....Marion, Ill.
"Bob"

President, Freshman Class; Annual Staff '40; Editor-in-Chief '41; Spanish Club '40; Commercial Club '40; Y. M. C. A. '40, '41; Best Boy Dancer '40, '41; Carnival Ball Court '41; State Exam. Bookkeeping.

JOHANNES DAMBRINK, Jr.Pass Christian, Miss.
"John"

Band '40; I. R. C. '40, '41; Catholic Club '41; Episcopal Club President '41; Spanish Club '40; Reporter '41; Y. M. C. A. '40, '41; State Exam. History.

WALLINE DAVIS.....Perkinston, Miss.
Y. W. C. A. '40, Cabinet '41; Home Economics Club '40; Social Arts Club '41; B. Y. P. U. '40, '41.

CHARLES deMETZ.....Pass Christian, Miss.
Spanish Club '40, President '41; Catholic Club '40, '41; Camera Club '41.

ROSE LOUISE deMETZ.....Pass Christian, Miss.
Newman Club '39; Catholic Club '41; I. R. C. '39, '41; Phi Theta Kappa '39, '41; French Club '39, '41; Y. W. C. A. '39, '41; Commercial Club '41; Most Sophisticated Sophomore '41.

LAWSON J. DIETRICH.....Reading, Pennsylvania
"Dutchman"
Y. M. C. A. '40, '41; Glee Club '40, President '41; Wesley Foundation '40, '41; Spanish Club '40; Track '41.

JACK DODGE.....Gulfport, Miss.

WILLIAM ELAM.....Gulfport, Miss.
"Billy"

Band '40, '41; Glee Club '40, '41; French Club '40, '41; Wesley Foundation '41; Camera Club '41; Y. M. C. A. '40, '41.

ANNIE RUTH FAIRLEY.....Lucedale, Miss.
"Ann"

Y. W. C. A. '40, '41; Wesley Foundation '40, '41; Pep Squad '41; Basketball '40; State Exam. History.

DOROTHY FAIRLEY.....Lucedale, Miss.
"Dot"

Y. W. C. A. '40, '41; Wesley Foundation '40, '41; Pep Squad '41; Basketball '40.

ELLA FLORENCE FAVRE.....Waveland, Miss.
Phi Theta Kappa '41; Y. W. C. A. '40, '41; Commercial Club '40, Secretary '41; Spanish Club '40, Secretary-Treasurer '41; Episcopal Club, Secretary-Treasurer '41; State Exam. Spanish.

JAMES B. FINLEY.....Gulfport, Miss.
"Fletch"
Band '40, '41.

STOVA FIRTH.....Pascagoula, Miss.
Y. M. C. A. '40, '41; I. R. C. '40, '41; Commercial Club '40, '41; B. Y. P. U. '40; Social Committee '41; Most Handsome Boy '41; Superintendent, Student Government '41; Sergeant-at-Arms '40, '41; State Exam. Shorthand.

CHARLES FLICKNER.....Leland, Miss.
"Flick"
Y. M. C. A. '40, '41; Most Courteous Boy '41; Football '40, '41.

STANLEY CHARLES FLOTTE.....Biloxi, Miss.
Commercial Club '40, '41; Catholic Club '40, '41; Camera Club '41; Y. M. C. A. '40, '41.

ETOILA FOX.....York, Ala.
"Foxie"
Y. W. C. A. '40, '41.

ALBERT FRANKLIN.....Gulfport, Miss.
"Long Daddy"
Basketball '40, '41; Football '40, '41; "P" Club '40, '41; Agriculture Club '40, '41; Y. M. C. A. '40, '41; Best Boy Athlete '41.

MARY VIRGINIA FRENCH.....Rose Hill, Miss.
"Gin"
Y. W. C. A. '40, Treasurer '41; Phi Theta Kappa '40, Treasurer '41; I. R. C. '40, Vice-President '41; Pep Squad '40, '41; Glee Club '41; Social Arts '41; Wesley Foundation '40, '41; State Exam. Home Ec.

MIRIAM FRERIDGE.....Knoxville, Iowa
Pep Squad '41; Phi Theta Kappa '40, '41; Y. W. C. A. '40; Presbyterian Club '40, '41.

RAYBON FRERIDGE.....Knoxville, Iowa
"Ray"
Presbyterian Club '41; Y. M. C. A. '41; Commercial Club '41.

DAVID GALBRAITH.....Biloxi, Miss.
"Ring"
Dramatic Club '40, '41; Y. M. C. A. '40, '41; Wesley Foundation '41; Debating Team '41; Presbyterian Club '40.

DANNITTE GILL.....Gulfport, Miss.
Y. M. C. A. '40, '41; French Club '40, '41; Phi Theta Kappa '40, '41; Wesley Foundation '41; I. R. C. '41; State Exam. French.

GEORGE GRACE.....Gulfport, Miss.
French Club '40, '41; Y. M. C. A. '40, '41; Glee Club '41; I. R. C. '41; B. Y. P. U. '41; State Exam. French.

FRANK GRUICH.....Biloxi, Miss.
"Jugo"
Catholic Club '40, '41; French Club '40, '41; Y. M. C. A. '40, '41; Camera Club '41; Baseball '40, '41; Assistant Superintendent, Student Government; State Exam. Organic Chemistry.

EVELYN RUTH HAMILTON.....Gulfport, Miss.
"Ebbey"
Y. W. C. A. '41; Secretary, French Club '41; Student Recreation Committee '41; State Exam. Education.

DORA ELLEN HANSON.....Pass Christian, Miss.
Y. W. C. A. '40, '41; Catholic Club '40, '41; Band '40, '41.

CARLOS HERRERO.....Costa Rica, Central America
Spanish Club '40, '41; Catholic Club '41; Agriculture Club '40; Y. M. C. A. '40, '41.

RUBY MERLE HICKMAN.....Wiggins, Miss.
Home Economics Club '40; B. Y. P. U. '40; Pep Squad '40.



The SOPHOMORES

ANNETTE HOLLEY Gulfport, Miss.

"Roxie"
Y. W. C. A. '40, '41; Spanish Club '41; Episcopal Club '41; Cutest Couple (Girl) '41.

ANNABELLE HOLSTON Wiggins, Miss.

"A. B."
Y. W. C. A. '40, '41; "P" Club '40, Vice-President '41; Home Economics Club '40; Social Arts Club '41; B. Y. P. U. '40.

THOMAS HOWELL Howison, Miss.

"T. Henry"
Y. M. C. A. '40, '41; Glee Club '40; French Club '41; Wesley Foundation '40, President '41; Agriculture Club '40; President, Camera Club '41.

BILLIE RUTH JENKINS Gulfport, Miss.

"Bill"
Commercial Club '40, Secretary '41; Y. W. C. A. '40; Secretary '41; Wesley Foundation '40, '41; Phi Theta Kappa '41; I. R. C. '41; Reporter Sophomore Class.

JUDSON B. JOHNSON Saucier, Miss.

"Jud"
Agriculture Club '40, '41; Y. M. C. A. '40, '41.

MADELINE KULJIS Biloxi, Miss.

"Manda"
I. R. C. '40, '41; Y. W. C. A. '40, '41; Catholic Club '40, '41; Pep Squad '40, '41; Homecoming Court '40, '41; Stardust Ball Court '40.

EDMUND LEE Jackson, Miss.

"Skeeter"
I. R. C. '40, '41; Commercial Club '41; Y. M. C. A. '40, '41; Presbyterian Club '40, '41; Phi Theta Kappa '40, '41; State Exam. Bookkeeping.

MARY JOYCE LEE Lyman, Miss.

Y. W. C. A. '40, Cabinet '41; B. Y. P. U. '41; Commercial Club '41; Wesley Foundation '40.

ELIZABETH LEMON Ocean Springs, Miss.

"Libby"
Phi Theta Kappa '40, '41; Y. W. C. A. '40, '41; I. R. C. '40; Presbyterian Club '40, Secretary '41; State Exam. Bookkeeping.

HERBERT HARRISON LOWERY Gulfport, Miss.

Y. M. C. A. '40, '41; Wesley Foundation '40, '41; Commercial Club '41; Camera Club '41; I. R. C. '41; Agriculture Club '41.

DOLORES McHENRY McHenry, Miss.

"De"
Y. W. C. A. '40, Cabinet '41; Wesley Foundation Cabinet '40, '41; French Club '40, '41; Band '40, '41; Glee Club Secretary-Treasurer '40; Pep Squad '40; Stardust Ball Court '40; Carnival Ball Court '41; I. R. C. '41; Camera Club Treasurer '41; Tennis Team '41; State Exam. Chemistry.

HUBERT MANNING New Orleans, La.

"Roxey"
Catholic Club '41; French Club '41; Y. M. C. A. '40, '41; Cheerleader '40, '41; Cutest Couple (Boy) '41.

JANIE ELIZABETH MILLS Lyman, Miss.

"Jennie"
Y. W. C. A. '40, '41; Commercial Club '41; Pep Squad '40; B. Y. P. U. '40, '41; Basketball '40; State Exam. Psychology.

VIVIAN MILLS Lucedale, Miss.

"Viv"
Y. W. C. A. '40, Cabinet '41; Home Economics Club '40; Social Arts Club Secretary '41; B. Y. P. U. '40, '41; State Exam. Psychology.

HELEN RAY MOORE Wiggins, Miss.

Y. W. C. A. '40, Vice-President '41; B. Y. P. U. '40, '41; Spanish Club '40, '41; Pep Squad '40, '41; State Exam. Education.

DONALD NELSON Waveland, Miss.

SHIRLEY O'NEAL Perkinston, Miss.

Y. W. C. A. '40, '41; B. Y. P. U. '40, '41; "P" Club '40, Secretary '41; Basketball '40; Home Economics Club '40; Social Arts Club Treasurer '41; Phi Theta Kappa '41; I. R. C. '41; State Exam. Home Economics.

WINSTON O'NEAL Saucier, Miss.

"Amos"
Y. M. C. A. '40, '41; I. R. C. '40, Secretary '41; Phi Theta Kappa '40, '41; Wesley Foundation '40, '41; French Club '40, '41; State Exam. History.

HAROLD OVERTON Vancleave, Miss.

Y. M. C. A. '40, '41.

GEORGE PATENOTTE Pass Christian, Miss.

HERMAN POLANSKY Bronx, New York

Track '38, '40; "P" Club '40.

EUGENE J. POLLOCK New Orleans, La.

"Gene"
Y. M. C. A. '40; Catholic Club '41; Camera Club '41.

HOWARD POLLOCK New Orleans, La.

Phi Theta Kappa '40, National President '41; Track Captain '40, Co-Captain '41; State High Jump Champion '40; Cheerleader '40, '41; "P" Club '40, Secretary-Treasurer '41; Catholic Club President '40, Vice-President '41; Vice-President Sophomore Class '41; Student Council '40, Vice-President '41; Y. M. C. A. '40, '41; Glee Club '40; Camera Club '41; 7 years attendance at Perkinston.

DOROTHY ELLEN RAMSAY Wiggins, Miss.

"Dot"
Home Economics Club '40; Social Arts Club Vice-President '41; Y. W. C. A. '40, '41; I. R. C. '41.

STANLEY RATOMSKY Bronx, New York

"Rummy"
Track '38, '40, '41; "P" Club '40, '41; I. R. C. '41; Y. M. C. A. '40, '41; Catholic Club Treasurer '40, '41; Social Committee '41.

DONALD ROBERTS Gulfport, Miss.

"Duck"
Y. M. C. A. '40, President '41; Agriculture Club Treasurer '41; B. Y. P. U. '41.

NAOMI IONE ROBERTS Pascagoula, Miss.

"T. T."
Wesley Foundation '40, '41; Y. W. C. A. '40, '41; Pep Squad '40, '41; Glee Club '40; Commercial Club '40; Camera Club '41; Home Economics Club '40; Social Arts Club '41; Freshest Freshman '40.

THOMAS ROBERTS Biloxi, Miss.

"Tommy"
Y. M. C. A. '40, '41; Camera Club '41; Track '41; Basketball '41; B. Y. P. U. '41.



The SOPHOMORES

GASTON ROBERTSON..... Gulfport, Miss.
"Frost"
Y. M. C. A. '40, '41; French Club '40, '41; B. Y. P. U. '40, '41.

HERNAN F. ROSSI..... San Jose, Costa Rica
Catholic Club '40, '41; Agriculture Club '40, '41; Phi Theta Kappa '41; Spanish Club '40; Y. M. C. A. '40, '41; State Exam. Trigonometry.

EARL ROUSE..... Pascagoula, Miss.
"Bullrat"
I. R. C. '41; Spanish Club '41; Band '41; Wesley Foundation '41; Y. M. C. A. '41; Camera Club '41; State Exam. History.

CHESTER EDWARD RUFFIN..... Greenville, Miss.
"Bullet"
Track '40, '41; Y. M. C. A. '40, '41; Phi Theta Kappa '41; I. R. C. '40, '41; Wesley Foundation '41; Dramatic Club '40, '41; Social Committee '41; Student Council '41; Commercial Club '41; Best Dressed Boy '41.

ALBERT SAUCIER..... Gulfport, Miss.
"Jerk"
I. R. C. '41; Y. M. C. A. '40, '41; Band '40, '41; Commercial Club '41; Orchestra '40, '41; Camera Club '41.

MARGARET SCARBROUGH..... Saucier, Miss.
"Tig"
Y. W. C. A. '40, '41; Commercial Club '40, '41; Wesley Foundation '41; Pep Squad '40.

CLARE SEKUL..... Biloxi, Miss.
Catholic Club '40, '41; Spanish Club '40, '41; Commercial Club '41; Y. W. C. A. '40, '41; Best Girl Dancer '41; State Exam. Government; Dean of Women, Student Government.

JEANETTE SHAW..... Lyman, Miss.
Catholic Club '40, '41; Y. W. C. A. '40, '41.

JEWELL SIMS..... Pass Christian, Miss.
Band '40, '41; Glee Club '41; Y. W. C. A. '40, '41; B. Y. P. U. '40; Episcopal Club '41; Home Economics Club '40; Social Arts Club '41; State Exam. Home Economics.

EWELL SINGLETON..... Gulfport, Miss.
Band '40, '41; Orchestra '40, '41; Commercial Club '41; Y. M. C. A. '40, '41; Dramatic Club '41; Debate Club '41.

BEULAH SMITH..... Lumberton, Miss.
"Puss"
Basketball '40; Y. W. C. A. '40, '41; B. Y. P. U. '40, '41; Tennis Team '41; Pep Squad '40, '41.

LUCEIL ELIZABETH SMITH..... Wiggins, Miss.
"Lucy"
B. Y. P. U. Secretary-Treasurer '41; Commercial Club '40, '41; Dramatic Club '40, President '41; Annual Staff '40, Associate Editor '41; Y. W. C. A. '40, Cabinet '41; Pep Squad '40; I. R. C. '40, Treasurer '41.

EMILIE MARIE STAPP..... Wiggins, Miss.
"Em"
Glee Club '40; Carnival Ball Court '41; French Club '40, '41; Y. W. C. A. '40, '41; Wesley Foundation '40, Cabinet '41; Dramatic Club '40, Treasurer '41; Phi Theta Kappa '41; Band '40, Reporter '41; I. R. C. '41; State Exam. History.

VONCILE STEWART..... Wiggins, Miss.
"Vonnice"
Y. W. C. A. '40, '41; B. Y. P. U. '40, '41; I. R. C. '40, '41; Dramatic Club '40, '41; Glee Club '40; Pep Squad '40; State Exam. English.

R. L. STIEFVATER..... Batavia, New York
"Dick"
Y. M. C. A. '40, '41; Basketball '41; Glee Club '40, '41; Baseball '41.

CHARLES STREECK..... Gulfport, Miss.
Agriculture Club '40, '41; Glee Club '40; Y. M. C. A. '40, '41.

BRADLEY STRIBLING..... Gulfport, Miss.
Y. M. C. A. '40, '41; Orchestra '40, '41; Wesley Foundation '41; Dramatic Club '41.

AGATHA JUACE TANNER..... Wilmer, Ala.
"Little Girl"
Y. W. C. A. '40, President '41; B. Y. P. U. Secretary '40, President '41; Home Economics Club '40; Social Arts Club '41; Pep Squad '40, '41.

GRACE TAYLOR..... Pontotoc, Miss.
"Gracie"
B. Y. P. U. '40; French Club '41; Y. W. C. A. '40, '41.

MAX TELHIARD..... Biloxi, Miss.
Band '40, '41; Orchestra '41.

ROBERT TIMS..... Gulfport, Miss.
"Topp"
Student Council '41; Y. M. C. A. '40, '41; President, Presbyterian Club '41; Glee Club '41; Social Committee '41; Phi Theta Kappa.

STEWART TRAUTMAN..... Gulfport, Miss.
"Stewey"
Band '40, '41; French Club '40; Y. M. C. A. '40, '41; Presbyterian Club '40, '41; Track '40, '41; "P" Club '40, '41; Camera Club '41.

SAMUEL H. TUCKER..... Perryville, Maryland
"Sam"
Y. M. C. A. '40, '41; "P" Club '40, '41; Dramatic Club '40, '41; Presbyterian Club '40; Annual Staff '40, '41.

ALVIN WALKER..... Mississippi City, Miss.
"Chug"
Agriculture Club '40, Secretary '41; Y. M. C. A. '40, '41; Wesley Foundation '40, '41; State Exam. Dairying.

THURLOW WALKER..... Perkinston, Miss.
Football '40, '41; "P" Club '40, '41; Agriculture Club '40, President '41; Student Council '40, President '41; Phi Theta Kappa '40, President '41; Y. M. C. A. Secretary-Treasurer '40, '41; I. R. C. '40, '41; Most Popular Boy '41; Most Versatile Boy '41; Friendliest Boy '41; Student Most Likely to Succeed '40; State Exam. Dairying.

JOHN ALEXANDER WELCH..... Biloxi, Miss.
"Buddy"
Wesley Foundation '40, Vice-President '41; Y. M. C. A. '40, Cabinet '41; Band '40, '41; Orchestra '41; Debate Team '41; State Exam. History.

JAMES CHARLES WITTMANN..... Pass Christian, Miss.
"Jimmy"
I. R. C. '41; Camera Club '41; Commercial Club '41; Catholic Club '40, '41; Y. M. C. A. '41; State Exam. History.

KENNETH V. WOODWARD, Jr. Long Beach, Miss.
"Skinny"
Y. M. C. A. '40, '41; Agriculture Club '40, '41; Presbyterian Club '40, '41.





OFFICERS

President
JOHN LONGEST

Vice-President
TOM BUSH

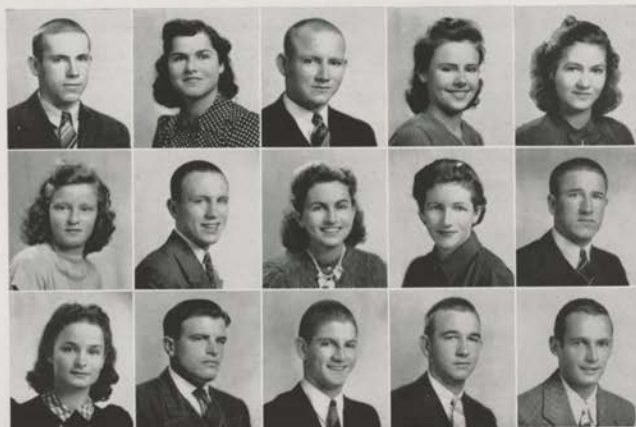
Secretary-Treasurer
ELENA MAY CURTIS

Reporter
LAURA ALICE RUSS

The FRESHMEN

An eager Freshman Class has set a pace toward success, all hoping to be one step nearer their goal as they return to "Perk" for another year.





The F R E S

EDWARD ALLEN.....Bexley, Miss.
Presbyterian Club; Y. M. C. A.; Agriculture Club.

WINNIE LOUISE ALLEN.....Bexley, Miss.
Social Arts Club; Pep Squad; Presbyterian Club;
Y. W. C. A.

T. D. ALLEN.....Bexley, Miss.
Presbyterian Club; Y. M. C. A.; Agriculture Club.

MELIONEE ETURA ALLEN.....Lucedale, Miss.
Glee Club; Social Arts Club; B. Y. P. U.; Y. W. C. A.

ALBERTA ARGUELLAS.....Biloxi, Miss.
Band; Catholic Club.

BETH BAILEY.....Lucedale, Miss.
"Little Red"
Social Arts Club; Pep Squad; B. Y. P. U.; Y. W. C. A.

ORION BAKER.....Ocean Springs, Miss.
"Obie"
Catholic Club.

ERIS BATES.....Wiggins, Miss.
Commercial Club; Pep Squad; Y. W. C. A.

BEVERLEY B. BEGGS.....Biloxi, Miss.
"Bebe"
French Club; Glee Club; Episcopal Club; Y. W. C. A.

VIRGIL BILBO.....Pascagoula, Miss.
"Bud"
Y. M. C. A.

LOIS BLACKLEDGE.....Gulfport, Miss.
"Chubby"
Glee Club; Commercial Club; Y. W. C. A.; Wesley
Foundation; Carnival Ball Court.

JOHN BLEUER.....Biloxi, Miss.
"Crooner"
Y. M. C. A.; Episcopal Club.

ROBERTS BODDEN.....Pascagoula, Miss.
Y. M. C. A.; Presbyterian Club; State Exam. History.

OSCAR L. BOND.....Wiggins, Miss.
Y. M. C. A.; B. Y. P. U.; State Exam. Chemistry.

FRANK BONILLA.....Central America



H M E N

CORINA ALLEN BOONE.....Mobile, Ala.
"Connie"
Social Arts Club; Pep Squad; I. R. C.; Glee Club;
Episcopal Club; Y. W. C. A.

FLORENCE BOYER.....Biloxi, Miss.
Band; Social Arts Club; Camera Club; Commercial
Club; Dramatic Club; Catholic Club; Y. W. C. A.;
Social Committee.

FRANCES BURKE.....Gulfport, Miss.
Y. W. C. A.

DOROTHY BURKETT.....Hattiesburg, Miss.
Wesley Foundation; Y. W. C. A.; Secretary-Treasurer
Band.

TOM BUSH.....Little Rock, Ark.
Vice-President; Freshman Class; French Club; Camera
Club; Y. M. C. A.; Wesley Foundation; State Exam.
French.

MARY ELEANOR BUSSE.....Danville, Ky.

HELEN CAIN.....Mississippi City, Miss.
Commercial Club; Camera Club; Wesley Foundation;
Y. W. C. A.

IRIE CARNLEY.....Lucedale, Miss.
Y. M. C. A.; Basketball; "P" Club.

BERNICE CARTER.....Escatawpa, Miss.
"Bunny"
Camera Club; Pep Squad; B. Y. P. U.; Y. W. C. A.

ELENA MAY CURTIS.....Biloxi, Miss.
Glee Club; Dramatic Club; Social Arts Club; Annual
Staff; Catholic Club; Y. W. C. A.; Most Courteous
Girl; Secretary-Treasurer Freshman Class.

MAY DAVENPORT.....Mobile, Ala.

ANNIE MARIE DAVIS.....Vicksburg, Miss.
Dramatic Club; Band; Y. W. C. A.

EARL DIAMOND.....Saucier, Miss.
"Johnny"
Agriculture Club; Glee Club.

DOROTHY DOW.....Jackson, Miss.

SAMUEL A. EATON.....New Orleans, La.
Y. M. C. A.



The F R E S

ELIZABETH ELOISE ELSTON, Gulfport, Miss.
"Betty"

Band; Y. W. C. A.; Commercial Club; I. R. C.; Presbyterian Club.

LEWIS ELSTON, Gulfport, Miss.

"Pete"
Treasurer, Presbyterian Club; French Club; Y. M. C. A.; Phi Theta Kappa; Annual Staff; I. R. C.; State Exam. French.

ALVARO FACIO, San Jose de Costa Rica

"Al"
Catholic Club; Spanish Club; Y. M. C. A.

MARIO FACIO, San Jose de Costa Rica

Catholic Club; Spanish Club; Y. M. C. A.

JOSEPH L. FRIES, Bronx, New York

"Joe"
Football; Track; "P" Club; Catholic Club; Y. M. C. A.

CORRIE GADDY, Gulfport, Miss.

Phi Theta Kappa; I. R. C.; Commercial Club; Y. W. C. A.

HILDA GRACIAS, Guatemala City, Guatemala

Catholic Club.

JEAN GRAVES, Hazelhurst, Miss.

Commercial Club; Glee Club; Pep Squad; Y. W. C. A.

JUNE MARIE HAMILTON, Gulfport, Miss.

Social Arts Club; Y. W. C. A.

DOROTHY HATTEN, Wiggins, Miss.

"Dot"
Social Arts Club; Pep Squad; Y. W. C. A.

J. D. HATTEN, Wiggins, Miss.

ANNIE GERTRUDE HIGHSMITH, Long Beach, Miss.

Commercial Club; Pep Squad; Presbyterian Club; Y. W. C. A.

HAZEL VALREADA HOBBY, Merrill, Miss.

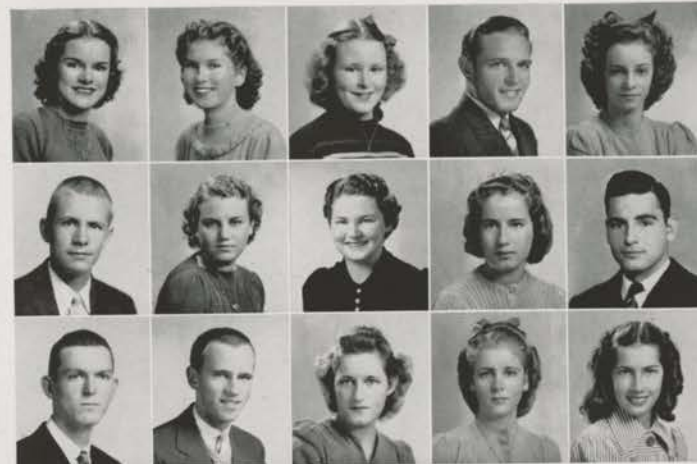
Pep Squad.

JESSE BOYCE HOLLEMAN, Wiggins, Miss.

Debate Team; Dramatic Club; French Club; Y. M. C. A.; Annual Staff; State Oratorical Contest.

GLADYS HOYLE, Gulfport, Miss.

Commercial Club; I. R. C.; Phi Theta Kappa; B. Y. P. U.; Y. W. C. A.



H M E N

MURIEL HUTCHINS, "Peg"

SIBYL GRACE JOHNSON, Saucier, Miss.

Pep Squad; Wesley Foundation; Y. W. C. A.

GLORIA KELLER, Biloxi, Miss.

Commercial Club; Y. W. C. A.; Social Arts Club; Pep Squad.

CLLETT KEMP, Mobile, Ala.

PATRICIA KINCH, Lucedale, Miss.

"Pat"
Social Arts Club; Pep Squad; Y. W. C. A.; Wesley Foundation.

ELROY RALPH KRESTENSEN, Gulfport, Miss.

"Hawaii"
Band; Y. M. C. A.; Agriculture Club.

LORA LADNER, Saucier, Miss.

Social Arts Club; B. Y. P. U.; Y. W. C. A.

WALLINE LADNER, Perkinson, Miss.

Social Arts Club; Pep Squad; B. Y. P. U.; Y. W. C. A.

GLADYS LASSERE, Long Beach, Miss.

LISSE LAWRENCE, Pineville, La.

Football; Track; "P" Club; Y. M. C. A.; Catholic Club.

JOHN CHRIS LONGEST, Biloxi, Miss.

President, Freshman Class; Student Council; Y. M. C. A.; Vice-President, B. Y. P. U.; I. R. C.; French Club; Phi Theta Kappa; State Exam. French.

JOHN JOSEPH LOZES, Pass Christian, Miss.

Commercial Club; Catholic Club; Camera Club; Y. M. C. A.; Phi Theta Kappa; I. R. C.

NELLIE RUTH MAINER, Biloxi, Miss.

"Horse"
Glee Club; Y. W. C. A.

PANSY McBAY, Lucedale, Miss.

Commercial Club; Camera Club; Band; Catholic Club; Wesley Foundation; Y. W. C. A.

DOROTHY MOORE, Grand Bay, Ala.

"Dot"
Chorleader; Camera Club; Commercial Club; Dramatic Club; Wesley Foundation; Y. W. C. A.; Annual Staff.



The F R E S

INA MORAN.....Long Beach, Miss.
C. E. MURPHY.....Vanceleave, Miss.
"Duck"
Agriculture Club; State Exam. Field Crops.
WILLIAM NEWSUM.....Biloxi, Miss.
"Bill"
Band; Y. W. C. A.; Wesley Foundation; Business Manager, Annual Staff.
WERLIN JAMES NIOLET.....Pass Christian, Miss.
Catholic Club; Camera Club; French Club; Y. W. C. A.
DIXIE OLIVER.....Houston, Texas
"Dixie Babe"
Camera Club; Spanish Club; Glee Club; Catholic Club; Y. W. C. A.; Most Typical Freshman.
FLORZAN OSZUSCIK.....Michigan City, Ind.
"Suzie"
Football; Episcopal Club.
MARYANNE PASSMORE.....Dallas, Texas
"Hoochie"
Commercial Club; Catholic Club; Secretary, Camera Club; Pep Squad; Phi Theta Kappa; Annual Staff.
DOY EVELYN PAYNE.....Gulfport, Miss.
President, French Club; Spanish Club; I. R. C.; Wesley Foundation; Y. W. C. A.; Phi Theta Kappa.
DOROTHY PIGFORD.....Meridian, Miss.
"Dot"
Catholic Club; Social Arts Club; Y. W. C. A.

H. Y. QUARLES.....Wiggins, Miss.
"Country"
ERNESTO QUIROS.....San Jose de Costa Rica
"Neto"
Spanish Club; Catholic Club; Y. M. C. A.
JAMES JOSEPH RADY.....Pensacola, Fla.
"Jimmy"
Catholic Club; Y. M. C. A.
LOUISE RANDALL.....Gulfport, Miss.
"Legs"
Commercial Club; Y. W. C. A.; Wesley Foundation; Glee Club; Phi Theta Kappa.
AUDREY RAY.....Gulfport, Miss.
"Little Audrey"
Spanish Club; Commercial Club; Wesley Foundation; Y. W. C. A.
MARTHA ANN REESE.....Mobile, Ala.
Y. W. C. A.
DOT ROBERTS.....Moss Point, Miss.
Pep Squad; Commercial Club; Y. W. C. A.
LAURA ALICE RUSS.....Gulfport, Miss.
Secretary-Treasurer, Wesley Foundation; Phi Theta Kappa; French Club; Y. W. C. A.
JEAN SAUNDERS.....Orange Grove, Miss.
Commercial Club; Y. W. C. A.; I. R. C.; Glee Club; Wesley Foundation; Pep Squad.



H M E N

MARGARET SCOTT.....Gulfport, Miss.
Y. W. C. A.
GERTRUDE SCRUGGS.....Biloxi, Miss.
Secretary, Y. W. C. A.; President Social Arts Club.
BETTY PAGE SEAY.....Ocean Springs, Miss.
Band; Y. W. C. A.
DAVID SHATTLES.....Daisy Vestry, Miss.
"Jack"
Basketball; "P" Club; Agriculture Club.
LOUISE SORRELS.....Gulfport, Miss.
"Tut"
French Club; Y. W. C. A.; Wesley Foundation.
ROY STRIPLING.....Bronx, New York
Track; Catholic Club; Y. M. C. A.
TAYLOR SWINDLE.....Leroy, Illinois
W. THOMAS SWINDLE.....Leroy, Illinois
"Tom"
Y. M. C. A.; Wesley Foundation.
BERTHA MAE TAYLOR.....Wiggins, Miss.

GLORIA THORNTON.....Greenville, Miss.
"Little Red"
Glee Club; Commercial Club; Y. W. C. A.; Best Dressed Girl; Wesley Foundation.
JOAQUIN VELASQUEZ.....Trujillo, Honduras
JOE VINDEL.....Honduras
DOROTHY WENTZELL.....Biloxi, Miss.
"Dot"
Band; Social Arts Club; Orchestra; Episcopal Club; Y. W. C. A.
INA WILSON.....Vanceleave, Miss.
Commercial Club; Y. W. C. A.; Wesley Foundation.
RUTH WINK.....Gulfport, Miss.
ANNA LUCEIL WOLEBEN.....Gulfport, Miss.
Annual Staff.
LILLIAN WRIGHT.....Gulfport, Miss.
"Tillie"
Commercial Club; Y. W. C. A.; Presbyterian Club; Glee Club.
FRED ZILLY.....Bronx, New York



OFFICERS

President LEROY WEEKS
Vice-President WILMA PROFFITT
Secretary-Treasurer DOROTHY DANTZLER
Reporter MARJORIE SHEPARD

The SENIORS

They have attained their immediate goal, yet they seek bigger fields. May graduation see them ready for their work toward a higher education.



OFFICERS

President MARY ELAINE BATSON
Vice-President FRED RAINEY
Secretary-Treasurer FRANCES LONG
Reporter FREDA LONG

The JUNIORS

Working hard to prepare themselves for their final year, the Juniors leave this year ready to greet the next with renewed determination.

HIGH SCHOOL SENIORS

FRANKLIN ABEL.....Gulfport, Miss.

BEMIS BAILEY.....Biloxi, Miss.
"Bob"

HILTON BOURNE.....Gulfport, Miss.
Football

LOIS BRELAND.....Perkinston, Miss.

ADOLPH BROWN.....Biloxi, Miss.
"Emick"
State Exam. Government

JARRY CARLIN.....Perkinston, Miss.

DOROTHY DANTZLER.....Bond, Miss.
Secretary-Treasurer Senior Class

MAX FERRERA.....Tela, Honduras

BYRD HOLLEMAN.....Beaumont, Texas
Band, Y. M. C. A.

JANEEN IVEY.....Shreveport, La.
Camera Club

ALBERTA JOHNSON.....Perkinston, Miss.

WILMA PROFFITT.....Johnson City, Tenn.
Pop Squad Leader, Annual Staff, Vice-President Senior Class, Tennis

JOHN ROBERSON.....Perkinston, Miss.

PHIFER ROTHMAN.....Biloxi, Miss.
State Exam. H. S. Chemistry

FRANK RUSSUM.....Perkinston, Miss.
Drum Major, Tennis, "P" Club, Band

MARJORIE SHEPARD.....Saucier, Miss.
"Mopsy"
Annual Staff, Band, Y. W. C. A., Tennis, "P" Club, Senior Class Reporter

BETTY THOMPSON.....Indianapolis, Ind.
Pop Squad Majorette, Y. W. C. A., Dramatic Club, B. Y. P. U., Home Economics Club, Commercial Club

LeROY WEEKS.....Perkinston, Miss.
"Sonny"
Tennis Team, Dramatic Club, "P" Club, State Exam. H. S. Economics, President Senior Class

C. L. YELVERTON.....Gulfport, Miss.
"Slick"



HIGH SCHOOL JUNIORS

JOE ANDERSON Gulfport, Miss.
"Spook"
Y. M. C. A., B. Y. P. U.

FRANCES LONG Memphis, Tenn.
Secretary-Treasurer Junior Class, Band

MARY ELAINE BATSON Wiggins, Miss.
President Junior Class, State Exam. Geometry

FREDA LONG Memphis, Tenn.
Reporter Junior Class, Band

DOROTHY BLEUER Biloxi, Miss.
"Sis"

HOMER McENIRY Handsboro, Miss.
"Mac"
Catholic Club, Camera Club

BERNICE BRELAND Perkinston, Miss.

HOWARD PARKER Perkinston, Miss.
"Scotty"

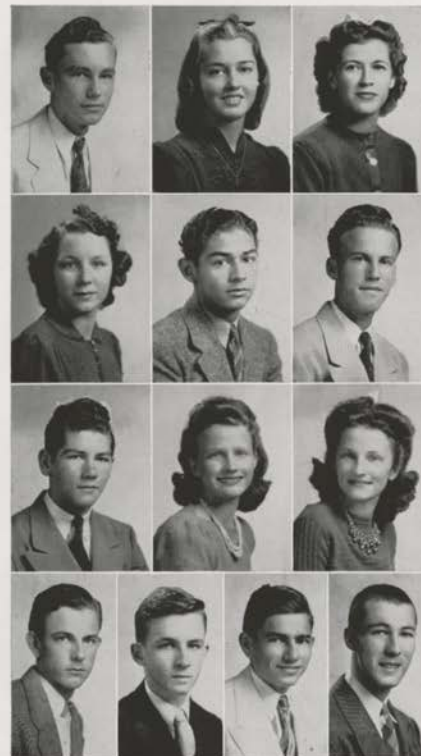
WILLIAM DOUBLEDAY Panama City, Panama
"Bill"
Catholic Club, Spanish Club

FRED RAINEY Pensacola, Fla.
"Dictator"
Y. M. C. A., Track, Vice-President Junior Class, State Exam. Trigonometry

ELMER LEE HAYES Wiggins, Miss.

DERWOOD LANGLEY Biloxi, Miss.
"Dagwood"

COLBERT SILVEY Scott, Miss.



A C T I V I T I E S





Top Row: Thurlow Walker, President; Howard Pollock, Vice-President; Pat Carolan, Secretary-Treasurer; Bessie Black, Sophomore Representative.
 Second Row: Chester Ruffin, Bobby Tims, Sophomore Representatives; Maryanne Passmore, John Longest, Freshman Representatives; Frank Russum, High School Representative.

STUDENT COUNCIL

The Student Council is the most democratic organization on the campus because it represents the entire student body. The Council consists of President, Vice-President, and Secretary-Treasurer from any division of the school; three council members are elected from the Sophomore college division; two from the Freshmen college division; and one from the High School division; all members elected by the student body.

The functions of the Student Council are: to create a co-operative spirit between the students and the faculty; to tend to all student business that pertains to the student body as a whole; to present any suggestions that will add to the school's credentials; and to be a general advisory group to the students.

SOCIAL RECREATION COMMITTEE

The purpose of the Social Recreation Committee is to make the social life of the campus more interesting and more enjoyable. The members of this committee are chosen by the student body. The committee sponsors all dances, and other social gatherings. The proceeds of these functions are used in preparation for the Farewell Dance which is given near the end of school.

First Row: Florence Boyer, Evelyn Hamilton, Maryanne Passmore.
 Second Row: Kermit Fredericks, Bradley Stribling, Robert Tims, Tom Bush.
 Third Row: Chester Ruffin, Stova Firth, Stanley Ratomsky, Haskew Page.





(In the picture from left to right)

Seated: Robert W. Cox, Editor; Bessie Clark, Associate Editor; Wilma Proffitt, Typist; Elena May Curtis, Freshman Reporter; Maryanne Passmore, Feature Editor; Lola Barrett, Associate Editor; Stova Firth, Sophomore Reporter; "Bill" Newsum, Business Manager.

Standing: Luciel Smith, Associate Editor; Dorothy Moore, Organizations Editor; "Pete" Elston, Freshman Reporter.

No Picture: Sam Tucker, Picture Editor; Boyce Holleman, Sports Editor.

ANNUAL STAFF

With best wishes always to our Alma Mater, the Perkulator Staff proudly presents its 1941 Annual. May it ever be a memento of your care-free college days, bringing happiness as the years roll by.

PHI THETA KAPPA

The Phi Theta Kappa is the honorary society of the junior college. The local chapter, known as Gamma Nu, is a member of the National Society of the Phi Theta Kappa.

The membership is limited to only the upper ten per cent of the student body. Their scholastic average must be at least a "B".

The aim of this organization is to promote scholarship, leadership and fellowship.

First Row: Dorothy Burkett, Rose DeMetz, Emily Marie Stapp, Eunice Conn, Corrie Gaddy, Laura Alice Russ, Maryanne Passmore, Winifred Batson.

Second Row: Doy Evelyn Paine, Louise Randall, Ella Favre, Walline Ladner, Gladys Hoyle, Lola Barrett, Margorie Batson, Billie Ruth Jenkins, Elizabeth Carrio.

Third Row: Edmund Lee, Thurlow Walker, Winston O'Neal, Ray Jeffcoat, Shirley O'Neal, John Longest, Elizabeth Lemon, "Pete" Elston, Wallace Sekul, Howard Pollock, John Lozes.

Fourth Row: Hernan Rossi, Philip Brandt, Mr. Sumner, Sponsor, Dannitte Gill, Robert Tims, Chester Ruffin, "Bill" Anderson, "Bob" Cox.





First Row: (Left to Right) Gloria Keller, Lois Blackledge, Melionee Allen, Annette Holley, Dolores McHenry, Betty Campbell, Emilie Marie Stapp, Ione Roberts, Gertrude Highsmith, Louise Sorrels, Juicce Tanner, President.
 Second Row: Clare Sekul, Gloria Thornton, Corina Boon, Anne Broadus, Beverly Boggs, Marjorie Ann Moore, Sybil Johnson, Katherine Burgess, Gladys Bosarge, Rose Louise DeMetz, Louise Randall, Cabinet.
 Third Row: Dorothy Ramsay, Shirley O'Neal, Dorothy Burkett, Vivian Mills, Cabinet; Margaret Scarbrough, Virginia French, Treasurer; Helen Cain, Norvell Bennett, Hazel Hobby, Jean Saunders.
 Fourth Row: Ella Pavre, Leo Campbell, Betty Conn, Eunice Conn, Cabinet; Jennie Mills, Eris Bates, Audrey Ray.
 Fifth Row: Betty Elston, Helen Moore, Vice-President, Marie Davis, Annie Ruth Fairley, Walline Davis, Dorothy Fairley, Louise Allen, Jeanette Shaw, Dorothy Hatten, Lois Franke.
 Sixth Row: Janeen Ivey, Elizabeth Lemon, Lola Mae Barrett, Cabinet; Annabelle Holston, Voncile Stewart, Mary Elaine Batson, Margie Shepard, Cabinet; Dorothy Roberts.
 Seventh Row: Joan Russell, Laura Alice Russ, Cabinet, Joyce Lee, Cabinet, Lucell Smith, Cabinet, Billie Ruth Jenkins, Secretary, Jean Graves, "Bunny" Carter.
 Eighth Row: Beth Bailey, Doy Evelyn Payne, Walline Ladner, Lora Ladner, Lenna Butler, Miss Haney, sponsor, Corrie Gaddy, Dorothy Moore, Cabinet, Ina Wilson.
 Ninth Row: Beula Smith, Patricia Kinch, Pansy McBay, Gladys Hoyle.

Y. W. C. A.

As members of the Y. W. C. A. we shall strive to dedicate . . .

Our souls to God;
 Our service to our fellow-beings;
 Our minds and our bodies to higher standards through worthwhile activities.

Catholic Club

The Catholic Club composed of both Catholic and non-Catholic students is a very active organization on the campus. This organization under the leadership of its president, "Pat" Carolan, has progressed rapidly this session; having as its object to promote a closer feeling of fellowship and to promote a happy spiritual outlook on life.

Meetings are held every Wednesday night and throughout the year Reverend Waters has conducted Mass on Sunday mornings.

First Row: Rose DeMetz, Joan Russell, Betty Campbell, Dora Ellen Hanson, Maryanne Passmore.
 Second Row: Charles Carroll, Pat Carolan, Carlos Herrera, Howard Pollock.
 Third Row: Mr. Felecione, Sponsor, Elena May Curtis, Charles DeMetz, Dixie Oliver, Ann Beckham.
 Fourth Row: Stanley Flotte, James Wittmann, Wallace Sekul, Elizabeth Carrio, Frank Gruich.
 Fifth Row: John Lozes, Stanley Ratomsky, Clare Sekul, Max Telhair, Werlin Niolet.





First Row: Zeak Thach, Donald Roberts, President, Thurlow Walker, Secretary-Treasurer, Charles Streeck, Winston O'Neal, Vice-President, Hubie Manning, Bradley Stripling, Stanley Flotte, Edmund Lee.

Second Row: Mr. Gregory, Sponsor, Em Reynolds, "Billy" Elam, Boyce Holleman, John Welch, George Grace, Tom Bush, "Tommy" Roberts, "Joe" Fries, Harvey Byrd, "Bob" Cox, Elroy Krestensen, Edwin Burt, Samuel Eaton.

Third Row: Glenn Kemp, John Smith, Earl Rouse, James Wittman, Stanley Ratomsky, Chester Ruffin, Stewart Trautman, Oscar Bond, Eugene Pollock, "Bobby" Tims, Raybon Freridge, George Barrett, Herbert Lowery.

Fourth Row: Alvin Walker, Thomas Vogle, "Dick" Stapleton, Werlin Niolet, "Tom" Howell, David Galbraith, Philip Brandt, Gaston Robertson, Kenneth Woodward, Roy Stripling, "Pete" Elston.

Fifth Row: "Bill" Newsum, "Eddie" Baragolia, E. Allen, John Dambrink, Dannitte Gill, Charles Flickner, John Longest, John Lozes, Irie Carnley, Harold Wesson.

Y. M. C. A.

The Young Men's Christian Association of Perkinson is a union of students and faculty members for the following purposes:

- To lead students to faith in God through Jesus Christ;
- To lead them into membership and service in the Christian church;
- To promote their growth in Christian faith and character, especially.

International Relations Club

In nearly all the colleges and high schools in America there is a national organization, the International Relations Club. It is made possible by an endowment of Andrew Carnegie. This club is composed of students who have made an average of 85 in Social Studies. International problems and current events are discussed at meetings held twice a month.

First Row: Marjorie Ann Moore, Lola Barrett, Margie Batson, Corina Boon, Rose Louise DeMetz, Emille Marie Stapp, Dolores McHenry, Anne Broadus.

Second Row: Jean Saunders, Doy Evelyn Payne, State Vice-President, Gladys Hoyle, Corrie Gaddy, Lucell Smith, Treasurer, Billie Ruth Jenkins, Voncile Stewart, Elizabeth Carrio, Virginia French, Vice-President.

Third Row: Kermit Frederick, Hubert Manning, George Grace, Edmund Lee, Winston O'Neal, Secretary, Thurlow Walker, Stanley Ratomsky, Herbert Lowery.

Fourth Row: Earl Rouse, Thomas Vogle, James Wittmann, Mr. Sumner, Sponsor, John Chris Longest, Clyde McLeod, Lewis Elston.

Fifth Row: John Dambrink, Chester Ruffin, John Lozes, Frank Guich.





First Row: Rose DeMetz, Annette Holley, Ella Favre, Anne Broadus, Audrey Ray.
Second Row: Charles DeMetz, Doy Evelyn Paine, Betty Conn, Helen Moore, Miss Frazier, Sponsor, Clare Sekul.
Third Row: Earl Rouse, Philip Brandt, "Bill" Anderson, John Dambrink, Joan Russell.

SPANISH CLUB

The Spanish Club at Perkinston Junior College, which is composed of students from Latin America and students who are studying the Spanish language, has for its primary purpose the bettering of relations between the United States and her neighbors to the south.

It is felt a more common feeling and understanding will be accomplished through the learning of the language of the other, thereby drawing us closer together by removing the largest obstacle in our path. The students are joined in a sense of mutual interest and fellowship by discussions relative to the customs, backgrounds, problems, and characteristics of the native countries of each other.

French Club

The French Club is an active organization which is composed of the French students of Perkinston Junior College. Although not composed of the entire French class, the majority of the French students are members.

Its purpose is to study and learn in a friendly atmosphere more about France and its people. Every member is urged to take an active part in all the club activities in order to perpetuate the democratic spirit for which the club is known.

First Row: "Tom" Bush, Laura Alice Russ, Louise Sorrells, Evelyn Hamilton, Secretary, Bessie Clark, Treasurer, Stewart Trautman, "Billy" Elam.
Second Row: Charles Carroll, Julius Mladinich, Rose DeMetz, Wallace Sekul, Doy Evelyn Paine, President, Dolores McHenry, Emilie Marie Stapp, Pat Carolan, Miss Frazier, Sponsor, Tom Howell, John Longest.
Third Row: George Grace, Lowell Davis, "Pete" Elston, Winston O'Neal, Harvey Byrd, Gaston Robertson, George Barrett, Grace Taylor, Frank Gruich, Dannielle Gill.





First Row: Louise Sorrells, Dolores McHenry, Billie Ruth Jenkins, Emily Marie Stapp, Ione Roberts, Margaret Scarbrough, Audrey Ray.
Second Row: Tom Howell, President, Winston O'Neal, Tom Bush, Laura Alice Russ, Alvin Walker, John Welch, Vice-President, Lola Barrett, Dorothy Moore, Miss Gregory, Sponsor, Sibyl Johnson, Marjorie Ann Moore, "Pat" Kinch, Virginia French, Day Evelyn Faine.
Third Row: Earl Rouse, Harvey Byrd, Herbert Lowery, "Dick" Stapleton, George Barrett, Danmitte Gill, Bradley Stribling, "Billy" Elam, David Galbraith, "Bill" Newsum.

Wesley Foundation

The Wesley Foundation was organized here in 1937 and has developed to play a major part in the religious activities of the campus.

It is a religious club striving to uphold Christian ideals among the members and all those with whom it comes in contact. It serves as a place for students to express their Christian ideals with others.

B. Y. P. U.

Our motto in Baptist Young People's Union is: "All Baptist young people utilized." We study to show ourselves approved unto God, workmen that needeth not to be ashamed, rightly dividing the word of truth.

The officers are: Sponsor, Mr. Gregory; director, Harold Wesson; president, Juaine Tanner; vice-president, John Chris Longest; chorist, George Grace; Bible quiz leader, Donald Roberts; secretary, Luceil Smith; group captains, Lois Franke and Shirley O'Neil; pianist and Intermediate leader, Eunice Conn.

First Row: Lois Franke, Meliong Allen, Beth Bailey, Eunice Conn, Frances Long, Juaine Tanner.
Second Row: Walline Ladner, Lora Ladner, Helen Moore, Vivian Mills, Virginia Mills, Freda Long, Gladys Bosarge, Luciel Smith.
Third Row: George Grace, Donald Roberts, Shirley O'Neal, Walline Davis, Helen Beasley, Mr. Gregory, Sponsor.
Fourth Row: Harold Wesson, Oscar Bond, Stova Firth, Elton Brown, Gaston Robertson, Thurlow Walker.
Fifth Row: Irie Carnley, John Longest.





Top Row: Beverly Beggs, Bessie Black, Dot Bleuer, John Bleuer, Corina Boone, John Dambrink, President.
 Second Row: Ella Favre, Secretary and Treasurer, Annette Holley, Florian Oszusick, Jewel Sims, Vice-President, Dorothy Wentzell, Miss Truly, Sponsor.

Episcopal Club

The Episcopal Club was first organized at Perkinston during the school year 1939-1940. This club has now become one of the outstanding ones on the campus. The business consists of a religious service every Sunday evening by a reader and a service of Holy Communion on the second Wednesday of each month at which time the Reverend Warwick Aiken of Pass Christian, Mississippi, has charge of the service.

Under the able sponsorship of Miss Elsie Truly and the help of Mr. Raiford Sumner, the members have taken a lively interest in the club both years of its existence. It is the club's wish that it will be larger and still more active next year.

PRESBYTERIAN CLUB

The Presbyterian Club is a religious organization formed to bring the Presbyterian students closer together and to be a connecting link between the church and them.

The club meets twice a month, on Wednesday evenings, at 7:00 o'clock. One of these meetings is conducted entirely by the students; the other meeting is conducted by a speaker sent from Gulfport by Reverend J. N. Brown, of the First Presbyterian Church.

Row One: Stewart Trautman, Bobby Tims, David Galbraith.

Row Two: Betty Elston, Corrie Gaddy, Louise Allen, Edmund Lee.

Row Three: Mr. Hinton, Sponsor, Edward Allen, Elizabeth Lemon, Lewis Elston.





First Row: Tom Howell, President, Dolores McHenry, Maryanne Passmore, Secretary-Treasurer, Janeen Ivey, Mary Elaine Batson, Bernice Carter, Leo Campbell, Dorothy Moore, Ione Roberts, Pansy McBay.

Second Row: Herbert Lowery, Earl Rouse, Clayton Lehman, Charles DeMetz, "Tommy" Roberts, Tom Bush, "Billy" Elam, Julius Mladinich.

Third Row: John Lozes, Stanley Flotte, Werlin Niolet, Stewart Trautman, Eugene Pollock, Wallace Sekul, Frank Gruich, George Barrett.

THE CAMERA CLUB

The Camera Club was organized this year with the purpose of teaching students how to take, develop, and print pictures. Much progress has been made this year toward that purpose under the guidance of Mr. Ingram, the sponsor. Following years are expected to bring about much more progress in the club.

THE "P" CLUB

The purpose of the "P" Club is to create, maintain and sponsor a feeling of fellowship about the campus and the community in order to establish a stronger school spirit.

To be a member one must earn a letter in athletics and believe in the ideals the club proudly sponsors.

First Row: Howard Pollock, Bobby Thompson, John Edwards, Ernest Burns, Frank Russum, Pat Carolan, Lloyd Easterling, Virgel Baggett.

Second Row: Glenn Kemp, John Grace, Stewart Trautman, Thomas Alsobrook, H. T. Leake, Thuriow Walker, Milton Brown.

Third Row: Coach Rexinger, Joe Fries, LeRoy Weeks, Charlie Wilson, Albert Franklin, Ray Jeffcoat, Stanley Ratonsky, Rayburn Billard, Coach Brown.





First Row: Donald Roberts, Treasurer, Charles Streeck, Alvin Walker, Secretary, E. E. Burt, C. E. Murphy, Elton Brown, Edgar Scarborough, Harmon Johnson.
 Second Row: Thomas Vogle, T. D. Allen, Irvin Hamilton, Vice-President, John Diamond, Edward Broadus, Ray Redman, Kenneth Woodward.
 Third Row: Elroy Krestensen, Judson Johnson, E. Allen, Herbert Lowery, David Shattles, "Dick" Page, Albert Franklin, George Grace, Lou Campbell, Luther Lizana, LeRoy Shaw.

Agriculture Club

The purpose of the Agriculture Organization is to develop competent, aggressive, agricultural leadership, and to enable the students to select intelligently the agricultural occupation they intend to follow through life. The club strives to create a co-operative spirit among the students, to improve scholarship, and to encourage recreational activities among them.

SOCIAL ARTS CLUB

Under the able sponsorship of Miss Johnston, the club strives to uphold ideals of perfection in all social and domestic affairs.

First Row: Jewell Sims, Junice Tanner, Beth Bailey, Hilda Gracias, Ione Roberts, Melrose Allen, Florence Boyer, Dorothy Ramsay.
 Second Row: Marjorie Shepard, Helen Beasley, Corina Boon, Marjorie Ann Moore, Walline Davis, Lora Ladner, Virginia French.
 Third Row: Mary Elaine Batson, Louise Allen, Shirley O'Neal, Patricia Kinch, Vivian Mills, Walline Cowart, Walline Ladner.
 Fourth Row: Dorothy Wentzell, Elena May Curtis, Wenonah Hargrove, Dorothy Hatten, June Hamilton, Annabelle Holston, Lenna Butler.





First Row: Florence Boyer, Freda Long, Mary Elaine Batson, Ann Beckham, James Finley, Elizabeth Elston, Betty Page Seay, Ewell Singleton, "Jimmy" Blount, Lewis Ward, Charles Hartman, President, Max Telhaire, Frank Russum, Wilma Profiti, Jewell Sims.
Second Row: LeRoy Weeks, Marie Davis, Alberta Arguillas; Lowell Davis, "Buddy" Welch, Emily Marie Stapp, Pansy McBay, Mr. Beers, Director.
Third Row: Jack Dodge, Albert Saucier, Vice-President, Elroy Krestensen, Marjorie Shepard, Dora Ellen Hanson, Bessie Black, Dolores McHenry, Dorothy Burkett.
Fourth Row: Clayton Lehman, Earl Rouse, Dick Stapleton, Byrd Holleman, John Longest, Philip Brandt, Dorothy Wentzell, Edward Kern, "Billy" Elam.

BAND

The Perkinson Junior College Band, although not as large as last years, maintained its standing as one of the very best junior college bands in the state. Under the capable direction of Mr. Stanley Beers this organization strived to attain the highest playing ability that it possibly could. This year, instead of the usual Band Contest, a music festival was held. In this festival each of the Junior College Bands played a twenty-minute concert and were criticized, not judged, by a well-known musician.

ORCHESTRA

With Mr. Stanley C. Beers "jamming out" on his "slush pump" and the various other members of the orchestra "taking off" in splendid style, the orchestra has built a state wide reputation as a fine organization. It provides the music for all formal dances on the campus and entertains during formal dinners.

First Row: "Buddy" Welch, Saxophone; Charles Hartman, Clarinet; Max Telhaire, Saxophone; Edward Kern, Bass Viol.
Second Row: Albert Saucier, Trumpet; Bradley Stribling, Trumpet; Mr. Beers, Trombone; Miss Fulton, Piano.
Third Row: Ewell Singleton, Drums.





G
L
E
E

C
L
U
B

Top Row: Lawson Dietrich, President; Billy Elam, Vice-President; Miss Fulton, Director; Melionee Allen.
 Second Row: "Bill" Anderson, Beverly Beggs, John Bleuer, Anne Broadus.
 Third Row: Charles Carroll, Elena May Curtis, Virginia French, George Grace.
 Fourth Row: Jean Graves, Nellie Ruth Mainer, Dixie Oliver, Louise Randall, John Robertson.
 Fifth Row: Jean Saunders, Jewell Sims, Richard Stiefvater, Robert Tims, Lillian Wright.

The Glee Club, Miss Fulton directing and Miss Gregory accompanying, has provided the school with its usual fine entertainment this year.

Dramatic Club

It is the purpose of the Dramatic Club to provide entertainment for the students, both in the production and the presentation of their plays. The Club, ably headed by Miss Harriet Fulton, produced the delightful comedy hit, "Nothing But The Truth," and, "Highness," the Little Theatre Play, which was rated good by the judges.

The Dramatic Club is composed of a selected group of interested and talented students who wish to broaden their experience in the theatre.

First Row: Lucell Smith, Emilie Marie Stapp, Frances Long, Florence Boyer.
 Second Row: Anne Broadus, Dorothy Moore, Vencie Stewart, Elena May Curtis, Miss Fulton, Sponsor.
 Third Row: Frank Russum, Marie Davis, Lola Barrett, LeRoy Weeks, Ewell Singleton.
 Fourth Row: David Galbraith, Bradley Stribling, "Bill" Anderson, Chester Ruffin.





Top Row: Lola Barrett, president; Leo Campbell, vice-president; Ella Favre, secretary and treasurer; Miss Hart, sponsor; Mr. Felicione, sponsor; Eris Bates, Lois Blackledge. Second Row: Jesse Blackwell, Florence Boyer, Katherine Burgess, Helen Cain, Rose Louise DeMetz, Betty Elston, Stova Firth. Third Row: Stanley Flotte, Corrie Gaddy, Gertrude Highsmith, Gladys Hoyle, Billie Ruth Jenkins, Gloria Keller, Edmund Lee.

The COMMERCIAL CLUB

The Commercial Club is a reciprocal and pleasurable business club in which members work for mutual interest and professional advancement. The group of enthusiasts is composed of high school and college students studying commercial work. Its purpose is to be banded together for mutual helpfulness and the gain to be along the professional, educational, social, inspirational and recreational lines. Emphasis has been placed upon familiarizing students with the present business problems connected with accountants, stenographers, secretaries, and typists.

The guest speakers have given the members valuable knowledge of business and its requirements of the profession.



Top Row: Joyce Lee, Herbert Lowery, John Lozes, Pansy McBay, Jennie Mills, Dorothy Moore, Maryanne Passmore. Second Row: Louise Randall, Stanley Ratonsky, Audrey Ray, Dot Roberts, Chester Ruffin, Albert Saucier, Jean Saunders. Third Row: Margaret Scarbrough, Clare Sekul, Ewell Singleton, Luciel Smith, Gloria Thornton, Ina Sue Wilson, James Wittman, Lillian Wright.

IAL CLUB

Special recognition has been given to the following members of the Commercial Club because of their outstanding ability in the different fields of commercial work.

| | |
|-----------------------------------|-----------------|
| Best Typist..... | Ina Sue Wilson |
| Best Shorthand Student..... | Gladys Hoyle |
| Best in Secretarial Practice..... | Ella Favre |
| Best Law Student..... | Lola Barrett |
| Best Bookkeeping Student..... | Elizabeth Lemon |



BOOKKEEPING TYPING

SECRETARIAL PRACTICE SHORTHAND





The FEATURES

Feature Section CONTENTS

Campus King and Queen

who reigned with their court at the "Fiesta" Ball on March 10, 1941,
at 8:00 p.m.

Costume

Dukes Accompany Maids

Homecoming Queen and Court

who reigned at Homecoming on Saturday, October 16, 1940.

Informal

Who's Who on the Campus

in the various activities and personal traits.

As the "EYE" sees it.

An exhibition of some of the snaps taken by amateur photographers
on the campus.



Chester Ruffin and Marjorie Ann Moore

Campus KING and QUEEN

72



"Fiesta" Ball Court ♦ "Fiesta" Ball

and ANNUAL BALL

73

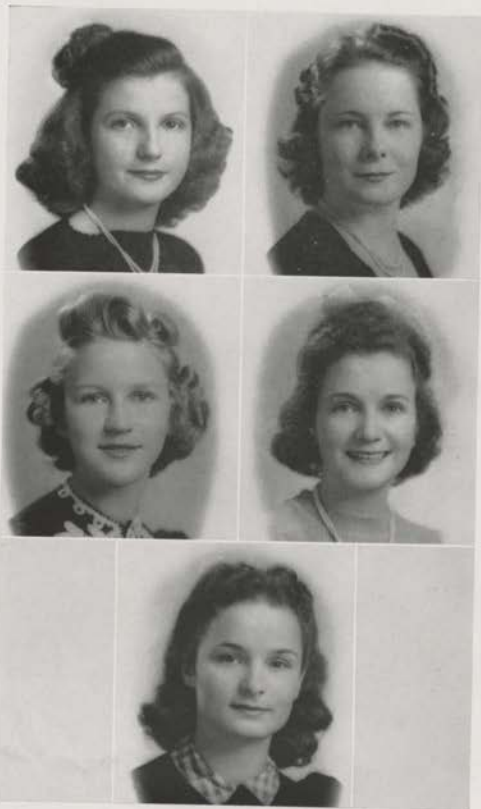
BESSIE CLARK

EMILY MARIE STAPP

DOLORES MCHENRY

ELENA MAY CURTIS

LOIS BLACKLEDGE



M A I D S

D U K E S



THURLOW WALKER

"BILL" ANDERSON

BRADLEY STRIBLING

HOWARD POLLOCK

"BOB" COX



Bessie Black

76
HOMECOMING QUEEN



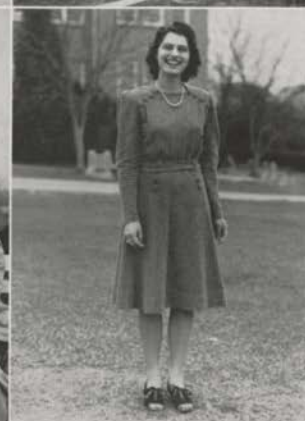
Bessie Clark
Madeline Kuljis

Dorothy Pigford
Betty Thompson

and her COURT
77

W H O'S

MARJORIE ANN MOORE
Prettiest Girl
ALBERT FRANKLIN
Friendliest Girl
ROSE LOUISE DEMETZ
Best Boy Athlete
CHARLES FLICKNER
Most Sophisticated Sophomore
Most Courteous Boy



ANNETTE HOLLEY AND
HUBERT MANNING
Cutest Couple
CLARE SEKUL AND "BOB" COX
Best Girl and Boy Dancers
CHESTER RUFFIN
Best Dressed Boy
LOLA BARRETT
Most Versatile Girl

W H O

W H O ' S

WILMA PROFFITT
Cutest Girl
ELENA MAY CURTIS
Most Courteous Girl
BESSIE CLARK
Most Popular Girl
MR. RAIFORD E. SUMNER
Best Liked Teacher



DIXIE OLIVER
Most Typical Freshman
GLORIA THORNTON
Best Dressed Girl
STOVA FIRTH
Most Handsome Boy
THURLOW WALKER
Most Versatile Boy
Most Popular Boy
Friendliest Boy

W H O

Snapshots

An unusual amount of interest in photography has developed on the campus this year aided by the newly founded Camera Club. To encourage these camera addicts, the Perkolator staff sponsored a contest, offering an annual for the best snapshot depicting student life.

The pictures on these four pages show a varied and interesting panorama of campus life. Homecoming, Mack's, the Bellingrath tour, the Band, and Pep squad, buildings, "Socializin'", cheerleaders, elections, teachers, Little Rex, and many others have painted the picture of "Perk" that we all will remember.



M O R E

Snap

S

H

O

T

S

84



PERKINSTON COACHES

A. I. Rexinger
Football
Baseball



J. O. Brown
Assistant Football
Basketball
Track



Elton Dalier
Girls' Intramural
Sports



ATHLETICS

FOOTBALL SQUAD

Football at "Perk" this year was full of surprises from start to finish. Defeated by less powerful squads, yet victorious over the conference leaders, the team gave its finest performance on Homecoming Day. The hard clean playing that was exhibited at every game shall cause us to remember this team.

None of us will forget the thrill the team gave us at Homecoming, nor the bloody battle at Ellisville. We hate to see the graduating members of the squad leave and go to other schools, yet we know that they leave with the knowledge that they were backed by the entire student body, win or lose. Skull drill, tiring scrimmages, and endless practice sessions had their reward at the end of each game.

First Row: Easterling, Manager; Sirmon, Shattles, Walker, Ostrom, Leake, Martin, Burns, Rimmer, Clark, Grace, Downs, Ritter, Manager.
Second Row: Brown, Manager; Bourne, Alsobrook, Fries, Arnold, Edwards, Oszusick, Lane, Broadus, Buckner, Kelly, Campbell, Brown, Manager.
Third Row: Coach Brown, Lawrence, Lashney, Flickner, Wilson, Dilliard, Franklin, Jeffcoat, Witt, Stevens, Rutherford, Beckett, Sager, Coach Rexinger.



HOMECOMING

89

The PLAYERS

THURLOW WALKER

E. W. CLARK

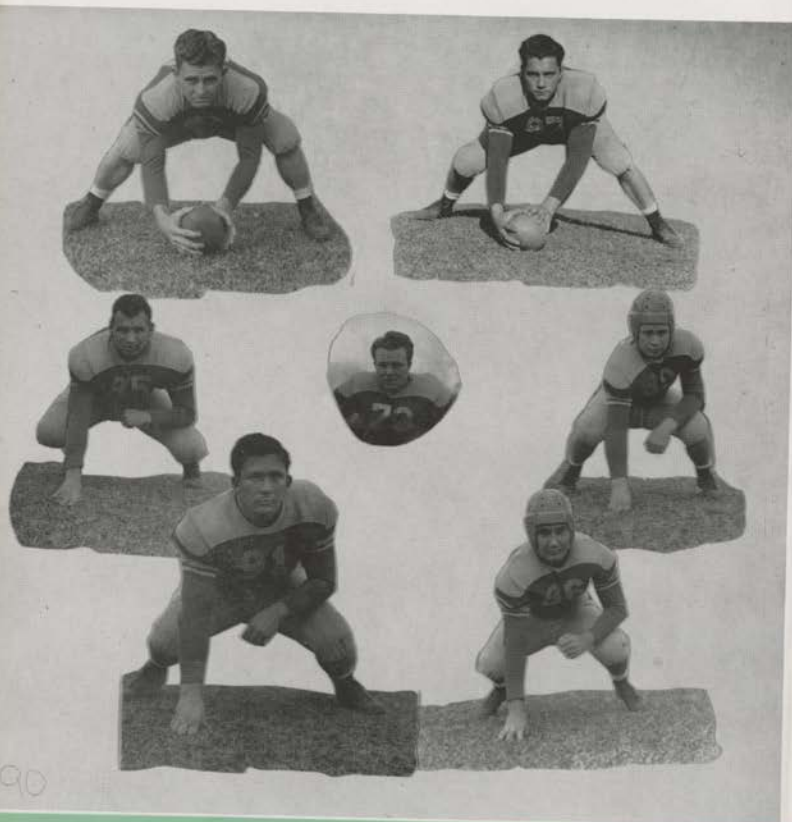
JOE FRIES

"LUM" EDWARDS

"DOC" STEVENS

"BULL" ARNOLD

"CHUFF" DILLIARD



ALBERT FRANKLIN

H. T. LEAKE

RAY JEFFCOAT

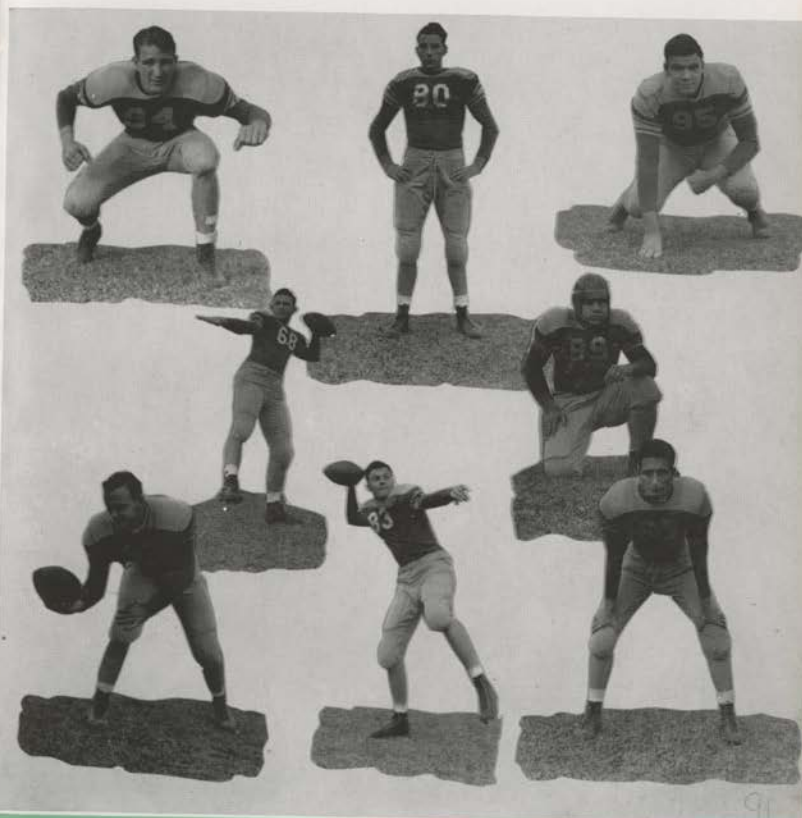
JOHN GRACE

"TINY" RUTHERFORD

THOMAS ALSOBROOK

CHARLIE WILSON

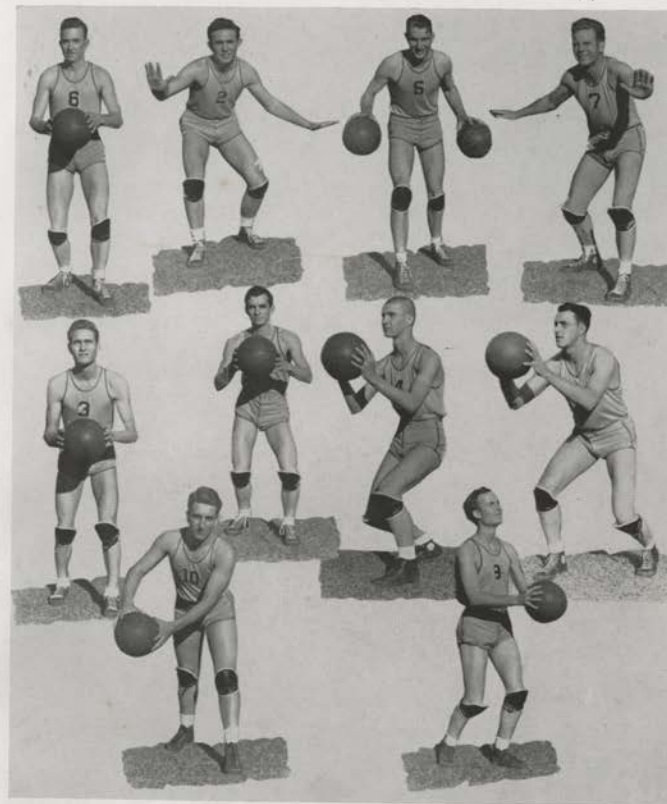
ERNEST BURNS



The CHEERLEADERS

Although Captain Franklin was the only letter man from last year's squad the team proved to be another of the famed spirited "Perk" fives. All members worked hard together, and it was not easy to pick the starting quintet on game night. We have reason enough to be proud of our team this year.

Hubie Manning, Alvaro Facio, Anne Broadus, Howard Pollock, Dorothy Moore, Mario Facio



BASKETBALL

David Shattles, John Grace, Albert Franklin, "Lou" Campbell, Irie Carnley, Jesse Blackwell, Harold Wesson, "Jim" Beckett, Edward Broadus, Thomas Vogle.

GIRLS' TENNIS

The girls' tennis team this year looks forward to a very successful season with the fine playing of each member. All four of the girls on the team have a good and strong game and will do their best in the matches they will participate in.

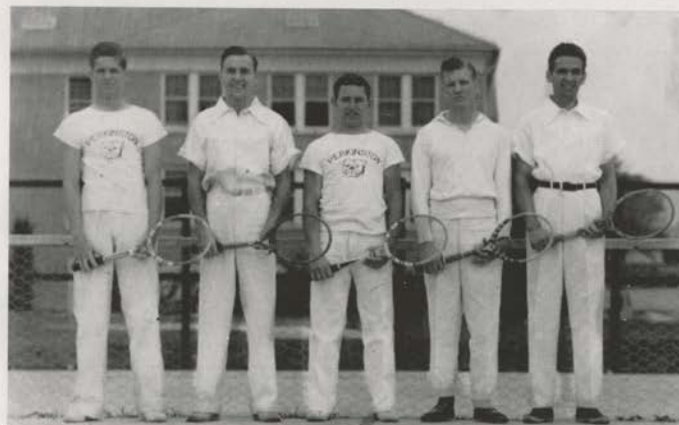
ELIZABETH DAMBRINK, WILMA PROFFITT, MARJORIE SHEPARD, DOLORES MCHENRY



BOYS' TENNIS

From the skill shown in the practice sessions here at home, the boys' tennis team should do very well this season. The team is composed of boys with experience, strong game, and excellent sportsmanship; all helpful in rounding out a fine game.

LEROY WEEKS, STEWART TRAUTMAN, FRANK RUSSUM, "BOBBY" THOMPSON, "BOBBIE" TIMS.



T R A C K

Coach "Obie" Brown has put out another of his good track teams this year. The team is made up mostly of new material, but so far, they have shown up very well. With the new men doing their best to earn places on the team, "Perk" is looking forward to the state track meet with high hopes.

First Row: Rainey, Raeburn, Manning, Batty, Trautman, Dietrich, Russum, Ritter, Manager: Easterling, Manager.
Second Row: Carolan, Roberts, Ruffin, Stripling, Lane, Galbraith, McLeod, Shattles Fries, Flickner, Kemp, Saucier, Page, Campbell, Coach Brown.



96

BASEBALL

Substituting a surprising amount of spirit and sportsmanship for the experience it lacks, this year's team has gained the popularity it deserves. Every boy has put his best into the game, eager to prove himself an able player.

With McLeod, Leake, Lane, and Broadus on the mound, the other members of the team have gathered their forces to establish a firm and steady support, and we are looking forward to one of the finest baseball records in quite some time.

First Row: Lane, Grace, Thach, Alsobrook, Leake, Martin, Edwards, Guich.
Second Row: Coach Rexinger, Brown, Manager: Beckett, McLeod, Stiefvater, Page, Wesson, LaCapra, Broadus, Brown, Manager.



97



Throughout the year the girls engage in various sports---in the Fall, volley ball, quoitennis, and soccer; in the Winter, basketball; and in the Spring, softball, tennis, archery, and recreational sports.

Basketball
Volleyball
Ping Pong
Shuffleboard





All students are given a physical examination, and restricted classes are provided for those students who are not physically able to participate in the regular classes.



Boys' classes play touch football, volleyball, basketball, softball, and recreational sports.

NO PICTURES

SOPHOMORES

| | | |
|-----------------------|-------------------|-------------------|
| Frank Bonilla | Mary Ann Lightsey | LeRoy Shaw |
| Philip Brandt | Luther Lizana | ✓ Otis Singletary |
| Elton Brown | Mason McIntyre | Mallett Sirmon |
| Milton Brown | Warren Moran | Phyllis Sherwood |
| Lenna Butler | Ottie Reeves | Carmen Tanner |
| Sara Frances Eldridge | Emmett Reynolds | Lagrone Tutor |
| Irvin Hamilton | Arnold Stevens | |

FRESHMEN

| | | |
|--------------------|--------------------|-------------------|
| Robert Arnold | ✓ Lloyd Easterling | Wallace Miles |
| Thomas Alsobrook | Melvin Ely | Julius Mladinich |
| Edwin Baragiola | Harold Eley | Robert Mosley |
| James Beckett | Kermit Frederic | Doris New |
| Norvell Bennett | Lois Franke | Harry Nelson |
| Dorothy Bertucci | John Grace | Joe Ostrom |
| Marguerite Blanton | Bert Holland | Haskew Page |
| Helen Bond | Wenonah Hargrove | Frederick Parker |
| Gladys Bosarge | William Harrison | Marion Risch |
| Edward Broadus | Charles Hartmann | John Rutherford |
| Floy Broadus | Billie Hubbard | B. H. Rimmer |
| Elizabeth Burns | Rosemary Harty | Ray Redmond |
| Morgan Buckner | Ray Jeffcoat | Juanita Rainey |
| Harvey Byrd | Harmon Johnson | Joan Russell |
| Cecil Byrd | Edward Kern | Arthur Sager |
| Louie Campbell | George Kelly | ✓ Wallace Sekul |
| Kenneth Carver | Glenn Kemp | Richard Stapleton |
| B. C. Clark | Clifford Kostmayer | Herbert Sirmon |
| Wallace Cowart | Edgar Lane | Edgar Scarbrough |
| Walline Cowart | H. T. Leake | John Smith |
| Marion Craig | John LaCapra | Bobby Thompson |
| Elizabeth Dambrink | Elton Lizana | Zeak Thach |
| Paul Dickerson | Jackson McInnis | Irmo Talbert |
| Paul Dodge | Clyde McLeod | Lewis Ward |
| Philip Davis | Hervey McLeod | Alice Whitefield |
| Raburn Dillard | Oscar McMurphy | ✓ Harold Wesson |
| Webber Downs | L. B. Martin | |

HIGH SCHOOL SENIORS

| | | |
|------------------|-----------------|-----------------|
| Thomas Backstrom | Aylwin Lachney | Andres Palencia |
| Millard Bond | Johnnie Loper | Charles Wilson |
| John Edwards | Richard McAlpin | |

Dear Diary

A year of pain and pleasure has passed into the void and we have only our memories to recall to us all the fun that has been experienced on this old campus. Let's see if we can remember a few of the high spots of this year at Perk.

SEPTEMBER 11 Classes begin--old friends greet and new friends meet.
Get Acquainted Dance was held tonight.

SEPTEMBER 22 Freshman initiation--more fun!

SEPTEMBER 25 Football season is in full swing.

OCTOBER 19.16 Homecoming!

NOVEMBER 18 Thanksgiving holidays--Home for the first time.

NOVEMBER 29 Dramatic Club Play--"Nothing But The Truth"

DECEMBER 6 Football Banquet--Remember?

DECEMBER 16 "The Messiah." It was wonderful.

DECEMBER 25 Christmas--And at home, too!

DECEMBER 27 And Chester Swor. That was an inspiration. The
Y. M. C. A. and Y. W. C. A. speaker.

JANUARY 22 Exams!! Enough said.

JANUARY 31 The House of David basketball game.

FEBRUARY 7-8-9 Band Clinic--Successful, to say the least.

FEBRUARY 12 The Ben Greet Players--"Is this a dagger I see before
me?"

FEBRUARY 21-22 IRC Trip to Ole Miss--Fun was had by all.

MARCH 11 The Senior play--"Oh Susan!"

MARCH 15 The annual trip to Bellingrath Gardens. Beautiful as
ever!

MARCH 17 Dr. Wiley and "Johnny Reb" visited us.

MARCH 18 The Little Theatre Contest Plays--"Highness" was good.

APRIL 3 The Sophomore play, "The Tin Hero." "Just as you
say, my love!"

APRIL 7 Dr. Ware's lecture in pictures.

APRIL 12 The Band Contest at Jackson and Easter holidays.

APRIL 25 Platform contests. Boyce won first place!

APRIL 27 Maryanne Passmore is elected national historian of Phi
Theta Kappa, and the next meeting is at Gulf Park.

APRIL 29 Junior-Senior picnic--some fun!

MAY 1 The Glee Club trips begin. "Pinafore" is a success!!

MAY 3 The Y. W. C. A. Camping trip. Who were those men??

MAY 10 The Y. M. C. A. Boat Trip to Ship Island.

MAY 17 The Freshman-Sophomore picnic.

MAY 22 The Style Show--Latest fashions on lovely ladies.

MAY 30 Miss Fulton's recital.

MAY 31 The Farewell Dance--"Parting is such sweet sorrow!"
And until next year, Dear Diary,--Adieu!!

Finis

OUR
PATRONS

**RIEMANN
FUNERAL HOME**

Phone 29-J
1718 25th Avenue
Gulfport, Mississippi

Compliments of
**PEARSON'S
CHEVROLET CO.**



SALES SERVICE
Wiggins, Mississippi

Mark Twain once asked a neighbor if he might borrow a set of books.

"You're welcome to read them in my library," replied the neighbor ungraciously, "but it is my rule never to let my books leave my house."

Several weeks later the same neighbor sent over to Mark Twain's house to borrow his lawnmower.

"Certainly," said Mark, "but since I make a rule never to let it leave my lawn, you will be obliged to use it there."

—M. E. A.

WILSON'S PHARMACY

THE PRESCRIPTION STORE

PHONE 23

Wiggins, Mississippi

**MARGARET'S
GULF COAST CANDIES**

Biloxi, Mississippi

Compliments of
STONE ICE CREAM CO.

Gulfport, Mississippi

Compliments of
**THE COAST
HARDWARE CO.**

Gulfport, Mississippi

WIGGINS DRUG STORE

SHEAFFER PENS AND PENCILS

Wiggins, Mississippi

Compliments of
**J. C. CLOWER
FURNITURE COMPANY**

"The Furniture Men"

Gulfport, Mississippi

Compliments of
**DODGE
PRINTING COMPANY**

Gulfport, Mississippi

Compliments of
Anderson's
MEN'S AND BOYS' WEAR

Gulfport, Mississippi

Compliments of
**M. SALLOUM
DEPARTMENT STORE**

Fourteenth Street
Gulfport, Mississippi

SALES STUDIOS

ANNUAL PHOTOS

By H. D. SALE

Gulfport, Mississippi

LORAIN FLOWER SHOP

COAST'S LEADING FLORIST

GULFPORT PASS CHRISTIAN

Phone 1959 - - - - - Phone 234

R. M. HENDRICKS

Manufacturers of
ACADEMIC CAPS AND GOWNS

State Representative of
HERFF-JONES JEWELRY CO.,
Largest Manufacturers of Class Pins, Invitations, and Personal Cards

Jackson, - - - - - Mississippi

1st Drunk: "Say, Buddy, can you tell me where McDougle lives?"

2nd Drunk: "Why, you're McDougle."

1st Drunk: "Yeah, I know, but I still want to know where he lives."

Red: "Guess who this is in three guesses or I'll kiss you."

Gladys: "George Washington . . . Jack Dempsey . . . Admiral Byrd."

**TRENTON
SUPPLY COMPANY**

HARDWARE, FARM MACHINERY
AND BUILDING MATERIALS

Wiggins, Mississippi

(Drunk searching for something under a street light.)

Sober: "Lose something, Bud?"

Drunk: "Yeah, fifty cents."

Sober: "Where'd you lose it?"

Drunk: "Down the street."

Sober: "Well, why don't you look down there for it, you know you'll never find it here."

Drunk: "Yeah, I know, but the light's better here."

Southern Coal Company, Incorporated

HIGH GRADE STEAM AND DOMESTIC COALS

General Office, Memphis, Tenn.

NEW ORLEANS - - - - - LOUISIANA

"If its coal the Southern has it"

Compliments of

DEES AND COMPANY

Perkinston, - - - - - Mississippi

Compliments of

PALACE PHARMACY

Phone 36 and 37

Pascagoula, Mississippi

**GULFPORT LAUNDRY &
CLEANING COMPANY**

DRY CLEANERS AND DYERS

Tel. Gulfport 280; Pass Christian 3;
Bay St. Louis 9106

We carry fire and theft insurance for your protection.

BRUMFIELD'S

BILOXI,
PASCAGOULA
AND
MOSS POINT.

BRELAND & HATTEN

HARDWARE
HOME APPLIANCES, PAINTS
AND SPORTING GOODS

Phone 540

County Street

Pascagoula, Miss.

JOBS! JOBS! JOBS!

Many more vacancies every month than we can fill and Southwide Placement Service assure broad opportunities for graduates. Over 1,000 positions annually. Get writing M today.

Drayton's
BUSINESS COLLEGE

502 1/2 E. Capitol

JACKSON, MISS.

COMPLIMENTS OF

Monarch Chemical Company

New Orleans, Louisiana

MANUFACTURERS OF

DISINFECTANTS ::: INSECTICIDES
SANITARY SUPPLIES

PEOPLES BANK OF BILOXI

Biloxi, Mississippi

Established 1896

45 Years of Conservative, Successful Banking

**FIRST NATIONAL BANK
OF BILOXI**

THE OLDEST BANK ON THE
MISSISSIPPI COAST

Bob: "Have you got a picture of yourself?"

Rady: "Yeah, why?"

Bob: "Then let me have that mirror, I want to shave."—B. N.

"Let's play house. I'll be the walls and get plastered."—Dodo.

Sam: "I s'pose you dance?"

Liza: "Suttinly, I love to"

Sam: "That's better'n dancin'."

—Mis.a.Sip.

JONES BROS. DRUG CO.

"The Rexall Store"

Phones 130—131

Gulfport, Mississippi

AS ALWAYS
JITNEY JUNGLE
WIGGINS, MISSISSIPPI

Compliments of
THE CITY OF GULFPORT
J. W. MILNER, Mayor

Compliments of
**LANG UNDERTAKING
ESTABLISHMENT**
Gulfport, Mississippi
Phone 310-J

Compliments of
HAMMETT MOTORS, Inc.
DODGE AND PLYMOUTH
Tel. 1820 Gulfport

2218 West Beach Blvd.
Highway 90

On the Beach
Phone 690

AVALON MOTOR LODGE

MRS. L. WENTZELL, Manager
New Modern Clean
Bathing, Boating and Fishing
We Satisfy Visit Our Lodges
BILOXI, MISSISSIPPI

Compliments of
HAMILTON BROS. CO.
ROOFING, SHEET METAL, PLUMBING
AND HEATING
Gulfport, Mississippi

What's your name?" the store manager asked the young applicant for a job.
"Ford," replied the young lad.
"And your first name?"
"Henry."
"Henry Ford, eh?" remarked the store manager with a smile. "That's a pretty well known name around here."
The boy looked pained. "It ought to be," he replied proudly. "I've been delivering groceries around here for two years now."—M. E. A.



"One of the South's Great Stores"

Throughout the years since Loeb's was founded ... over 55 years ago ... we have continuously searched for new and better ways to serve you ... our customers!

Proof of the fact that you appreciate this desire to serve is found in the steady growth of Alex Loeb, Inc. ... growing larger with each passing year ... but still retaining a friendly, neighborly interest in the problems of our friends!

May we have the pleasure of serving you in our many, modern departments?

ALEX LOEB, Inc.
"ONE OF THE SOUTH'S GREAT STORES"
Meridian, Mississippi

Dear Mr. Palmolive:

I have bought a tube of your shaving cream. It says no mug required. What shall I shave?

Yours truly,
M. Telihard

Prof.: "Is that your cigarette stub?"

Freshman: "Go ahead, you saw it first."—Mis.a.sip.

Eat Elmer's Candy, "Goodness knows they're good"

Phone 314 -:- Biloxi, Mississippi

FRANK P. CORSO, Distributor

The 1941 PERKOLATOR was printed by the

Gulfport Printing Company

GOOD PRINTING AT A FAIR PRICE

Phone 789

RALPH E. BRASH, Manager

GULFPORT, MISSISSIPPI

Elected

DESIRING ONLY THE BEST SERVICE AND QUALITY
WORKMANSHIP, THE STAFF OF THE 1941

PERKOLATOR

ELECTED US TO DESIGN AND ENGRAVE
THEIR ANNUAL



Years of College and School Publications Experience
have placed us in the field of Better Planned Annuals.
We offer a distinctly different type of service, which
is evidenced by our being elected year after year to
repeat our Quality Work on the same book.



College Annual Division

ALABAMA ENGRAVING COMPANY

Birmingham



GULFPORT PRINTING CO., GULFPORT, MISS.