

PERKOLATOR

1942





The 1942

PERKOLATOR



The 1942 *Edition of*
 P E R K O L A T O R

YEAR BOOK of the Perkinston
 Agricultural High School and Junior College, Harrison, Stone, Jack-
 son, and George Counties Cooperating, Perkinston, Mississippi.

LAURA ALICE RUSS *Editor*

TOM BUSH *Business Manager*



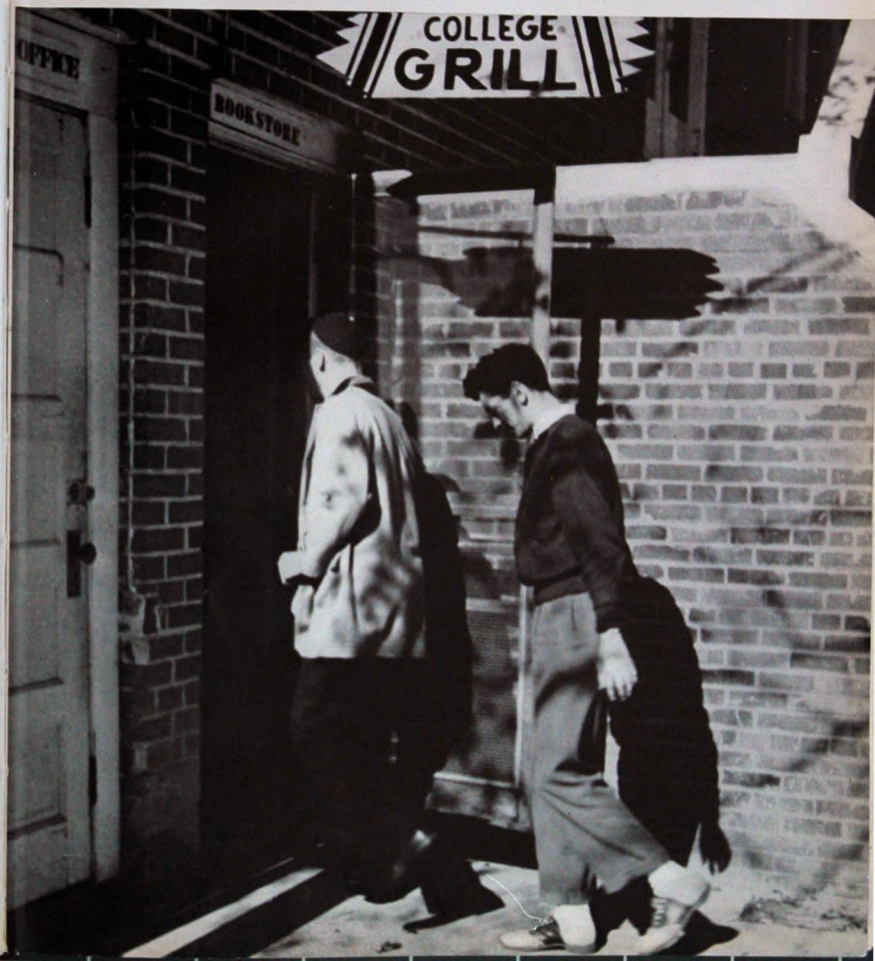
F O R E W O R D

IN SOUTH MISSISSIPPI in the land of pine trees and gulf breezes, "Perk" nestles on the side of a shallow hill. Set far from the highway and away from city throngs, there is found the peaceful and tranquil atmosphere that so characterizes the Deep South. Here is combined the less energetic modern way with the grace of antebellum days. Co-eds minus hoop-skirts and cavaliers sans horses and swords retain the ideals and customs of the Southern way. To this love and loyalty of the Deep South we dedicate this 1942 Annual of Perkinston Junior College.



C O N T E N T S

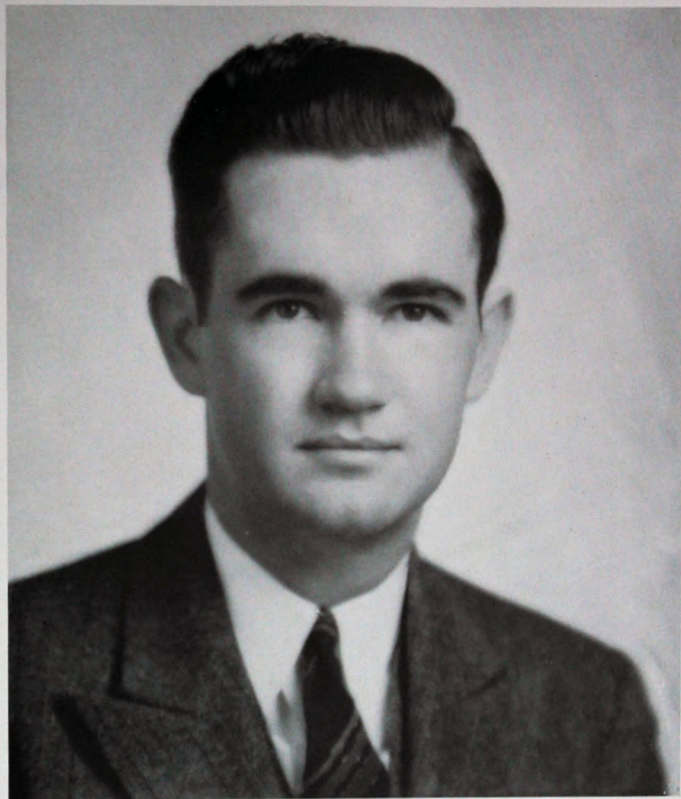
1. FACULTY AND STUDENT BODY
2. ACTIVITIES
3. FEATURES
4. ATHLETICS



DEDICATION

To

L. P. Ingram, a genuine friend of the students who has endeavored to understand their needs and desires and who has dedicated himself to enlarging their social as well as academic life in order to prepare them for life beyond the gates of Perkinson, we dedicate the seventh edition of the Perkulator, which will stand as a constant reminder of his faithful service to "Perk" as he leaves us to enter a greater service to our country.



MR. L. P. INGRAM



In loving memory of

L. R. Weeks

May 14, 1942

As coach, instructor, and dean he endeared
himself to all who knew him by

His devotion to his family

His loyalty to his friends

His appreciation of the beautiful

His abundant service to his fellowman

His inspiration to students

His uprightness of character

His reverence for God



The Faculty and
STUDENT BODY



BOARD OF TRUSTEES

HARRISON COUNTY

VINSON SMITH, Sr., President	Pass Christian
C. S. WENTZELL	Biloxi
M. A. BROADUS	Saucier
W. C. HEAD	Gulfport
R. J. MORAN	Lyman
O. L. LADNER, County Superintendent; Vice-President	Gulfport

STONE COUNTY

JOHN C. DEES, Secretary	Perkinston
T. W. LOTT	Wiggins
J. H. BRELAND	Perkinston
D. E. SMITH	Perkinston
J. A. CHERRY	Wiggins
D. D. O'NEAL, County Superintendent	Wiggins

JACKSON COUNTY

H. P. HEIDELBERG	Pascagoula
M. B. CUMBERT	Escatawpa
E. E. FLURY	Perkinston
MISS MARY O'KIDDE	Perkinston
E. V. SUTROFF	Ocean Springs
A. F. McGEHEE, County Superintendent	Moss Point
	Pascagoula



The PRESIDENT

MR. A. L. MAY

*"Never idle a moment,
But thrifty and thoughtful of others."*

President's MESSAGE

The thought I would emphasize is that we shall always need men and women with college training. Government and industry today need more than ever before trained and skilled technicians. We not only need men and women with broad understanding and special aptitudes to serve as leaders in the national crisis, but more efficient leadership will be demanded to manage the post-war world. We all should redouble our efforts to make the Perkinston Junior College render more efficient service in support of our democratic way of life.

The Junior College is unique in three respects. Preparation is given young men and young women for advanced work at the senior college, university, or professional school. An effort is made to round out and complete the period of general education for some students who cannot undertake senior college work. Training of a vocational nature is provided to students, which training is designed to equip them for

immediate entrance into an adulthood that is necessarily earlier than that of the college preparatory group.

For immediate purposes the Junior College must prepare its students for the different war services, for the production industries, for the production and conservation of foods, and for the civilian defense responsibilities. The fundamentals of mathematics, chemistry, physics, agriculture, home economics, and social science must be emphasized more than ever before. Health and physical education, including first aid, must be greatly intensified. A shop program, including the different trades, must be expanded.

With the splendid type of student body this school has, with its excellent faculty and adequate buildings and equipment, this college is destined to maintain a leading role among the Junior Colleges and render worthwhile and efficient service to the counties supporting it.

The FACULTY



JULIA B. SLAY.....*Dean of Women*



L. R. WEEKS, B.S.....*Dean of Men, Mathematics*



W. G. GREGORY, B.A., M.A.....*Mathematics*



C. O. HINTON, B.S., M.S.....*Chemistry*



B. P. RUSSUM, B.S., M.A.
Social Science, Education, Registrar



INA MAE HART, B.A., B.S., M.A.....*Commerce*

MARY LOCKE, B.A., M.A.....*English*

EDNA ELLEN HANEY, B.A., M.A.....*English*

DOROTHY BROWN, B.A., M.A.....*English*

H. G. TEMPLE, B.A., B.S., M.S.....*Science*

and CAMPUS VIEWS

FRESHMAN DORMITORY



The FACULTY

HARRIET FULTON, B.A. *Voice, Dramatics*

STANLEY C. BEERS, B.A. *Mathematics, Band*

MARION STEELE, B.A., M.A.
..... *Language, First Semester*

TERRY MARIE COLLETTE, B.S.
..... *Language, Second Semester*

MRS. D. D. O'NEAL, B.S., M.A.
..... *Home Economics, First Semester*

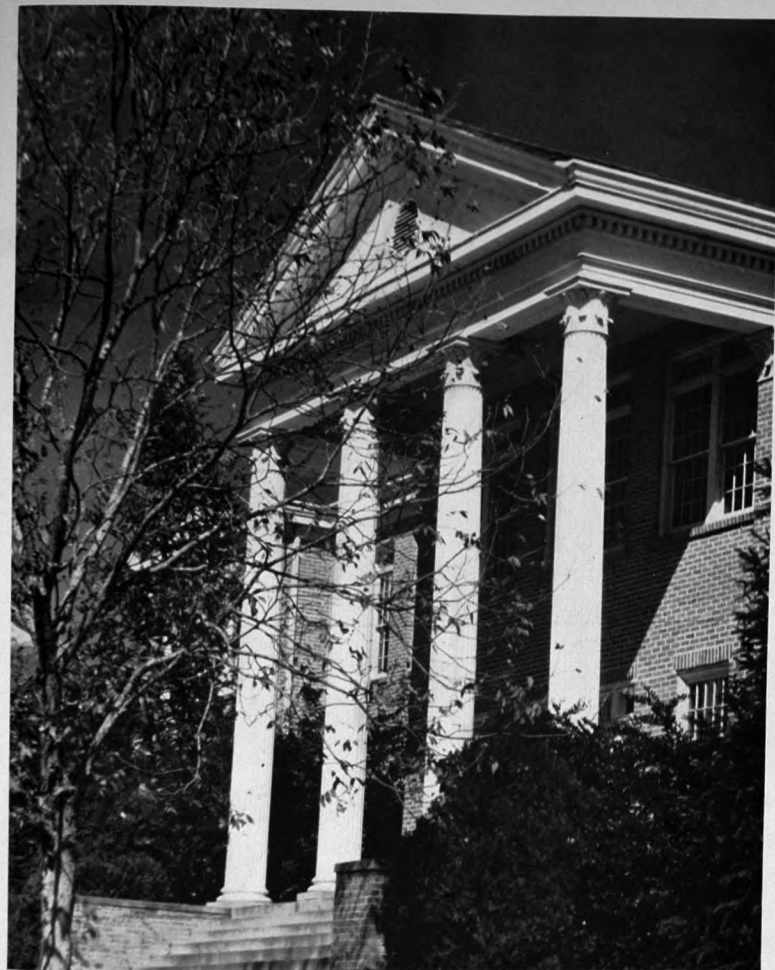
F. ELIZABETH STEPHENSON, B.S., M.A.
..... *Home Economics, Second Semester*

L. P. INGRAM, B.S. *Science*

F. O. PARSONS, B.A., M.S. *Agriculture*

J. W. BURNS, B.A. *Commerce*

J. O. BROWN, B.S. *Athletics, Mathematics*



ADMINISTRATION BUILDING



The FACULTY

ELTON DALIER, B.S.
Physical Education, Social Science
A. I. REXINGER, B.S.
Athletics, Physical Education



ELSIE TRULY, B.A., B.A. in Library Science
Librarian
MRS. L. R. WEEKS *Dietitian*



T. J. GIPSON *Business Manager*
BILL DAVID *Secretary*



MRS. JULIA TEMPLE *Cashier*
MRS. AMELIA EVANS *Nurse*



MRS. GRADY BLACKWELL. *Book Store Operator*

No Picture:
R. F. RIVERS, B.S., M.A. *Social Studies*



Administration Building

Varsity Hall

Harrison Hall



In RECOGNITION

Schools across the nation have sent forth from their portals thousands of young men to enter the armed service of their country. Thousands more of young women as well are busy now in the essential jobs behind the lines that make the functions of the army, navy, marines, and air corps possible. Perkinson has contributed her share of not only students but also a member of the Board of Trustees.

J. N. DEDEAUX, Former Member of Board of Trustees

Marines

BRUCE BEAUMONT..... *Army*

EARL DIAMOND..... *Army Air Corps*

CECIL HAMMONDS..... *Navy*

YNGVARR KRANTZ..... *Navy*

ELROY KRESTENSEN..... *Navy*

JACK SPENCER..... *Army Air Corps*

ROBERT VALENTINE..... *Navy*

NOEL WEINTRAUB..... *Navy*

BILL AVERA..... *Navy*



TOM, DOY EVELYN, AND "BOOTS"

The SOPHOMORE Class

After two years of work and play, tears and laughter, shrieks of pleasure and groans of dismay, at last we see in the distance the achievement of the goal toward which we have striven. We leave with this our aim—"to seek, to find, to conquer, and not to yield."

The Class Officers are: "BOOTS" SINGLETARY, President; TOM BUSH, Vice-President; DOY EVELYN PAYNE, Secretary-Treasurer; ELROY KRESTENSEN, Reporter. MISS TERRY COLLETTE is Sponsor.

The SOPHOMORES

EDWARD ALLEN _____ Bexley, Miss.
Y.W.C.A., '41, '42; Presbyterian Club, '41, '42; Agriculture Club, '41, '42.

WINNIE LOUISE ALLEN _____ Bexley, Miss.
Y.W.C.A., '41, '42; Presbyterian Club, '41, '42; Social Arts, '41, '42; Pep Squad, '41.

MELBORE ETURA ALLEN _____ Lucedale, Miss.
Y.W.C.A., '41, '42; B.S.U., '41; Social Arts, '41; Vice-President, '42; Pep Squad, '41.

BILL AYERA _____ Moss Point, Miss.
I.R.C., '42; Debate (lettered) '42.

NORVEL VICTORIA BENNETT _____ Gulfport, Miss.
Y.W.C.A., '41, '42; Commercial Club, '41, '42.

OSCAR L. BOND, JR. _____ Wiggins, Miss.
Y.M.C.A., '41; Cabiner, '42; Student Council, '42; I.R.C., '42; French Club, '41, '42.

EDWARD P. BROADUS _____ Saucier, Miss.
Y.M.C.A., '41, '42; Agriculture Club, '41; Treasurer, '42; "P" Club, '41, '42; Basketball (lettered), '41; Baseball, '41.

MARY MARGARET BURNS _____ Magee, Miss.
"Gawky"
Y.W.C.A., '42; B.S.U., '42; Commercial Club, '42; Tennis Team, '42.

TOM BUSH _____ Gulfport, Miss.
Y.M.C.A., '41, '42; Wesley Foundation, '41; Reporter, '42; Phi Theta Kappa, '42; Reporter; Vice-President Freshman Class; French Club, '41, '42; Camera Club, '41; Reporter, '42; Vice-President Sophomore Class, '42; I.R.C., '42; Annual Business Manager, '42; Social Recreation Committee, '41, '42; Commercial Club, '42; Best Dressed Boy, '42; Annual Ball Court, '42.

HARVEY TILMAN BYRD _____ Hamburg, Miss.
"Pastor"
Y.M.C.A., '41; Secretary, '42; Wesley Foundation, '41, President, '42; French Club, '41, '42.

HELEN CAIN _____ Mississippi City, Miss.
Y.W.C.A., '41, '42; Wesley Foundation, '41, '42; Social Arts, '42; Pep Squad, '41; Camera Club, '41, '42; F.T.A., '42.

LOUIS C. CAMPBELL _____ Columbus, Miss.
"Lon"
"P" Club, '41; President, '42; Football, '41; Captain (lettered), '42; Basketball (lettered), '41, '42; Track, '41.



BERNICE CARTER _____ Pascagoula, Miss.

"Bunny"
Y.W.C.A., '41, '42; B.S.U., '41, '42; Pep Squad, '41; Camera Club, '41; Secretary, '42; Commercial Club, '42; Sophomore Class Play.

ELENA MAY CURTIS _____ Biloxi, Miss.
Y.W.C.A., '41; Catholic Club, '41; Treasurer, '42; Social Arts, '41; Reporter, '42; Glee Club, '41; Dramatic Club, '41; President, '42; Commercial Club, Treasurer, '42; Annual Staff, '41, '42; Most Courteous Girl, '41; Friendliest Girl, '42; Treasurer Freshman Class, '41; Student Council, '42; Annual Ball Court, '41, '42; Home Coming Queen, '42.

EARL DIAMOND _____ Saucier, Miss.

LLOYD ALTON EASTERLING, JR. _____ Gulfport, Miss.
Y.M.C.A., '41, '42; "P" Club, '41, '42.

ELIZABETH ELOISE ELSTON _____ Gulfport, Miss.

"Betty"
Y.W.C.A., '41, '42; Presbyterian Club, '41; Secretary-Treasurer, '42; Camera Club, '41, '42; Band, '41; Secretary-Treasurer, '42; I.R.C., '41; Vice-President, '42; Commercial Club, '41; Annual Staff, '42; Social Recreation Committee, '42.

LEWIS ELSTON _____ Gulfport, Miss.

"Pete"
Y.M.C.A., '41, '42; Presbyterian Club, '41; President, '42; I.R.C., '41; Reporter, '42; French Club, '41; President, '42; Phi Theta Kappa, '41, '42; Band, '42; Annual Staff, '41, '42; Student Council, '42.

MAKIE ANGELINE GIANNETTO _____ Gulfport, Miss.
Y.W.C.A., '41, '42; Catholic Club, '42; Camera Club, '42; Glee Club, '42; I.R.C., '42; F.T.A., '42; Debate, (lettered) '42; Sophomore Class Play.

JEAN GRAVES _____ Hazlehurst, Miss.

"Jeanie"
Y.W.C.A., '41; Pep Squad, '41; Glee Club, '41; Commercial Club, '41; Vice-President, '42.

HAZEL HOBBS _____ Merrill, Miss.

Y.W.C.A., '41, '42; Pep Squad, '41; Commercial Club, '42.

HARMON JOHNSON _____ Saucier, Miss.

Y.M.C.A., '41; Agriculture Club, '41, '42.

STYLL JOHNSON _____ Saucier, Miss.

"Styl"
Y.W.C.A., '41, '42; Wesley Foundation, '41, '42; Pep Squad, '41; Camera Club, '42; Social Arts, '42; F.T.A., '42.

GLORIA CAROLYN KELLER _____ Biloxi, Miss.

Y.W.C.A., '41, '42; Presbyterian Club, '41, '42; Commercial Club, '41, '42; Pep Squad, '41, '42; Social Arts, '41; Dramatic Club, '42; Sophomore Class Play.



The SOPHOMORES

GLENN KEMP _____ Biloxi, Miss.

"Doc"
Y.M.C.A., '41, '42; Wesley Foundation, '42; "P" Club, '41, '42; I.R.C., '42; Track (lettered), '41; Band, President, '41, '42; Orchestra, '41, '42; Dramatic Club, '42; Sophomore Class Play.

ELROY KRESTENSEN _____ Gulfport, Miss.
Agriculture Club, '42; Band, '41, '42.

LORA LEE LABNER _____ Saucier, Miss.
Y.W.C.A., '41, Program Chairman, '42; Social Arts, '41, Secretary, '42; B.S.U., '41, '42; Pep Squad, '42; F.T.A., '42.

H. T. LEAKE _____ Pontotoc, Miss.

JOHN CHRIS LONGEST _____ Gulfport, Miss.
"Deacon"
President Freshman Class, '41; Phi Theta Kappa, '41; President, '42; Y.M.C.A., '41, Vice-President, '42; Student Council, '41, Vice-President, '42; B.S.U., '42; I.R.C., '41, '42; Debate (lettered), '42; Band, '41, '42.

JOHN LOEKS _____ Pass Christian, Miss.
"Johnny"
Phi Theta Kappa, '41, Secretary, '42; I.R.C., '41; Secretary-Treasurer, '42; Catholic Club, '41, President, '42; Camera Club, '41, '42; Y.M.C.A., '41, Cabinet, '42; Commercial Club, '41.

L. B. MARTIN _____ Memphis, Tenn.
"Barber"
Y.M.C.A., '42; "P" Club, '42; Football, '41 (lettered), '42; Sophomore Class Play.

NORMAN CLYDE McLEOD, Jr. _____ Wiggins, Miss.
"Mac"
Y.M.C.A., '41, '42; Presbyterian Club, '41, '42; I.R.C., '41, '42.

C. E. MURPHY _____ Vancleave, Miss.
Y.M.C.A., '41, '42; Phi Theta Kappa, '42; Agriculture Club, '41, Vice-President, '42; I.R.C., '42.

WELKIN JAMES NIORET _____ Pass Christian, Miss.
Y.M.C.A., '41, '42; Catholic Club, '41, Reporter, '42; Camera Club, '41, Vice-President, '42.

DIXIE BAYE OLIVER _____ Houston, Texas
"Dixie Babe"
Catholic Club, '41, '42; Camera Club, '41, '42; Spanish Club, '41; Glee Club, '41, Sextet, '42; Freshest Freshman, '41; Sophomore Class Play.

GEORGE JOHNNE OWEN _____ Gulfport, Miss.
Y.M.C.A., Cabinet, '42; Episcopal Club, Ministerial Assistant, '42; Band, '42; Spanish Club, '42.



MARYANNE PASSMORE _____ Dallas, Texas

"Hoochie"
Y.W.C.A., '41; Catholic Club, '41, Secretary, '42; Student Council, '41; Camera Club, Secretary, '41; Pep Squad, '41; Phi Theta Kappa, '41; National Historian, '42; Annual Staff, '41, '42; Commercial Club, '41, President, '42; Social Recreation Committee, '41, '42; Best Dressed Girl, '42; Annual Ball Court, '42.

DOV EVELYN PAYNE _____ Gulfport, Miss.
Y.W.C.A., '41, Program Chairman, '42; Wesley Foundation, '41, Program Chairman, '42; French Club, '42, President, '41; Annual Staff, '42; I.R.C., '41, President, State Vice-President, '42; Spanish Club, '41, President, '42; Phi Theta Kappa, '41, Vice-President, '42; Dramatic Club, '42; Secretary-Treasurer, Sophomore Class, '42; Sophomore Class Play.

RAY REDMOND _____ Perkinson, Miss.

"Lover"
Y.M.C.A., '41, '42; Agriculture Club, '41, President, '42.

LAURA ALICE RUSS _____ Gulfport, Miss.
Y.W.C.A., Program Chairman, '41, President, '42; Wesley Foundation Secretary, '41; Editor Annual, '42; Phi Theta Kappa, '41, Reporter Freshman Class, '41; French Club, '41; Social Arts, '42; I.R.C., '42; Commercial Club, '42; Camera Club, '42; Most Courteous Girl, '42; Most Versatile Girl, '42; Most Sophisticated Sophomore, '42; Annual Ball Court, '42.

WALLACE STEVE SEKUL _____ Biloxi, Miss.

"Kildare"
Y.M.C.A., '41, '42; Catholic Club, '41; Vice-President, '42; Camera Club, '41, President, '42; Phi Theta Kappa, '41, Treasurer, '42; Secretary-Treasurer Student Council, '42; I.R.C., '42.

DAVID SHATTLES _____ Ocean Springs, Miss.

OTIS ARNOLD SINGLETARY _____ Gulfport, Miss.

"Boots"
Y.M.C.A., '41, '42; President Sophomore Class, '42; Dramatic Club, '41, Vice-President, '42; Drum Major Band, '41, '42; Annual Staff, '41; Spanish Club, '42; I.R.C., '42; Most Popular Boy, '42; Friendliest Boy, '42; Sophomore Class Play.

ANNIE LOUISE SOBELS _____ Gulfport, Miss.

"Tw"
Y.W.C.A., '41, '42; Wesley Foundation, '41; B.S.U., '42; Commercial Club, '42; French Club, '41, '42.

VERA STEWART _____ Isola, Miss.
Y.W.C.A., '42; B.S.U., '42; Glee Club, '42; Pep Squad, '42; Sophomore Class Play.

GLORIA THORNTON _____ Greenville, Miss.

"Sunshine"
Y.W.C.A., '41; Secretary, '42; Wesley Foundation, '41; Glee Club, '41; Pep Squad, '42; Commercial Club, '41; Social Recreation Committee, '42; Best Dressed Girl, '41; Home Coming Court, '42; Most Popular Girl, '42; Campus Queen, '42; Sophomore Class Play.

IRMO TOLBERT _____ Biloxi, Miss.

Y.W.C.A., '41, '42; Commercial Club, '41, '42.

LEWIS WARD _____ Long Beach, Miss.

"Waffle"
Y.M.C.A., '41, '42; Camera Club, '42; Band, '41, '42; Social Recreation Committee, '42; Sophomore Class Play.



SNAPS

A parting class have set their goals high and leave "Perk" with a satisfaction of having successfully completed a portion of those goals toward which they are striving. They carry with them many memories of fun, activities, and work experienced at "good ole Perk" and leave behind a completed job well worthy of praise.

Here's wishing luck to you all. May all your dreams and aspirations be fulfilled, bringing you the happiness you well deserve.



FRANK, GLORIA, WILMA, AND CALVIN

The FRESHMAN Class

Arriving from their many and varied places of habitation, the Freshmen were in a state of confusion; but as the time progressed, these same Freshmen became more confident and proved themselves worthy of "Perk." This year's happiness and scholastic accomplishments can only be indications of their versatile talents till they finish paying their debt of everlasting gratitude and loyalty to "Perk" in their hopes for a gloriously successful Sophomore year.

Eight states and four foreign countries are well represented by members of the Freshman class—Mississippi,

Texas, Alabama, Iowa, Florida, Louisiana, Arkansas, Kentucky, Costa Rica, Mexico, Honduras, and Nicaragua.

The Officers this year are: FRANK RUSSUM, *President*; CALVIN HEIDELBERG, *Vice-President*; GLORIA WALTON, *Secretary-Treasurer*; WILMA PROFFITT, *Reporter*. MISS MARY LOCKE is *Sponsor*.

The FRESHMAN CLASS

NORMA ALLEN _____ Gulfport, Miss.
Wesley Foundation, Secretary; Y.W.C.A.; Commercial Club; Spanish Club, Secretary; Phi Theta Kappa.

HELEN ARLEDGE _____ Houston, Texas
"Texas"
Camera Club; Catholic Club

THOMAS BACKSTROM _____ Leaf, Miss.
"Tom"
Glee Club, Business Manager; Future Teachers of America, President; Y.M.C.A.; Wesley Foundation; Basketball.

JAMES BAUGHN _____ Greenwood, Miss.
"Mink"
Football (lettered); "P" Club.

ELISE BAYLESS _____ Bay Springs, Miss.
Y.W.C.A., pianist; Dramatic Club; Glee Club, accompanist; Pep Squad; Orchestra; Band.

JAMES BRENT _____ Biloxi, Miss.
"Killer Brent"
Y.M.C.A.; Band; B.S.U.; Camera Club.

CLAUDE BROMLEY, JR. _____ Mobile, Ala.
Orchestra; Band; Catholic Club.

JAMES BROWN _____ Wiggins, Miss.
"Laughing Jim"
Agriculture Club; Y.M.C.A.; B.S.U.

CATHERINE MARIE BUFFETT _____ Pascagoula, Miss.
"Jo"
Catholic Club; Commercial Club.

LA NORA REBECCA BYRD _____ Howison, Miss.
"Dunkus"
Y.W.C.A., Historian; Wesley, Vice-President; Glee Club; Pep Squad; Commercial Club, Secretary.

EARL CASSANOVA _____ Biloxi, Miss.
"Case"
Catholic Club; Camera Club, Phi Theta Kappa.

GUY CRAIG _____ Gulfport, Miss.
Manager, Football and Basketball; "P" Club, Episcopal Club, President.

JOSEPH LEE CREEL _____ Biloxi, Miss.
"Sleepless"
Y.M.C.A.; Camera Club.

DOROTHY ALICE COOK _____ Wiggins, Miss.
"Porky"
Y.W.C.A.; Song Leader; Glee Club; Dramatic Club; Pep Squad; B.S.U.; Debate (lettered).

MARJORIE HASTINGS COOK _____ Pensacola, Fla.
"Cookie"
Y.W.C.A.; Presbyterian Club; Camera Club; Pep Squad.

ALMA COWART _____ Lucedale, Miss.
"Al"
Y.W.C.A., Wesley Foundation; Pep Squad; Commercial Club.

MARGIE CUNNINGHAM _____ Pass Christian, Miss.

JOHNNIE VIVIAN DAVIS _____ Panama City, Fla.
"Johnnie"
Y.W.C.A.; B.S.U.; Glee Club; Pep Squad; Commercial Club.

GEORGE DELPIT _____ Pass Christian, Miss.
"P-terr"
Catholic Club; Football.

JACK DICKSON _____ Moss Point, Miss.

MAURINE EASTERLING _____ Merrill, Miss.
"Little Bit"
Y.W.C.A.; Wesley Foundation; Pep Squad; Commercial Club.

DORIS ELLIS _____ Pass Christian, Miss.
Y.W.C.A.

IRENE FERGUSON _____ Clarksdale, Miss.
"Renie"
Y.W.C.A.; B.S.U.; Commercial Club.

ERIC FREEMAN _____ Biloxi, Miss.
Camera Club; Annual Staff; Y.M.C.A.

HERMES HAGUE _____ Pascagoula, Miss.
Y.W.C.A.

WILLIAM HAHNEMAN _____ Costa Rica, C. A.
"Bill"

EUNICE COLLEEN HAMILTON _____ Gulfport, Miss.
"Baby"
Y.W.C.A.; B.S.U.; Commercial Club; Pep Squad.

IRENE ELIZABETH HANSON _____ Pass Christian, Miss.
Catholic Club; Band.

MARY REBECCA HAYARD _____ Lucedale, Miss.
Y.W.C.A.; Social Arts Club; Wesley Foundation; Glee Club.

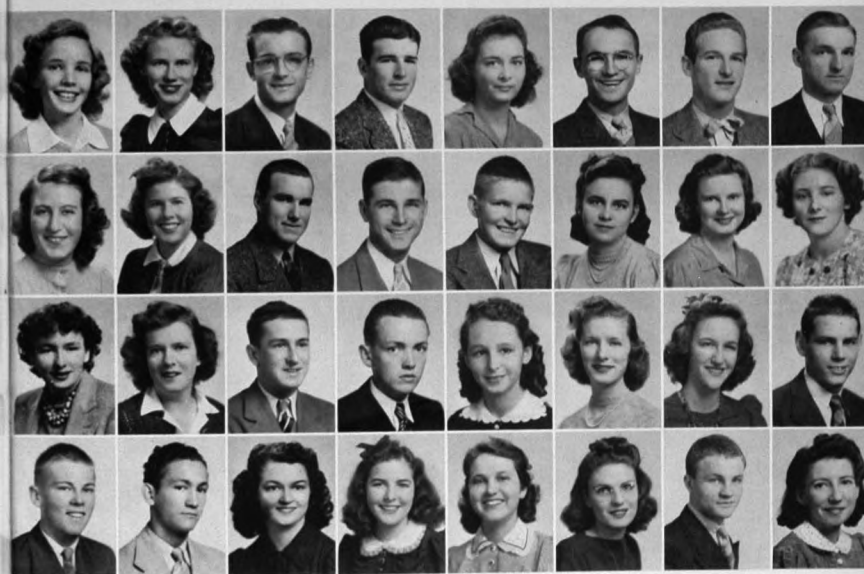
NETTIE MAE HICKMAN _____ Wiggins, Miss.

CALVIN HEIDELBERG _____ Pascagoula, Miss.
"Monkey"
Vice-President Freshman Class.

JUANITA HENDERSON _____ San Pedro Sula, Honduras, C. A.
Catholic Club; Y.W.C.A.; Spanish Club.



IMPORTANT BUSINESS!
PRESIDENT AND SPONSOR
CONFER



The FRESHMAN CLASS

MARGIE HINTON _____ Wiggins, Miss.
Y.W.C.A.; Commercial Club; Band; Glee Club;
Homecoming Court; Social Recreation Committee

ALVIN HOUSE _____ Saucier, Miss.
Agriculture Club.

JAMES JUSTICE HUGGINS _____ Theodore, Ala.
Y.M.C.A.; Wesley; Dramatic Club; Debate Club;
French Club; Glee Club.

RUSSELL HERBERT HUFFSTETTER _____ Biloxi, Miss.
Y.M.C.A.; B.S.U.; Band; Camera Club.

JANEEN IVEY _____ Shreveport, La.
Y.W.C.A.; Catholic Club; Camera Club.

BETTIE JACKSON _____ Biloxi, Miss.
Y.W.C.A.; Pep Squad; Glee Club; B.S.U.

JOHN KENT JACKSON, JR. _____ Norco, La.
"Fuzzy"
Y.M.C.A.; Catholic Club; Football; Most Handsome
Boy; Campus King.

ALEEN JONES _____ Pelahatchie, Miss.
"Shorty"
Y.W.C.A.; B.S.U.; Glee Club; Social Arts Club;
Debate, (lettered).

MAURICE EISHOP JONES _____ Pensacola, Fla.
"Bill"
Wesley Foundation; Football (lettered); "P" Club;
F.T.A.

FRANCIS W. JONES _____ Gulfport, Miss.
"Jonesy"
Y.M.C.A.; Presbyterian Club; I.R.C.

RONALD KEEL _____ De Lisle, Miss.
"Keel"
Phi Theta Kappa; I.R.C.

YNGVAER KRANTZ _____ New Orleans, La.

JIMMY KRESTENSEN _____ Gulfport, Miss.
Y.M.C.A.; Band; Camera Club.

L. A. KROHN _____ Wiggins, Miss.
Football.

ALGA LADNER _____ Perkinston, Miss.
"Babe"
Commercial Club; Glee Club; Pep Squad; Y.W.C.A.;
B.S.U.

MURPHY MADGUX _____ Long Beach, Miss.
"Petee"
Y.M.C.A.; Band.

MARLAND MALLETT _____ Vancleave, Miss.
"Bigger"
Basketball; Football; Agriculture Club.

KENNETH MULLER _____ New Orleans, La.
"Ken"
Football (lettered); "P" Club; Y.M.C.A.; Episcopal
Club; Social Recreation Rep.; Freshman Class; Glee
Club.

WOODFIN MOFFETT _____ Lucedale, Miss.
"Woogie"
Agriculture Club; Y.M.C.A.

MARY B. MORRIS _____ Taylorsville, Miss.
"B"
Band; Y.W.C.A.; B.S.U.; Commercial Club.

BOB NAFF _____ Gulfport, Miss.
Y.M.C.A.; Catholic Club.

JAMES RIDGEWAY NEVERS _____ Gulfport, Miss.
"Shorty"
Episcopal Club; Camera Club.

CATHERINE O'BRYAN _____ Gulfport, Miss.
Dramatic Club; Y.W.C.A.; Episcopal Club; French
Club, Vice-President.

RAYMOND OLSEN _____ New Orleans, La.
"Ray"
Y.M.C.A.; Football, (lettered); Basketball, (lettered);
"P" Club.

DOROTHY ELIZABETH O'NEAL _____ Saucier, Miss.
"Dot"
Y.W.C.A.; Treasurer; Wesley Foundation; Pep Squad;
Glee Club.

OSCAR O'NEAL, JR. _____ Gulfport, Miss.
Football.

WILLIAM THOMAS POLK _____ Centerville, Miss.
"Spud"
French Club.

WILMA A. PROFFITT _____ Lexington, Ky.
"Willie"
Y.W.C.A.; Drum-majorette, Band; Freshman Class
Reporter; Cutest Girl; Annual Staff; Dramatic Club;
Annual Ball Court; Tennis (lettered).

JAMES RALEY _____ Biloxi, Miss.
Band, Vice-President; Orchestra.

CATHERINE RAMSAY _____ Wiggins, Miss.
"Cat"
Y.W.C.A.; Glee Club.

HELEN FRANCES REDMOND _____ Perkinston, Miss.
"Smuggly"
Y.W.C.A.; B.S.U.; Debate (lettered); Pep Squad.

SAMUEL READMAN _____ Gulfport, Miss.
"Sam"
Band, Orchestra; Most Typical Freshman.



There's nothing like a good mag-
azine—is there Miss Hart?



The FRESHMAN CLASS

WILLIAM REYNOLDS — Moss Point, Miss.
"Dab"
Football; Basketball; Glee Club.

ERNEST RIVERS — Port Arthur, Texas
"Bunkie"
Presbyterian Club; I.R.C.

JACK ROBBINS — New Albany, Miss.
Y.M.C.A.; Football.

BERT LEE ROBERTS — Gulfport, Miss.
Y.W.C.A.; Social Recreation Committee, Freshman Class Rep.

GERALDINE ROBERTS — Ocean Springs, Miss.
"Gerry"
Glee Club; Pep Squad; Wesley Foundation.

AUGUSTO RODRIGUEZ — San Jose, Costa Rica, C. A.
"Amigo"
Spanish Club; Camera Club; Catholic Club.

PHILIP PAUL ROTHMAN — Biloxi, Miss.
Presbyterian Club, Reporter; Dramatic Club; French Club, Secretary-Treasurer; Glee Club; Phi Theta Kappa.

VICTOR M. RUIZ — San Jose, Costa Rica, C. A.
"Picky"
Spanish Club; Agriculture Club; Camera Club; Catholic Club.

FRANK RUSSUM — Perkinston, Miss.
"P" Club; Tennis (lettered), '41; Y.M.C.A.; Freshman Class President.

MARILEY RUSSUM — Flora, Miss.
Band; Glee Club; Dramatic Club; F.T.A.; Y.W.C.A.; Social Recreation Committee, Freshman Class Rep.

GEORGE SAAB — Canton, Miss.
Band; Orchestra; Catholic Club, Phi Theta Kappa, I. R. C.

BERNICE SAUCIER — Saucier, Miss.
"Saucier"
Y.W.C.A.; B.S.U.; Pep Squad.

ALBERT ANN SCOTT — Gulfport, Miss.
"Teel"
Glee Club; Pep Squad; Y.W.C.A.; B.S.U., Council.

BENJAMIN SCOTT — Panama City, Fla.
"Ben"
Football; Y.M.C.A.; Episcopal Club.

ELROY SCOTT — New Orleans, La.
Football (lettered); Glee Club; "P" Club; Catholic Club.

GEORGE SPENCE — Biloxi, Miss.
"Winkle"
Agriculture Club; Y.M.C.A.

CLYDE RICHARD STANLEY — New Orleans, La.
Y.M.C.A.; Presbyterian Club.

MYRTIS STEWART — Wiggins, Miss.
Y.W.C.A.; Band; Glee Club; Social Arts Club.

JIMMY STILL — Panama City, Fla.
"Slim"
Football (lettered); Basketball (lettered); "P" Club.

ROBERT THOMPSON — Gulfport, Miss.
"Bobby"
Tennis (lettered), '41; Track (lettered), '41; "P" Club Treasurer.

WILLIAM STINSON — Lucedale, Miss.
"Bill"
B.S.U.; Y.M.C.A.; Camera Club; Football (lettered); "P" Club.

GLENN TORRES — Moss Point, Miss.
Band.

LOU ELLYETTE WAINWRIGHT — Hattiesburg, Miss.
"Six"
Y.W.C.A.; Glee Club; Band; B.S.U.

SAMUEL DEWEY WALKER, JR. — Gulfport, Miss.
"Sam"
Agriculture Club.

WILLIAM WALKER — Mississippi City, Miss.
"Bill"
Debate (lettered); Y.M.C.A.; Camera Club; Wesley Foundation; Spanish Club.

GLORIA WALTON — Moss Point, Miss.
"Dada"
Dramatic Club; Band; Y.W.C.A.; Cabinet; Wesley Foundation; Home-coming Court; Freshman Class, Secretary-Treasurer; Annual Ball Court.

LEE ROY WEEKS, JR. — Perkinston, Miss.
"Sonny"
Tennis (lettered), '41; "P" Club; Dramatic Club; Y.M.C.A.; Band; Wesley Foundation; Cheer Leader.

NOEL WEINTRAUB — New Orleans, La.

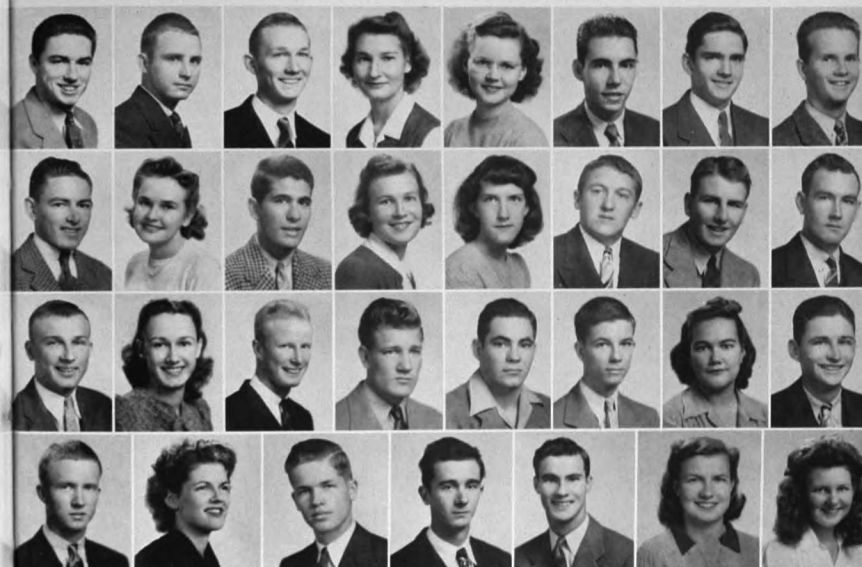
HAROLD WESSON — Corinth, Miss.
Student Council President, '41, '42; Y.M.C.A., President; "P" Club; B.S.U., Cabinet; Football (lettered); Basketball (lettered); Sophomore Class Play.

ELIZABETH WILSON — Gulfport, Miss.
"Libby"
Y.W.C.A.; Dramatic Club; Wesley Foundation; Commercial Club.

ANNIE BELL WINTERS — Fayetteville, N. C.
"Ann"



Funnies on Sunday — All the comforts of home





FROSH SNAPS

COWLICK-PRETTY PENCIL-GRILL AFTER
CHAPEL-SITTING ON TOP OF THE
WORLD-STUDY, STUDY, CRAM, CRAM

The HIGH SCHOOL

The HIGH SCHOOL

Seniors



FRED RAINEY, President; FRANCES LONG, Secretary;
FREDA LONG, Treasurer; DOROTHY HASTINGS, Reporter;
DOROTHY BLEUER, Vice-President.

PERRON ACHORN _____ Biloxi, Miss.
Dramatic Club, '42; Senior Class Play, '42

JOE ANDERSON _____ Gulfport, Miss.
Y.M.C.A., '40-'42; B. S. U., '42; Senior Play, '42

WILLIAM AUER _____ Puerto Castilla, Honduras, C. A.
Y.M.C.A., '39-'42
"Bill"

MARY ELAINE BATSON _____ Wiggins, Miss.
Annual Staff, '42; Y.W.C.A., '39-'42, council, '42;
Social Arts Club, '40-'42, Treasurer, '42; Band,
'41-'42, Majorette, '42; B.S.U., '42, Secretary, '42;
Senior Class Play, '42; Prettiest Girl, '42; Annual
Ball Court, '42; Class President, '40, '41.

WENTZ BATSON _____ Perkinston, Miss.

ERIC BATTY _____ Puerto Castilla, Honduras, C. A.
Cheer Leader, '42; Track, '40-'41.

WILLIE PEARL BENNETT _____ Mississippi City, Miss.
Wesley, '42; Y.W.C.A., '42; Pep Squad, '42.

DOROTHY HELEN BLEUER _____ Piquette, Miss.
"Sis"

Pep Squad Drum Major, '41-'42; Y.W.C.A., '40-
'42; Senior Class Vice Pres, '42; Glee Club, '41-'42;
Principals Club, '41-'42, Sec. '42; Best Girl Dancer;
Cutest Couple, '42.

ROBERT BRYANT _____ Tiquisate, Guatemala, C. A.
"Bobby"

Y.M.C.A., '39-'41; Senior Class Play, '42

GEORGE DENSON _____ Wiggins, Miss.

WILLIAM DGBURLEADY _____ Panama City, Panama
"Bill"

Senior Class Play, '42; Spanish Club, '40-'42;
Catholic Club, '40-'42; Y.M.C.A., '41.

ARCHIE GRAHAM _____ Biloxi, Miss.

Cecil HAMMONDS _____ Bay Minette, Ala.

DOROTHY HASTINGS _____ Gulfport, Miss.
"Dot"

Cheer Leader, '42; Pep Squad, '42; Senior Class
Play, '42; Senior Class Reporter, '42; Catholic
Club, '42.

DURWOOD LANGLEY _____ Biloxi, Miss.
"Daywood"

Senior Class Play, '42; Catholic Club, '42.

FRANCES LONG _____ Biloxi, Miss.
"Little Twin"

Cheer Leader, '42; Dramatic Club, '41-'42, Sec.
'42; Y.W.C.A., '41-'42; Pep Squad, '41-'42; Social
Arts Club, '42; Senior Class Play, '42; Homecoming
Court, '42; B.S.U., '42, Treasurer, '42.

FREDA LONG _____ Biloxi, Miss.
"Big Twin"

Cheer Leader, '42; Dramatic Club, '42; Y.W.C.A.,
'41-'42; Pep Squad, '41-'42; Senior Class Play, '42;
Glee Club, '42; Class Treasurer, '41-'42; Band, '41.

HOWARD PARKER _____ Perkinston, Miss.
"Scottie"

JACK PICKICH _____ Biloxi, Miss.

TONY PITALO _____ Biloxi, Miss.

FRED RAINEY _____ Pensacola, Fla.
"Dictator"

Y.M.C.A., '39-'42; Student Council, '42; Cheer
Leader, '42; Vice-President Class, Sophomore and
Junior, '40-'41; President Class, '42.



The HIGH SCHOOL

Juniors



First Row: June Sneden, Secretary; Babbette Rhodes, Reporter; Annette Hatten, Treasurer; Frederick Ritter, President.
Second Row: Walter Crawford, Sergeant-at-Arms; Bill Raborn, Vice-President.

HOPE ABBOTT Holifto, Costa Rica, C. A.
Y.W.C.A.; Pep Squad

JEAN ALEXANDER Perkinston, Miss.

JOSEPHINE BUCHANAN Altoona, Penn.
Y.W.C.A.; Glee Club.

RICHARD CARROLL Guatemala City, Guatemala
"Ricky"
Catholic Club, Spanish Club.

BARBARA CRECILUS Crawfordsville, Ind.
"Cleo"
Y.W.C.A.; Pep Squad; Social Recreation Committee.

MARY CVITANOVICH Biloxi, Miss.
Catholic Club.

ALICE EVANS Gulfport, Miss.
Y.W.C.A.; Pep Squad; Wesley Foundation.

CHARLES FALKENBERRY Mobile, Ala.
"Bama"
Y.W.C.A.; Presbyterian Club; "P" Club.

CHARLES GOFF New Orleans, La.
Catholic Club; Spanish Club; Orchestra.

HELEN GOLLOTTE Biloxi, Miss.
Catholic Club; Y.W.C.A.; Pep Squad; Glee Club;
Social Arts Club.

ANNETTE HATTEN Perkinston, Miss.
Glee Club

BILLY HINTON Perkinston, Miss.
Football

BOBBY HOWE Biloxi, Miss.

BILLY McNAMER Jackson, Miss.
Glee Club

JANIS PITCHER Biloxi, Miss.
Catholic Club; Y.W.C.A.; Social Arts Club; Pep Squad.

BILL RABORN New Orleans, La.
Band; Orchestra; Social Recreation Committee;
Best Boy Dancer.

DAVID RITTER Guatemala, Central America

FRED RITTER Guatemala, Central America
"P" Club.

BABBETTE RHODES New Orleans; La.

GWYNNE SIBLEY Tiquisate, Guatemala, C. A.

JUNE SNEDEN Sulphur Springs, Texas
Secretary Junior Class; Y.W.C.A.; Pep Squad.

SHEP WERLEIN Biloxi, Miss.

HAL WEATHERBEE New Orleans, La.



HIGH SCHOOL SHOTS

Together even in class—Any comments, Juniors? — There's Frances, our other cheer leader—All dressed up and no place to go.



ACTIVITIES

STUDENT COUNCIL

The Student Council is a democratic organization and is representative of all the students. It consists of president, vice-president, and secretary-treasurer from any division of the school; three council members from the sophomore college division; two from the freshman college division; and one from the high school division. All members are elected by the entire student body.

It is the purpose and aim of the council to foster and promote good relationship between the students and the various student organizations and between the students and the faculty; to plan and promote wholesome activities for the recreation and entertainment of the students; to promote a high standard of scholarship; and to hold student forums where all matters which pertain to student life and student problems on the campus may be discussed and studied in an orderly and democratic way.

President, HAROLD WESSON; Vice-President, JOHN CHRIS LONGEST; Secretary-Treasurer, WALLACE SEKUL.

Sophomore Representatives: 1. ELENA MAY CURTIS, 2. LEWIS ELSTON, 3. OSCAR BOND.

Freshman Representatives: 1. FRANK RUSSUM, 2. WILLIAM WALKER.

High School Representative: 1. FRED RAINEY.

First Row—Oscar Bond, Harold Wesson, Elena May Curtis, John Chris Longest, Wallace Sekul.

Second Row—Frank Russum, Lewis Elston, Fred Rainey.

No Picture—William Walker.



PERKOLATOR STAFF

To be yours to treasure as a monument to a year's work, successfully accomplished in spite of perilous times, the PERKOLATOR Staff proudly presents the 1942 annual. With it go our greetings and best wishes to the members of one of the best student bodies and faculties that "PERK" has ever known.

Top Across—Doy Evelyn Payne, *Associate Editor*; Laura Alice Russ, *Editor*; Lewis Elston, *Associate Editor*; Betty Elston, *Art Editor*; Tom Bush, *Business Manager*.
Bottom Across—Elena Mae Curtis, *Sophomore Representative*; Eric Freeman, *Photographic Editor*; Maryanne Passmore, *Feature Editor*; Wilma Proffitt, *Freshman Representative*; Mary Elaine Batson, *High School Representative*.



SOCIAL *Recreation* COMMITTEE

This Committee was organized in the year 1939 to draw up a constitution, rules and regulations governing all social activities on the Perkinson Campus. The formal dances which we are so fortunate to enjoy now were started by this committee and the scheduling of events was also instigated by this committee. Each college class elects two boys and one girl to serve on the committee; the entire high school elects one boy and one girl. Maryanne Passmore and Bobby Thompson were the two remaining charter members for this year. The classes completed the number by elections. Miss Dalier is chairman. Mr. Ingram, Miss Fulton, and Mr. Rexinger are sponsors. The organization sponsors one formal dance a month and two informal dances a week. This committee has completed charge of decorations for these dances.

These students have authority over the behavior of the students and have a great influence over the social life at "PERK."

First Row: BARBARA CRECILUS, BETTY ELSTON, MARYANNE PASSMORE, MARILYN RUSSUM, GLORIA THORNTON, MARGIE HINTON.
Second Row: RAY OLSEN, LEWIS WARD, TOM BUSH, KENNETH MULLER.
No Picture—Bill Raborn, Bobby Thompson.



PHI THETA KAPPA

The Phi Theta Kappa is an honorary fraternity for junior colleges. Its membership is limited to the upper ten per cent of the student body whose scholastic average must be at least a "B." The aim of the organization is to promote scholarship, leadership, and fellowship.

The local chapter, known as Gamma Nu, is a member of the National Society of Phi Theta Kappa. This year it is composed of 19 members. Gamma Nu has been well represented among national officers in the past—Howard Pollock, a former "Perk" student being National President for 1940-41, and Maryanne Passmore, National Historian for 1941-42. The National convention was held this year at our neighbor school, Gulf Park College. A large number of our chapter membership enjoyed there the rare privilege of fraternizing with other junior college students from distant points of the nation.

The officers this year are: John Longest, President; Doy Evelyn Payne, Vice-President; Johnny Lozes, Secretary; Wallace Sekul, Treasurer; Tom Bush, Reporter.

First Row—Laura Alice Russ, Gloria Walton, Norma Allen, Doy Evelyn Payne, Walline Ladner, Mary Havard.

Second Row—Tom Bush, Earl Cassanova, George Saab, James Hudgens, Wallace Sekul, C. E. Murphy.

Third Row—William Walker, Phifer Rothman, John Chris Longest, Ronald Keel, John Lozes, Lewis Elston.

No Picture—Maryanne Passmore



International RELATIONS CLUB

The International Relations Club is one of a national organization endowed by Andrew Carnegie. Membership is open to students who have an average of 85 or above in social studies. Bi-monthly meetings feature discussions of current events and international problems. A war bulletin was sponsored this year by the club, and as vice-president of the State Federation of International Relations Clubs, Doy Evelyn Payne was sent from the "Perk" chapter to the state convention at Mississippi State College.

The officers this year are: Doy Evelyn Payne, President; Betty Elston, Vice-President; John Lozes, Secretary-Treasurer; Lewis Elston, Reporter. Mr. R. F. Rivers is sponsor.

First Row—Catherine O'Bryant, Elizabeth Wilson, Doy Evelyn Payne, Marjorie Cook, Marie Giannetto, Mary Havard, Norma Allen.

Second Row—Tom Bush, Laura Alice Russ, Clyde McLeod, Elizabeth Elston, Wallace Sekul, C. E. Murphy.

Third Row—Oscar Bond, Leroy Rivers, John Chris Longest, Earl Cassanova, George Saab.

Fourth Row—John Lozes, Francis Jones, Woodfin Moffett, Lewis Elston, Boots Singletary.



Y. M. C. A.

The Young Men's Christian Association of the Perkinson Junior College is a union of students and faculty members for the following purpose:

The Student Christian Movement is a fellowship of students who, in seeking the meaning of life, are captivated by Jesus and His understanding of God and man; and are committed to comprehending and following its implications in personal and social living.

For us there are implicit in this purpose certain convictions and obligations. We seek to discover the Christian ethic in relation to the urgent social problems of the day. Working always to realize Jesus' ideal of the brotherhood of all men, we are committed to do all in our power to bring about a more just social order.

As a movement sincerely seeking to be interracial in membership, we will steadily work in our fellowship and in the college and world community for the elimination of racial prejudice and those discriminations and inequalities which deny our Christian belief in the Fatherhood of God and the brotherhood of man.

President—HAROLD WESSON; *Vice-President*—JOHN LONGEST; *Secretary*—TOM BACKSTROM; *Treasurer*—BILL JONES

First Row—Hal Wetherbee, Eric Freeman, Kenneth Strange, Jimmie Brent, Harold Wesson, Oscar Bond, Frank Russom, C. E. Murphy.

Second Row—James Hudgens, Joe Anderson, Bill Jones, George Owen, Lewis Elston, Tom Bush, Wallace Sekul, Clyde McLeod, Harvey Byrd.

Third Row—Glenn Torres, Jack Dickson, William Walker, Ray Redmond Edward Broadus, Mr. Gregory, Sponsor; Edward Allen, Earl Cassanova, George Saab.

Fourth Row—Tom Backstrom, Billy McNamee, Hermes Hague, Johnny Lozes, "Boots" Singleton, John Chris Longest, Francis Jones, Woodfin Moffett, LeRoy Rivers, James McMurray.



Y. W. C. A.

Our Young Women's Christian Association has for its prime purposes the development of the religious life of all of the students of all denominations while on the campus, and the training of religious leaders as workers in their various communities where they will live and work after their college course is completed. The club meets on Wednesday night each week at 6:45 in the lobby of Harrison Hall, where programs of a devotional and inspirational nature are given. Periodically the Y. W. C. A. and Y. M. C. A. have joint meetings at which the clubs alternate in furnishing the programs. On each third Sunday of the month the two clubs are jointly responsible for worship services at the local church with members of all denominations represented on the program.

"Highlights" of our year's activity:

Religious Emphasis Week—Mr. and Mrs. Oscar Hendrix and the boys from "State"; Dr. J. N. Brown, and Mr. Owen Cooper.

Drive for money to donate to the United States Government

Red Cross Drive

Christmas Party—Folk dancing

"Manless Wedding"—Colleen and Freda

First Row—Janis Pitcher, Mary Cytanovich, Marilyn Russom, *Freshman Program Chairman*; Margie Hinton, Dot Hastings, Mary Deure, Hope Abbott, Alene Jones, Juanita Henderson, Maurine Easterling, Louise Sorrels, Laura Alice Russ, *President*; Catherine O'Bryant, Irmo Tollert, Barbara Creelius, June Sooten.

Second Row—Margie Cook, "Six" Wainwright, Albert Ann Scott, Frances Long, Helen Gallotte, Norvel Bennett, Vivian Davis.

Third Row—Bernice Carter, Marie Giannetto, Babbette Rhodes, Doy Evelyn Payne, *Sophomore Program Chairman*; Elizabeth Wilson, Colleen Hamilton, *Typist*.

Fourth Row—Arnell Saucier, Hazel Hobbs, Alice Evans, Josephine Buchanan, Betty Jackson, Irene Ferguson.

Fifth Row—Dot Blener, Elise Bayless, Pianist; Norma Allen, Gloria Thornton, *Secretary*; Alga Ladner, Dorothy Cook, *Song Leader*; LeNora Hyrd, *Historian*.

Sixth Row—Mary Elaine Hutton, *High School Program Chairman*; Freda Long, Bernice Saucier, Dorotha Travis, Vera Stewart, Lora Ladner, *Sophomore Program Chairman*; Gloria Keller, Myrtis Stewart, Walline Ladner, *Vice-President*; Mary Margaret Burns, *Reporter*; Mary Havard, Alma Cowart, Det O'Neal, *Treasurer*; Louise Allen.

Seventh Row—Wilma Proffitt, Gloria Walton, Nettie Mae Hickman, Miss Haney, *Sponsor*; Helen Redman, Margery McGee, Betty Elston, Mary B. Morris.



SPANISH CLUB

The Spanish Club of Perkinson Junior College is composed of students from Latin America and the language students. Their primary interest is using a common knowledge of Spanish to unite the American countries with bonds of friendship and understanding.

The officers this year are: Doy Evelyn Payne, President; Richard Carroll, Vice-President; Norma Allen, Secretary-Treasurer. Miss Marion Steele is sponsor.

First Row—Miss Marion Steele, sponsor; Norma Allen, Nina Saunders, Doy Evelyn Payne, Juanita Henderson.

Second Row—Charles Goff, Hernan Echeverria, Frank Russum, Victor Ruiz, George Owen.
Third Row—Roderigo Fernandez, Augusto Rodriguez, Boots Singletary, Raymond Ball, William Walker.



FRENCH CLUB

The French Club is an organization composed of students of the French language classes and others interested in the life, history, and culture of France. Although it is not composed of the entire French classes, the majority of the students are members.

Its purpose is to study and learn in a friendly atmosphere more about France and her people. This year there have been talks on French government, a study of newspapers written in French, and descriptions of conditions in France today. The club's foremost achievement this year was sponsoring a French movie. The club entertainment was a party modeled after the parties given by the French people. Every member is urged to take an active part to improve his organization.

First Row—Miss Steele, Doy Evelyn Payne, Louise Sorrels, Catherine O'Bryant, Tom Bush.

Second Row—Oscar Bond, John Roberson, Harvey Byrd, Wallace Sekul, Lewis Elston.

Third Row—Phifer Rothman, Werlin Niolet, Kenneth Tarzetti, E. T. Whittington.



AGRICULTURE CLUB

The Agriculture Club was organized in the spring of 1938. The sophomore agricultural boys wrote the constitution, called a meeting of all agricultural students, and elected officers from the freshman class to serve the first full year of 1938-1939. Tom Ramsey of Navy Aviation and Paul Graham, Airplane Mechanic, were the first two boosters of the club and were on the committee to write the constitution. The purpose of the club is to develop agricultural leadership and enable the student to select his field in agriculture.

President, RAY REDMOND; *Vice-President*, C. E. MURPHY; *Secretary*, ELROY KRESTENSEN; *Treasurer*, EDWARD BROADUS; *Reporter*, JAMES MCMURTRAY.

Left to Right—Ray Redmond, Loraine Willison, George Spence, James McMurtray, Russell Huffstetter, Harmon Johnson, Marland Mallette, C. E. Murphy, Edward Broadus.
No Picture—Elroy Krestensen



SOCIAL ARTS CLUB

The members of the Social Arts Club strive to achieve perfection in all social and domestic affairs. It is composed of those girls who are in classes of home economics or those who have special interest in the development and promotion of standards of home and family life.

The purposes of the club are to further interest in all phases of home economics, to develop deeper appreciation of things of culture and art, and to promote a spirit of happiness and cooperation.

The officers during the year 1942 are WALLINE LADNER, *President*; MELIONEE ALLEN, *Vice-President*; LORA LADNER, *Secretary*; MARY ELAINE BATSON, *Treasurer*; and ELENA MAY CURTIS, *Reporter*.

First Row—Janis Pitcher, Melionee Allen, Elena May Curtis, Laura Alice Russ, Nina Sanders.
Second Row—Mary Devore, Aileen Jones, Lora Ladner, Sibyl Johnson, Frances Long, June Sneden, Barbara Creclius.
Third Row—Mary Cvitanovich, Alice Evans, Mary Elaine Batson, Freda Long, Myrtis Stewart, Walline Ladner, Helen Cain, Mary Havard, Miss Elizabeth F. Stephenson, *Sponsor*.



DRAMATIC CLUB

The Dramatic Club is an organization whose purpose is to provide entertainment for the students, both in the production and in the presentation of plays. It is composed of a selected group of interested and talented students who wish to broaden their experience in the theatre.

"The Bat," a three-act murder mystery, offered "chills and thrills" to the student body in the early part of the school year. In the spring, "Three Crooks and a Lady" was chosen for the Little Theatre Festival, and "Suppressed Desires" was presented to the student body. All of these plays were directed by Miss Harriet Fulton.

Officers of the club are:

President—ELENA MAY CURTIS; *Vice-President*—OTIS SINGLETARY;

Secretary—FRANCES LONG; *Treasurer*—LEROY WEEKS.

Scenes From "THE BAT"



FUTURE TEACHERS

Bennie P. Russum Chapter No. Two, Future Teachers of America, on the Perkinston campus was chartered as a local unit in the national organization on October 27, 1941, with the following charter members: Thomas S. Backstrom, *President*; Walline Cowart, *Vice-President*; Marilyn Russum, *Secretary-Treasurer*; Sibyl Grace Johnson, *Librarian*; Walline Ladner, *Reporter*; Helen Mae Cain, Lora Ladner, Maurice B. Jones, Nettie Mae Hickman, Marie Giannetto, Mrs. Julia Temple, and Bennie P. Russum, *Sponsor*. Ours is the first chapter organized in a junior college in Mississippi.

Future teachers pledge themselves to maintain physical vitality, mental vigor, moral discrimination, wholesome personality, helpfulness, knowledge and leadership in order that they may be worthy of the profession.

First Row—Marilyn Russum, Walline Ladner, Marie Giannetto.
Second Row—Sibyl Johnson, Lora Ladner, Helen Cain.
Third Row—Mr. B. P. Russum, *Sponsor*; Tom Backstrom, Bill Jones.
No Picture—Wallace Cowart, Maurice Jones, Mrs. Julia Temple.





The COMMERCIAL CLUB

First row—Bernice Carter, Vivian Davis, Colleen Hamilton, Irene Ferguson, La-
Nora Byrd, Gloria Keller, Norma Allen, Miss Ina Mae Hart, *Sponsor*.

Second row—Mary Margaret Burns, Catherine Buffett, Norvel Bennett, Hazel
Hobby, Maurine Easterling, Elizabeth Wilson, Bert Lee Roberts.

Third row—Jean Graves, Elena May Curtis, Maryanne Passmore, Ann Winters,
Alma Cowart, Laura Alice Russ, Mr. J. W. Burns, *Co-sponsor*.

THE COMMERCIAL CLUB is a reciprocal and pleasurable business club in which members work for mutual interest and professional advancement. The group of enthusiasts is composed of high school and college students studying commercial work. Its purpose is to be banded together for mutual helpfulness and the gain to be along the professional, educational, social, inspirational and recreational lines. Emphasis has been placed upon familiarizing students with the present business problems connected with accountants, stenographers, secretaries, and typists.

The guest speakers have given the members valuable knowledge of business and its requirements of the profession.

<i>Best Typist</i>	VIVIAN DAVIS
<i>Best Shorthand Student</i>	GLORIA KELLER
<i>Best Secretarial Student</i>	LAURA ALICE RUSS
<i>Best Law Student</i>	GLORIA KELLER
<i>Best Accountant</i>	TOM BUSH

THE CAMERA CLUB

The Camera Club, organized in 1941, completes its second succesful year. Under the very able guidance of L. P. Ingram, the club has made much progress in the study of photography, pictures being developed and printed in the school's own dark room. A study was also made of other branches of the art of taking pictures, and much attention was given to color photography. The following years are expected to bring greater progress than ever before.

First Row—James Brent, Laura Alice Russ, Bernice Carter, Sibyl Johnson, Marjorie Cook, Helen Arledge, Dixie Oliver, Wallace Sekul.

Second Row—Tom Bush, Dorothy Clemons, Marie Giannetto, Helen Cain, Elizabeth Elston, Victor Ruiz, Russell Hufstetter.

Third Row—Ronald Keel, William Walker, Werlin Niolet, John Lozes, Earl Casanova, Kenneth Strange.



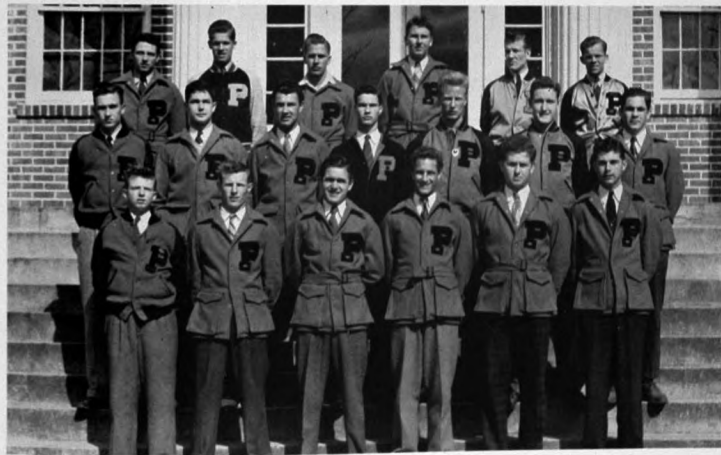
"P" CLUB

The "P" Club is an organization made up of athletes of the school who have won a letter in some major sport. With just twelve members back from last year, it has increased its membership to twenty-five. The club elects its own officers and takes part in the religious and social activities on the campus.

First Row—Lloyd Easterling, Bill Jones, L. B. Martin, E. T. Whittington, Hilton Bourne, Guy Craig.

Second Row—David Shattles, Kenneth Muller, Walter Whittington, Harold Wesson, Jimmy Still, Ray Olson, William Stinson.

Third Row—Hayes Allen, Lee Roy Weeks, Jr., Shirley Batson, Elroy Scott, Robert Thompson, Fred Ritter.



BAND

The "Perk" band was organized in 1934-35. Though a new organization, it played four concerts. In 1939 it placed third in the state contest and had an excellent record in ensembles and solos. In 1940, the band won the coveted state trophy. In 1941, it also made a fine showing at the State Band Festival. This year the band played for all the football games.

The officers this year are:

President, GLENN KEMP; Vice-President, JAMES RALEY; Secretary-Treasurer, BETTY ELSTON, and Reporter, MARILYN RUSSUM.

First Row—Margie Hinton, Mr. Beers, Director; Bill Rayborn, Betty Elston, Lewis Elston, Murphy Maddux, Wilma Proffitt, "Boots" Singletary.

Second Row—Myris Stewart, Irene Hanson, John Chris Longest, Mary B. Morris, Russell Huffstetter, Marilyn Russum, Mary Elaine Batson.

Third Row—Gloria Walton, Jimmy Brent, Glenn Torres, Lewis Ward, M. Margaret Burns, James Raley, Sam Readman.

Fourth Row—Glenn Kemp, Elroy Krestensen, Claude Bromley, Bill Avera, George Owen, Sis Wainwright, George Saab.



ORCHESTRA

The "Swing Barons," under the direction of S. C. Beers, has been one of the most active organizations on the "Perk" campus. Featuring each member as a soloist, it has become one of the best orchestras in South Mississippi.

The "Swing Barons" play for all formal dances and banquets on the campus and are very popular with the dancers on the coast, having played for many organizations, including Gulf Park College, Mississippi Southern, fraternities and sororities in nearly all coast cities, Lions Club of Biloxi, and several Mardi Gras Carnival organizations.

The "Perk" orchestra does its part in advertising the school by giving concerts at many high schools in the four counties, including formal evening concerts in connection with the Glee Club in the several major high schools.

First Row—Bass Fiddle, Charles Goff; Tenor Sax, George Saab; Alto Sax, James Raley; Alto Sax, Sam Readman; Trumpet, Claude Bromley.

Second Row—Drums, Bill Raborn; Trombone, Mr. Beers.

Third Row—Vibraphone, Mr. Beers; Piano, Elise Bayless; Trumpet, Glenn Kemp.



PEP SQUAD

The drill and cheering squad was organized in 1937. This year there were 40 girls, a drum major and the girl cheerleaders in this highly colorful, and enthusiastic group. Their purpose is to provide entertainment at all ball games and form the nucleus for the cheering section. Occasionally the group makes trips to games off the campus. These girls are hard workers, for during the season Miss Dalier leads them through drill almost every day. Girls who attend three-fourths of the practices are rewarded by receiving emblems.

All "Perk" is exceedingly proud of the high spirit and attractive presentations of the Pep Squad.

Pep Squad Leader: Dorothy Blever.

First Row—Gloria Thornton, Hope Abbott, Elise Bayliss, Alga Ladner, Willie P. Bennett, Bernice Saucier, Dot Clemons, Dot Travis.

Second Row—Alice Evans, Mary Devore, Helen Gallotte, Barbara Crecilius, Mary Havard, Hazel Hobby, Nina Saunders, Geraldine Roberts.

Third Row—Gloria Keller, June Sneden, Melionee Allen, Nettie Mae Hickman, Vera Stewart, Colleen Hamilton, Catherine Ramsay.

Fourth Row—Janis Pitcher, Marjorie Cook, La Nora Byrd, Ann Winters, Alma Cowart, Albert Ann Scott, Lora Ladner, Helen Redmond.

Fifth Row—Lois Blackledge, Maurine Easterling, Bettie Jackson, Dot Cook, Vivian Davis, Margie Cunningham, Babette Rhodes, Dot O'Neil.

Pictures not shown—Aleen Jones, Walline Ladner, Margery McGee.



GLEE CLUB

The Glee Club is one of the most active organizations on the campus. It is composed of thirty-five young men and women. Under the direction of Miss Harriet Fulton, the Glee Club presented a very effective Christmas program. The annual spring concert was presented on the campus and toured to Long Beach, Pascagoula, Gulfport, and Biloxi. The girls' sextet visited most of the high schools in Harrison, Stone, Jackson, and George Counties.

First Row—Miss Fulton, *Directors:* Dixie Oliver, Dot Cook, Albert Ann Scott, Nina Sanders, Freda Long, Marie Giametto, Margie McGee, Dorothea Travis, Dot O'Neal, Catherine Ramsey, Alga Ladner, Dot Bleuer, Vera Stewart, Betty Jackson, Marilyn Russum, Annette Hatten, Aleen Jones.

Second Row—Josephine Buchanan, Lou Ellyette Wainwright, Geraldine Roberts, Billy McNamee, James Hudgens, Phifer Rothman, Hermes Hague, Richard Carroll, Hal Wetherbee, John Roberson, Vivian Davis, Mary Havard.



WESLEY FOUNDATION

The Wesley Foundation is a religious organization composed of the Methodist students on the campus. It serves as a connecting link between the student and his home church. Its purpose is to promote spiritual development and maintain fellowship among the students.

This organization had its beginning under the direction of Reverend Ridgeway, pastor of the Wiggins Methodist Church, in the fall of 1937 and has continued its weekly meetings since that time.

Officers—*President*, HARVEY BYRD; *Vice-President*, LA NORA BYRD; *Secretary-Treasurer*, NORMA ALLEN; *Reporter*, TOM BUSH; *Program Chairman*, DOY EVELYN PAYNE.

First Row—Maurine Easterling, Sibyl Johnson, La Nora Byrd, Elizabeth Wilson, Norma Allen.
Second Row—Mary Havard, Willie Pearl Bennett, Norvel Bennett, Doy Evelyn Payne, Gloria Walton.
Third Row—Harvey Byrd, Wilma Proffitt, Laura Alice Russ, Tom Bush.
Fourth Row—Bill Jones, Hermes Hague, Tom Blackstrom.



NEWMAN CLUB

The Newman Club is an organization which is composed of the Catholic students of Perkinson Junior College.

Its purpose is to foster the spiritual, intellectual, and social interest of the Catholic students on the campus; to aid in the work of the Catholic Church; and to assist the college and the students whenever possible.

Officers—*President*, John Lozes; *Vice-President*, Wallace Sekul; *Secretary*, Maryanne Passmore; *Treasurer*, Elena May Curtis.

First Row—Miss Collette, *Sponsor*; Irene Hanson, Helen Arledge, Maryanne Passmore, Elena May Curtis, Mary Cvitanovich, Janis Pitcher, Marie Giannetto.
Second Row—Wallace Sekul, Rodrigo Fernandez, Hernan Echiverrea, Johnny Lozes, Werlin Niolet.
Third Row—Elroy Scott, Augusto Rodriguez.



EPISCOPAL CLUB

The Episcopal Club was organized during the school year of 1939-1940. The club meets each Tuesday evening, at which time the Reverend Warwick Aiken of Pass Christian, Mississippi, and the Reverend George Stephenson have charge of the service.

The officers this year are Guy Craig, *President*; Kenneth Muller, *Vice-President*; and Dorothy Bleuer, *Secretary*. Under the able sponsorship of Miss Elsie Truly, this small group has remained active and interested in religious work.

First Row—Catherine O'Bryant, Dorothy Bleuer, Miss Elsie Truly, *Sponsor*.
Second Row—Kenneth Muller, George Owen, Guy Craig.



B. S. U.

Realizing that the greatest argument for Christianity is a Christian, the members of B. S. U. and B. Y. P. U. have aimed to set the Christian example in conduct and church loyalty by supreme allegiance to Christ. They have sought to become more consecrated to Christ and to instill in their lives purity of thought, word, and deed.

These two are very closely related, the B. S. U. serving as a connecting link between the campus and church activities while the B. Y. P. U. is the organization in and through which the Perkinson Baptist Church educates and trains young people in privileges, responsibilities, and duties of church membership.

The members of the B. S. U. center around the council which is composed of Walline Ladner, *President*; Louise Sorrels, *Social Vice-President*; E. T. Whittington, *Membership Vice-President*; Jimmie Brent, *Devotional Vice-President*; Mary Elaine Batson, *Recording Secretary*; Frances Long, *Treasurer*; Harold Wesson, *Publicity Director*, and representative from unit organization. J. W. Burns has served as faculty advisor.

First Row—Melionee Allen, Colleen Hamilton, Irene Ferguson, Albert Ann Scott, Lou Ellyte Wainwright, Mary Margaret Burns, Vivian Davis, Betty Jackson, Frances Long, Mary Elaine Batson, Elise Bayless.
Second Row—Aleen Jones, Lora Ladner, Alga Ladner, Dorothy Cook, Nettie Mae Hickman, Helen Redmond, Walline Ladner, Mary B. Morris, Dorothy Clemons, Dorothea Travis, Bernice Carter, Annie Louise Sorrels, Freda Long, Bernice Saucier.
Third Row—Murphy Macclus, David Shattlee, Walter Crawford, Oscar Bond, John Chris Longest, Hilton Bourne, Russell Huffstetter, William Stinson, E. T. Whittington, Jimmie Brent, Harold Wesson, Boots Singletary, Mr. J. W. Burns, *Sponsor*; Joe Anderson.



PRESBYTERIAN CLUB

The Presbyterian Club is a religious organization formed to bring the Presbyterian students closer together and to form a connecting link between the church and them.

The club meets twice a month on Tuesday evenings at 7:00. One of the meetings is conducted entirely by the students; the other is conducted by a speaker sent from Gulfport by Reverend J. N. Brown of the First Presbyterian Church.

On the remaining Tuesday evenings, members are urged to attend services sponsored by the Episcopal and Lutheran students. Though small, the club takes pride in its services and its cooperation with other religious groups on the campus.

*First Row—Phifer Rothman, Marjorie Cook, Betty Elston, Leroy Rivers.
Second Row—Mr. C. O. Hinton, sponsor; Lewis Elston, Francis Jones, Charles Falkenberry.*



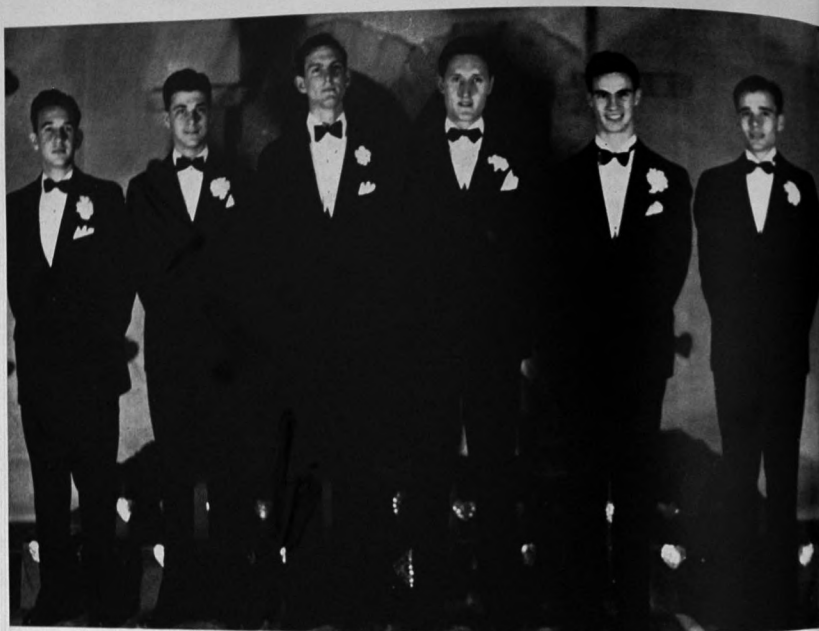
FEATURES



JOHN JACKSON

GLORIA THORNTON

The KING *and* QUEEN OF HEARTS



The D U K E S

1. OSCAR BOND
2. GUY CRAIG
3. JOHN CHRIS LONGEST

4. RAY OLSEN
5. HAROLD WESSON
6. TOM BUSH



and M A I D S

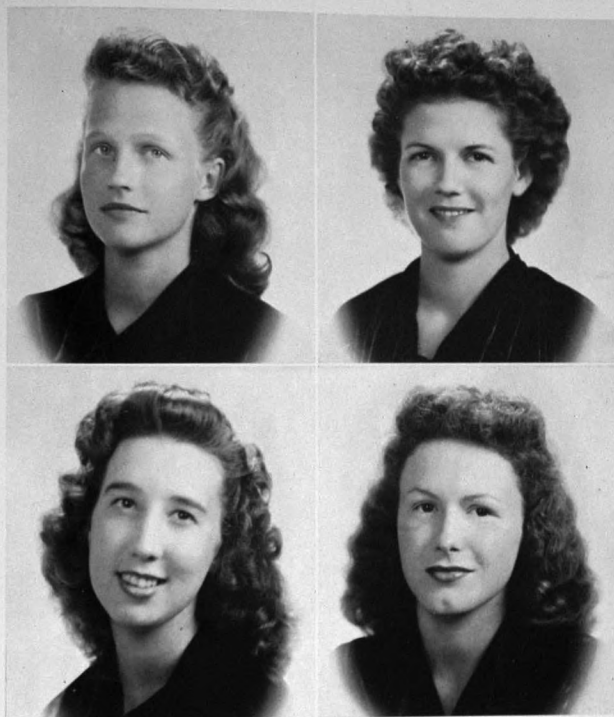
1. ELENA MAY CURTIS
2. MARY ELAINE BATSON
3. WILMA PROFFITT

4. MARYANNE PASSMORE
5. GLORIA WALTON
6. LAURA ALICE RUSS

The HOMECOMING QUEEN *and* COURT



Queen: ELENA MAY CURTIS



MAIDS

FRANCES LONG
MARGIE HINTON

GLORIA WALTON
GLORIA THORNTON



WHO'S

1. John Jackson—*Most Handsome Boy*
2. Gloria Thornton—*Most Popular Girl*
3. Maryanne Passmore—*Best Dressed Girl*
4. Elena May Curtis—*Friendliest Girl*
5. Harold Wesson—*Most Courteous Boy, Most Versatile Boy*
6. Wilma Proffitt—*Cutest Girl*

7. "Bill" Raborn—*Best Boy Dancer*
8. Mary Elaine Batson—*Prettiest Girl*
9. Sam Readman—*Most Typical Freshman*
10. Laura Alice Russ—*Most Sophisticated Sophomore, Most Versatile Girl, Most Courteous Girl*
11. Tom Bush—*Best Dressed Boy*

WHO

12. Dorothy Bleuer—*Best Girl Dancer*
13. Louie Campbell—*Best Boy Athlete*
14. Dot Bleuer and Frank Russum—*Cutest Couple*
15. Miss Mary Locke—*Best Liked Teacher*
16. "Boots" Singletary—*Friendliest Boy, Most Popular Boy*





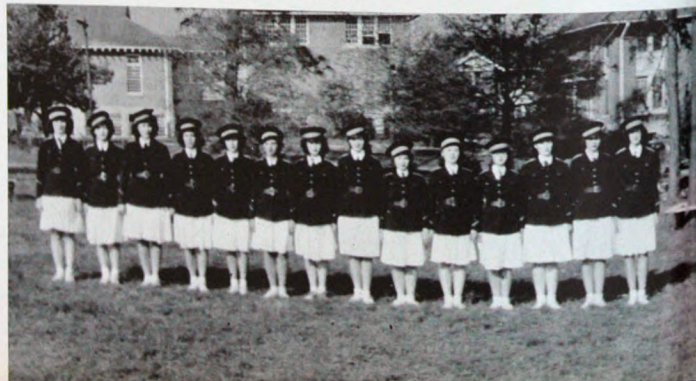
The Girls' HOME GUARD

Not wishing to let the boys surpass their efforts to prepare to meet a common foe, the girls at Perkinston have organized a Home Guard which has regular drill, officers, and uniforms just like their "big brothers."

Left to right—Helen Cain, 2nd Lieutenant, Platoon One; Maryanne Passmore, 2nd Lieutenant, Platoon Two; Betty Elston, 2nd Lieutenant, Platoon Three; Wilma Profit, 2nd Lieutenant, Staff Officer; Gloria Keller, Captain; Marie Giannetto, 1st Lieutenant, Platoon Three; Freda Long, 2nd Lieutenant, Platoon Four; Dot Bleuer, 2nd Lieutenant, Platoon Five.

Dolly Clemons, Corporal; Gloria Walton, Corporal; Dot O'Neal, Sergeant; Vivian Davis, Corporal; Josephine Buchanan, Sergeant; Janeen Ivey, Top Sergeant; Dot Hastings, Corporal; Mary Elaine Batson, Corporal; June Sneden, Sergeant; Hope Abbot, Corporal; Frances Long, Corporal; Catherine Ramsey, Sergeant; Helen Redmond, Corporal; Mary Margaret Burns, Corporal.

Not shown—Nina Saunders, Sergeant; Dot Travis, Corporal.



ATHLETICS



A. I. REXINGER
Football

J. O. BROWN
Assistant Football, Basketball

MISS ELTON DALIER
Girls' Intramural Coach

The COACHES

A. I. REXINGER, *Football*

Coach Rexinger each year turns out a football team that "Perk" can well be proud of—proud not because they are winners alone, but because they are good losers as well. In cooperation with the defense efforts, intercollegiate baseball was discontinued this year; but Coach "Rex" did not let the spring season pass without the click of the bat as it contacts the ball, because intramural softball was a big feature of this year's program of athletics.

J. O. BROWN, *Assistant Football, Basketball*

Every football team has a forgotten man who contributes much to the team's success—the assistant coach. Such a position Coach J. O. Brown occupies; but when basketball season rolls around, "Perk" is assured that a capable team will wear her colors under his direction.

MISS ELTON DALIER, *Girls' Intramural Coach*

The girls do not participate in intercollegiate sports, but their year is filled with an interesting program of activities planned and directed by Miss Dalier.



CHEERLEADERS

FRED RAINEY, FRED A LONG, "SONNY" WEEKS,
DOT HASTINGS, ERIC BATTY, No picture—
FRANCES LONG.

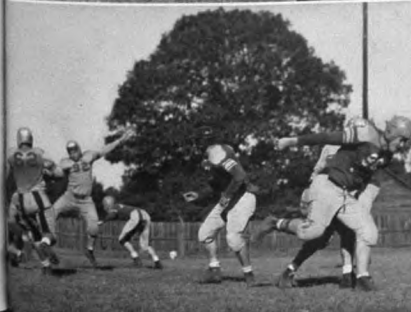
RESUME *of the* SEASON

PERKINSTON	13	MISS. COLLEGE FROSH	6
PERKINSTON	12	ELLISVILLE	24
PERKINSTON	19	SOUTHEASTERN FROSH	14
PERKINSTON	6	SCOоба	6
PERKINSTON	14	SUMMIT	6
PERKINSTON	6	WESSON	51
PERKINSTON	0	GOODMAN	0
PERKINSTON	21	POPLARVILLE	29
PERKINSTON	38	116TH FIELD ARTILLERY, CAMP SHELBY	0

Starting with one letterman, four reserves, and the remainder freshmen, our team developed into a fast-moving and accurately clicking football dynamo. The most exciting home game was with Southeastern. Our team was trailing 14-0 but staged a comeback and won 19-14. The most exciting game away from home was with Poplarville. The score was tied four times during the game. The team did an excellent job and showed marked improvement every

week. If the lettermen return, the prospects for next year's team look good.

One of the leading and colorful attractions of each football game is the cheerleaders. Each year three boys and three girls are elected by popular vote of the student body. There are pep meetings before each game, and the cheerleaders decorate for the games. One of the big affairs of the year is Homecoming when "Perk" has a pep meeting and burns the dummy at the bonfire.



The PLAYERS

*Left to right,
First row:*

Walter Whittington
Kenneth Muller
Marland Mallette

Second row:

Hilton Bourne
L. A. Krohn
John "Tiny" Rutherford

Third row:

David Shattles
Bill Reynolds
Harold Wesson

Fourth row:

Billy Hinton
Jimmy Haynes
Cecil Hammonds
Jimmy Baughn

Fifth row:

Jimmy Still
E. T. Whittington
Managers Kenneth Tarzetti
Charles Falkenberg
Guy Craig

First row:

Ben Scott
Shirley Batson
Oscar O'Neal

Second row:

Ray Olson
John Jackson
Jack Robbins

Third row:

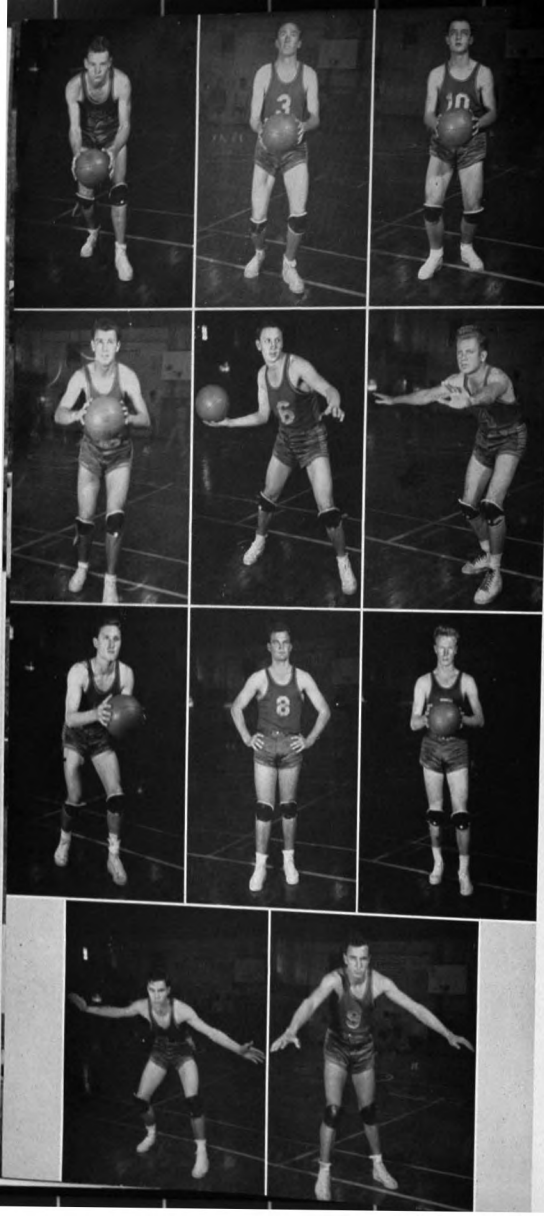
Bill Jones
George Delpit
Jack Pickich

Fourth row:

Elroy Scott
Jack Spenser
L. B. Martin
William Stinson

Fifth row:

Hayes Allen
Jack Williams
Lou Campbell



First row:

R. L. Rouse
David Shattles
Tom Backstrom

Second row:

Walter Whittington
Hayes Allen
Lou Campbell

Third row:

Ray Olson
Marland Mallette
Jimmy Still

Fourth row:

Harold Wesson
Kenneth Tarzetti



I N T R A M U R A L S

Intramurals played an important part in the athletic program at "Perk" this year. The boys held tournaments at the end of each season of touch football, basketball, and volley ball to determine championship teams.

The girls held volley ball, basketball, and shuffleboard tournaments. The most exciting activity was the platoon military drill. Officers selected from the girls lead maneuvers, and uniforms make the work twice as interesting.

Intramural

S P O R T S



Shuffleboard



Basketball



Baseball



All students are given a physical examination, and restricted classes are provided for those students who are not physically able to participate in the regular classes. Since so many inter-collegiate sports are being discontinued, intramurals are playing an important part in the athletic program at "Perk."





S N A P S

Resume of the year's activities at "Perk":
Physical exams—Burning the dummy—The
one who sends us those reports and demerits—
Summer gymnastics

Our PATRONS

Professor (to bright frosh): "How would Shakespeare have said, 'I see a bowlegged man'?"

Freshie: "Eh-Ah! What is this I see?"
"Tis a man walking in parentheses."

COMPLIMENTS

OF

C. J. DARBY

CHANCERY CLERK

GULFPORT

MISSISSIPPI

COMPLIMENTS

OF

HAMILTON BROTHERS

GULFPORT

MISSISSIPPI

COMPLIMENTS

OF

**MISSISSIPPI POWER
COMPANY**

T. O. Dalier, Mgr.

GULFPORT

MISSISSIPPI

Compliments
of

Mississippi School Supply

Jackson

Mississippi

"What's the idea of the Smiths taking French lessons?"

"Why, they've adopted a French baby and want to understand what it says when it begins to talk."

Seasonal

"When do the leaves begin to turn?"

"The night before exams start."

SALE'S STUDIO

ANNUAL PHOTOGRAPHS

BY

H. D. SALE

GULFPORT

MISSISSIPPI

1415 26th Avenue

Phone 1066

GENERAL ELECTRIC APPLIANCES

O'Neal Electric Company

ELECTRICAL CONTRACTING

OSCAR O'NEAL, Manager

GULFPORT

MISSISSIPPI

"Pop, will I look like you when I grow up?"

"Everybody seems to think so, Son."

"Well, I won't grow up for a long time yet, will I, Pop?—(Capper's Weekly)."

English Teacher: What is a metaphor?

Frosh: To keep cows in.

COMPLIMENTS OF

O. F. CASSIBRY

BOARD OF SUPERVISORS

GULFPORT

MISSISSIPPI

COAST HARDWARE CO.

THE HOME OF
GOOD HARDWARE

GULFPORT

MISSISSIPPI

Compliments of

M. SALLOUM
DEPARTMENT STORE

14th Street

GULFPORT

MISSISSIPPI

JONES BROS. DRUG CO.

The REXALL Store

Phones 130-131

GULFPORT

MISSISSIPPI

**ANDERSON'S
MEN'S WEAR**

14th Street

GULFPORT

MISSISSIPPI

English Teacher: "Will you correct this sentence, 'Girls is naturally better looking than boys'?"

Sophomore: "Girls is artificially better looking than boys."

"Man is the merriest species of the creation; all above or below him are serious."—(Addison).

GULFPORT

LAUNDRY and CLEANING CO.

Dry Cleaners and Dyers

GULFPORT

MISSISSIPPI

COMPLIMENTS OF

H. T. COTTAM CO.

J. E. BAILEY
Representative

GULFPORT

MISSISSIPPI

WARNING—PUN AHEAD

Professor (to unruly freshman)—Tell me, Sir, what has become of your ethics?

Freshman—Oh, Sir, I traded it in long ago for a Hudson.—(School Activities).

Kowry's

GULFPORT,

MISSISSIPPI

The New Store for Men and Boys—
Where Style and Quality Prevail

14th STREET

COMPLIMENTS

OF

HAMILTON BROTHERS

GULFPORT

MISSISSIPPI

A man and his wife recently went for a hike in the woods. Suddenly they realized that they had lost their way.

"I wish Emily Post were here with us," said the husband. "I think we took the wrong fork!"—(The American Observer).

STONE'S ICE CREAM CO.

GULFPORT,
MISSISSIPPI

Compliments of the

J. C. CLOWER FURNITURE CO.

GULFPORT

MISSISSIPPI

DR. L. B. DARON

OPTOMETRIST

PHONE 2068

GULFPORT

MISSISSIPPI

COMPLIMENTS OF

DAY'S DRUG CO.

GULFPORT

MISSISSIPPI

GULFPORT PAINT AND GLASS CO.

25th Ave.

GULFPORT

MISSISSIPPI

Freshman: "Where do jailbirds come from?"

Soph: "They are raised from larks, bats, and swallows."

Professor (finishing long algebra problem): "And so we find X equals zero."

Sophomore: "All that work for nothing?"—(School Activities).

MAY OUR JUNIOR COLLEGE CONTINUE TO
GROW AND BE THE NUMBER ONE
JUNIOR COLLEGE OF THE SOUTH
DEWEY LAWRENCE, SUPERVISOR DIST. ONE—HARRISON CO.

Eat a Little "Snack"

at

REID'S CAFE

Where All Students Go

PERKINSTON

MISSISSIPPI

Riemann Funeral Home

Phone 29-J

1718 25th Avenue

GULFPORT

MISSISSIPPI

Compliments
of
GULFPORT
BUTANE GAS
&
APPLIANCE COMPANY
2832 13th St.

GULFPORT **MISSISSIPPI**

Compliments of

A. J. RAMSAY
CIRCUIT CLERK

GULFPORT **MISSISSIPPI**

Compliments of

The City of
Gulfport

SHORT STORY

He looked around to see if all was ready. It was. He gazed into the strained, tense faces, but none made a move to stop him. Suddenly he lifted a short .38 revolver toward his temple—a few panting words, and he pulled the trigger—Bang!—and amid the cheers of the crowd, four athletes sped down the track.—(Scholastic.)

COMPLIMENTS OF

THE

H. & H.
HOTEL and CAFE

GULFPORT

MISSISSIPPI

Eat At

The

SPLENDID CAFE

26th Ave.

GULFPORT

MISSISSIPPI

STONE
ICE CREAM CO.

GULFPORT

MISSISSIPPI

CASH
&
CARRY
GROCERY

WIGGINS - - - MISSISSIPPI

COMPLIMENTS
OF

PALACE
THEATER

WIGGINS
MISSISSIPPI

Compliments
of

C. N.
Cruthruds

Justice of
The Peace

GULFPORT,
MISSISSIPPI

Compliments of

Wiggins Implement
Co.

WIGGINS

MISSISSIPPI

QUINTZ
DRUGS

IN

BILOXI
MISSISSIPPI

JITNEY
JUNGLE

WIGGINS - - - - MISSISSIPPI

TRENTON
SUPPLY CO.

IN

WIGGINS - - - MISSISSIPPI

COMPLIMENTS OF

WILSON'S
PHARMACY

WIGGINS

MISSISSIPPI

TASTES DIFFER

It was a tea-room in the slums of Paris.
Customer (who had ordered tea):
"What is this mess in front of me? Is it
tea or is it coffee?"
Manager: "What does it taste like?"
Customer: "It tastes like wood alcohol."
Manager: "Then it must be tea. Our
coffee here tastes like gasoline."

"The sun never sets on the British Empire," said the Englishman proudly.
 "How unfortunate!" remarked the American girl "At home we have such lovely sunsets."

"Now, Bobby Jones," said the teacher, "Where is the elephant found?"
 "The elephant is such a big animal, teacher, that it is hardly ever lost."

HUB CITY TYPEWRITER EXCHANGE

HATTIESBURG, MISSISSIPPI

COMPLIMENTS OF A FRIEND R. M. HENDRICKS Manufacturers of ACADEMIC CAPS AND GOWNS

State Representative of
Herff-Jones Jewelry
 Largest Manufacturers of Class Pins,
 Invitations, and Personal Cards
 JACKSON MISSISSIPPI

Draughon's Business College

Fully Accredited by the American
 Association of Commercial
 Schools
 502½ EAST CAPITAL
 JACKSON MISSISSIPPI

Martins Air Conditioned Cafe

110 E. Howard Ave.,
 Biloxi, Mississippi

WHERE QUALITY AND SERVICE PREVAIL
 GROVER GRAHAM, Prop.

B. M. I.

A unique institution with three fine schools catering to those who wish to accomplish something worth while in life.

Complete and special courses, free employment service to graduates. Individual progress method of instruction, enter any time.

Bish Mathis Institute

Longview, Tex., Monroe, La.,
 Pass Christian, Mississippi

THE D I N N E R B E L L

BILOXI
MISSISSIPPI

COMPLIMENTS OF

WIGGINS DRUG STORE

WIGGINS
MISSISSIPPI

"On the Beach"

Phone 155

PASTIME CAFE

"Famous for its Seafoods
 and Western Meats"

James V. LaHes
 Manager

105 W. Beach Blvd.

BILOXI

MISSISSIPPI

Compliments

of

ARCADIA-NESS

Dairy Products of the Coast

TOOLEY-MYRON STUDIO

"Foremost in the South"

308 W. Howard Ave.

Phone 125

Portrait Photographer

BILOXI

MISSISSIPPI

IMPROVEMENT

The nice old gentleman stopped to talk to the wee girl who was making mud pies on the sidewalk.

"My goodness," he exclaimed, "you're pretty dirty, aren't you?"

"Yes," she replied, "but I'm prettier clean."—(School Activities).

GIFTLAND

"That Cute Little Shop"

LUCY NOBLE, Owner

411 West Howard Ave.

BILOXI

MISSISSIPPI

Compliments
 of

Hotel Avelez

\$1.50 to \$2.50 Single
 Every Room With Bath
 W. G. FELKINS, Manager

BILOXI

MISSISSIPPI

Compliments of

Honorable D. L. Pool
 Deputy U. S. Marshal

Biloxi Division of Southern District
 of Mississippi
 Since July 10, 1935 to date

BILOXI

MISSISSIPPI

GRANT DRUGS

WALGREEN AGENCY

BILOXI

&

GULFPORT
 MISSISSIPPI

Compliments

of

The Merchants Co.

GULFPORT

MISSISSIPPI

The Rendezvous

BILOXI

MISSISSIPPI

Neighbor Joyner—My, but your daughter Sally is growing fast.

Neighbor Rygg—Oh, I don't believe she's any worse than the other young folks in town.

Brokaw—What is your position in the club?

Sally—Absolutely neutral. I don't side with either faction.—(Pathfinder).

2818 West Beach Blvd.
Highway 90

On the Beach
Phone 690

AVALON MOTOR LODGE

MRS. L. WENTZELL, Manager

NEW

MODERN

CLEAN

BATHING, BOATING AND FISHING

We Satisfy

BILOXI, MISSISSIPPI

Visit Our Lodges

Thoss Sporting Goods Co.

76 Dauphin St.

MOBILE,
ALABAMA

Electric Maid Bake Shop

You Taste the Difference

414 W. Howard Ave.

BILOXI

MISSISSIPPI

Sandwiches—Steaks—Seafood

A & B CAFE

625 W. Beach

Biloxi

Mississippi

Teacher: "When was Rome built?"

Percy: "At night."

Teacher: "Who told you that?"

Percy: "You did. You said Rome wasn't built in a day."—(Boston Transcript).

Compliments

of

Superior Products Co.

3110 Monroe Street

NEW ORLEANS

LOUISIANA

Compliments

of

Dees General Store

PERKINSTON

MISSISSIPPI

Compliments

of

Dodge Printing Company

GULFPORT

MISSISSIPPI

Come to

THE COLLEGE GRILL

EAT, DRINK, AND ENJOY YOURSELF

COLD DRINKS, ICE CREAM, SANDWICHES, FUN

COMPLIMENTS OF

HANCOCK BANK

GULFPORT

MISSISSIPPI

The Powers Company

Mobile, Alabama

MIMEOGRAPH - SUPPLIES - DITTO

**FIRST NATIONAL BANK
OF BILOXI**

THE OLDEST BANK ON THE
MISSISSIPPI COAST

Compliments
of the

**Southwestern Gas and
Electric Company**

BILOXI

MISSISSIPPI

**MARGARET'S
Gulf Coast Candies**

BILOXI

MISSISSIPPI

SOUTHERN COAL COMPANY, INC.

ESTABLISHED 1896

1224 CANAL BUILDING

NEW ORLEANS, LOUISIANA

Peoples Bank of Biloxi

Biloxi, Mississippi

Established 1896

**46 Years of Conservative,
Successful Banking**

GEO. D. STANNUS
Manager

HOTEL BILOXI

"They All Come Back"
On The Gulf of Mexico

BILOXI

MISSISSIPPI

WHAT HE NEEDED

Mountaineer (taking son to school-room): My boy's arter learnin'. What have you got?

Teacher: We offer arithmetic, English, trigonometry, spelling, etc.

Mountaineer: Just give him some of that thar trigernometry; he's the worst shot in the family.

**COLONIAL BAKING
COMPANY**

JACKSON

MISSISSIPPI

**BUY THE
*Buy!***



SUPERSENSITIVE

Two men were seated in a crowded car. One, noticing that the other had his eyes closed, said, "Bill, ain't yer feelin' well?"

"I'm all right," said Bill, "but I do hate to see ladies standing."—(Journal of Education).

Compliments of

**DEWEY LAWRENCE
BOARD OF SUPERVISORS**

May our school continue to grow and
prosper as it has in the past.

Compliments
of

BALCO FEED STORE

BILOXI,

MISSISSIPPI

COMPLIMENTS OF

**BALLARD
&
BALLARD**

GULFPORT

MISSISSIPPI

KIRKPATRICK COAL COMPANY

SALES AGENTS AND DISTRIBUTORS
OF QUALITY COALS

MEMPHIS

TENNESSEE

THE EMBLEM OF FINE PRINTING



BIRMINGHAM PRINTING COMPANY
Birmingham, Alabama



Ready to Face the World
★ ★ COME WHAT MAY.

CONFIDENCE is the heritage of youth . . . it is also a fundamental requirement of business . . . attained by long study, training and experience • We have enjoyed the confidence of yearbook Staffs throughout the country for over thirty years . . . an accomplishment for which we are truly grateful and justly proud . . .

★ ★ ★ ★ ★
COLLEGE ANNUAL DIVISION
ALABAMA ENGRAVING COMPANY
BIRMINGHAM