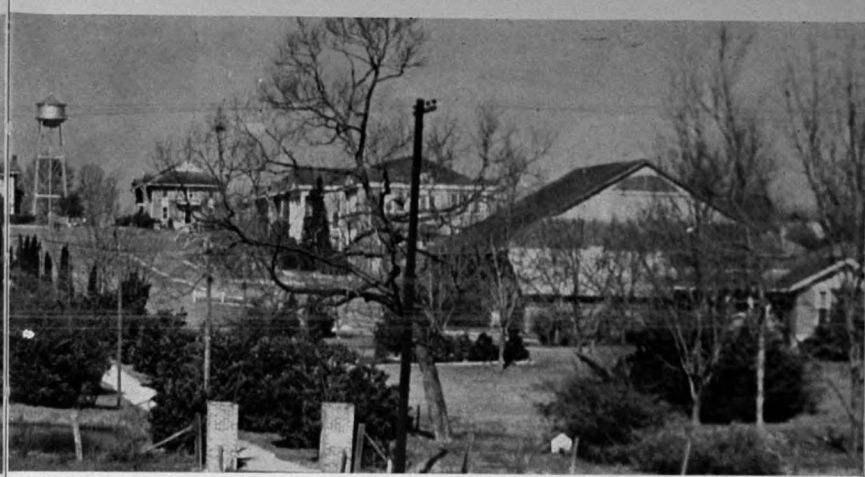


The 1943
PERKOLATOR



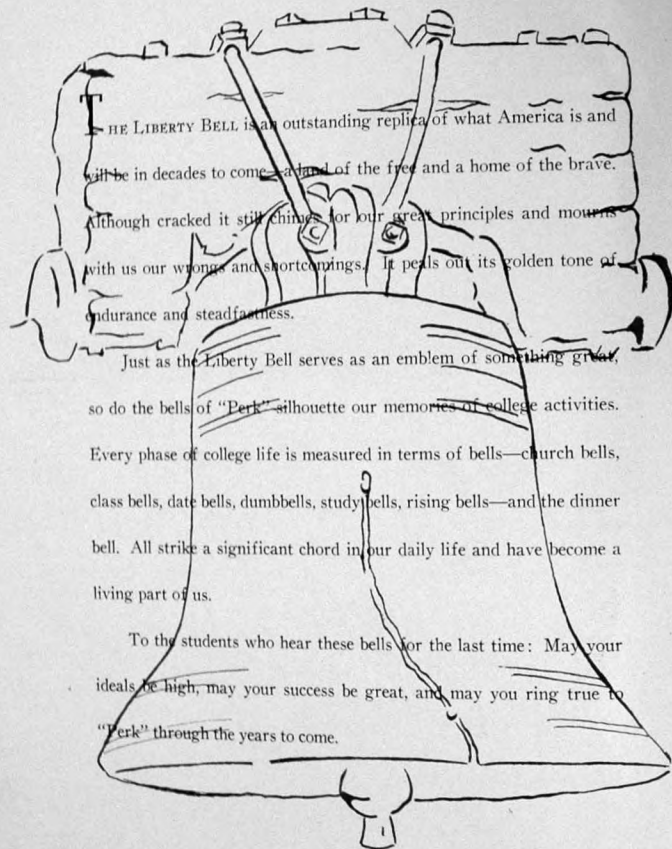


The P E R K O L A T O R *of* Copyright ● 1943

GLORIA WALTON _____ *Editor*
 LEE ROY WEEKS
 HERBERT ROBINSON _____ *Business Managers*

A YEAR BOOK PUBLISHED BY THE STUDENTS
 OF PERKINSON JUNIOR COLLEGE
 PERKINSON, MISSISSIPPI

P R E F A C E



THE LIBERTY BELL is an outstanding replica of what America is and will be in decades to come—a land of the free and a home of the brave. Although cracked it still chimes for our great principles and mourns with us our wrongs and shortcomings. It peals out its golden tone of endurance and steadfastness.

Just as the Liberty Bell serves as an emblem of something great, so do the bells of "Perk" silhouette our memories of college activities. Every phase of college life is measured in terms of bells—church bells, class bells, date bells, dumbbells, study bells, rising bells—and the dinner bell. All strike a significant chord in our daily life and have become a living part of us.

To the students who hear these bells for the last time: May your ideals be high, may your success be great, and may you ring true to "Perk" through the years to come.

Contents

- I. THE COLLEGE
- II. THE CLASSES
- III. PHYSICAL EDUCATION
- IV. THE FEATURES
- V. ORGANIZATIONS

To One who is rich in human philosophy, high in moral ideals, and eager to serve everyone at all times, we, the Annual Staff, affectionately dedicate the eighth edition of the Perkulator to you, Mr. Russum. As registrar and instructor, you have served the college faithfully for 12 years, contacted all the students, and known them as individuals, not just as students. Your fervent interest in us and your inspiring influence will ever be felt by the teachers and students of Perk.



MR. B. P. RUSSUM

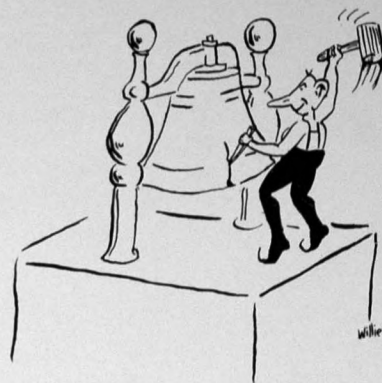
D E D I C A T I O N . . .

In Memory of
F. O. PARSONS

September 13, 1942

Who loyally and faithfully served the college
for 18 years, whose life was always an inspira-
tion, and under whose direction the campus has
become a place of beauty and enjoyment for
teachers and students alike.

I. *The*
COLLEGE



*More Trouble! First it was moved; then the
clapper disappeared; now it'll need welding!*

CAMPUS *Views*

THE FOUNTAIN

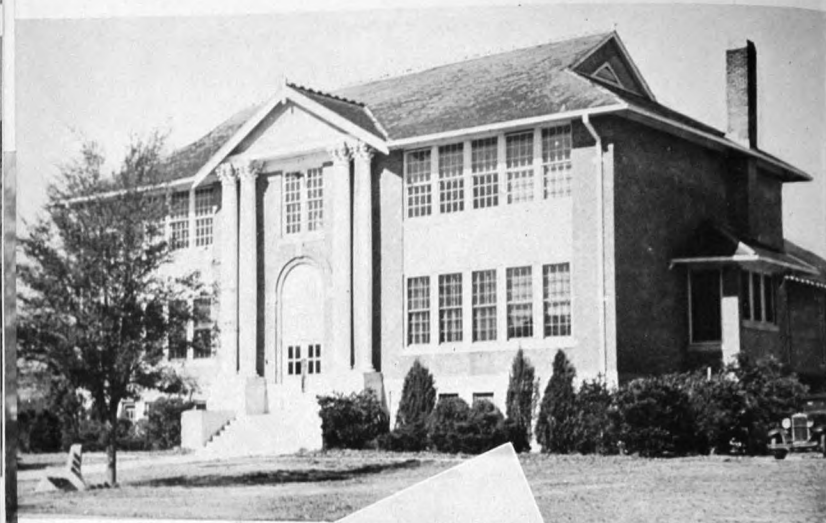


THE PRESIDENT'S HOME

THE ADMINISTRATION BUILDING



THE SCIENCE BUILDING



HARRISON HALL

FRESHMAN DORMITORY

Varsity Hall

TEACHERS' DORMITORY

HIGH SCHOOL DORMITORY



THE GYMNASIUM



Our PRESIDENT

MR. A. L. MAY

Deeply instilled in the hearts of Perk students, alumni, and friends is an earnest appreciation of his unusual ability, genial disposition, and sincere attitude toward the advancement of the school. Through his untiring efforts to make the college a bigger and better place, he has endeared himself not only to the students and faculty but also to the citizens of the four counties supporting it.

Board of TRUSTEES

HARRISON COUNTY

VINSON SMITH, SR., President	Pass Christian
C. S. WENTZELL	Biloxi
M. A. BROADUS	Saucier
W. C. HEAD	Gulfport
R. J. MORAN	Lyman
O. L. LADNIER, Co. Supt. ; Vice-President	Gulfport

STONE COUNTY

C. E. DEES	Perkinston
T. W. LOTT	Wiggins
J. H. BRELAND	Perkinston
D. E. SMITH	Perkinston
J. A. CHERRY	Wiggins
D. D. O'NEAL, Co. Supt. ; Secretary	Wiggins

JACKSON COUNTY

H. P. HEIDELBERG	Pascagoula
M. B. CUMBEST	Pascagoula
E. E. FLURRY	Perkinston
E. V. SUTHOFF	Moss Point
A. F. MEGEHEE, Co. Supt.	Pascagoula

GEORGE COUNTY

M. L. MALONE	Lucedale
M. A. EUBANKS, Co. Supt.	Lucedale





The FACULTY

TOP ROW

Julia B. Slay, _____ *Dean of Women*
 R. T. Walker, B.S. _____
 Dean of Men, Social Science
 C. O. Hinton, B.S., M.S. _____
 Vice-President, Chemistry
 B. P. Russum, B.S., M.A. _____
 Registrar, Social Science, Education
 W. G. Gregory, B.A., M.A., _____
 Mathematics
 Mrs. W. G. Gregory, B.A., B.S., M.A. _____
 Commerce
 Edna Haney, B.A., M.A., _____ *English*

BOTTOM ROW

Dorothy Brown, B.A., M.A. _____ *English*
 Terry Collette, B.S. _____ *Language*
 S. C. Beers, B.A. _____ *Mathematics, Band*
 Mrs. S. C. Beers, B.A., B.A. in Library _____
 Science Librarian
 Ruth Blanchard, B.S., M.S. _____
 Home Economics
 W. W. Eubanks, B.S., M.S. _____ *Agriculture*
 F. O. Parsons, B.S., M.S. _____
 Agriculture, First Term



at PERKINSTON

TOP ROW

Elton Dalier, B.S., M.A. _____
 Social Science, Physical Education
 Art Van Tone, B.S. _____
 Assistant Coach, Commerce
 G. B. Westerfield, B.S. _____
 Coach, Physical Education, Agriculture, Second Semester
 Harriet Fulton, B.A. _____
 Voice, Piano, Dramatics, First Semester
 Gertrude Sandrock, B.A., M.A. _____
 Voice, Piano, Dramatics, Second Semester
 Mary Locke, B.A., M.A. _____ *English*
 H. M. Ivy, Jr., B.S. _____
 Trades, Social Science, First Semester

BOTTOM ROW

W. D. Smith, B.S. _____
 Trades, Social Science, Second Semester
 W. N. Garner, B.S. _____ *Science*
 Mrs. L. R. Weeks _____ *Dietitian*
 T. G. Gipson _____ *Business Manager*
 Bill David _____ *Secretary*
 Ina Rose Holloway _____ *Cashier*
 Mrs. Amelia Evans _____ *Nurse*
 No Picture
 R. F. Rivers, B.S., M.A. _____ *Social Studies*

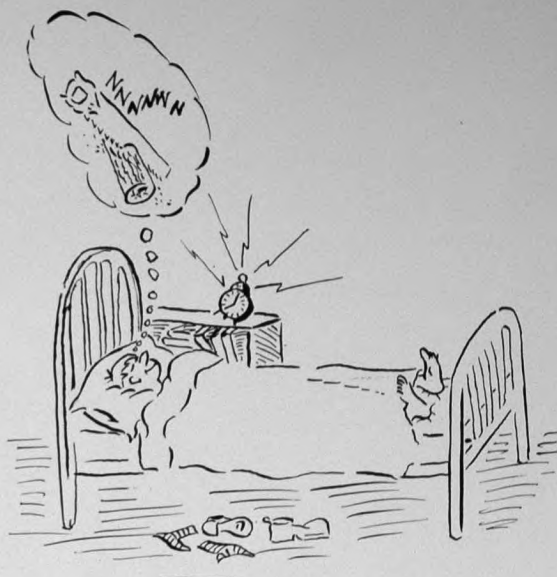
HISTORY OF *Perkinson Junior College*

Perkinson Junior College, thirty miles from the Gulf Coast, is located in Perkinston, Mississippi, in the heart of the cutover pine belt. It had its beginning in 1911 and was then known as Harrison-Stone-Jackson Agricultural High School and Junior College. In 1941 George County voted to join these counties in operating the school. The Board of Trustees, in 1942, voted to change the name to Perkins-ton Junior College since it would be too long with the addition of George.

The school opened on September 17, 1912, under the supervision of Mr. J. A. Huff with an enrollment of only sixty-two students. With the increasing number of students, the enrollment this year is approximately three hundred. At first there were three buildings, a boys' dormitory, a girls' dormitory, and the Administration Building, now the Science Building. The number has increased to fourteen, including the Administration Building with offices, classrooms, and auditorium; Science Building with adequate laboratory space, a fully equipped apartment in connection with the Home Economics Department; a library annex with classrooms and laboratories; a trades building; five dormitories; a gymnasium; well equipped music and dramatic departments; a president's home; homes for professors; and necessary barns and garages for the Agricultural Department. Also an important part of the school is the Physical Education Department which consists of a gymnasium, two concrete tennis courts, a football stadium, a baseball diamond, a large playground, and a track field.

Because of the increase in enrollment, excellent equipment, and decided progress, the four counties have a right to be proud of Perkins-ton Junior College.

II. *The* C L A S S E S



*How troublesome are classes!
They call us from our sleep.*

The SOPHOMORE CLASS

Again another Sophomore class leaves behind two years of work and play to meet an ever-changing environment. Though diminished in size, the goal is still larger—to face the future “eyes front, chin-up,” to prepare a warlike world—peace in all lands as in this great land of ours.

BAUGHN, JAMES ——— Greenwood, Miss.
“Mink”

“P” Club, ‘42; Pres, ‘43; Football, ‘42, Captain, ‘43; Basketball, ‘43; Social Recreation Committee, ‘43; Student Council, ‘43; Annual Court, ‘43.

BAYLESS, ELISE ——— Bay Springs, Miss.
“Giggles”

Y.W.C.A. Pianist, ‘42, Historian, ‘43; Glee Club Accompanist, ‘42, ‘43; Orchestra, ‘42, ‘43; Band, ‘42, ‘43; Dramatic Club, ‘42, Pres., ‘43; B.S.U., ‘42, ‘43; B.Y.P.U. Pres., ‘43; Pep Squad, ‘42; Sophomore Reporter, ‘43; Tumbling Team, ‘43; Queen of Annual Ball, ‘43.

OFFICERS

LEE ROY WEEKS ——— President
JAMES HUDGENS ——— Vice-President
WILMA PROFFITT, ——— Secretary-Treasurer
ELISE BAYLESS ——— Reporter
MISS TERRY COLLETTE ——— Sponsor



BRENT, JAMES ——— Biloxi, Miss.
“Killer”

Camera Club, ‘42, ‘43; Glee Club, ‘42, ‘43; Y.M.C.A., ‘42, ‘43; Band, ‘42, ‘43; B.S.U., ‘42, Pres., ‘43.

BYRD, La NORA ——— Howison, Miss.
“Dunkus”

Y.W.C.A. Historian, ‘42, Pres., ‘43; Commercial Club Secretary, ‘42, ‘43; Wesley Program Chairman, ‘42, Vice Pres., ‘43; Pep Squad, ‘42; Glee Club, ‘42; F.T.A., ‘43.

CASSANOVA, EARL ——— Biloxi, Miss.
Phi Theta Kappa, ‘42, ‘43; Camera Club, ‘42; Newman Club, ‘42; Most Sophisticated Sophomore, ‘43.

CLEMONS, DOROTHY ——— Pensacola, Fla.
“Dolly”

Y.W.C.A., ‘42, ‘43; Camera Club Reporter, ‘43; B.S.U., ‘42, ‘43; Spanish Club Program Chairman, ‘43; B.Y.P.U., ‘42, ‘43; Commercial Club, ‘42, ‘43.

COOK, DOROTHY ——— Wiggins, Miss.
“Dot”

Y.W.C.A. Chorister, ‘42, Program Chairman, ‘43; B.S.U., ‘42, ‘43; Debate (lettered), ‘42; Dramatic Club, ‘42, Reporter, ‘43; Glee Club, ‘42, ‘43; Pep Squad, ‘42, ‘43; Tumbling Team, ‘43.



COOK, MARJORIE ——— Pensacola, Fla.
“Cookie”

I.R.C., ‘42, Sec.-Treas., ‘43; Annual Staff Associate Editor, ‘43; Y.W.C.A., ‘42, Treasurer, ‘43; Christian Council, ‘43; Camera Club, ‘42, Secretary, ‘43; Pep Squad, ‘42, ‘43; Presbyterian Club, ‘42, Pres., ‘43; Tumbling Team, ‘43; Dean of Women, Student Day, ‘43.

EASTERLING, MAURINE ——— Merrill, Miss.
Y.W.C.A., ‘42, Typist, ‘43; Wesley, ‘42, ‘43; Commercial Club, ‘42, Pres., ‘43; Pep Squad, ‘42, ‘43; I.R.C., ‘43; Phi Theta Kappa Sec., ‘43.

HAMILTON, COLLEEN ——— Gulfport, Miss.
“Wilbur”

Y.W.C.A., ‘42, Typist, ‘43; B.S.U., ‘42, ‘43; Commercial Club, ‘42, ‘43; Pep Squad, ‘42; Phi Theta Kappa, ‘43; B.Y.P.U., ‘42, ‘43.

HANSON, IRENE ——— Pass Christian, Miss.
Phi Theta Kappa, ‘43; Band, ‘42, ‘43; Newman Club, ‘42, Reporter, ‘43; French Club, ‘43; Camera Club, ‘43; I.R.C., ‘43; Y.W.C.A., ‘42, ‘43.

HAVARD, MARY ——— Lucedale, Miss.
Phi Theta Kappa, ‘42, Reporter, ‘43; Y.W.C.A., ‘42, ‘43; Wesley, ‘42, Sec.-Treas., ‘43; I.R.C., ‘42, ‘43; Social Arts Club Historian, ‘42, Sec.-Treas., ‘43; Glee Club, ‘42, ‘43.

HEIDELBERG, CALVIN ——— Pascagoula, Miss.
“Monkey”

HENDERSON, JUANITA ——— San Pedro Sula, Honduras
Commercial Club, ‘42, Vice-Pres., ‘43; Y.W.C.A., ‘42, ‘43; Catholic Club, ‘43.

HINTON, MARGIE ——— Wiggins, Miss.
“Gluck”

Y.W.C.A., ‘42, ‘43; Commercial Club, ‘43; Band, ‘42; Glee Club, ‘42, ‘43; Homecoming Court, ‘42, ‘43; Social Recreation Committee, ‘42; Cheerleader, ‘43; Tennis (lettered), ‘42; Pep Squad, ‘42; Tumbling Team, ‘43.

HUDGENS, JAMES ——— Theodore, Ala.
Y.M.C.A., ‘42, Pres., ‘43; Vice-Pres. Sophomore Class; Phi Theta Kappa, ‘42, Vice-Pres., ‘43; Glee Club, ‘42, ‘43; Debate (lettered), ‘42; Dramatic Club, ‘42, Treas., ‘43; French Club, ‘42, ‘43; Wesley, ‘43.

JACKSON, BETTIE ——— Perkinston, Miss.
Y.W.C.A., ‘42, Typist, ‘43; Glee Club, ‘42, ‘43; Pep Squad, ‘42; Presbyterian Club Treasurer, ‘43; Commercial Club, ‘42, ‘43; F.T.A., ‘43.

JACKSON, JOHN ——— Norco, La.
Football, ‘42, (lettered), ‘43; Newman Club, ‘42, ‘43; Student Council, ‘43; “P” Club, ‘43; Dramatic Club, ‘43; Annual Ball King, ‘42; Most Handsome Boy, ‘42, ‘43.

JONES, ALEEN ——— Pelahatchie, Miss.
Phi Theta Kappa, ‘43; I.R.C., ‘43; Social Arts, ‘42, ‘43; B.S.U., ‘42, ‘43; Debate Team, ‘42, (lettered); Glee Club, ‘42, ‘43; Y.W.C.A., ‘42, ‘43; Pep Squad, ‘42.

JONES, MAURICE BISHOP ——— Pensacola, Fla.
“Bill”

Y.M.C.A. Treas., ‘42, ‘43; Wesley, ‘42, ‘43; Basketball, ‘42; Football (lettered), ‘42; All State Second Team, ‘43; F.T.A., ‘42, ‘43; “P” Club, ‘42, ‘43; Camera Club, ‘43; I.R.C. Reporter, ‘43; Social Recreation Committee, ‘43; Glee Club, ‘43; Annual Ball Court, ‘43; Best Athlete, ‘43.



KEEL, RONALD _____ De Lisle, Miss.

"Ronnie"

Phi Theta Kappa, '42, Pres., '43; I.R.C., '42, Vice-Pres., '43; Newman Club, '42, '43; Y.M.C.A., '42, '43.

KRESTENSEN, JAMES _____ Boston, Mass.

"Kertry"

Band, '42, '43; Y.M.C.A., '42; Wesley, '43; Camera Club, '42, Pres., '43.

KROHN, L. A. _____ Wiggins, Miss.

"Kroby"

Football, '42, (lettered), '43; B.S.U., '42; "P" Club, '43; I.R.C., '43; Annual Court, '43.

LADNER, ALGA _____ Wiggins, Miss.

Y.W.C.A., '42, '43; Glee Club, '42, '43; Cheerleader, '43; Homecoming Court, '43; Dramatic Club, '43; Pep Squad, '42, '43; Tumbling Team, '43.

MCMURTRAY, JAMES _____ Ocean Springs, Miss.

Agriculture Club, '42, Pres., '43; Phi Theta Kappa, '43; Newman Club, '42, Pres., '43; Spanish Club, '42, Pres., '43; Agriculture Club, '42, Program Committee, '43; Annual Staff Photographic Editor, '43; Christian Council, '43; State Exam Trig., '42.

O'NEAL, DOROTHY _____ Saucier, Miss.

"Dot"

Y.W.C.A. Treas., '42, Vice-Pres., '43; Pep Squad, '42; Glee Club, '42, Pres., '43; Wesley, '42; Pres., '43; Camera Club, '43; F.T.A., '43; Sextette, '42.

POLK, WILLIAM _____ Centerville, Miss.

"Billy"

French Club, '42, '43; Presbyterian Club, '43; Y.M.C.A., '43; I.R.C., '43.

PROFFITT, WILMA _____ Lexington, Ky.

"Willie"

Y.W.C.A., '42, '43; Chorister, '43; Band Drum Major, '42, '43; Dramatic Club, '41, '43, Pres., '43; Freshman Class Reporter, '42; Girl, '39, '41; Annual Staff, '41, '42; Social Art Club, '38, '41; Annual Ball Court, '42, '43; Sec-Treas., Sophomore Class, '43; Court Couple (girl), '37, '41; Tennis (lettered), '40, '42; Homecoming Court, '39; Tumbling Team, '43 Captain.

The SOPHOMORES

RAMSAY, CATHERINE _____ Wiggins, Miss.

"Ramsey"

Glee Club, '42, '43; Pep Squad, '42; Commercial Club, '43; Y.W.C.A., '42, '43; B.S.U., '43; F.T.A. Reporter, '43.

ROBERTS, GERALDINE _____ Ocean Springs, Miss.

"Gerry"

F.T.A. Pres., '43; Glee Club, '42, '43; Dramatic Club, '43; Y.W.C.A., '42, '43; Pep Squad, '42; Sextette, '42.

RUIZ, VICTOR _____ San Jose, Costa Rica

"Vic"

Camera Club, '42, Treas., Pres., '43; Y.M.C.A., '43; Newman Club, '42, Vice-Pres., '43; Spanish Club, '42, Pres., '43; Agriculture Club, '42, Program Committee, '43; Annual Staff Photographic Editor, '43; Christian Council, '43; State Exam Trig., '42.

RUSSUM, FRANK _____ Perkinson, Miss.

"Frankie"

Student Council, '42, Pres., '43; Y.M.C.A., '42, Sec., '43; "P" Club, '42, '43; Dramatic Club, '42, '43; Spanish Club, '42, Sec-Treas., '43; Tennis, '42, '43 (lettered); Band, '42, '43; Annual Court, '43.

RUSSUM, MARILYN _____ Valley, Miss.

"Mimie"

Band, '42, '43; Dramatic Club, '42, '43; Glee Club, '42, '43; Camera Club, '43; F.T.A. Sec-Treas., '42; Social Recreation Committee, '42; Y.W.C.A. Council, '42, '43.

SAAB, GEORGE _____ Canton, Miss.

"George"

Orchestra, '42, '43; Band, '42, '43; Newman Club, '42, Pres., '43; Phi Theta Kappa, '42, '43; I.R.C., '42, '43.

SAUCIER, BERNICE _____ Saucier, Miss.

"Bernie"

Y.W.C.A., '42, '43; B.S.U., '42, '43; Pep Squad, '42, '43; B.Y.P.U., '42, '43; F.T.A., '42, '43; Social Arts Club, '42, '43.



TRAVIS, DOROTHEA _____ Hattiesburg, Miss.

"Travis"

Y.W.C.A., '42, '43; Glee Club, '42, '43; Commercial Club, '43; B.S.U., '42, '43; Christian Council, '43; Pep Squad, '42, '43; Tumbling Team, '43.

WALKER, WILLIAM _____ Miss. City, Miss.

"Bill"

Y.M.C.A., '42, Vice-Pres., '43; Debate Team (lettered), '42; Wesley, '42, '43; Spanish Club, '42; Student Council, '42, Vice-Pres., '43.

WALTON, GLORIA _____ Moss Point, Miss.

"Dodo"

Student Council Sec-Treas., '43; Annual Staff Editor, '43; Social Recreation Committee Sec., '43; Phi Theta Kappa, '42; Historian, '43; I.R.C., '43; Y.W.C.A. Cabinet, '42; Secretary, '43; French Club Vice-Pres., '43; Dramatic Club, '42, Sec., '43; Band, '42, '43; Glee Club Reporter, '43; Wesley, '42, '43; Homecoming Court, '42; Tumbling Team, '43; Annual Ball Court, '42, '43; Freshman Class Sec-Treas., Most Versatile Girl, '43; Most Popular Girl, '43; Prettiest Girl, '43; State Health, '42.

WEEKS, LEE ROY _____ Perkinson, Miss.

"Sonny"

"P" Club, '42, '43; Tennis (lettered), '43; Y.M.C.A., '40, '43; Annual Ball Court, '43; Catent Couple (boy), '43; Dramatic Club, '43, '43; President of Sophomore Class, '43; Head Cheerleader, '42, '43; Business Manager Annual Staff, '43; I.R.C., '43.

WESSON, WILLIAM HAROLD _____ Corinth, Miss.

"Willie"

Student Council Pres., '42; Y.M.C.A., '41, '43, Pres., '42; "P" Club, '41, '43; Vice-Pres., '42; Football (lettered), '42, '43; Basketball (lettered), '41, '43; Baseball, '41; Dramatic Club, '43; Sophomores Class Play, '42; Glee Club, '43; I.R.C., '43; B.S.U., '42, Sec., '43; Annual Ball Court, '42; Most Versatile Boy, Most Courteous Boy, '42; B.Y.P.U. Director, '41, '42; Christian Council, '42; Vice-Pres. Student Day, '42; Most Versatile Boy, Most Popular Boy, Friendliest Boy, Most Courteous Boy, '43.

SAUNDERS, NINA _____ Gulfport, Miss.

Phi Theta Kappa, '43; I.R.C. Pres., '43; Y.W.C.A., '42, '43; Glee Club, '42, '43; Pep Squad, '42.

SCOTT, ELROY _____ New Orleans, La.

Football, '42 (lettered), '43; "P" Club, '43; Newman Club, '42, '43; Glee Club, '42, '43.

SPENCE, GEORGE _____ Biloxi, Miss.

"King"

Agriculture Club, '42, '43; I.R.C., '43; Y.M.C.A., '42, '43; Y.W.C.A., '42, Program Chairman, '43; Band, '42, '43; Social Arts Club, '42, Pres., '43; Social Recreation Committee, '43; Sophomore Representative Annual Staff, '43; Homecoming Queen, '43; Most Courteous Girl, '43; Tumbling Team, '43; Annual Ball Court, '43.

STILL, JAMES _____ Panama City, Fla.

"Jimie"

Football, '42 (lettered), '43; Basketball, '42 (lettered), '43; "P" Club, '42, '43; B.S.U., '42.

STRANGE, KENNETH _____ Gulfport, Miss.

"Strange"

Y.M.C.A., '42, '43; Commercial Club, '43.

TARZETTI, KENNETH _____ De Lisle, Miss.

"Tar"

"P" Club, '43; Basketball, '42 (lettered), '43; French Club, '42, Pres., '43; Newman Club, '42, '43; Football, '43 (lettered); Phi Theta Kappa, '42; King of Annual Ball, '43; Pres. Student Day, '43.

TORRES, GLEN _____ Moss Point, Miss.

Wesley, '42, '43; Band, '42, '43; Y.M.C.A., '42, '43; Phi Theta Kappa, '43.



Soph. SNAPS

*What's up?
Garbage
Tete-a-tete*

*Hey, did the bell
ring?
No, not Jimmy!!*

*'Smatter, boys?
Old faithful*

*Whatch' got there?
Over socializing
Checkered Shade*

*Soup's on
T'aint funny*

The FRESHMAN CLASS

The Freshman year—so deeply dreaded for its ordeals at the hands of the upper-classmen, hell week, shaved heads; filled with fun in general; crowded with mid-term exams, research papers, and that final drive—then another year gone.

Many Freshman enrolled not knowing whether they would be able to finish the year or not. Some have joined the armed forces. Others, in reserves, are doing fine work and are looking forward to their Sophomore year at Perk.

OFFICERS

BILL MAY *President*
FRED A LONG *Vice-President*
RUTH LADNER *Secretary-Treasurer*
GEORGE FELL *Reporter*
MISS MARY LOCKE *Sponsor*



The FRESHMAN CLASS

ANDERSON, JOE _____ Biloxi, Miss.

ANDRESS, WINNIFRED _____ Wiggins, Miss.
Spanish Club, Camera Club, Y.W.C.A.

ALCERRO, ARGENTINA _____
Honduras, Central America
Y.W.C.A.; Vice Pres. Spanish Club; Commercial Club;
Newman Club.

BATSON, MARY ELAINE _____ Wiggins, Miss.
Y.W.C.A.; '38-'41; B.S.U.; Cabinet, '42, '43; Annual
Ball Court, '42, '43; Prettiest Girl, '42; Class President,
'40, '41; Homecoming Court, '43; Band, '39-'43; Major-
ette, '42, '43; Glee Club, '42, '43; Social Arts, '38-'42;
Annual Staff, '42; Club and Feature Editor, '43; State
Exam in Plane Geometry and Algebra.

BATSON, WENTZ _____ Perkinston, Miss.
Agriculture Club.

BENIGNO, LUKE FRANK _____ Bay St. Louis, Miss.
Catholic Club, Band, Orchestra.

BENNETT, WILLIE PEARL _____
Mississippi City, Miss.
Y.W.C.A., '42, '43; Wesley, '42, '43; Pep Squad, '42,
'43; Commercial Club, '43.

BRELAND, BERNICE MAE _____ Perkinston, Miss.
Commercial Club, '43; Pep Squad, '42, '43; Literary
Exam in Typing, '42.

BRELAND, LOIS EDITH _____ Perkinston, Miss.
Commercial Club; B.S.U.

BRYANT, ELOISE JANETTE _____ Wiggins, Miss.
Commercial Club, Y.W.C.A., B.S.U.

BUFFUM, ROBERT _____ Gulfport, Miss.
"R. D."
Y.M.C.A., Football.

COVICH, JERRY _____ Biloxi, Miss.
"Kovac"

COX, VIRGINIA _____ Gautier, Miss.
"Peep"

Y.W.C.A., Camera Club, Pep Squad, French Club.

CREEL, JOSEPH LEE _____ Biloxi, Miss.
"Jog"
Camera Club, '42, Vice-Pres., '43.

CULLEN, PRESTON _____ Gulfport, Miss.
Presbyterian Club, Y.M.C.A., Phi Theta Kappa.

DANIELS, MARJORIE WANDA _____
Perkinston, Miss.
Commercial Club, '43; Pep Squad, '41-'43; B.S.U.;
First Place State Exam in English, '41; Second Place
in English, '42; Dramatic Club, '42, '43.

DAVIS, JOHN ARCHIE _____ Moss Point, Miss.
Football, '43.

DEVORE, MARY _____ Mobile, Ala.
Commercial Club, Presbyterian Club.

DEWS, BURNS _____ Hattiesburg, Miss.
Football, "P" Club, Basketball, Social Recreation Com-
mittee, Annual Staff, Annual Ball Court, Best Dressed
Boy, Student Council, Phi Theta Kappa, Vice-Pres.
Student Day.

ELDRIDGE, CARMEN _____ Wiggins, Miss.
Y.W.C.A., Spanish Club, Glee Club, B.S.U.

EUBANKS, MINNIE RUTH _____ Lucedale, Miss.
"Min"
Y.W.C.A.; Vice-Pres. of B.Y.P.U.; Christian Council;
Pep Squad; Glee Club; Social Arts Club.

FAYARD, ALBERTA CHRISTINE _____
Pass Christian, Miss.
French Club, Newman Club, Y.W.C.A.

FELL, GEORGE _____ Pensacola, Fla.
Presbyterian Club, Secretary; Reporter of Class (second
semester); Y.M.C.A., Vice-Pres. (second semester).

FERNANDEZ, RODRIGO _____ Costa Rica, Central A.



The FRESHMAN CLASS

HAVARD, TOM _____ Lucedale, Miss.
Football.

HOLDEN, ANN VIOLA _____ Ocean Springs, Miss.
Camera Club, F.T.A., Y.W.C.A., B.S.U.

HOLLEMAN, BILLIE RUTH _____ Wiggins, Miss.
B.S.U., Commercial Club, Social Arts Club, Y.W.C.A.,
Glee Club.

JAMES, LEE ROY _____ Gulfport, Miss.
"Jiggs"
Football, Presbyterian Club, Y.M.C.A.

KITE, JOHN _____ Gulfport, Miss.
Band.

LADNER, RUTH _____ Pass Christian, Miss.
Pep Squad, Social Arts Club, Camera Club, B.S.U.,
Secretary of Class, Y.W.C.A., Glee Club.

LASSITER, WILLIAM _____ Lucedale, Miss.
Band, Orchestra, Phi Theta Kappa.

LEE, ROBERT _____ Saucier, Miss.
Basketball, Y.M.C.A.

LIZANA, VERBY LUCILLE _____ Lyman, Miss.
Y.W.C.A., Newman Club, French Club, Commercial
Club.

LLOYD, CLAUDE _____ Gulfport, Miss.
Y.M.C.A., Class Reporter, French Club, Basketball.

LONG, FRANCES _____ Biloxi, Miss.
Y.W.C.A., '41-'43; Freshman Program Chairman; B.S.U.
Treas. '42, '43; Commercial Club, '42, '43; Cheerleader,
'42, '43; Social Arts, '43; Pep Squad, '41-'43; Dramatic
Club, '42, '43; Class Secretary, '41, '42; Literary Com-
mittee, English, '41; Government, '42; Annual Court, '43.

LONG, FRED _____ Biloxi, Miss.
Y.W.C.A., '41-'43; Dramatic Club, '41-'43; Vice-Pres.
of Freshman Class; Pep Squad Leader, '43; Band, '41;
Glee Club, '41-'43; B.S.U.; Commercial Club; Literary
Exam. History, '41; Cheerleader, '42; Reporter of Junior
Class; Treas. of Senior Class; Annual Court, '43.

MADDOX, SIDNEY _____ Long Beach, Miss.

MARTINEZ, ROBERTO _____ Honduras, Central America
Spanish Club, Camera Club, Catholic Club.

MAY, WILLIAM WEMBERLY _____ Meridian, Miss.
"Bill"
Y.M.C.A., Glee Club, Class President, Cheerleader, Most
Typical Freshman.

McLEOD, MABEL IRENE _____ Pensacola, Fla.
Camera Club, Pep Squad, B.S.U., Commercial Club,
Y.W.C.A.

NEILSON, MARTINE _____ Pensacola, Fla.
"Tiny"
Wesley; Y.M.C.A., Secretary.

NIOLET, ERNETT _____ Pass Christian, Miss.

NIOLET, HERMAN _____ Pass Christian, Miss.

PARKER, HOWARD _____ Perkinston, Miss.
"Scotty"
Agriculture Club, '42, '43.

PETERMAN, RICHARD HAROLD _____ Lyman, Miss.
"Richie"
Y.M.C.A.; Sec.-Treas. of French Club.

PIPER, LAETITIA JANE _____ Mobile, Ala.
"Tish"
French Club, Dramatic Club, Social Recreation Com-
mittee, Student Council, President of Pep Squad, Glee
Club, Y.W.C.A., Friendliest Girl.

PITALO, GEORGE _____ Biloxi, Miss.
Newman Club, French Club.

POWELL, ROSE MARIE _____ Hattiesburg, Miss.
Y.W.C.A., Vice-Pres. of Wesley, Commercial Club.



The FRESHMAN CLASS

RAINEY, FRED ROY _____ Pensacola, Fla.

"Dictator"
Y.M.C.A., '39-'43; Student Council, '49-'43; Cheerleader, '41-'43; Social Recreation Committee, '42, '43; Pres. of Junior and Senior Classes; Literary Exam, First in Arithmetic, '40; First in Geometry, '41; First in 2nd Year Algebra, '42.

REAMS, MARY ELIZABETH _____ Franklin, Tenn.
Wesley, Commercial Club, Y.W.C.A.; I.R.C.

ROBERTS, LUCILLE _____ Lucedale, Miss.
Spanish Club, Glee Club, Y.W.C.A., B.S.U., Phi Theta Kappa.

ROBERT, WINIFRED _____ Perkinston, Miss.
Glee Club, B.S.U., Y.W.C.A.

ROBINSON, HERBERT _____ Gulfport, Miss.
"Herbie" and "Queenie"
Annual Staff, Glee Club.

ROLLINS, JOHN FLETCHER _____ Centerville, Miss.
"Red"
Football, "P" Club, Y.M.C.A.

ROUSE, ETHEL WINNIE _____ Gautier, Miss.
Y.W.C.A., B.S.U., Glee Club, Social Arts Club.

SANDERS, BOBBY _____ Pensacola, Fla.
Camera Club.

SAUCIER, TALMADGE BERNARD _____
Saucier, Miss.
Y.M.C.A.

SCOTT, EDGAR LEE _____ Pascagoula, Miss.
Camera Club, Y.M.C.A., B.S.U.

SEYMOUR, SHIRLEY ROSE _____ Biloxi, Miss.
Pep Squad, Newman Club, Commercial Club, Y.W.C.A., Phi Theta Kappa.

STOJICICH, JOHN _____ Biloxi, Miss.

STROTHER, FAY _____ Mississippi City, Miss.
"Pug"

Y.W.C.A., Program Chairman of Social Arts Club, Sec. Treas. of F.T.A.

SUTTON, MARY ANN _____ Gulfport, Miss.
"Shorty"
Social Recreation Committee, Glee Club, Y.W.C.A., Homecoming Court.

TAYLOR, ELNA GENE _____ Wiggins, Miss.
Pep Squad, Commercial Club, Y.W.C.A.

TRENCHARD, SARAH CATHERINE _____
New Orleans, La.
Y.W.C.A., Wesley, Commercial Club, Annual Staff, Tumbling Team, Phi Theta Kappa.

UCLES, ENRIQUE _____ Honduras, Central A.

VIERLING, WILLIAM _____ Biloxi, Miss.
"Buddy"

WALKER, SIBYL _____ Mississippi City, Miss.
Y.W.C.A., Wesley, Social Arts Club, Vice-Pres. of F.T.A., Glee Club, Pep Squad, Phi Theta Kappa, Vice-Pres. of I.R.C.

WATKINS, TROY _____ Biloxi, Miss.

WATTS, FRANK BETHEA _____ Wiggins, Miss.
Y.M.C.A., Camera Club, B.S.U.

WILLIAMS, GEORGE ANN _____ Biloxi, Miss.
Y.M.C.A., Camera Club, French Club, Pep Squad, Phi Theta Kappa.

YDIGORAS, MIGUEL _____ Guatemala, Central A.
"Mike"
Spanish Club, Newman Club.

YEAGER, LEROY _____ Wiggins, Miss.
"Monk"
Football, "P" Club.





Frosh
LIFE

Praise Allah!
Come on, Donahoe
Hi, Luke

*Mama, buy me one
of those.*

Hey—you can't do that!

Come on, Enrique!

Better Hurry!

Help! Murder!

*He, He, He — I
flunked another
one.*

Good Lookers

'Taint So

"Jungle Monkeys"

The HIGH SCHOOL



The HIGH SCHOOL SENIORS

OFFICERS

BILL HENDERSON _____ President
 ROBERT McDANIEL _____ Vice-President
 JUNE SNEDEN _____ Secretary-Treasurer
 WILMA BLACKWELL _____ Reporter
 MRS. S. C. BEERS _____ Sponsor

ANDERSON, BARBARA _____ Atlanta, Ga.
"Bobby"

Glee Club, Presbyterian Club, Y.W.C.A.

ABBOT, HOPE _____ Holifoto, Costa Rica
 Social Arts Club, '42; State Exam English, '42; Pep
 Squad, '43; Y.W.C.A., '42, '43; Presbyterian Club,
 '43.

ALEXANDER, JEAN _____ Perkinston, Miss.
 Social Arts Club, '42; State Exam American History,
 '42 (1st place); Glee Club, '42, '43.

BLACKWELL, WILMA _____ Saucier, Miss.
"Shortie"

Glee Club, Pep Squad, Wesley, Y.W.C.A., Class Re-
 porter.

CHILLET, ROSA _____ Roca De El Salvador, C. A.
 Glee Club.

CLARK, BEATRICE _____ Biloxi, Miss.
"Dixie"

B.Y.F.U., Glee Club, Pep Squad, Y.W.C.A.

COBB, BERTHA MAE _____ Wiggins, Miss.

CRAWFORD, WALTER _____ Birmingham, Ala.
 Agriculture Club, Y.M.C.A.

CRECELUS, BARBARA _____ Crawfordsville, Indiana
"Chris"
 Presbyterian Club, '43; Social Arts Club, '42; Social
 Recreation Committee, '42; Y.W.C.A., '43.

DAMIS, LOIS _____ Bond, Miss.
"Tennessee"

Glee Club, '42; Social Arts Club, '42; State Exam Home
 Economics, '42.

DAVIS, KATHRYN _____ Vancleave, Miss.
 B.S.U., Pep Squad, Y.W.C.A.

EVANS, ALICE _____ Gulfport, Miss.
 Presbyterian Club Reporter, '43; Class Reporter, '43;
 Y.W.C.A., '42, '43.

HATTEN, ANNETTE _____ Perkinston, Miss.
 Glee Club, '42, '43; Social Arts Club, '42; State Exam
 English, '42; Wesley, '43.

HENDERSON, WILLIAM BURT _____ Biloxi, Miss.
"Willie"

Annual Staff; Camera Club; Class Vice-Pres. (first
 semester), Pres. (second semester).

HEPLER, GENE ANN _____ Waveland, Miss.
"Gene"

Commercial Club, Debating Club, Glee Club, Y.W.C.A.

HINTON, WILLIAM H. _____ Perkinston, Miss.
"Billy"

Football, '43; Y.M.C.A., '42, '43; State Exam Chemis-
 try, '42.

HOWELL, ALFRED _____ Howison, Miss.
"Fred"

Camera Club, Glee Club, Y.M.C.A.

HOWELL, VIRGINIA _____ Howison, Miss.
"Nickey"

Debate Club, Dramatic Club, Glee Club, Class Secretary,
 Social Arts Club, Y.W.C.A.

MENESE, DOROTHY _____ Memphis, Tenn.
"Dot"

Camera Club, Glee Club, Pep Squad, Presbyterian Club,
 Y.W.C.A.

OVERTON, EVA _____ Ocean Springs, Miss.
 B.S.U., Pep Squad, Y.W.C.A.

PERKINS, DAVID _____ Bond, Miss.
"Buggs"

Football and Basketball Manager, Football.

PITCHER, JANIS _____ Biloxi, Miss.
 Glee Club, '43; Newman Club, '42, Sec.-Treas., '43; Pep
 Squad, '43; Social Arts Club, '42; Y.W.C.A., '42, '43;
 Best Girl Dancer, '43.

POLK, MARGARET ANN _____ Centerville, Miss.
"Sis"

Annual Staff; Christian Council; Glee Club; Pep Squad;
 Class President; Social Arts Club, Reporter; Y.W.C.A.

PRICE, FAYE _____ Wiggins, Miss.

RITTER, DAVID _____ Bananera, Guatemala
"Gump"

RITTER, FRED _____ Bananera, Guatemala
"Sonny"

B.S.U., Vice-Pres., '43; B.Y.F.U., '42, '43; Class Presi-
 dent, '42; "P" Club, '43, '43; State Exam Agriculture 11
 (4th place), '42; Y.M.C.A., '43.

SNEDEN, JUNE _____ Sulphur Springs, Texas
"Shorly"

Christian Council, '43; "Miss Home Economics", '42;
 Pep Squad, '42, '43; Secretary Class, '42, '43; Pres-
 byterian Club, Vice-Pres., '43; Social Arts Club, '42;
 State Exam English, '42; Y.W.C.A., '42, '43.

SPAVIN, BLANCHE _____ Pascagoula, Miss.
 Glee Club, Newman Club, Y.W.C.A.

ST. AMANT, JOHN _____ Biloxi, Miss.
 Head Drum Major, '43.

STRIBBLING, GLEN _____ Gulfport, Miss.
"Strib"

Band (assistant director); Dramatic Club; Y.M.C.A.





The HIGH

OFFICERS

BILLY BATSON *President*
 ROSEMARY GUTIERREZ *Vice-President*
 ELIZABETH ANN WEEKS *Secretary-Treasurer*
 LOUISE WARD *Reporter*
 MISS ELTON DALIER *Sponsor*

SCHOOL JUNIORS

ALDERMAN, FRANCES Gulfport, Miss.
 B.S.U., Y.W.C.A.

ASTLEFORD, C. A. Biloxi, Miss.
"T-Way"

BATSON, BILLY Perkinston, Miss.
 Class President.

BATSON, ELIZABETH ANN Pensacola, Fla.
"Lisa"
 Class Reporter; B.S.U.; Social Arts Club, Y.W.C.A.
 Program Chairman.

CANEDA, EVELIO E. Havana, Cuba
"Cuban"
 Camera Club, '42, '43; Spanish Club, '42, '43.

CANNON, VIRGINIA LEE Biloxi, Miss.
 Y.W.C.A. *"Shorty"*

DAVIS, WANDA Perkinston, Miss.
"Pee Wee"
 Band, Glee Club, Y.W.C.A.

DENSON, GLEN Wiggins, Miss.

FERNANDEZ, ALVARO San Jose, Costa Rica
 Spanish Club.

FOSTER, NEVA PEARL Perkinston, Miss.

GILLIS, MARTHA JO Biloxi, Miss.
 Y.W.C.A. Pianist. *"Jo"*

GUTIERREZ, ROSEMARY New Orleans, La.
"Kitty"
 Class Vice-Pres., Newman Club, Pep Squad, Y.W.C.A.

HOYT, CAROLYN New Orleans, La.
 Camera Club, Glee Club, Pep Squad, Wesley, Y.W.C.A.

JOHNSON, ILA FRANCES Saucier, Miss.
"Ronnie"
 Social Arts Club, Vice-Pres., Wesley, Y.W.C.A.

MENDEZ, AUDREY Edgewater Park, Miss.
"Jimmie"
 Glee Club, Newman Club, Y.W.C.A.

PAGE, HORACE EDGAR Gulfport, Miss.
"Tubby"
 B.S.U., Y.M.C.A.

RIVERA, AUGUSTA Guatemala City, Guatemala
 Newman Club, Spanish Club, Y.M.C.A.

ROSENBLATT, EDNA DEL Edgewater Park, Miss.
 Spanish Club, Y.W.C.A.

SANTA CRUZ, ERLYNE Biloxi, Miss.
"Lynn"
 Debating Club, Newman Club, Pep Squad Majorette,
 Social Arts Club, Y.W.C.A.

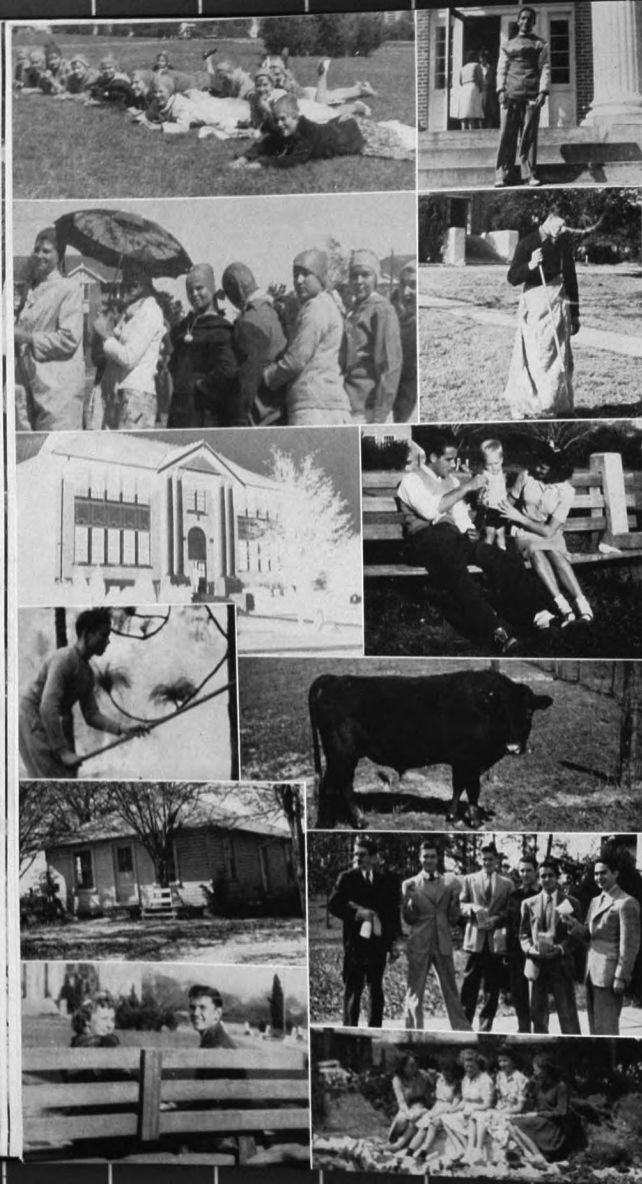
STROTHER, GEORGE Mississippi City, Miss.
"Buddy"
 Camera Club.

TAQUINO, HELEN Gulfport, Miss.
"Killer"
 Wesley, Y.W.C.A.

WARD, LOUISE Biloxi, Miss.
 Wesley, Y.W.C.A. *"Slippy"*

WEEKS, ELIZABETH ANNE Perkinston, Miss.
"Six"
 Wesley, W.W.C.A., Class Secretary.





HIGH SCHOOL *Life*

Air Raid

*Did you dress in
the dark?*

Real silk hose!!

Last of the hours

*Snow at
"Perk"?*

*When did all
this happen?*

*Hurry up,
Johnny*

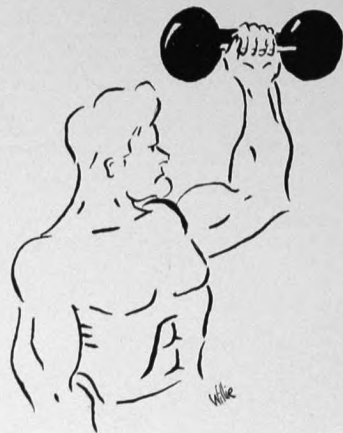
"Y" Hut

Aze, Bull!

*Hmm, It's in the
bag!*

Smile pretty

III. *Physical* E D U C A T I O N



Dumbbells + (football—classes) + basketball + intermural X
Socializing
(obstacle races ÷ first aid) = some Perk students.

P.S. Maybe it's wrong. You rework it, as we never were good in math!

Perk's BULLDOGS

The Bulldogs faced a short, but hard schedule this year. Starting the season with eleven lettermen, Coaches Westerfield and Van Tone shaped the team into the best Junior College team in the state. The boys were marked with an excellent spirit and fine co-operation, which brought them the honor of Mississippi Junior College Championship. Our team was full of star players, but none was more outstanding than the other. This was truly a team of champions.

Left to right, first row—Tom Havard, Hayes Allen, John Davis, Jimmie Haynes, James Baughn, Pat Donohoe, Ned Driggers, Burns Dews, Edwin Simpson.

Second Row—Bobby Nix, Hervey Hinson, Leroy Yeager, Bill Jones, Charlie Cain, John Rollins, Ross Gatlin, Lee Roy James, Wren Firth, Jimmie Daggett.

Third row—Head Coach Westerfield, E. T. Whittington, Charles Falkenberry, L. A. Krohn, John Jackson, Kenneth Tarzetti, Jimmie Still, Robert Buffum, Elroy Scott, Walter Whittington, Harold Wesson, Harold White, Assistant Coach Van Tone.

Not Pictured—David Perkins, Manager.

George Westerfield and Art Van Tone, both alumni of Mississippi Southern College, did an excellent job of coaching the Bulldogs into the State Championship. Westerfield produced a fast hard charging line, while Van Tone is accredited with the splendid performance of the backfield.

win the STATE Championship



SEASON

Perkinston	0	Ellisville	0
Perkinston	12	Goodman	6
Perkinston	30	Raymond	6
Perkinston	31	Wesson	6
Perkinston	20	Decatur	6
Perkinston	28	Scooba	0
Perkinston	46	Hattiesburg Air Base	0

CHEERLEADERS

Frances Long

Fred Rainey

Alga Ladner

Lee Roy Weeks,
Leader

Marjie Hinton

Bill May





A TEAM TO BE PROUD OF

LINE

BURNS DEWS, L. E. _____ All State
 WALTER WHITTINGTON, L. T. _____ All State
 PAT DONOHUE, L. G.
 JAMES BAUGHN, C. and Captain _____ All State
 JAMES HAYNES, R. G. _____ All State 2nd
 L. A. KROHN, R. T.
 KENNETH TARZETTI, R. E. _____ All State 2nd

BACKS

JAMES STILL, Q.B. _____ All State
 BILL JONES, L. H. B. _____ All State 2nd
 NED DRIGGERS, F. B.
 E. T. WHITTINGTON, R. H. B. _____ All State 2nd



Top Row:

HAYES ALLEN, L.H.B.
 CHARLES CAIN, L.H.B.
 JIMMY DAGGETT, L.E.
 JOHN DAVIS, Q.B.

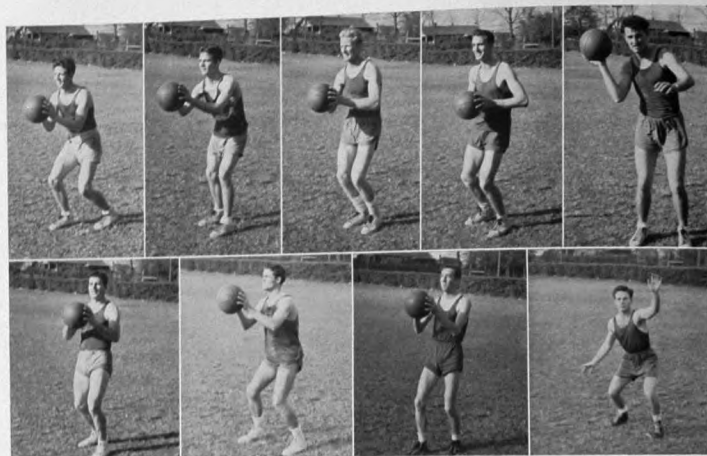
Second Row:

CHARLES FALKENBERRY, R.T.
 ROSS GATLIN, R.T.

JOHN JACKSON, L.T.
 LEE ROY JAMES, F.B.
 BOBBY NIX, R.H.B.

Third Row:

JOHN ROLLINS, L.G.
 ELROY SCOTT, C.
 EDWIN SIMPSON, Q.B.
 HAROLD WESSON, F.B.
 LEROY YEAGER, R.H.B.



B A S K E T B A L L

Top Row—Hayes Allen, Forward; Burns Dews, Guard; James Still, Guard; Kenneth Tarzetti, Center; Walter Whittington, Forward.

Second Row—James Baughn, Guard; Ned Driggers, Forward; Balter Holland, Guard; Edwin Simpson, Forward.

The basketball season this year was shortened because of the lack of transportation and the loss of one coach to the army.

SCHEDULE OF GAMES

Perkinston	34	Kessler Field	37
Perkinston	26	Poplarville	28
Perkinston	50	Camp Shelby	46
Perkinston	32	Poplarville	38
Perkinston	60	Keesler Field	48
Perkinston	43	Ellisville	53
Perkinston	33	Ellisville	36
Perkinston	35	Ellisville	34
Perkinston	39	Ellisville	31

I N T R A M U R A L S

TUMBLING TEAM

The "Super Duper Blue Devils" under the direction of Miss Elton Dalier have added much to the entertainment at Perk. They have performed for organizations and schools in Biloxi, Gulfport, Pascagoula, Moss Point, and other places in South Mississippi.



Members of the team are: Wilma Proffitt—captain, Marjorie Cook, Gloria Walton, Fay Strother, Freda Long, Rose Marie Powell, Sybil Walker, Margie Dorothea Travis, Dorothy Cook, Alga Ladner, Catherine Trenchard, Frances Long, Myrtis Stewart, and Elise Bayless. Their assistants were: Betty Jackson—Pianist, Lee Roy Weeks—Announcer, John Kite—Drummer, Rosemary Gutierrez—Team clown, and L. A. Krohn—Stage Manager.

INTRAMURAL SPORTS

A new and interesting feature of the Physical Education Program has been the directing of playground activities at the junior high school by several college girls under Miss Dalier's guidance.

First Aid Classes offered each semester have been very popular.

Archery holds a special place among spring activities.



More . . .

PING PONG
BASKET BALL

VOLLEY BALL
SOFT BALL

Because the war has brought about many changes in schools, the Physical Education Department has altered its program so that emphasis is now being placed on the many intramural activities offered in order to increase the physical fitness of students.

In addition to volley ball, soft ball, basketball, and ping pong the girls play tennis, badminton, horse shoes, deck tennis, and shuffleboard.





OBSTACLE COURSE AND TUMBLING

TUMBLING

Football holds the center of attention in the fall and basketball in the winter, but many activities are entered into by the boys in the spring. Among these are softball, horseshoes, tennis, tumbling, baseball, and racing.

A special program was outlined for army and navy reserves. One hour every day was given to drilling, running obstacle courses, taking calisthenics, and participating in many sports.

OBSTACLE COURSE

IV. *The* FEATURES





MYRTIS STEWART

HOMECOMING *The* QUEEN

Mary Elaine Batson

Margie Hinton



Alga Ladner

Mary Ann Sutton



THE MAIDS

and HER COURT

The KING and QUEEN



King: KENNETH TARZETTI
Queen: ELISE BAYLESS

of the RAINBOW ... *with* ATTENDANTS

MARY ELAINE BATSON
MYRTIS STEWART
WILMA PROFFITT
GLORIA WALTON
FREDA LONG
FRANCES LONG

JAMES BAUGHN
L. A. KROHN
LEE ROY WEEKS
BURNS DEWS
BILL JONES
FRANK RUSSUM

THE DUKES AND MAIDS

Retiring King:
JOHN JACKSON

Train Bearers:
ALGA LADNER
MARGIE HINTON



1. "LITTLE WILLIE" WESSON
Most Versatile Boy
Most Popular Boy
Friendliest Boy
Most Courteous Boy
2. "WILLIE" PROFFITT
Cutest Girl
3. "BILL" MAY
Most Typical Freshman

4. "TISH" PIPER
Friendliest Girl
5. "FUZZY" JACKSON
Most Handsome Boy
6. "LYNN" SANTA CRUZ
Best Dressed Girl
7. "COLONEL BOB" RIVERS
Best Liked Teacher



W H O ' S



W H O

1. "DODO" WALTON
Prettiest Girl
Most Versatile Girl
Most Popular Girl
2. "BILL" JONES
Best Athlete
3. "SONNY AND WILLIE"
Cutest Couple
4. "POWDER PUFF" DEWS
Best Dressed Boy

5. "RED" PITCHER
Best Girl Dancer
6. "JUG" RABORN
Best Boy Dancer
7. "MYRT" STEWART
Most Courteous Girls
8. No Picture:
EARL CASSANOVA
Most Sophisticated



KAMPUS KIDS

As Commandos, Cheerleaders, Song Directors, Fun Makers, and
"Just plain kids" Tommy Walker, Adair, Mickey, and Jackie Ivy have
made life at Perk complete.



Y. W. C. A. MANLESS WEDDING

A social affair given every other year

Bridesmaids:

LaNora Byrd, Gloria Thornton, Josephine
Buchanan, Louise Sorrels

Maid of Honor: Margie Hinton

Father: Alga Ladner

Flower Girl: Ann Baker

Groomsmen:

Myrtis Stewart, Dorothea Travis, Dorothy
O'Neal, Walline Ladner

Best Man: Mary Margaret Burns

Minister: Dorothy Bleur

Ring Bearer: Victor Gipson



Bride: COLLEEN HAMILTON

Groom: FRED A LONG

Ribbon Bearers (Not pictured):

Barbara Crecelius, Mary Elaine Batson,
Doy Evelyn Payne, Vera Stewart



STUDENT DAYS

THE ADMINISTRATION

President.....Kenneth Tarzetti
 Vice-President.....Burns Dews
 Dean of Women.....Marjorie Cook
 Dean of Men.....Walter Whittington

It has always been the policy of the school to encourage leadership and a spirit of responsibility among the students. For the past several years a special feature of this program has been Student Days. During the usual two day period students selected by popular vote have charge of the administration and the dormitories. The faculty select members of their classes to teach for them. As a result of these



days, students realize more fully the value of cooperation and the responsibilities connected with running a school.

THE FACULTY

First Row—Bayless, Hepler, Batson, Roberts, Williams, Saunders, Seymour, Clemons, Long.
 Second Row—Byrd, McLeod, Taylor, Long, Blackwell, Hamilton, Walton.
 Third Row—Picher, Sneden, O'Neal, Struther, Rouse, Weeks, Spavin.
 Fourth Row—Blackledge, Howe, Saab, Jones, Wesson, Gatlin, Hudgens, McRaney, Robinson, Astleford.
 Fifth Row—Strange, May, Hual, Torres, Lassiter.



V. The ORGANIZATIONS



Silence that dreadful bell!

STUDENT COUNCIL

The Student Council is the most democratic, inclusive and outstanding organization on the campus. It endeavors to discover and remedy the student problems, assist the discipline committee in the judgment of offenders of the school regulations, to create a cooperative spirit between students and faculty, and to promote those things that tend to make Perk a better school.

The Council consists of a president, vice-president, and secretary-treasurer from any di-

vision of the school; three representatives from the sophomore class; two from the freshman class; and one from the high school division. The members are: Frank Russum, President; Kenneth Tarzetti, William Walker (1st Semester), Vice-President; Gloria Walton, Secretary-Treasurer; Jimmy Baughn, Jimmy Haynes, John Jackson, Tom Backstrom, (1st Semester), Sophomore Representatives; Tish Piper, Burns Dews, Fred Rainey (1st Semester), Freshman Representatives; Fred Ritter, Bill Raborn (1st Semester).

First Row—Dews, Haynes, Walton, Jackson, and Ritter.
Back Row—Baughn, Tarzetti, Piper, Mr. May, Sponsor, and Frank Russum.

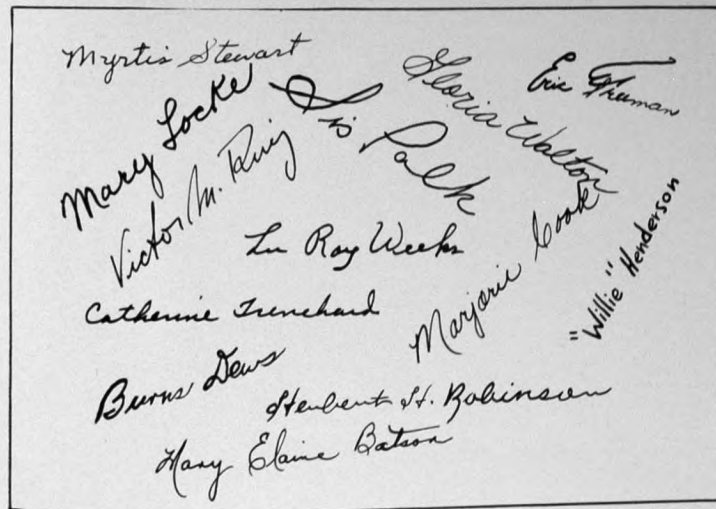


The PERKOLATOR

To present Perk as it is—this is our idea. Life long friendships that started in the dormitories—the *one* boy or girl who was met in such familiar places as the Post Office, the Grill, the Library—those are the things we want to make re-live when the pages of this book are turned years hence.



THE STAFF



Myrtis Stewart
Mary Locke
Victor M. Ring
Catherine Trunchard
Burns Dews
Herbert St. Robinson
Mary Elaine Batson
Gloria Walton
L. Ray Weeks
Marjorie Locke
"Willie" Henderson
Eric Thuman



JONES HAMILTON STEWART WALTON DEWS
HUAL PIPER SUTTON BAUGHN

SOCIAL *Recreation* COMMITTEE

Purpose: To provide afternoon and week-end social and recreational activities for the students.

Accomplishments: Conducted informal dances two afternoons a week; gave one informal dance a month; scheduled and supervised all entertainments held during the week-end; provided and conducted night socials during the week; and acted as hostesses in Harrison Hall for all social events.

MEMBERS

Sophomores: Bill Jones, Myrtis Stewart, Gloria Walton, James Baughn, and Tom Backstrom (First Semester).

Freshmen: Billy Hual, Tish Piper, Mary Anne Sutton, Burns Dews, and Fred Rainey (First Semester).

High School: Mary Hamilton, Bill Raborn (First Semester), and Bill Henderson.

PHI THETA KAPPA

The Phi Theta Kappa is an honorary fraternity for junior colleges. The members must be in the upper ten per cent of the student body and must maintain a scholastic average of "B." The aim of this organization is to promote scholarship, leadership, and fellowship. The local chapter, Gamma Nu, is a member of the National Society of Phi Theta Kappa.

Although the number of members in our chapter this session never exceeded twenty,

we had a large turnover, since several of the boys withdrew from school to enter the armed services. William Stinson, William Walker (treasurer), Earl Cassanova, Ronald Keel (president), and James McMurtray were in this group. All the other boys are members of some reserve program.

The officers are; James Hudgens, President; Glenn Torres, Vice-President; Maurine Easterling, Secretary; Aleen Jones, Treasurer; Mary Havard, Reporter; Gloria Walton, Historian.

First Row—Maurine Easterling, Aleen Jones, Nina Saunders, Lucile Roberts, Irene Hanson.
Second Row—Catherine Trenchard, Mary Havard, Sybil Walker, Colleen Hamilton, Shirley Seymour, Gloria Walton, Georgia Ann Williams.
Third Row—Preston Cullen, George Saab, Glenn Torres, William Lassiter, Kenneth Tarzetti, James Hudgens, Burns Dews.





First Row—Irene Hanson, Marjorie Cook, Aleen Jones, Lucille Roberts, Nina Saunders.
Second Row—Sybil Walker, Gloria Walton, Maurine Easterling, Mary Havard.
Third Row—Bill Jones, George Spence, Frank Russum, Harold Wesson.

CHRISTIAN COUNCIL

This organization is composed of representatives from the Episcopal, Catholic, Baptist, Methodist, Presbyterian, Y.W.C.A., and Y.M.C.A.—the religious groups on the campus. Its purpose is to coordinate the activities of all denominational groups. It sponsors interdenominational Sunday evening vesper programs once each month, plans the religious emphasis programs, and endeavors to arouse the interest of students in attending more regularly their religious services.

First Row—Dorothy Travis, Gene Hepler, Marjorie Cook, June Sneden, Minnie Ruth Eubanks, Victor Ruiz.
Second Row—Mrs. Stanley Beers, Miss Ruth Blanchard, Elizabeth Jones, Miss Terry Collette, Miss Edna Haney, chairman.
Third Row—Mr. C. O. Hinton, E. T. Whittington, James Hudgens, Lee Roy James, Frederick Ritter, Miguel Ydigoras.

International RELATIONS CLUB

The International Relations Club is one of the national organizations whose purpose is to help its members have a clear understanding of current events and international problems. Membership is open to students who have an average of 85 or above in social studies.

The officers for this year are: Nina Saunders, President; Sybil Walker, Vice-Pres.; Marjorie Cook, Secretary-Treas.; and Bill Jones, Reporter. Mr. R. F. Rivers is sponsor.





Y. W. C. A.

OFFICERS

President.....	LaNORA BYRD
Vice-President.....	DOROTHY O'NEAL
Secretary.....	GLORIA WALTON
Treasurer.....	MARJORIE COOK

CABINET

Sophomore Program Chairmen.....	DOROTHY COOK
Freshman Program Chairmen.....	MYRTIS STEWART
High School Program Chairmen.....	MINNIE RUTH EUBANKS
Pianist.....	FRANCES LONG
Chorister.....	ELIZABETH ANN BATSON
Historian.....	FRANCES ALDERMAN
Reporter.....	MARTHA JO GILLIS
Typists.....	WILMA PROFFITT
Christian Council Representatives.....	ELISE BAYLESS
Sponsor.....	NINA SAUNDERS
	BETTY JACKSON
	MAURINE EASTERLING
	DOROTHEA TRAVIS
	RUTH GILLIS
	MISS EDNA HANEY

Y. M. C. A.

In a time when education has become extremely scientific in its approach, it is highly important that religion be articulated in its function of giving value and meaning to life. Science is painstakingly testing the facts of life. It remains for religion to evaluate these facts. Religion at its highest not only gives flashes of insight into the real values of life, but also gives the energy to conserve these values at any cost. The primary function then of the Young Men's Christian Association is to discover through study and insight the values inherent in religion and to make them effective in all their human relationships. In this task they seek to understand Jesus and follow Him.

The officers for the second semester are: Harold Wesson, President; Martine Neilson, Secretary; Glen Torres, Treasurer.

First Row—Bill Jones, Harold Wesson, James Hudgens, August Riveria, George Fell, Martine Neilson.

Second Row—Preston Cullen, John Rollins, Leroy James, Sheldon Hartel, Frank Russum, Edgar Page, Alfred Howell.

Third Row—Mr. Gregory, Sponsor, Talmage Saucier, Ross Gatlin, Lee Morris, Hermes Hague, John Roberson.





First Row—Wilma Blackwell, Elizabeth Ann Weeks, Annette Hatten, Louise Ward, Ila Frances Johnson, Maurine Easterling, LaNora Byrd.
Second Row—Gloria Walton, Mary Havard, Eva Overton, Sybil Walker, Carolyn Hoyt, Mary Elizabeth Reams, Martine Neilson.
Third Row—Gerry Roberts, Virginia Howell, Willie Pearl Bennett, Rose Marie Powell, Dorothy O'Neal, Helen Taquino.
Fourth Row—Bill Jones, Catherine Trenchard, Hermes Hague, Elizabeth Jones, Jimmy Krestensen, James Hodgins, Glen Torris, John Roberson, Miss Ruth Blanchard, Sponsor.

W E S L E Y

One of the most outstanding religious organizations on the campus is the Wesley Foundation, composed of the Methodist students. It began under the direction of Rev. Ridgeway, pastor of the Wiggins Methodist Church in 1937. This organization has a great influence on the spiritual life of the students. Its main objective is to maintain Christian fellowship.

The officers are: Dorothy O'Neal, President; Rose Marie Powell, Vice-President; Mary Havard, Secretary-Treasurer; LaNora Byrd and Elizabeth Ann Weeks, Program Chairmen; Miss Ruth Blanchard, Sponsor.

B. S. U.

Realizing that the greatest argument for Christianity is a Christian, the members of the B. S. U. have aimed to set the Christian example. This organization keeps the student more closely attached to his church.

The members center around the council, which is composed of James Brent, President; Fred Ritter, Membership Vice-Pres.; Mary Ealine Batson, Social Vice-Pres.; Bernice Saucier, Devotional Vice-Pres.; Harold Wesson, Recording Secretary; Freda Long, Treasurer; E. T. Whittington, Representative to Christian Council; Elise Bayless, Pianist. Mr. W. G. Gregory is the faculty advisor, and Rev. Gaston Mooney is pastor advisor.

First Row—Elise Bayless, Ross Catlin, Freda Long, Frances Long, Billie Ruth Holleman, E. T. Whittington, Minnie Ruth Eubanks.
Second Row—Winnifred Roberts, Bernice Saucier, Colleen Hamilton, Ruth Ladner, Dorothy Cook, Mary Elaine Batson, Harold Wesson.
Third Row—Aleen Jones, Ethel Winnie Rouse, Lucile Roberts, Dorothy Clemons, Carmen Eldridge, Eloise Bryant.
Fourth Row—Mr. Gregory, Sponsor, Jimmy Brent, Dick Taft, Fred Ritter.





First Row—Miss Terry Collette, sponsor; Irene Hanson; Verby Lizana; Erlyne Santa Cruz; Shirley Seymour; Argentina Alcerro; Rosemary Gutierrez.
Second Row—John St. Anant; Augusto Rivera; John Jackson; Victor Ruiz; Miguel Ydigoras.
Third Row—George Saab; Luke Benigno; Elroy Scott; Joe Creel.
Not Pictured—Janis Pitcher, Wanda Davis, Peggy Headly, Blanche Spavin, Rosa Chillet, Audrey Mendez, Rodrigo Fernandez.
 The officers are: George Saab, President; Victor Ruiz, Vice-President; Janis Pitcher, Secretary-Treasurer.

THE NEWMAN CLUB

The Newman Club, an active unit of Perkinson Junior College, is composed of the Catholic students of the campus. Its main objectives are primarily to urge Catholic students to attend mass on Sunday, to attend the regular monthly meetings, and to learn something of the religious teachings of the Catholic Church.

PRESBYTERIAN CLUB

As one of the outstanding religious organizations on the campus, the Presbyterian Club has as its aim and purpose the fostering of christian fellowship among the students.

Seated—Marjorie Cook, President, Mary Devore, June Sneden, Vice-President, Edwin Simpson.
Standing—George Fell, Secretary, Charles Falkenberry, Barbara Creelius, Beatrice Clark, Betty Jackson, Treasurer, Leroy James, Preston Cullen.
Not Pictured—C. O. Hinton, Sponsor, Alice Evans, Reporter, and Barbara Anderson.





First Row—Bill Jones, Fred Ritter, James Haynes, Burns Dews, Ned Driggers, Edwin Simpson.
Second Row—John Jackson, Harold Wesson, Hayes Allen, E. T. Whittington, John Rollins, James Baughn.
Third Row—Elroy Scott, Buster Whittington, Kenneth Tarzetti, James Still, Lee Roy Weeks, Charles Falkenberry.
Not Pictured—Earl Rouse, Frank Russum, Shirley Batson, Pat Donahoe, Leroy Yeager, L. A. Krohn, Charles Cain.

P C L U B

The "P" Club, an organization composed of boys who have won a letter in some major sport, has as its aim the sponsoring of good fellowship and school spirit in the community as well as on the campus.

These boys are representative of not only the athletic side of our school but also take their places in the religious and social life as well.

The officers are: James Baughn, President; James Haynes, Vice-President; Lee Roy Weeks, Secretary-Treasurer.

Future TEACHERS of America

Our chapter of the Future Teachers of America, organized in 1941, has completed its second successful year. Under the guidance of B. P. Russum, for whom the chapter was named, the club has sponsored the sale of War Stamps and Bonds, and some of its members have assisted Miss Elton Dalier in carrying out a program of physical education in Perkinson Junior High School.

The officers are: Geraldine Roberts, president; Sybil Walker, vice-president; Fay Strother, secretary and treasurer; LaNora Byrd, librarian; Catherine Ramsey, reporter.

First Row—Sybil Walker, Bettie Jackson, Geraldine Roberts, La Nora Byrd.
Second Row—B. P. Russum, sponsor; Catherine Ramsey, Fay Strother, Dorothy O'Neal, Ruth Ladner.
Third Row—Bernice Saucier, Bill Jones, Ann Holden.





THE DRAMATIC CLUB

Entertainment is the motto of the Dramatic Club. This organization exists for the benefit of its members and the student body by presenting plays throughout the entire year.

During the first semester the club presented the hilarious comedy, "The Whole Town's Talking," ably directed by Miss Harriet Fulton. During the second semester, the Dramatic Club, sponsored by Miss Gertrude Sandrock, gave chapel programs for the enjoyment of all, and assisted the Play Production classes.

The officers are: Wilma Proffitt, President; Elise Bayless, Vice-President; Gloria Walton, Secretary; James Hudgens, Treasurer; Dorothy Cook, Reporter.

GLEE CLUB

The first semester the Glee Club presented The "Messiah" under Miss Harriet Fulton's direction and the second semester a very effective Easter program with Miss Gertrude Sandrock as director.

Sopranos—Annette Hatten, Jean Alexander, Betty Jackson, Sibyl Walker, Ethel Winnie Rouse, Gloria Walton, Dorothy O'Neal, Billie Ruth Holleman, Alga Ladner, Margaret Sherman, Marilyn Russum, Rose Marie Powell, Carmen Eldridge, Willie Pearl Bennett, Elizabeth Jones, Barbara Anderson, Blanche Spavin, Mary Havard.

Second Sopranos—Geraldine Roberts, Mary Elaine Batson, Dorothea Travis, Carolyn Hoyt, Virginia Howell, Janis Pitcher.

Altos—Minnie Ruth Euhanks, Lucile Roberts, Wilma Blackwell, Tish Piper, Dorothy Cook, Ruth Ladner, Gene Hepler.

Tenor—Bill Jones, Herbert Robinson, James Brent, Alfred Howell, S. C. Beers, Dick Lightsey.

Bass—Bill May, John Roberson, Hermes Hague, James Hudgens, Dick Taft.

Pianist—Elise Bayless.

President—Dorothy O'Neal.

Director—Miss Gertrude Sandrock.

Librarian—Alga Ladner.

Seated—Marilyn Russum, Alga Ladner, Elise Bayless, Wilma Proffitt, Freda Long, Gloria Walton, Tish Piper.

Standing—James Hudgens, Dorothy Cook, Harold Wesson, Frances Long.

Not Pictured—Frank Russum, Lee Roy Weeks, Marjorie Daniels, Joe Anderson, Billy Hual, Glen Stribbling, John Jackson, Gerry Roberts.





First Row—Dick Taft, Saxophone and Clarinet; George Sabh, Saxophone and Clarinet; Jimmy Still, Saxophone and Clarinet.
Second Row—William Lassiter, Trumpet; Luke Benigo, Trumpet; Mr. Stanley Beers, Director and Trombone; Glen Stribling, Trombone.
Third Row—Dick Lightsey, Drums; Elise Bayless, Pianist.

ORCHESTRA

The "Swing Barons", under the direction of S. C. Beers, has been one of the most active organizations on the "Perk" campus. With each member featured as a soloist, the orchestra provides the music for the tea dances, formal dances, formal dinners, and banquets.

BAND

The "Perk" Band, directed by Mr. Stanley Beers, is one of the leading organizations on the campus. In the past it has won several distinctions, among which was the state trophy in 1940. During the past two years, the band has served "Perk" faithfully and played for all the football games.

First Row—John St. Amant, Clyde Stanley, John Kite, Dick Lightsey, Bill Rahorn, Murphy Maddox, Mary Elaine Batson.
Second Row—Billy Ruth, Holleman, Frank Russum, Irene Hanson, Wanda Davis, Luke Benigno, William Lassiter, Wilma Proffitt.
Third Row—Myrtis Stewart, Glenn Torres, James Brent, James Krestensen, Marilyn Russum, Prof. S. C. Beers, Director.
Fourth Row—Gloria Walton, Dick Taft, Elise Bayless, Glenn Stribling, George Saab.





*First Row—Winnifred Andress, Argentina Alcerro, Vice-President, Carmen Eldridge, Lucile Roberts, Miss Terry Collette, Sponsor.
Second Row—Alvaro Ferenandez, Miguel Ydigoras, Victor Ruiz, President; Frank Russum, Secretary; Augusto Rivera.
Third Row—W. N. Garner, Enrique Ucles.*

SPANISH CLUB

The Spanish Club, which is composed primarily of the language students and the students from Latin America, has for its aim the fostering of the Good Neighbor Policy. Through the study of Latin American literature, customs, and civilization, we strive to promote from year to year a better understanding between the Americas. It is hoped that our efforts will help to strengthen these bonds.

FRENCH CLUB

The French Club is an organization composed of French students or of students who are interested in French. Its purpose is to study about and to sponsor good feeling toward France.

“Nous autres etudiants Francais nous rappellons a votre bon souvenir. Mes Amites.”

The officers are: Kenneth Tarzetti, President; Gloria Walton, Vice-President; Claude Lloyd, Secretary; Richard Peterman, Treasurer.



First Row—George Ann Williams, Miss Terry Collette, Sponsor, Irene Hanson.

Second Row—Gloria Walton, Tish Piper, Verby Lizana.

Third Row—George Pitalo, John Roberson, Alec Kuljis.

Fourth Row—E. T. Whittington, Kenneth Tarzetti, James Hudgens.



CAMERA SNAPS

After the ball!!—What's cookin', Doc?—Wait a minute hub—you go on another page!!—"That's chicken!"—What, no mess?—"Dear Boots"—Bird's eye view of Perk—Ah, ye olde belt line—Pete's house—Vas you dere, Charlie?—Conque estudiandito?—Get along little "Doggy"—Pretty, huh?—Yes, it's turtle eggs!!

CAMERA CLUB

This year the Camera Club completed its third successful year. Its aim is to teach the members how to take, develop, and print pictures in the school's own darkroom.

The officers are: Victor Ruiz, President; Joe Creel, Vice-President; Marjorie Cook, Secretary; Irene Hanson, Treasurer; Dorothy Clemons, Reporter; Mr. J. N. Garner, Sponsor.

First Row—Victor Ruiz, Dorothy O'Neal, Irene Hanson, Marilyn Russum, Mabel McLeod, Dorothy Clemons, George Ann Williams.
Second Row—Alfred Howell, Ann Holden, Bill Jones, George Strother, Marjorie Cook, James Krestensen.
Not Pictured—Martine Neilson, Bobby Sanders, George Fell, Eric Freeman, Joe Creel.





First Row—Mr. W. W. Euhanks, sponsor; Doyle Smith; Voss McRaney; James McMurtray; Victor Ruiz; Donald Campbell.
Second Row—George Spence, sec.-treas.; George Foster, James Brown, president; Bill Saucier, Wentz Batson, Bill Watson, vice-president.
Not Pictured—Tom Havard, Hermes Hague, Hervey Hinson, Howard Parker, Lamont Rouse, R. L. Rouse, C. A. Astleford, Bill Henderson, Bill Hightower, Victor Langley, Dick Lightsey, Edgar Page, David Perkins, Anthony Sekul, George Strother, H. Skeggs.

AGRICULTURE CLUB

PURPOSES

1. To develop leadership among the students of agriculture.
2. To assist with the college farm in an effort to "do while learning."
3. To sponsor an F.F.A. and 4-H day on the campus annually.
4. To promote better livestock and farming methods in service area of the college.
5. To sponsor at least one agricultural entertainment per year.
6. To propagate nursery stock for campus beautification.
7. To encourage better scholarship among members and in the college.

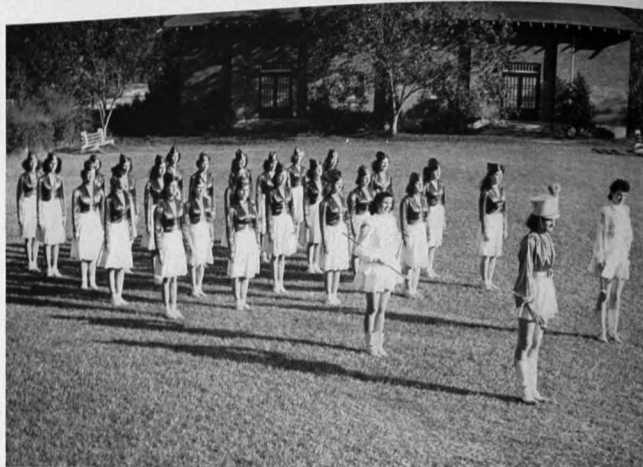
SOCIAL ARTS CLUB

The Social Arts Club strives to achieve perfection in all social and domestic affairs. It is composed of girls who are in the Home Economics Class, in addition to those who are interested in problems of Home Economics.

The officers are: Myrtis Stewart, President; Ida Frances Johnson, Vice-President; Mary Havard, Secretary-Treasurer; Margaret Ann Polk, Reporter; Miss Ruth Blanchard, Sponsor.

First Row—Annette Hatten, Wanda Davis, Ida Frances Johnson, Ethel Winnie Rouse.
Second Row—Minnie Ruth Euhanks, Jean Alexander, Sybil Walker, Virginia Howell.
Third Row—Mary Havard, Ruth Ladner, Fay Strother, Miss Ruth Blanchard, sponsor, Bernice Saucier, Myrtis Stewart.
Not Pictured—Elizabeth Ann Batson, Elizabeth Ann Weeks, and Aleen Jones.





PEP SQUAD

The purpose of the Pep Squad is to provide entertainment at all ball games and form the nucleus for the cheering section. Occasionally the squad makes the trips with the football team. Members that attend three fourths of the practices are given emblems.

Officers—Tish Piper, President; Minnie Ruth Eubanks, Secretary.

Leaders—Freda Long, Head Leader; Doris Ward, Majorette; Erylne Santa Cruz, Majorette.

Director—Miss Elton Dalier.

Members—Janis Pitcher, Marjorie Cook, Dorothea Travis, Shirley Seymore, Elna Gene Taylor, George Ann Williams, Virginia Cox, Beatrice Clark, Catherine Davis, Rosemary Gutierrez, Aleen Jones, June Sneden, Mabel McLeod, Willie Pearl Bennett, Carolyn Hoyt, Bernice Breland, Margaret Ann Polk, Dorothy Cook, Mary Devore, Eva Overton, Alice Evans, Marjorie Daniels, Hope Abbott, Dorothy McNease, Irlene Sapp, Sibyl Walker, Wilma Blackwell.

COMMERCIAL CLUB

The Commercial Club is an organization for the benefit and enjoyment of students interested in any phase of the business world. Its members endeavor to improve their knowledge of the skills relating to commercial work in all its branches. A few of these subjects are: the requirements of efficient secretaries, accountants, and typists; insurance; investments; and stocks and bonds.

It is truly a medium by which the finishing touch may be placed upon the ambitious student, in supplement to the already well-rounded commercial course offered in this school by Mrs. Gregory and Mr. Van Tone. Membership is open, however, to any high school or college student who has taken, or who is at present studying any form of business work.

First Row—Frances Long, Juanita Henderson, Betty Jackson, Billy Ruth Holleman, Maurine Easterling.

Second Row—Freda Long, Colleen Hamilton, LaNora Byrd, Elna Gene Taylor, Mrs. Gregory, Sponsor.

Third Row—Gene Hepler, Minnie Ruth Eubanks, Lucile Roberts, Argentine Alcerro, Mary Elizabeth Reams, Bernice Breland.

Fourth Row—Shirley Seymour, Catherine Ramsay, Elise Bayless, Lois Breland, Catherine Trenchard.

Fifth Row—Dorothea Travis, Mabel McLeod, Marjorie Daniels, Verby Lizana.

Not Pictured—Winnie Stinson, Opal Clayton, Dorothy Cook, Dorothy Clemons.



The COMMERCIAL CLUB



Typing
CLASS

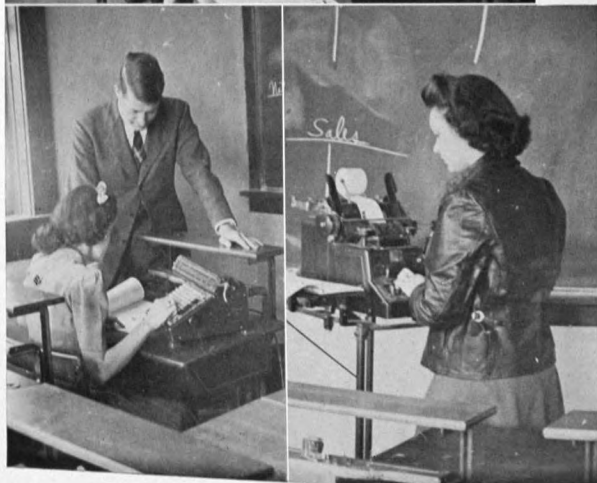
President.....MAURINE EASTERLING

Vice-President.....JUANITA HENDERSON

Secretary.....LanORA BYRD

Treasurer.....COLLEEN HAMILTON

Reporter.....BETTIE JACKSON



CALCULATING MACHINE AND ADDING MACHINE



DICTAPHONE AND POSTING MACHINE



DEAR DIARY:

Some of us have heard Perk's bells ring the last time; others will return next year to continue the trials and tribulations, as well as the joys and pleasures, of college life. While we sit in our bare rooms—trunks packed—we think of the occasions which will ever linger in our memories of Perk. Here they are:

September 7—Old Friends greet and new friends meet—Get Acquainted Dance was held.

September 9—Student—Faculty Reception.

September 10—All classes begin—vacation is *really* over.

September 17—Football team elects James Baughn, Captain, and James Haynes, Co-Captain.

September 21—Physical Exams—Good looking Army Doctors!

September 28—Mary Elaine, Wesson is back!

October 29—Decator burned in effigy! Pep rally.

October 30—Homecoming!

October 31—Holiday! So long for awhile.

November 4—Lieutenant Le Beau from W. A. A. C.'s was here.

November 6—Perk—State Champs!

November 9—Ted Shawn and Corp. Barton Mumaw.

November 21—First Formal Dance—Music by "Swing Barons."

November 24—Dramatic Club Play—"The Whole Town's Talking."

November 25-29—Thanksgiving Holidays—There's no place like home.

December 5—Ship Wreck Dance—What wrecks!

December 12—Christmas Party—Santa Claus, Christmas Tree and all.

December 14—Who's Who Contest.

December 15—Christmas banquet in honor of Football team.

December 17—"The Messiah." It was beautiful. Christmas Formal—Classy affair.

December 19-January 3—Christmas Holidays.

January 18-23—Exams!! 'Nuff said.

January 25-28—Baptist Revival, Dr. Horton, Speaker.

February 4—"Hi, Bill, glad to see you back." "P" Club Banquet—More fun!!

February 20—Rainbow Ball—Best yet!

March 11-12—Student Days—Great success, sure as *shootin'*.

March 13—Holidays—We love 'em!

March 16—Religious Emphasis Day—Dean Guess and Dr. Chappell, Speakers.

March 21—Newman Club Circus—Better than Barnum and Bailey!

March 30—Music Recital.

April 1—April Fool's Day!

April 3—Sophomore Class Variety Show—a Faculty Burlesque.

April 20—Easter Program by Glee Club.

April 22—Easter Sunrise Service—Beautiful.

April 22-26—Spring Holidays.

April 27—Senior Play—"Home Was Never Like This."

May 8—Freshman-Sophomore Picnic.

May 14—Junior-Senior Picnic—Some fun, eh what?

May 18—Sophomore Play—"Don't Take My Penny."

May 22—Farewell Dance—Oh, me!

May 23—Commencement Sermon.

May 26—Graduation Exercises—"Parting is such sweet sorrow.

And so until next year,—Adios

Our
ADVERTISERS

Compliments

of

Dees General Store

PERKINSTON

MISSISSIPPI

LEFEVE'S SERVICE CENTER

Fishing Tackle

Sporting Goods

Home & Automotive Supplies

1428 25th Ave.

Gulfport, Mississippi

Come to

THE COLLEGE GRILL

EAT, DRINK, AND ENJOY YOURSELF

COLD DRINKS, ICE CREAM, SANDWICHES, FUN

Mrs. Evans: "I think we'd better call Dr. Jones. Tiny had a severe pain in the head."

George: "Oh, pshaw! He's had that so often before."

Mrs. Evans: "Yes, but never on a day when school is out."

Compliments

of

Legion Theater

27th Avenue

GULFPORT

MISS.

Phone 200

P. O. Box 58

CRYSTAL ICE COMPANY

Ice • Cold Storage

GULFPORT

MISSISSIPPI

Jimmy: "How did you enjoy your horse-back ride?"

Bill: "I never thought anything filled with hay could be so hard!"

Marjorie: "Has the joke editor got my joke yet?"

Gloria: "No, but he's trying hard."

Compliments of

J. C. CLOWER FURNITURE CO.

GULFPORT

MISS.

Dorothy O. had just received a new doll from her aunt. "And what are you going to name her?" Miss Sandrock asked.

"Sirche," said Dot.

"Sirshe? I've never heard that name before."

Dot looked aghast. "Don't you remember that song you taught me—'Where are you going to, my pretty maid! I'm going a milking, Sirche said'?"—Montreal Star.

Compliments

of

Dodge Printing Company

GULFPORT

MISSISSIPPI

R

Cy-Rape Drug Company

Drugs - Cold Drinks - School Supplies

Prescription Specialists

Phone 754

Compliments of

M. SALLOUM
DEPARTMENT STORE

14th Street

GULFPORT

MISSISSIPPI

COMPLIMENTS OF

**HANCOCK
BANK**

GULFPORT

MISSISSIPPI

Bobby: "Why do bees buzz?"

Billy: "I don't know. Why do bees buzz?"

Bobby: "You'd buzz too if somebody stole your honey and nectar."

Bradley: "You seem to have grown shorter than I remember you."

Mr. Beers: "Yes, I got married and settled down."

Mr. May: "So your new garden is a jewel."

Mr. Beers: "Yes—just eighteen carrots in it."

HILL'S FURNITURE STORE

"ASK YOUR NEIGHBOR"

Moos Point, Miss.

Phone 2061

Southern Specialty Sales Co., Inc.

821 St. Charles Street

New Orleans, La.

POWER LAWN MOWERS
PLAYGROUND EQUIPMENT

BURNHAM'S DRUG STORE

We Carry Everything Usually Stocked by a
First Class Pharmacy

"Air Conditioned for Your Comfort"

MOSS POINT, MISS.

Compliments
of

C. N.
Cruthurds

Justice of
The Peace

GULFPORT,
MISSISSIPPI

Jimmy Brent: "Do you know the difference between taxis and the bus?"

Carolyn: "No."

Jimmy: "Good. Then we'll take the bus."

Compliments

of

J. A. (Tony)

Creel

Biloxi

Miss.

When They're Hungry For Food and Fun

REID'S CAFE

Is The Place The Students Run

PERKINSTON

MISSISSIPPI

BRUMFIELD'S

MOSS POINT, PASCAGOULA, BILOXI

Scott: "Why didn't you answer my letter?"

Mary Ann: "I didn't get it, and besides, I didn't like some of the things you said in it."

Coach Van Tone: "I won't begin class until this room settles down."

Jimmy: "You'd better go home and sleep it off, Prof."

HILL'S HARDWARE

The 10,001 Article Store

Phone 3621

MOSS POINT, MISSISSIPPI

E. V. Suthoff

W. H. Suthoff

COMPLIMENTS OF
THE

MISSISSIPPI EXPORT RAILROAD COMPANY THE DIESELIZED ROAD

PASCAGOULA, MISSISSIPPI

MOSS POINT, MISSISSIPPI

Serving the Gulf Coast from the North

WOOD'S

The Store With the Goods

MOSS POINT, MISSISSIPPI

Miss Locke had lost a five-dollar bill. Sadly she entered the advertisement office of the local newspaper and handed in the notice she wanted inserted in the "Lost and Found" column. The adtaker almost guffawed when he read, "Lost, a \$5 bill, Sentimental value."

**MOSS POINT
INSURANCE AGENCY**

IF IT IS POSSIBLE. WE CAN INSURE IT.

**MOSS POINT, MISSISSIPPI
PHONE 2691**

Myrtis: "I made this pudding all by myself."

L. A.: "Swell—but who helped you lift it out of the oven?"

Mr. Russum: "Do you know what happened to Pompeii?"

Marilyn: "Yep—he died of an eruption."

**O'BRIENS THERMOLYZED
PAINTS are Pre-Shrunk!**

There is no shortage
of GOOD PAINT . . .
No priority needed . . .

Available thru

Tomlinson Brokerage

Gulfport, Miss.

Phone 135

O'BRIEN VARNISH CO.

SOUTH BEND, INDIANA
Originators of Thermolyzed Tung Oil Paints

Compliments

of

The Merchants Co.

GULFPORT

MISSISSIPPI

JONES BROS. DRUG CO.

The REXALL Store

Phones 130-131

GULFPORT

MISSISSIPPI

Compliments

of

GULFPORT

BUTANE GAS

&

APPLIANCE COMPANY

2832 13th St.

GULFPORT

MISSISSIPPI

Some students think the only thing they should use their heads for is to keep their ears apart.

Balter: "What would you call a man who hid behind a woman's skirt?"

Hermes: "Pretty small."

Compliments

of

Hamilton Brothers Co.

GULFPORT

MISS.

COMPLIMENTS OF

THE

**H. & H.
HOTEL and CAFE**

GULFPORT

MISSISSIPPI

COMPLIMENTS

OF

C. J. DARBY

CHANCERY CLERK

GULFPORT

MISSISSIPPI

COMPLIMENTS OF

DAY'S DRUG CO.

GULFPORT

MISSISSIPPI

**ANDERSON'S
MEN'S WEAR**

14th Street

GULFPORT

MISSISSIPPI

June takes things too literally; like the fellow who saw a card on the door as he was leaving the hotel, stating, "Stop. Have you left anything?" and went back and took the soap and towels.

GULF PAINT & GLASS CO.

Pec-Gee Paints
25th AVENUE

GULFPORT

MISS.

STONE'S ICE CREAM CO.

GULFPORT,
MISSISSIPPI

GULFPORT LAUNDRY and CLEANING CO.

Dry Cleaning and Dyers

GULFPORT

MISSISSIPPI

Buster and Mink were making plans.

Said the first: "I'll flip a coin. Heads we go to a movie, tails we go see the girls. IF it stands on edge, we study."

KIRKPATRICK COAL COMPANY

SALES AGENTS AND DISTRIBUTORS
OF QUALITY COALS

MEMPHIS

TENNESSEE

LaNora walked up to the bank clerk's window and said: "I would like to buy some traveler's checks."

Dollie asked: "What denomination, please?"

LaNora replied: "Methodist."

Compliments of

A Friend

R. M. HENDRICK

Manufacturer of Academic Caps and Gowns

147 Millsaps Ave.

Jackson, Miss.

Compliments
of

Superior Products Co.

3110 Monroe Street

New Orleans

La.

GRANT DRUGS

WALGREEN AGENCY

BILOXI

&

GULFPORT

MISSISSIPPI

Kowry's

GULFPORT,

MISSISSIPPI

The New Store for Men and Boys—
Where Style and Quality Prevail

14th STREET

TOOLEY-MYRON STUDIOS

"FOREMOST IN THE SOUTH"

308 W. HOWARD AVE.

BILOXI, Miss.

We consider it a real honor and privilege to
have been selected to do your portraitures.

Compliments of

A. J. RAMSAY

CIRCUIT CLERK

GULFPORT

MISSISSIPPI

Tom: "I'll have you know I am a descendant of the Boons."

D. T.: "Yes, and your grandmother's name was Bab."

COMPLIMENTS

OF

**WILSON'S PHARMACY
&
WIGGINS DRUG STORE**

WIGGINS

MISS.

SALE'S STUDIO

BETTER PHOTOGRAPHS

BY

H. D. SALE

GULFPORT

MISSISSIPPI

Herbert: "Are you the man who cut my hair last time?"

Barber: "I can't be. I've been here only a year."

Carolyn: "I never could see why they always call a boat 'she.'"

Cassanova: "Then I guess you never tried to steer one."

Compliments of

**Wiggins Implement
Co.**

WIGGINS

MISSISSIPPI

Compliments

of

HALL'S PRODUCE EXCHANGE

WIGGINS

MISS.

CASH & CARRY STORE

WIGGINS

MISS.

**JITNEY
JUNGLE**

WIGGINS MISSISSIPPI

Peoples Bank of Biloxi

Biloxi, Mississippi

Established 1896

**46 Years of Conservative,
Successful Banking**

HOTEL AVELEZ

European Plan • Every Room with Bath

BILOXI, MISSISSIPPI

Single \$1.50 to \$2.50

Double \$3.00 to \$4.50

Mary Ann: "Why do you call that boy 'Humpty Dumpty'?"

Erlyne: "He fell for me and I broke him."

Prof. Rivers: "What's capital and labor?"

Bill Jones: "Well, suppose I loaned you two dollars, that's capital. When I try to get it back, that's labor."

***The
Rendezvous
Cocktail Lounge***

Biloxi,

Miss.

Compliments of

Palace Theater

Show Place of Stone County

WIGGINS

MISS.

Compliments

of the

**Southwestern Gas and
Electric Company**

BILOXI

MISSISSIPPI

R. C. EDWINS

Sheriff

of

Harrison County

GULFPORT

MISSISSIPPI

Riemann Funeral Home

Phone 29-J

1718 25th Avenue

GULFPORT

MISSISSIPPI

Jimmy Haynes: "Father, I've a notion to settle down and start raising chickens."

Father: "Better try owls. Their hours would suit you better."

Compliments

of

**Mississippi Power
Company**

T. O. DALIER, Mgr.

GULFPORT

MISS.

Miss Haney: "Why the quotation marks all over this paper?"

Frank: "Courtesy to the man on my right."

DR. L. B. DARON

OPTOMETRIST

PHONE 2068

GULFPORT

MISSISSIPPI

BREAD IS *basic* FOOD



COLONIAL BAKING COMPANY

JACKSON

MISS.

Compliments of The

STANDARD DRUG CO.

MERIDIAN

MISS.

"Service Wholesalers since 1900"

COMPLIMENTS OF

H. T. COTTAM CO.

J. E. BAILEY

Representative

GULFPORT

MISSISSIPPI

Mr. May: "Is your wife opposed to capital punishment?"

Mr. Beers: "I should say so. She won't even let me have a clothes hanger."

Compliments

of

COAST COCA-COLA BOTTLING CO., INC.

P. O. Box 146

Gulfport, Mississippi

J. W. Milner, Manager

PATRONIZE OUR ADVERTISERS