



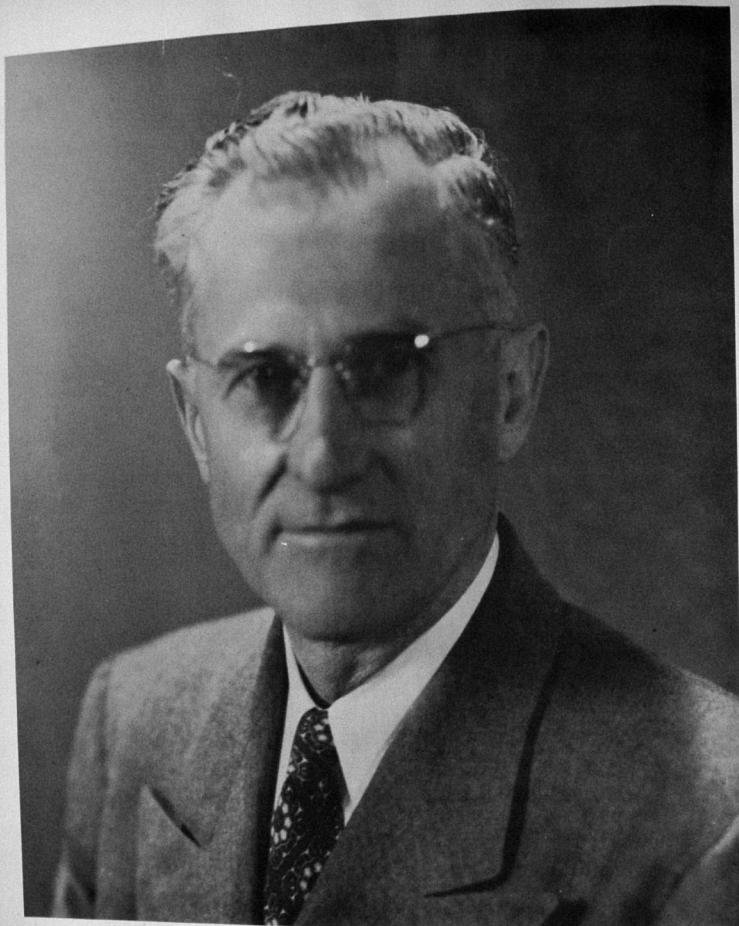
PERKOLATOR

1950

PERKINSTON COLLEGE 1950



PERKINSTON JUNIOR COLLEGE
Perkinston, Mississippi



President A. L. May

Dedication

TO ONE who has rendered the best of service in an unforgettable way, to one who has had the greatest amount of interest in all of our school activities, and to one who has furthered the advancement of higher education, We, The Perkulator Staff, dedicate the 1950 edition of The Perkulator.



Mrs. A. L. May

Dedication

For all the love she has shown us in her genial manner, in the beauty of her flowers, and in the daily walk of her Christian life, We, The Perkulator Staff, dedicate the 1950 edition of The Perkulator.

Annual Staff 1950 Perkolator

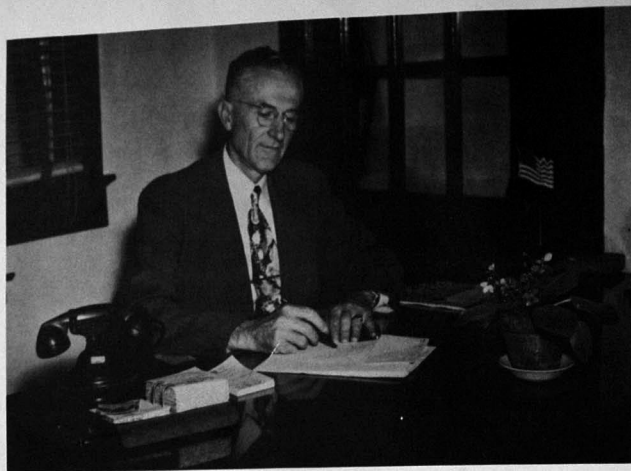
BOBBY BAILEY	Editor-in-chief
GEORGENA RYERSON	Assistant Editor
JACKIE BRYAN	Business Managers
BEATRICE ELLIS	
LOUISE FLYNT	Features
JO ANN McBAY	
ALLYN MILLER	Sophomore Representative
JOE PAVICH	Freshman Representative
PERRY BAGGS	High School Representative
PATSY CLIFTON	Sports Editors
DILLY PARDEN	
ROBERT HEARNE	Photography
ELWOOD WOLFE	
CHESTER FINLEY	Art Editors
ANNA BELLE JAMES	
JOE PAVICH	
MRS. WATSON	Sponsors
MR. GIPSON	
MR. WENIGER	

College Alma Mater

Way down South there's a school that we all know,
Where the winds from the Gulf doth ever blow
'Mong the pines so stately and so tall,
We listen to your call,
We love you best of all.

Fame was thine through the years of the past,
And we know thy name shall ever last,
Thou are noble, proud and true,
Oh, Perkinston, we all love you.





A. L. MAY

President of Perkinson Junior College
B. S., M. A.
"Mighty fine" . . . booster . . . Rotarian
Interested in everything . . . likeable



THOMAS J. GIPSON

Business Manager
Dependable . . . strictly business . . . clear thinker
friendly . . . quiet . . . swell fellow



LEONARD A. BLACKWELL—B. S.

Social Studies, Dean of Men
Obliging . . . Understanding . . . "I'll take you
with me" . . . jolly . . . "Square Deal".



ROY BRIGANCE

Baptist Student Director
Religious . . . honest . . . appreciates
the classical . . . good.



OSCAR EUGENE CLEMENT—B. M.

Voice
Systematic . . . Ambitious . . . Talented . . .
Easy-going . . . Fun.



REGINALD E. COOK—B. S.

Coordinator for Vocational and Technical Training.
Friendly . . . talkative . . . reasonable
. . . grins . . . nice.



SUSIE COOLEY—B. A.; M. A.

English, Modern Language
Quiet manner . . . stately . . . well-groomed . . .
reserved . . . courteous.

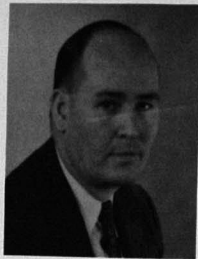
REV. DUKE

Teacher of The Bible
Conscientious . . . good . . . understanding . . .
Loves all people.



K. P. FAUST—B. S.

Chemistry
Calm, cool, collected . . . good memory
. . . reassuring smile . . . well-dressed
. . . likeable.



REV. FOY

Teacher of Bible
Conscientious . . . good worker . . . loves the
people . . . good.



JAMES V. GAMMAGE—B. S.; M. S.

Agriculture
Kind . . . Easy going . . . likeable . . .
plenty of fun.



E. L. GRAYSON

Radio Mechanics
Useful . . . full of fun . . . likes picture shows.



W. G. GREGORY—B. A.; M. A.

Mathematics
Honest . . . religious . . . conscientious . . .
reverent . . . understanding.



**MRS. W. G. GREGORY—B. A.; B. S.;
M. A.**

Commerce
Keen intellect . . . modest . . . observ-
ing . . . economical . . . calm . . . poised
. . . beloved.

WALTER FRANKLIN HALEY—B. A.

Business
Friendly . . . meticulous . . . cultured . . .
hearty laugh . . . a friend to all . . . neat . . .
singer.



FRANCES HARRELL—B. S.; M. A.

English
Keen intellect . . . fun . . . Abounding
energy . . . poised . . . a perfectionist
. . . courteous.



NOLLIE WADE HICKMAN—B. S.; M. A.

Social Studies
Varied interests . . . cheerful . . . smile . . .
gets to know his students . . . jokes . . . swell
guy.

MRS. EDNA JOHNSON

Dietician
Full of fun . . . loves excitement . . . appreciates
the good and useful.



**MISS JANANNA McINNIS—B. S.;
M. A.**

Home Economics
Stately . . . courteous . . . kind . . . un-
derstanding . . . loveable.



MRS. B. T. NASH

Office Assistant
Kind . . . good cook . . . modest . . . religious
. . . full of life . . . lots of fun.



**BINFORD TRUETT NASH—B. A. E.;
M. A.**

Mathematics, Social Studies
Accommodating . . . affable . . . com-
panionable . . . good sport.



HUMPHREY A. OLSEN —A. B.; A. M.

Librarian and Library Science
Well-read . . . open-hearted . . . good memory



ROBERT B. PERRY—B. A.

Physics, Chemistry, Mathematics
Keen intellect . . . quick . . . earnest . . . ap-
preciates the good-natured.



ANNIE-HOYT MONITA PRINE—B. M.

Piano
Lofty aspirations . . . interesting voice
. . . agreeable . . . attractive clothes
. . . pretty . . . fun.



MRS. PRICE

Manager of Grill
Loves flowers and people . . . kind . . . generous
. . . full of life.



EVELYN D. PRESCOTT—B. S.

Physical Education for Women
Good sport . . . cheerful . . . sweet . . .
obliging . . . firm . . . mild tempered
. . . jolly.



R. F. RIVERS—B. S.; M. A.

Social Studies
Registrar
Open-minded . . . companionable . . . witty . . .
friendly . . . talkative . . . interesting . . . con-
siderate . . . "Col. Bob".



MISS MILDRED RUSTIN

Secretary to President
Good . . . quiet . . . non-talkative . . . loves a
good laugh . . . enjoys good picture shows.



JOE C. SAIA—B. S.

Social Studies and Athletics
Friendly . . . likes the Commercial Appeal . . . loves football . . . witty . . .
good tempered.



JAMES ORION WARE, JR.—B. S.

Band Director, English
Musical . . . loves the picture shows . . . appreciates the artistic . . . good dancer . . . talkative.



**MRS. NATALIE BROWN WATSON—
B. A.; B. M.; M. A.**

English, Play Production, Sponsor of
Annual
Mercurial in disposition . . . witty . . .
friendly . . . "Sunshine" . . . talented
. . . loveable.



MRS. JULIA B. SLAY

Dean of Women
Understanding . . . religious . . . charitable . . .
willing worker.



W. D. SMITH

Wood Manufacturing
Talented . . . understanding . . . master-
ful . . . Mason . . . sincere.



NOLAN E. TOLLETT—B. S.

Head Coach, Science and Health
Good looking . . . appreciates the players . . .
considerate . . . good sport . . . likeable . . .
friendly.



MRS. GEORGE B. WESTERFIELD

Nurse
Patient . . . full of life . . . loves Tennessee . . .
considerate . . . friendly . . . understanding
. . . pills, pills; pills . . . we like her.



GEORGE B. WESTERFIELD—B. S.

Director of Athletics and Physical Education for Men
Good sport . . . fast driver . . . loves fun
. . . obliging . . . witty . . . likeable . . .
friendly.





RANDALL J. DEDEAUX—B. S.; M. F.

Agriculture Instructor
Accommodating . . . likeable . . . religious . . .
open minded . . . friendly. (Not pictured.)



WILMER C. ENTREKIN—B. S.

On-the-farm Trainer for Veterans
Good worker . . . unassuming . . . appreciates
the helpful . . . easy going. (Not pictured.)



"A magnifying glass helps"



Autograph

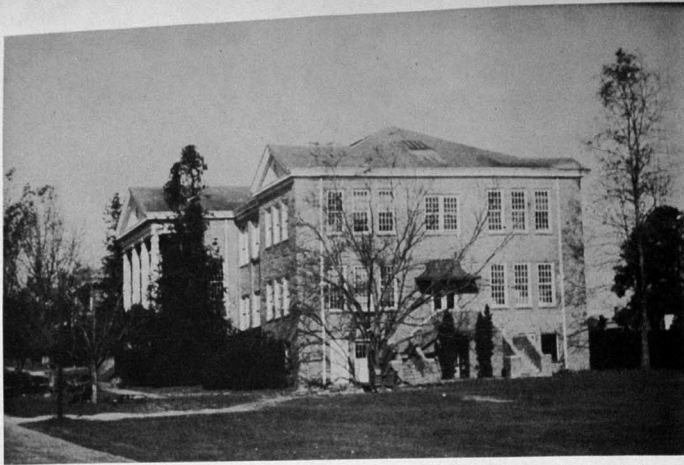




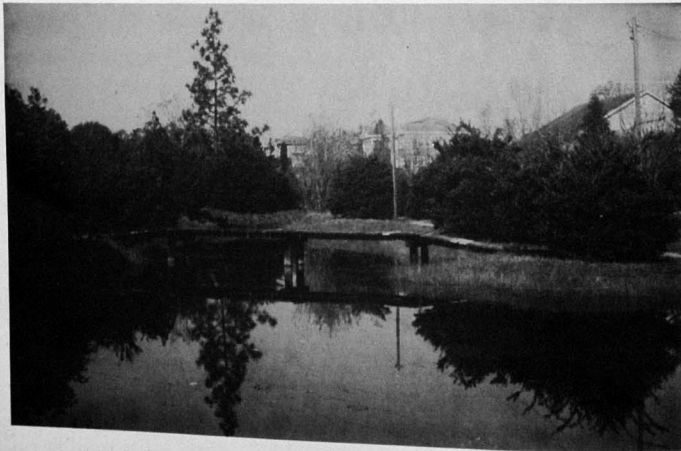
PERKINSON
STADIUM



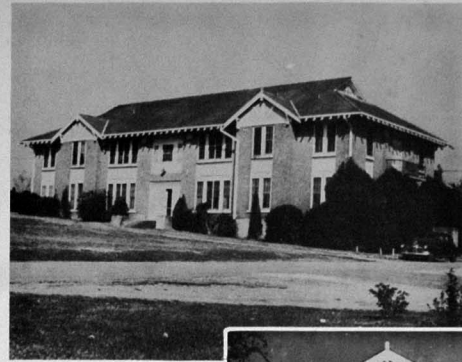
AERIAL
VIEW
OF
CAMPUS



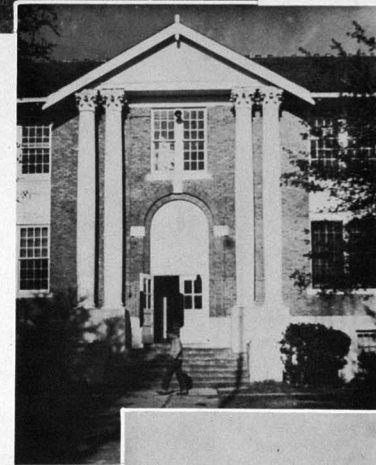
Administration Building



Campus Lake



Varsity Hall



*Science
Building*

Freshman Hall



Harrison Hall



President's Home



Teachers' Dormitory

Campus View

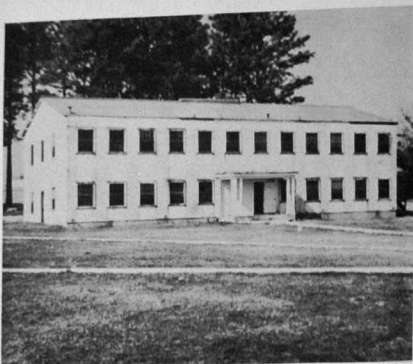


*Football Dormitory
and Grill*

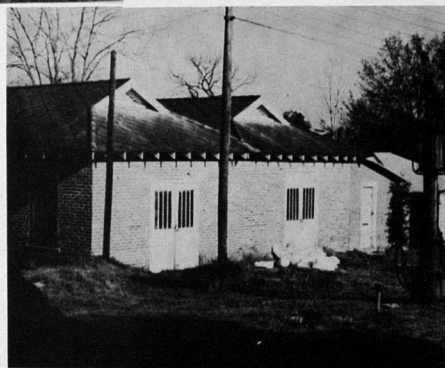


Gymnasium





*Infirmary and
Little Theatre*



*Radio Shop
and Laundry*



New Dormitory



College Barn



*Interior of
Radio Shop*



*Wood Shop
Interior*



Typing Class



Chemistry Lab



Galley Staff



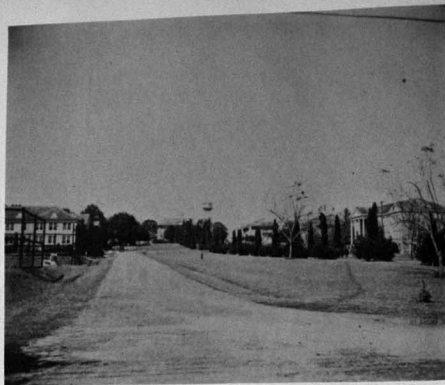
"Y" Hut



*Science Building
Annex*

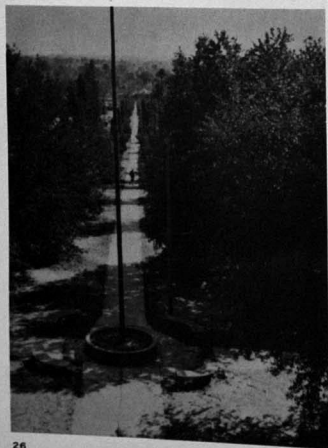


Wood and Auto Shops



Campus View

Friendship Walk



College Chapel



College Sophomores



Officers

Bob Dutton	President
Jack Starr	Vice-President
Maxine White	Secretary-Treasurer
George Winter	Reporter
Miss Frances Harrell	Sponsor

Sophomores

PAT ALLEN

Long Beach, Miss.
Football, Y.M.C.A., Vice-President of "P" Club, Phi Theta Kappa, Sophomore Representative of Student Council. Tall, dark and handsome . . . Veteran . . . Dependable . . . Personality of his own . . . Anna Bell.



PAUL ALVARADO

Guatemala, C. A.
Newman, Y.M.C.A. Far away places . . . Forever smiling . . . Helpful . . . Si . . . Say, check that hair.

ROBERT BAILEY

Gulfport, Miss.
Head Cheerleader, "P" Club, Y.M.C.A. (Secretary), Wesley, Commercial Club, Language Club, Dramatic Club, International Relations Club. Editor of Perkulator . . . The man with the cheers . . . "Dimples" . . . Nice . . . Bow ties . . . Friendly . . . Considerate . . . Polite . . . Bobby and Mary Alice.



BILLY ROSS BERRY

Perkinston, Miss.
Newman, "P" Club, Y.M.C.A. Good looking . . . sociable . . . easy going . . . agreeable . . . Haynes and Berry.

ARTHUR BOGDANN

Pascagoula, Miss.
Football, Future Teachers of America, Y.M.C.A., "P" Club. Unpredictable . . . "Let me tell you, Col. Bob" . . . Why hurry . . . sincere . . . How's Bettye . . . "Bubba".



HOLLIE T. BOND

Wiggins, Miss.
Check that coal black hair . . . happy-go-lucky . . . Day Student . . . Likeable . . . "Hollie".

DOUGLAS BOONE

Mobile, Alabama
Football, "P" Club, Amvets, Hunters Club, Tennis. Likeable . . . married . . . All around Athlete . . . "Teddy Bear".



RAEBELL BOONE

Biloxi, Miss.
Basketball, Y.W.C.A., Wesley, President of Woman's Intramural Board. Jolly . . . Good Manager . . . Look at that grin . . . "Rae".

College

A. C. BROADUS

Saucier, Miss.
Agriculture Club, Y.M.C.A. Polite . . . Quiet . . . Hard worker . . . "Stub".

MARY ELLEN BROWN

Biloxi, Miss.
Band, Baptist Student Union, Y.W.C.A., Basketball, Future Teachers of America, Oh! That talk . . . slow but sure . . . determined . . . friendly.



JACKIE BRYAN

Lucedale, Miss.
Commercial Club, Annual Staff, Band, Y.W.C.A., Glee Club, Ensemble. Mail clerk . . . friendly . . . moody . . . dependable . . . Oh! Tommy . . . "Jackie".

BILLY BURT

Hattiesburg, Miss.
Agriculture Club, Y.M.C.A. Likeable . . . Gadabout . . . "Billy the Kid" . . . slow but sure.



ALLEN BUSH

Gulfport, Miss.
Cheerleader, International Relations Club, President of Dramatic Club, Y.M.C.A., Baptist Student Union, Language Club. Cheers . . . friendly . . . crazy eh what? . . . helpful . . . likes red hair . . . dependable . . . "Dillie and Bush".

BETTY SUE CALDWELL

Lucedale, Miss.
Cheerleader, Future Teachers of America, Y.W.C.A., Scatterbrain . . . full of laughter . . . Oh! Boudwint . . . bounces with energy.



JOHN CALDWELL

Lucedale, Miss.
Student Council Representative. Speedy . . . Bubbling over with witty remarks . . . married . . . likeable . . . swell guy.

HELEN CHAPMAN

Yazoo City, Miss.
Choir, Commercial Club, International Relations Club, Future Teachers of America, Y.W.C.A., Wesley. "That's what you call short but sweet, boys!" . . . Lovely smile . . . smart as a whip . . . friendly.



Sophomores

SYLTON COLE

Pascagoula, Miss.
Football, "P" Club, Baseball, Future Teachers of America, Y.M.C.A. Jovial . . . Good ole' Sylton—got a lot of extra points . . . witty.

JOY CREE

Biloxi, Miss.
Band, Newman, Y.W.C.A. Shy . . . thoughtful . . . helpful . . . conscientious . . . working gal . . . "Joy".



SIDNEY CUEVAS

Gulfport, Miss.
Grill Manager, Newman Club (Reporter), Y.M.C.A., Agriculture Club. Enjoys life . . . nice to be around . . . Right Shirley? . . . hard worker . . . Oh! that laugh . . . "Sidney".

VERNON CUEVAS

Gulfport, Miss.
Y.M.C.A. Hard worker . . . dependable . . . dry wit . . . sincere.



BETTY JOE DAVIS

Wiggins, Miss.
Treasurer of Baptist Student Union, Treasurer of Y.W.C.A., Future Teachers of America, Vice-President of Women's Intramural Board, Basketball. Sports . . . sincere . . . frank . . . eyes that talk . . . cute kid.

BETTY JO DAVIS

Perkinston, Miss.
Choir Accompanist, President of Baptist Student Union, President of Home Economics Club. Helpful . . . cute . . . lovely hair . . . Oh! that smile . . . always thoughtful . . . "Jo".



HARRY DAVIS

Gulfport, Miss.
Y.M.C.A. Quiet . . . Carefree . . . unassuming . . . tall . . . obliging . . . slow . . . "Harry".

SHIRLEY DEAN

Logtown, Miss.
Vice-President of Dramatic Club, Y.W.C.A., Sophomore Representative of Student Council. Lovely long blonde hair . . . smiles . . . sympathetic . . . dependable . . . artistic.



College

MYRA DUNNAM

Wiggins, Miss.
Y.W.C.A., Band, Basketball. My baby . . . Always in a hurry to get somewhere—Ed list . . . frank . . . Queenie . . . neat . . . "Myra" and "Ed".



BOB DUTTON

Moss Point, Miss.
Y.M.C.A., Commercial Club, President of Sophomore Class. Likeable . . . neat . . . jolly . . . clever . . . voices his own opinion . . . business man . . . "Bob".

L. S. DYESS, JR.

Hattiesburg, Miss.
President of Agriculture Club, Choir, Y.M.C.A. Married . . . "Songbird" . . . neat . . . friendly . . . hard worker.



EDWARD EVANS

Perkinston, Miss.
Football, Future Teachers of America, Basketball, "P" Club, Baseball, Track, Y.M.C.A. I'm Ed . . . watch the Fords go by . . . fun . . . independent—except for Myra . . . "Blonde Kid".

LOUISE FLYNT

Agricola, Miss.
Band, Glee Club, Commercial Club, Annual Staff, Y.W.C.A. Enthusiastic . . . lovely short blonde hair . . . loveable . . . dresses nicely . . . oh! that smile . . . "Lou".



WAIDE GALLÉ

Ocean Springs, Miss.
Newman, Language Club, Band, Orchestra, Y.M.C.A. Steady . . . carefree . . . hard worker . . . pleasant . . . enjoys loafing . . . "Mary Lou".

BOBBIE NELL GERMANY

Kreole, Miss.
Drum Majorette, Y.W.C.A., Baptist Student Union, Commercial Club, Choir, Ensemble. Delicate features . . . easy going . . . nice speaking voice . . . wonderful disposition . . . "Bobbies".



EDWARD GOFF

Pascagoula, Miss.
International Relations Club, Phi Theta Kappa, Agriculture Club, Y.M.C.A.

Sophomores

ROBERT GOFF

Pascagoula, Miss.
Y.M.C.A., Agriculture Club, Basketball, Track, "P" Club. Tough, but oh, so gentle . . . Brainy . . . argumentative . . . friendly.



WALLACE GORDON

Hattiesburg, Miss.
Vice President of Agriculture Club, "P" Club, Y.M.C.A. Considerate . . . quick smile . . . worker . . . enjoys life . . . basketball . . . friendly.

ROBERT GORDON

Hattiesburg, Miss.
Basketball, Track, Agriculture Club, "P" Club, Y.M.C.A. Easy to get along with . . . basketball floor work . . . likeable . . . quiet . . . fun.



BILLY RAY GREGG

Taylorsville, Miss.
President of Phi Theta Kappa, International Relations Club, Bulldog Barks Staff, Y.M.C.A. Conscientious . . . Oh! those big words . . . precise . . . more than his share of gray matter . . . helpful.

BOB HADEN

Robertsdale, Ala.
Y.M.C.A. Obliging . . . enthusiastic . . . "Coast" . . . good company . . . solemn but witty . . . nice.



ROBERT HAM

Pascagoula, Miss.
Y.M.C.A., Wesley, Language Club. Earnest . . . always doing something for others . . . slow talk . . . bashful smile . . . helpful.

BENNIE RAY HARRISON

Lucedale, Miss.
Language Club, Phi Theta Kappa, Y.M.C.A. Short . . . agreeable . . . neat . . . quiet . . . understanding . . . capable.



FLORENCE HAVENS

Perkinston, Miss.
Treasurer of Wesley, Y.W.C.A., Future Teachers of America, Basketball. Pleasing smile . . . youthful . . . blushes . . . friendly . . . loveable . . . carefree.

College

GLEN HAYNES

Lucedale, Miss.
Agriculture Club, Y.M.C.A. Happy-go-lucky . . . dresses nicely . . . sunny disposition . . . studious . . . swell guy.

PAUL HERRING

Leakesville, Miss.
Future Teachers of America, Baseball, Y.M.C.A. Facetious . . . I don't remember now, Prof. . . . shy, but a swell guy . . . "Mr. D.A."



MYRTLE MAE HODA

Gulfport, Miss.
Band, Newman, Glee Club, Y.W.C.A., Ensemble, Basketball, Christian Council. Hard working gal—to catch a man! . . . lovely disposition . . . clothes' grandma . . . fun.

THOMPSON BYRD HOLLEMAN

Perkinston, Miss.
Treasurer of Agriculture Club, Y.M.C.A., Bulldog Barks. "Our Byrd" . . . hard working . . . studious . . . friendly . . . jolly.



ANNA BELLE JAMES

Long Beach, Miss.
Christian Council, Cheerleader, Y.W.C.A., Home Economics, Annual Staff. Industrious . . . short, but sweet, ask Pat . . . witty . . . friendly . . . cute as a picture.

FRED JONES

Leland, Miss.
Football, Agriculture Club, "P" Club, Y.M.C.A. Clean-cut . . . determined . . . load of fun, eh Louise? . . . those come hither eyes . . . likeable.



NINA FAYE KENDRICK

Gulfport, Miss.
Quiet . . . delightful company . . . neat . . . earnest . . . reserved . . . soft voice.

ARTHUR KERNS

Gulfport, Miss.
Agriculture Club. Basketball blues . . . shy, quiet . . . likeable . . . worker . . . slow talker.



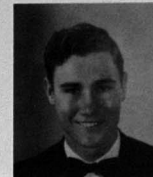
Sophomores

KIRBY KING

Pascagoula, Miss.
"P" Club, Football, Future Teachers of America. Nice . . . polite . . . agreeable . . . jokes . . . slow walk . . . No! I have to wait for Ouida!

ROSE MARIE KUEHL

Gulfport, Miss.
Y.W.C.A., Glee Club, Wesley. Smiles . . . good disposition . . . friendly . . . frank . . . works hard . . . helpful.



ORAN "MICKY" LACEWELL

Pascagoula, Miss.
Editor of Bulldog Barks, Y.M.C.A., Language Club, International Relations Club, Phi Theta Kappa. Friendly . . . "The Kid" . . . Texas . . . back home this, that . . . carefree . . . worker . . . jokes.

SPURGEON LACHAUSSEE

Pascagoula, Miss.
"P" Club, Football. Married . . . wistful look . . . agreeable . . . dresses neat . . . tall, dark, and handsome.



JUANITA LLOYD

Gulfport, Miss.
Phi Theta Kappa. Pretty hair . . . studious . . . reserved . . . soft voice . . . sparkling . . . kind . . . "Juanita".

JO ANN McBAY

Lucedale, Miss.
Wesley, Commercial Club, Annual Staff, Glee Club, Band Ensemble. Independent . . . likeable . . . obliging . . . flair for clothes . . . dry wit . . . "Jo Ann".



ALLYN MILLER

Gulfport, Miss.
Choir, Y.M.C.A., Future Teachers of America, International Relations Club, Wesley, Bulldog Barks, Art Club, Annual Staff. Aesthetic Dancer . . . annual work . . . neat dresser . . . gay—debonair . . . extra homework . . . "Twitter".

JOSEPH M. MATRANGA

Mobile, Ala.
Football, "P" Club, Newman. Loud . . . freckles . . . happy . . . talk, talk, talk . . . determined . . . we like him . . . "Joe".



College

JACK MILLER

Lucedale, Miss.
Y.M.C.A. Agreeable . . . happy-go-lucky . . . friendly.

MARVIN MORGAN

McLaurin, Miss.
Agriculture Club, Y.M.C.A. Athletic . . . agreeable . . . loves "Bees".



OIDA MURRAY

Wiggins, Miss.
Y.W.C.A., Future Teachers of America, Cheerleader.
Oh! baby . . . Kirby did it . . . laugh, cry, laugh . . . talk, talk, talk . . . joke . . . friendly . . . attractive clothes.

LEROY NASH

North Bergen, New Jersey
Y.M.C.A. Married . . . tall . . . Vet . . . hard worker in school . . . straight-forward . . . Little D.A.



FLOYE O'NEAL

Perkinston, Miss.
International Relations Club, Y.W.C.A., Phi Theta Kappa, Wesley, Annual Staff, Bulldog Barks. Good jokes . . . intelligence plus . . . that unforgettable laugh . . . alert . . . "Our Webfoot".

JED O'NEAL

Perkinston, Miss.
Agriculture Club. Bus boy . . . obliging . . . swell guy . . . tiny . . . steady worker . . . friendly . . . "Jed".

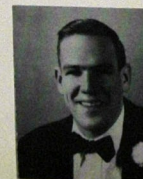


TOMMY PAGE

Bay Minette, Ala.
Y.M.C.A., Football, "P" Club. Short but sweet—right Jackie? . . . likeable . . . frank . . . dry wit . . . laugh for us Tommy!

JOE PAVICH

Biloxi, Miss.
Art Club, Dramatic Club, Newman, Annual Staff, Y.M.C.A. Jet black hair . . . dramatic . . . clever . . . friendly . . . "You know" . . . polite . . . carefree . . . dancer . . . "Joe and the Coast".



Sophomores

BUNYAN PIERCE

Lyman, Miss.
President of Student Council, "P" Club, Future Teachers of America. Hard worker . . . believes in work—as well as Winona . . . likeable . . . jokes . . . basketball star . . . alert.

NORMA JUNE RANDOLPH

Gulfport, Miss.
Wesley, Dramatics (Reporter), Cheerleader, Home Economics Club. Cute freckles . . . girl with the cheers . . . check that laugh and grin . . . loads of fun . . . "Norma".



BETTYE ROBERSON

Wiggins, Miss.
Band. Lovely blonde hair . . . alert . . . day-student . . . good mixer . . . "Bettye".

WINONA RUSHING

Biloxi, Miss.
Vice President of Y.W.C.A., Vice President of Home Economics Club, Secretary and Treasurer of Women's Intramural Association, Wesley, Basketball. Gym girl . . . soft voice . . . her eyes are truly open—for Bunyan to look into! . . . poised.



LAURANCE "BUDDY" RUSS

Gulfport, Miss.
Y.M.C.A., Wesley, President of Christian Council. Believes in work as well as play . . . wonderful helper . . . fun . . . "Preacher Russ".

PAUL RYAN

Pascagoula, Miss.
International Relations Club, Secretary of "P" Club, Future Teachers of America, Football, Track, Y.M.C.A. Carefree . . . good mixer . . . amusing . . . lives in the Grill . . . original . . . "Paul".



GEORGENA RYERSON

Pascagoula, Miss.
Wesley (Vice-President), Annual Staff, Y.W.C.A., Language Club (Vice-President), Christian Council. Short but sweet . . . nice clothes . . . check that laugh . . . jitterbug . . . alert.

NORAH SEYMOUR

Biloxi, Miss.
Newman, Baseball. Brawny . . . jolly . . . works hard to keep from working.



College

OTIS SHATTLES

Moss Point, Miss.
Football, Future Teachers of America, "P" Club, Basketball, Baseball, Track, Baptist Student Union. Carefree . . . gay . . . surprising sense of humor . . . likeable . . . loves those girls.

MELROSE SIMMONS

Biloxi, Miss.
Choir, Ensemble, Future Teachers of America, International Relations Club, Y.W.C.A. Tinkling laugh . . . Itty Bitty . . . bubbling . . . songbird . . . cute . . . nice clothes . . . "Mel".

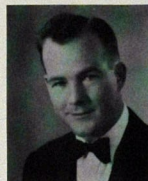


RUBY HELEN SIMMONS

Lucedale, Miss.
Y.W.C.A., International Relations Club, Future Teachers of America, Basketball, Choir, Sophomore Representative of Athletic Board. Can talk your ear off . . . jolly . . . "make that point" . . . tall . . . alert.

C. L. SLADE

Maxie, Miss.
Agriculture Club, Phi Theta Kappa, Y.M.C.A. Engaging . . . sound thinking . . . modest . . . nice to be around . . . neat . . . "C. L."

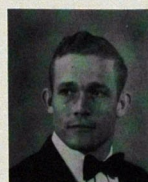


JOHN STARR

Gulfport, Miss.
President of International Relations Club, Vice President of Sophomore Class, Phi Theta Kappa, Newman. Mischievous . . . jokes . . . alert . . . smart . . . dramatic inclinations . . . "Jack".

BUFORD STRONG

Gulfport, Miss.
"P" Club, Basketball. Brawny . . . good natured . . . "Juanita" . . . agreeable . . . sociable.

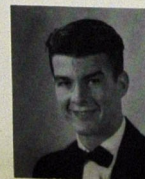


DONALD VINCENT

Agricola, Miss.
Language Club, Y.M.C.A. Penetrating eyes . . . bouncing step . . . friendly . . . Lucedale gal . . . "Don".

THEODORE VLAHOS

Pascagoula, Miss.
"P" Club, Football, Track. Slow moving . . . friendly . . . "Wake up Theodore" . . . fun . . . Touchdown Kid! . . . Greek.



Sophomores

EVELYN WALKER

Plant City, Florida
Y.W.C.A., Secretary of Commercial Club. Dependable . . . hard worker . . . loveable . . . obliging . . . serious minded . . . neat.

WENDELL WATSON

Wiggins, Miss.
Band. Hard worker . . . considerate . . . dry wit . . . sincere . . . "Pee Wee".



PHILIP WEISS

Gulfport, Miss.
Band, Y.M.C.A., Choir, Bulldog Barks. The Pied Piper . . . pleasant . . . Oh! those cards . . . talkative . . . "P.J."

CHRISTINE WELLBORN

Pascagoula, Miss.
Choir, Girls' Ensemble, Wesley, Y.W.C.A. Her eyes are truly "Windows of the Soul" . . . soft voice . . . pretty . . . fun.



BETTYE WENGER

Gulfport, Miss.
Home Economics Club. Pretty hair . . . compatible . . . blushes . . . day student—nights at home? . . . alert.

WALLACE WHATLEY

Pascagoula, Miss.
Y.M.C.A., Band, Glee Club, Orchestra, Future Teachers of America, Baptist Student Union. Determined . . . straight-forward . . . I'm here . . . ping pong . . . cornet . . . "Wally".



MAXINE WHITE

Moss Point, Miss.
Choir, Y.W.C.A., Ensemble, Commercial Club, Secretary and Treasurer of Sophomore Class. Attractive sport clothes . . . Max and "The Crow" . . . "git up and go" . . . magnetic personality . . . radiant smile . . . dependable.

GEORGE WINTER

Pascagoula, Miss.
International Relations Club, Reporter of Sophomore Class, Y.M.C.A. Cupid . . . good-natured . . . neat . . . goes home every week-end—what's up? . . . obliging . . . "George".



College Freshmen



Officers

Joe D'Angelo President
 Charles Bates Vice-President
 Carolyn Martin Secretary-Treasurer
 Bill Vance Reporter
 Mr. Binford Truett Nash Sponsor

Freshmen

FRED ALSUP

Angola, La.
 Football, Freshman Representative of Student
 Council, Y.M.C.A.



PETER ANDERSON

Ocean Springs, Miss.
 Y.M.C.A.

MARVIN ANGLODA

Biloxi, Miss.
 Y.M.C.A., Language Club.



PERRY BAGGS

Elgin Field, Fla.
 Y.M.C.A., Wesley, Choir, Annual Staff.

BOBBIE BANKSTON

Pascagoula, Miss.
 Art Club, Future Teachers of America, Glee Club,
 Y.W.C.A., Baptist Student Union.



CHARLES BATES

Pass Christian
 Football Manager, Choir, Camera Club, Y.M.C.A.

RUSSELL BEAULIEU

Highstown, N. J.
 Band, Y.M.C.A.



JIMMY BERRY

Perkinston, Miss.
 Agriculture Club, Y.M.C.A.

College

VAN BLACKLEDGE
Gulfport, Miss.
Wesley, Y.M.C.A.



ALBERT BLEN
San Jose, Costa Rica
Newman, Y.M.C.A.



BUDDY BOLTON
Mobile, Ala.
Wesley, Y.M.C.A.



WALLACE BOND
Biloxi, Miss.
Baptist Student Union, Y.M.C.A., Language Club.



WILTON BOND
Saucier, Miss.
Baptist Student Union, Y.M.C.A.



FREDDIE BORGANELLI
Shaw, Miss.
Football, Y.M.C.A.



JAMES BOWDWIN
Biloxi, Miss.
Football, "P" Club, Future Teachers of America,
Y.M.C.A.



WALTER BRELAND
Biloxi, Miss.
Baptist Student Union, Basketball Manager, Agriculture Club, President of Future Teachers of America, Y.M.C.A.



Freshmen

ELLZEY BURCH
Biloxi, Miss.
Football, Y.M.C.A.



ARGIE BURSTEIN
Gulfport, Miss.
Y.W.C.A.



DELBERT BYRD
Mobile, Ala.
Commercial Club, Y.M.C.A.



FAYE CAMERON
Wiggins, Miss.
Commercial Club, Y.W.C.A.



CLYDE CAMP
Biloxi, Miss.
Baptist Student Union, Y.M.C.A.



PHILIP CAPUANO, JR.
Biloxi, Miss.
Newman Club.



CLYDE CHAMBERS
Florala, Ala.
Baptist Student Union, Y.M.C.A.



ZANE CHASTAIN
Jackson, Ala.
Football, Choir, Y.M.C.A.



College

BETTYE CLEVELAND

Gulfport, Miss.
Glee Club, Dramatics, Y.W.C.A., Baptist Student Union.

RICHARD COLLINS

Shaw, Miss.
Baptist Student Union, Y.M.C.A., Manager of Football, Basketball.



EDGAR CUEVAS

Gulfport, Miss.
Newman Club, Y.M.C.A., Agriculture Club.

CLEVELAND CUMBEST

Pascagoula, Miss.
Future Teachers of America, Y.M.C.A.

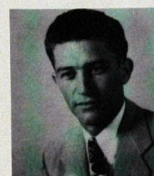


RALPH CUMBEST

Pascagoula, Miss.
Agriculture Club, Future Teachers of America, Y.M.C.A.

JOSEPH D'ANGELO

Gulfport, Miss.
International Relations Club, Newman, President of Freshmen, Amvets, Future Teachers of America, Y.M.C.A.

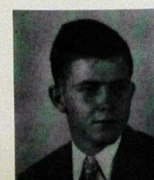


LEON DAVIS

Elba, Ala.
Y.M.C.A.

HASPUR DENNING

Perkinson, Miss.
Baptist Student Union, Y.M.C.A.



Freshmen

LEON DUNCAN

Saucier, Miss.
Future Teachers of America, Y.M.C.A.

RONALD EDMONSON

Mobile, Ala.
Commercial Club, Y.M.C.A.



BEATRICE ELLIS

Ocean Springs, Miss.
Baptist Student Union, Y.W.C.A., Business Manager of Annual.

IVAN ELLIS

Ocean Springs, Miss.
Baptist Student Union, Future Teachers of America, Y.M.C.A.



VIRGINIA ETHERIDGE

Lucedale, Miss.
Baptist Student Union, Y.W.C.A.

NATHAN EVERETT

Moss Point, Miss.
Baptist Student Union, Y.M.C.A.



EVELYN FENDLEY

Lucedale, Miss.
Y.W.C.A., Glee Club.

RUSS FERRARA

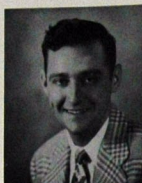
New Orleans, La.
Newman Club, Y.M.C.A.



College

BENNIE RAY FERRELL

Wiggins, Miss.
Y.M.C.A.



THOMAS FERRELL

Biloxi, Miss.
Football, Y.M.C.A., Future Teachers of America.



BOBBY GARDNER

Ocean Springs, Miss.
Y.M.C.A., Wesley, Football, "P" Club.



HELEN GARDNER

Ocean Springs, Miss.
Wesley, Assistant Grill Manager.



EDWIN GOODRICH

Gulfport, Miss.
Newman, Y.M.C.A.



MARY LOU GUICE

Ocean Springs, Miss.
Band, Newman Club, Y.W.C.A., Commercial Club.



CLARENCE HAMILTON

Ocean Springs, Miss.
Wesley, Y.M.C.A.



KENNETH HAND

Foley, Ala.
Newman, Y.M.C.A.



Freshmen

GLOVIA HATTEN

Wiggins, Miss.
Glee Club, Future Teachers of America, Baptist
Student Union, Y.W.C.A.



ROBERT HEARNE

Biloxi, Miss.
Newman Club, Commercial Club, Sports Editor of
Annual, Y.M.C.A.



IDA BELLE HILDERBRAND

Wiggins, Miss.
Commercial Club.



BETTY HOLLAND

Lucedale, Miss.
Y.W.C.A., Baptist Student Union, Language Club.



CONNIE HOLLAND

Saucier, Miss.
Commercial Club (Secretary and Treasurer).



GLENN HUFF

Gulfport, Miss.
Choir, Dramatics, Language Club, Baptist Student
Union, Art Club, Y.M.C.A.



BILLY JACOBS

Elba, Ala.
Basketball, Baseball, Future Teachers of America,
Y.M.C.A.



LOUIS JANUS

Biloxi, Miss.
Newman, Commercial Club, Y.M.C.A.



College

NOAH JOHNSON

Saucier, Miss.
Glee Club, Y.M.C.A.

WILLARD KENNEDY

Pascagoula, Miss.
Agriculture Club, Y.M.C.A.



JENELLE KING

Biloxi, Miss.
Y.W.C.A., Baptist Student Union, Basketball, Women's Intramural Association, Future Teachers of America.

WILLIAM KORNMAN

Biloxi, Miss.
Band, Y.M.C.A.



HERMAN KRUSE

Biloxi, Miss.
Y.M.C.A.

KAY RUTH LADNER

Pass Christian, Miss.
Wesley, Y.W.C.A., Language Club (Vice-President).

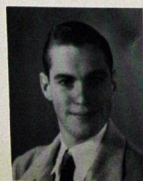


ORIN LOTT

Biloxi, Miss.
Language Club, Y.M.C.A.

WILLIAM LOWERY

Lyman, Miss.
Future Teachers of America, Agriculture Club, Baptist Student Union, Y.M.C.A.



Freshmen

SAM McCAULEY

Long Beach, Miss.
Band, Choir, Quartet, Y.M.C.A.

MANUEL McNEIL

Floral, Ala.
Football, Basketball, Y.M.C.A.



MORRIS McNEIL

Anguilla, Miss.
Football, Y.M.C.A.

ACE McVAY

Floral, Ala.
Future Teachers of America, Baptist Student Union, Y.M.C.A.



ETHELL MALONE

Lucedale, Miss.
Baptist Student Union, Y.W.C.A., Gershwin Club, Language Club.

CAROLYN MARTIN

Wiggins, Miss.
Secretary of Freshman Class, Home Economics, International Relations Club, Student Council, Dramatics, Y.W.C.A.



ROBERT MATHIS

Biloxi, Miss.
Track, Y.M.C.A.

JOHN MILES

Chickasaw, Ala.
Y.M.C.A., Wesley, Football.



College

GLORIA MOORE

Wiggins, Miss.

EMMA MULLEN

Mendenhall, Miss.
Baptist Student Union, Y.W.C.A.



DOROTHY NECAISE

Biloxi, Miss.
Y.W.C.A., Glee Club, Newman, Home Economics,
Basketball, Future Teachers of America.

DONALD NELSON

Taylorsville, Miss.
Y.M.C.A., Agriculture Club.



JOAN NEWMAN

Gulfport, Miss.
Secretary and Treasurer of Home Economics Club,
Song Leader of Y.W.C.A., Glee Club, Wesley, En-
semble.

MARY LOU NEWMAN

Pascagoula, Miss.
Wesley, Y.W.C.A., Future Teachers of America.



CLYDE OLIVER

Pascagoula, Miss.
Baptist Student Union, Y.M.C.A.

LAVON OLIVER

Pascagoula, Miss.
Y.M.C.A., Future Teachers of America, Tennis.



Freshmen

BILLY OVERTON

Gulfport, Miss.
Y.M.C.A.

DILLIE PARDEN

Perkinston, Miss.
Commercial Club, Baptist Student Union, Y.W.
C.A., Annual Staff.



JOHN PARKER

Biloxi, Miss.
Newman, Y.M.C.A.

KENNETH PEDEN

Pascagoula, Miss.
Y.M.C.A., Wesley (President), Future Teachers of
America.



MARVIN PILGRIM

Columbus, Miss.
Football, Baseball, Y.M.C.A.

REGINALD RICHARDS

Biloxi, Miss.
Dramatics, Y.M.C.A.



JIMMY ROGERS

Biloxi, Miss.
Newman, Bulldog Barks, Y.M.C.A.

ANNA ROSS

Ocean Springs, Miss.
Newman Club, Commercial Club, Freshman Rep-
resentative of Y.W.C.A.



College

JOE ROUSE

Saucier, Miss.
Agriculture Club, Basketball, Future Teachers of America, Baptist Student Union, Y.M.C.A.

LEONARD ROUSE

Moss Point, Miss.
Track, Future Teachers of America, Y.M.C.A.

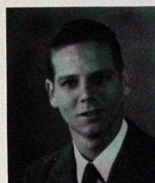


LILLIAN ROUSE

Lucedale, Miss.
Y.W.C.A., Baptist Student Union, Choir, Future Teachers of America, Language Club.

SIDNEY SCARBOROUGH

Biloxi, Miss.
Wesley, Y.M.C.A.



RICHARD SCHURMAN

Clermont Harbor, Miss.
President of Y.M.C.A., Wesley, Editor of Wesley Weekly, Ministerial League.

BERNARD SCHUSTER

Pascagoula, Miss.
Agriculture Club, Y.M.C.A.



LARSON SEYMOUR

Biloxi, Miss.
Newman, Dramatic Club, Basketball, Y.M.C.A.

CLOZELL SHAW

Saucier, Miss.
Agriculture Club.



Freshmen

LEWIS SMITH

Wiggins, Miss.

PATTI SPRUELL

Moss Point, Miss.
Ensemble, Y.W.C.A., Band, Majorette, Baptist Student Union, Vice President of Athletic Board, Freshman Representative of Y.W.C.A.



BONNIE JEAN STAMPS

Wiggins, Miss.
Band, Choir, Ensemble, Wesley, Y.W.C.A., Future Teachers of America.

BILL STRAIN

Pascagoula, Miss.
Glee Club, Band, Baptist Student Union, Y.M.C.A.



IVAN SUGAR

San Jose, Costa Rica
Y.M.C.A., Language Club.

CHARLES SUMRALL

Hattiesburg, Miss.
Future Teachers of America, Agriculture Club, Baptist Student Union, Y.M.C.A.



BILLIE SUTHERLIN

Wiggins, Miss.
Y.W.C.A.

WILLIAM THOMPSON

Columbus, Miss.
Commercial Club, Y.M.C.A.



College

WALTER TURCOTTE
Waveland, Miss.
Future Teachers of America, Newman Club,
Y.M.C.A.



FRANK S. UHER
Biloxi, Miss.
Band, Choir, Orchestra, Newman Club, Future
Teachers of America, Y.M.C.A.



LEROY URIE
Gulfport, Miss.
Football, Y.M.C.A.



BILL VANCE
Ocean Springs, Miss.
Commercial Club, Reporter of Freshman Class,
Y.M.C.A.



JOYCE WARD
Long Beach, Miss.
Wesley, Glee Club, Band, Ensemble, Y.W.C.A.



ALBERT WEAVER
Gulfport, Miss.
Football, Track, Tennis, Y.M.C.A.



CHARLIE WILSON
Hope, Arkansas
Football, Y.M.C.A.



HILLMAN WOLFE
Gulfport, Miss.
Y.M.C.A.



Freshmen



HARVEY WOODYARD
Biloxi, Miss.
Newman, Y.M.C.A., Annual
Staff.



**RICHARD
YARBROUGH**
Long Beach, Miss.
Dramatic Club, Language
Club, Y. M. C. A., Cheer
Leader.



CECIL YOUNG
Mobile, Ala.
President of Commercial
Club, Y.M.C.A.



High School Seniors



Senior Class Officers

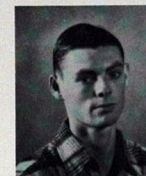
James Longcoy.....	President
Jacob Johnson.....	Vice-President
Patty Grayson.....	Secretary-Treasurer
Elwood Wolfe.....	Reporter
Miss Susie Cooley.....	Sponsor



High School Seniors



RUBEN BAKER
Shaw, Mississippi
Football, Y.M.C.A.



L. B. BARTON
Lucedale, Mississippi
Y.M.C.A.



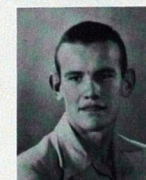
JOHN B. BUTCHER
Biloxi, Mississippi
Band, Y.M.C.A.



PATSY BYRNE
Wiggins, Mississippi
Cheerleader



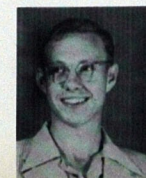
PAT CLIFTON
Biloxi, Mississippi



HOMER M. DIAMOND
Pensacola, Florida
Y.M.C.A.



JOHN ARLEN EVANS
Gulfport, Mississippi
Y.M.C.A.



GEORGE ERNIE FLURRY
Gulfport, Mississippi
Y.M.C.A.



MARTIN JOSEPH GENT
Hahnville, Louisiana
Football, Y.M.C.A.

High School Seniors

PATSY RUTH GRAYSON
Perkinston, Mississippi



GRACE GREGORY
Ocean Springs, Mississippi
Basketball, Y.W.C.A.
Band



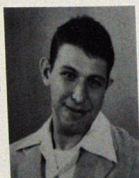
JACOB JOHNSON
Perkinston, Mississippi
Football, Y.M.C.A.



JAMES H. LONGCOY
Biloxi, Mississippi
Y.M.C.A.
Reporter for Ag. Club
President of Senior Class



EDWIN NATHAN RUBENSTEIN
Shaw, Mississippi
Manager for Football



MARY SUE SARTIN
Hub, Mississippi



DARIA SCHUBERT
New York, New York
Newman Club



ELWOOD CALVIN WOLFE
Camera Club, Y.M.C.A.



High School Juniors



Junior Class Officers

Flo Coleman	President
La Juan Bond	Vice-President
Vivian Bond	Secretary-Treasurer
Harry Moore	Reporter
Miss Evelyn Prescott	Sponsor



High School Juniors



LA JUAN BOND
Perkinston, Mississippi



VIVIAN BOND
Perkinston, Mississippi



PATRICIA CLARDY
New Orleans, Louisiana



FLO COLEMAN
Fairhope, Alabama



CRISTINA GALINDO
Tegucigalpa, Honduras



ANNE LUDLOW
Biloxi, Mississippi

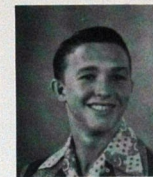


HENRY MAGERMANS
Guatemala, Guatemala

High School Juniors



MIGUEL MAZARIEGOS
Guatemala, Guatemala



ELWYN POPE
Lucedale, Mississippi



MARY ALICE PRICE
Perkinston, Mississippi



LOIS SMITH
Perkinston, Mississippi



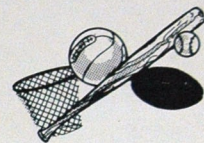
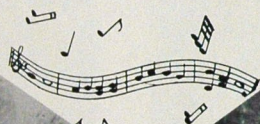
DORIS STEVENS
Gulfport, Mississippi



FAY SUMRALL
Perkinston, Mississippi



MATTIE SUMRALL
Perkinston, Mississippi



Student Council



OFFICERS

President Bunyan Pierce
 Vice-President John Caldwell
 Secretary-Treasurer Melrose Simmons

Floye O'Neal, Fred Alsup, Bob Seymour, Mr. Weniger, Bunyan Pierce, Miss Prescott, Mrs. Watson, Carolyn Martin, John Caldwell, Melrose Simmons, John Butcher.



Christian Council



OFFICERS

President Buddy Russ
 Vice-President Anna Bell James
 Secretary Myrt Hoda
 Reporter Betty Jo Davis

SEATED: Reverend Duke, Miss Harrell, Georgena Ryerson, Buddy Russ, Myrt Hoda, Betty Jo Davis, Mrs. Watson. STANDING: Mr. Gregory, Mr. May, Mr. Weniger, Mr. Brigance.



Y.M.C.A.



OFFICERS

President	Richard Schurman
Vice-President	Pat Allen
Secretary-Treasurer	Bobby Bailey
Reporter	Sidney Cuevas
Sponsor	Mr. Weniger

ROW 1: James Longcoy, Pat Allen, Allen Bush, Fred Alsup, Otis Shattles, Bunyan Pierce, Richard Collins. ROW 2: Waide Gallé, Jack Starr, Paul Ryan, Robert Gordon, Charles Bates. ROW 3: Louis Janus, Billy Overton, Hillman Wolfe, Ashton Randall, Joe Rooker. ROW 4: Bennie Ray Harrison, L. S. Dyess, Glenn Huff, Buddy Russ, Nathan Everett, Sylton Cole, Sam McCauley, Richard Yarborough. ROW 5: Robert Hearne, Fred Jones, Jimmy Berry, Billy Ross Berry, Joe Rouse, Charles Sumrall, William Goddard, Wallace Whatley. ROW 6: Elwood Wolfe, Wallace Gordon, Ivan Sugar, Harvey Woodyard, Frank Uher, Ellezy Burch, Glenn Haynes, Billy Lowery, Robert Ham, Ronnie Edmonson, Martin Gendron, Byrd Holloman, Mickey Lacewell, Bobby Bailey.

Y.W.C.A.



OFFICERS

President	Anna Belle James
Vice-President	Winona Rushing
Secretary	Evelyn Fendley
Treasurer	Betty Jo Davis
Sponsor	Miss Frances Harrell

ROW 1: Helen Chapman, Christime Wellborn, Mara Lou Guice, Carolyn Martin, Melrose Simmons, Georgina Ryerson, Joan Newman, Joyce Ward. ROW 2: Miss Harrell, Evelyn Fendley, Kay Ruth Ladner, Joy Creel, Betty Jo Davis, Florence Havens, Dilly Pardon. ROW 3: Flo Coleman, Betty Holland, Floye O'Neal, Anna Ross, Muff Brown, Connie Holland, Sue Sartin. ROW 4: Bettye Jo Davis, Pat Clifton, Mary Lou Newman, Bobbie Bankston, Ethel Mae Malone, Lillian Rouse, Dot Necaize. ROW 5: Louise Flynt, Beatrice Ellis, Patti Spruell, Janell King, Winona Rushing, Virginia Etheridge, Ruby Helen Simmons. ROW 6: Ann Ludlow, Glovia Hatten, Rose Marie Kuehl.

B. S. U.



OFFICERS

President	Betty Jo Davis
Vice-President	Patti Spruell
Secretary-Treasurer	Mary Elsie Peterson
Reporter	Allen Bush
Sponsor	Roy Bregance

ROW 1: Sue Sartin, Ann Ludlow, Ethel Mae Malone, Dilly Parden, Muff Brown, Betty Jo Davis, Jenelle King, Patti Spruell. ROW 2: Bobbie Bankston, Glovia Hatten, Evelyn Fendley, Betty Jo Davis, Beatrice Ellis. ROW 3: Allen Bush, Roy Brigance, Richard Collins, Ivan Sugar, Clyde Oliver, Nathan Everett, Wallace Whatley, Glenn Huff, Ace McVay.

Newman Club



OFFICERS

President	Fritz Uher
Vice-President	Myrt Hoda
Secretary-Treasurer	Joy Creel
Program Chairman	Jack Starr
Reporter	Dot Necaise
Sponsor	Mrs. Watson

ROW 1: Mrs. Watson, Daria Schubert, Anna Ross, Dot Necaise, Joy Creel, Mara Lou Guice, Myrt Hoda. ROW 2: Sidney Cuevas, Joe Pavich, Edgar Cuevas, Waide Gallé, Henry Mangerman. STANDING: Jack Starr, Dantzler Moran, Vernon Cuavas, Martin Gendron, Russ Ferrara, Louis Janus, Fritz Uher, John Parker, Jimmy Rogers, Alberto Blen, Charlie Stricklin.

Wesley Foundation



OFFICERS

President ----- Hillman Wolfe
 Vice-President ----- Georgena Ryerson
 Secretary ----- Floye O'Neal
 Treasurer ----- Florence Havens
 Editor ----- Richard Schurman
 Sponsor ----- Rev. Duke

ROW 1: Georgena Ryerson, Helen Chapman, Kay Ruth Ladner, Christine Welborn, Joan Newman. ROW 2: Floye O'Neal, Rose Marie Kuehl, Florence Havens, Flo Coleman. ROW 3: Hillman Wolfe, Reverend Duke, Buddy Russ.

Language Club



OFFICERS

President ----- Tom Gantt
 Vice-Presidents ----- Georgena Ryerson, Kay Ruth Ladner
 Secretary-Treasurer ----- Joe Pavick
 Sponsor ----- Miss Susie Cooley

ROW 1: Helen Strickland, Beatrice Ellis, Joyee Ward, Georgena Ryerson. ROW 2: Allen Bush, Betty Holland, Mara Lou Guice, Kay Ruth Ladner, Ethel Mae Malone, Jack Starr. ROW 3: Hillman Wolfe, Glenn Huff, Waide Gallé, Bennie Ray Harrison, Ken Carver, Mickey Lacewell. ROW 4: Fred McDonald, Zane Chastain, Buddy Russ, Bob Bailey. ROW 5: Sam McCauley, Tom Gantt, John Ward. ROW 6: Nathan Everett, Robert Ham, Ivan Sugar. ROW 7: Harvey Woodyard, Phillip Capuano.



Home Economics Club



OFFICERS

President	Betty Jo Davis
Vice-President	Winona Rushing
Secretary-Treasurer	Joan Newman
Reporter	Mary Elsie Peterson
Sponsor	Miss McInnis

ROW 1: Norma June Randolph, Anna Bell James, Miss McInnis. ROW 2: Daria Schurbert, Carolyn Martin, Joy Creel, Mary Elsie Peterson, Winona Rushing. ROW 3: Mary Alice Price, Glovia Hatten, Dot Necaise, Myrtie Mae Hoda, Mara Lou Guice. ROW 4: Pat Clifton, Vivian Bond, Mattie Louise Sumrall, Flo Coleman.



Agriculture Club



OFFICERS

President	L. S. Dyess
Vice-President	Wallace Gordon
Secretary	Dantzler Moran
Treasurer	Byrd Holleman
Reporter	James Longcoy
Sponsor	Mr. Gammage

ROW 1: Charles Sumerall, Kenneth Hand, Billy Ray Gregg, Byrd Holleman, Elwood Wolfe, Sidney Cuevas. ROW 2: Willard Kennedy, Morris McNeil, Robert Goff, L. S. Dyess, George Flurry, Donald Nelson. ROW 3: Glyn Haynes, Harry Davis, Biss Lowery, Mr. Gammage, Edward Goff, C. L. Slade. ROW 4: Edgar Cuevas, Ralph Cumbest, James Longcoy, Dantzler Moran, Larry Breeland.



Phi Theta Kappa



OFFICERS

President ----- Billy Ray Gregg
 Vice-President ----- Pat Allen
 Secretary ----- Jaunita Lloyd
 Treasurer ----- Bennie Ray Harrison
 Reporter ----- Calvin Bruland
 Sponsor ----- Miss Susie Cooley

SEATED: Jaunita Lloyd, Floye O'Neal. STANDING: Jack Starr, Ken Carver, Billy Ray Gregg, Mrs. Lottie Sudduth, Pat Allen, Edward Goff, C. L. Slade, Bennie Ray Harrison.



International Relations Club



OFFICERS

President ----- Jack Starr
 Vice-President ----- Floyd Miller
 Secretary-Treasurer ----- Betty Jo Davis
 Reporter ----- Floye O'Neal
 Sponsors ----- Mr. Nash & Mr. Hickman

ROW 1: Anna Belle James, Carolyn Martin, Floye O'Neal, Mrs. Sudduth, Betty Joe Davis, Helen Chapman. ROW 2: Bob Bailey, Allyn Miller, Pat Allen, Mickey Laceywell, Ken Carver, Allen Bush, Jack Starr. ROW 3: Billy Ray Gregg, Byrd Holleman, Floyd Miller, Tom Gantt, Edward Goff, Mr. Hickman.



Bull Dog Barks Staff



OFFICERS

Editor	Mickey Lacewell
Assistant Editor	Floye O'Neal
Business Manager	Marby Penton
Literary Editor	Allyn Miller
Exchange Editor	Billy Ray Gregg
Assistant	Byrd Holleman
Circulation Editor	Ruby Helen Simmons
Reporters	Jimmy Rogers, Wallace Whatley
Byrd Holleman, Allyn Miller	
Photographers	Chester Finley, P. J. Weiss
Elwood Wolfe	
Columnists	Billy Ray Gregg, Allyn Miller
Floye O'Neal, Mickey Lacewell	
Faculty Advisor and Sponsor	Miss Frances Harrell

SEATED: P. J. Weiss, Allyn Miller, Miss Harrell, Billy Ray Gregg, Chester Finley, Floye O'Neal, Jimmy Rogers. STANDING: Mickey Lacewell, Byrd Holleman, Elwood Wolfe.



Annual Staff



OFFICERS

Editor-in-Chief	Bobby Bailey
Assistant Editor	Georgena Ryerson
Photography	Elwood Wolfe
Business Managers	Jackie Bryan and Beatrice Ellis
Sports	Robert Hearne and Dilly Parden
Art Editor	Anna Bell James
Features	Louise Flynt, Jo Ann McBay
Allyn Miller, Jackie Bryan	
Sponsor	Mrs. Natalie B. Watson

SEATED: Anna Bell James, Louise Flynt, Jo Ann McBay, Jackie Bryan, Joe Pavich, Pat Clifton, Robert Hearne, Mrs. Watson, Allyn Miller.
STANDING: Elwood Wolfe, Georgena Ryerson, Bobby Bailey, Chester Finley.



Women's Intramural Association



OFFICERS

President	Rae Bell Boone
Vice-President	Betty Jo Davis
Secretary-Treasurer	Winona Rushing
Reporter	Floye O'Neal
Sophomore Representative	Ruby Helen Simmons
Freshman Representative	Patti Spruell
High School Representative	Grace Gregory
Sponsor	Miss Evelyn Prescott

SEATED: Winona Rushing, Betty Jo Davis, Patti Spruell, Miss Prescott, Rae Bell Boone. STANDING: Floye O'Neal, Ruby Helen Simmons.



"P" Club



OFFICERS

President	Douglas Boone
Vice-President	Bunyan Pierce
Secretary-Treasurer	Paul Ryan
Reporter	Sylton Cole
Sponsors	Coaches Westerfield, Tollett, Saia & Nash

ROW 1: Otis Shattles, Ashton Randall, Fred Jones. ROW 2: Wallace Gordon, Sylton Cole, Paul Ryan, Robert Gordon. ROW 3: Bunyan Pierce, Billy Ross Berry.



Art Club



OFFICERS

President	Allyn Miller
Vice-President	Joe Pavich
Secretary	Bobbie Bankston
Treasurer	Bonnie Avera
Reporter	Glenn Huff
Sponsor	Mrs. R. A. Switzer

Allyn Miller, Joe Pavich, Bobbie Bankston, Glenn Huff, Mrs. R. A. Switzer, Bonnie Avera, Miss Harrell, Mrs. Weniger.



Camera Club



OFFICERS

President	Elwood Wolfe
Vice-President	Chester Finley
Secretary-Treasurer	Helen Chapman
Reporter	George Flurry
Sponsor	Mr. Delbert Weniger

ROW 1: Glenn Huff, Ann Ludlow, Glovia Hatten, Helen Chapman, Allen Bush, P. J. Weiss, Pat Clifton. ROW 2: Byrd Holleman, Joe Pavich, Ronnie Edmonson, Larry Breeland. ROW 3: Chester Finley, Elwood Wolfe, George Flurry.



Commercial Club



OFFICERS

President	Robert Hearne
Vice-President	Bill Vance
Secretary-Treasurer	Connie Holland
Reporter	Dilly Parden
Sponsors	Mrs. W. G. Gregory and Mr. W. F. Haley

ROW 1: Mrs. Gregory, Anna Ross, Kay Ruth Ladner, Mara Lou Guice, Bobbie Nell Germany, Jackie Bryan, Dilly Parden, Christina Galindo. ROW 2: Jack Starr, Bettye Roberson, Gloria Moore, Jo Ann McBay, Louise Flynt, Helen Chapman, Robert Hearne. ROW 3: Connie Holland, Ann Ludlow, Maria Galardo, Billy Overton, Chester Finley. ROW 4: Elwood Wolfe, Louis Janus, Bunyan Pierce, Bob Dutton, William Thompson, Bill Vance. ROW 5: Bobby Bailey, Delbert Byrd, Vernon Cuevas, Ellezy Burch, Walter Breeland, Mr. Haley, Theodore Vlahos, Rovert Seymour, Ronnie Edmonson, Otis Shattles, Fred Alsup.



Future Teachers of America



OFFICERS

President	Walter Breeland
Vice-President	Kenneth Carver
Secretary-Treasurer	Sidney Cuevas
Reporter	Floye O'Neal
Sponsor	Mr. N. W. Hickman

ROW 1: Floye O'Neal, Carolyn Martin, Melrose Simmons, Helen Chapman, Christine Welborn, Florence Havens. ROW 2: Myrt Hoda, Dot Necaise, Evelyn Fendley, Patti Spruell, Mary Ellen Brown, Jenelle King, Betty Jo Davis. ROW 3: Lillian Rouse, Mary Lou Newman, Bobbie Bankston, Glovia Hatten, Rose Marie Kneul, Virginia Etheridge, Ruby Helen Simmons. ROW 4: Fred Jones, Ashton Randall, Paul Ryan, Sylton Cole, Charles Sumrall, Walter Breeland, Theodore Vlahos, Robert Mathis, Ken Carver. ROW 5: Vernon Cuevas, Otis Shattles, Ellezy Burch, Thomas Ferrill, Fred Alsup, Clyde Camp, Lavon Oliver, Mr. B. T. Nash, Mr. N. W. Hickman. ROW 6: Frank Uher, Noah Johnson, Joe Rouse, Bill Lowery.



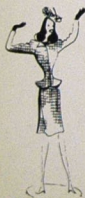
Dramatic Club



OFFICERS

President Allen Bush
 Vice-President Shirley Dean
 Secretary-Treasurer Ouida Murray
 Reporter Norma June Randolph
 Sponsor Mrs. Watson

ROW 1: Betty Cleveland, Norma June Randolph, Flo Coleman, Carolyn Martin, Shirley Dean. ROW 2: Mrs. Watson, Ouida Murray, Mrs. Sudduth, Allen Bush, Glen Huff. ROW 3: Wallace Bond, Reginald Richards, P. J. Weiss, Larson Seymour, Pete Denton, Bob Bailey.



84

Band



ROW 1: Majorette Mascots: Mary Ann Westerfield, Patricia Ann Ware. ROW 2: Left to Right—Bobbie Nell Germany, Geraldine Jordan, Janet Ellsberry, Myrtie Mae Hoda, Myra Dunnam, Mary Ellen Brown, Pattie Spruell, June Cox, Mr. J. O. Ware, Director. ROW 3: Grace Gregory, Russell Beaulieu, Jimmy Bond, Winton Walker, Chester Finley. ROW 4: Billy Bannister, William Kornman, Flo Coleman, Joyce Ward, Cynthia Lott, Joann Rouse, Jean Burnham, Bonnie Avery, Mary Lou Guice. ROW 5: Byrd Holleman, Bonnie Jean Stamps, Joy Creel, Billie Clarke Simmons, Jeany Avery, Wallace Whatley. ROW 6: Adrian Dubisson, Allyn Miller, Philip Weiss, Carolyn Cox, John Butcher, Billy Strain, Betty Roberson, Wade Galle, Frank Uher. ROW 7: Donald Cunningham, Jackie Bryan, Larry Breland, Wendall Watson, Louise Flynt, Sam McCauley, Shannon Slyfield, Jo Ann McBay.

Girls' Ensemble



Christine Wellborn, Betty Cleveland, Melrose Simmons, Sue Sartin, Myrt Hoda, Jo Ann McBay, Bobbie Nell Germany, Bonnie Jean Stamps, Jackie Bryan. Pianist: Jeanne Avries. Sponsor (not pictured): Miss Monita Prine.

Choir



OFFICERS

President.....	Shannon Slyfield
Vice-President	Jimmy Flannigan
Secretary-Treasurer.....	Wallace Whatley
Reporter	Maxine White
Business Manager.....	Bill Strain
Sponsor (not pictured).....	Mr. Eugene Clement

ROW 1: Christine Wellborn, Betty Cleveland, Melrose Simmons, Sue Campbell, Dot Necaize, Lillian Rouse, Flo Coleman, Jeanne Avera, Sue Sartin, Bobbie Nell Germany, Jackie Bryan, Helen Chapman. ROW 2: Evelyn Fendley, Bobbie Bankston, Louise Flynt, Ruby Helen Simmons, Allyn Miller, Bill Strain, Pat Clarady, Myrt Hoda, Jo Ann McBay, Bonnie Jean Stamps. ROW 3: Charles Bates, Fritz Uher, Marshall Gilmer, Sam McCauley, P. J. Weiss, Noah Johnson, L. S. Dyess, Wallace Whatley.



Auto Mechanics



ROW 1: Mr. R. E. Cook, Mr. Harry Cuevas, Mr. W. A. Nelson, Mr. Hugh Shaw, Sam Broadus, Charles Spangler, Joseph Strawn, Wyatt Lee. ROW 2: Gail Weekly, T. B. Bond, Daffin Seal, Talman Hickman, John House, Huror Sanford, Clarence Goff, Louis Havens, Billy Webster, William Windham. ROW 3: Woodrow Martin, William Parker, Walter Breland, Wilber Reilly, Henry Breland, Hugh Lumpkin, Robert Brook, William Crowder, Leno Murphy. ROW 4: Butler Bullock, Guice Ladner, Cordell Anderson, William Sullivan, Stanley Janus, Bruce Jackson, Walter Beloso, Cull C. Davis, J. W. Strickland, Archie Brown.



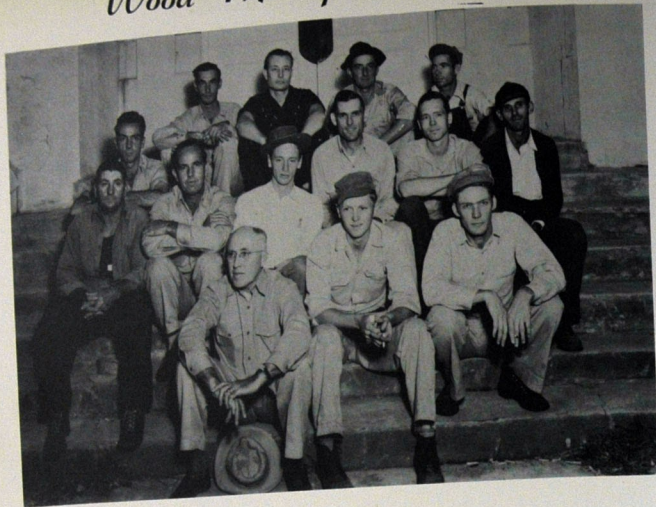
Auto Mechanics



ROW 1: Harold Bond, Leroy McQuinn, Herman Walker, Mr. R. W. Nelson, Fred Pressley, Elmer McKay, Mr. H. F. Cuevas, Berley Bell, Jim Daughdrill, Marcus Gowen, Donald Breland. ROW 2: Edbar McKay, Jeff Martin, Thomas Mayfield. ROW 3: Alvin Cuevas, Joe Ladnier, Buck Carroll, A. J. Palazzo, William Wade. ROW 4: Edward McDaniels, Freddie Pearson, Howard Lyons, Roland O'Neal, Hollis Hatten, Peter Breland, William Luchuck. ROW 5: Harold Broadus, George McMillen, Metril Taylor, Walter Price, Joe Page, Leroy Morris, Brawford Lott, Ray Magnon, John Stewart, Albrey Black, James Keys, Marzine Hester.



Wood Manufacturing Shop



ROW 1: Mr. W. D. Smith, Instructor, James Rayburn, Louis Slade. ROW 2: Noel Smith, Edgar Holland, Kenneth Parker, Roberson Hickman, Vincent Reeves, George Saucier. Row 3: J. E. Owens, Leroy Cuevas, Billy Breeland, Phillip James, Morgan Strawn.



Wood Manufacturing Shop



ROW 1: John Walters, Floyd Bounds, Hershel Landren, Mrs. J. C. Owens, Mr. W. D. Smith, Instructor, Otis Taylor, William Beasley. ROW 2: Curtis Parker, Carl Rath, J. N. Phillips, William Sivley, Hollis McKinney, W. W. Wilson, James Sauls, Robert Bowden, J. T. Fore. ROW 3: George Dearman, Herlan Hughes, T. D. Rayburn, Harold Louis, J. N. Fore, W. O. Richerson, Van Woods, James Battey, Tom Sumrall.



Radio Shop



ROW 1: Mr. E. L. Grayson, Instructor, D. C. Lee, Lonnie Bond, James Lee, Ford Turner, Lamar Bond, Willard O'Neal, William James, Rowan Bond.
ROW 2: Roosevelt Lawson, John Pugh, D. Y. Lee, Henry Hilderbrand, William Dearman, Albert Maloy, Hasten Palmer, Walter Clay.



W

H

O

S

"Holding higher the torch of learning"

"It's right to be taught even by a foe"

"There's Something About Remembering"

"Sometimes B Flat, Never B Sharp, Always B Natural"

"Up to the Top and Over"

I

W

H

O

*"When Youth and Pleasure meet
To Chase the glowing Hours with flying feet"*
—Byron

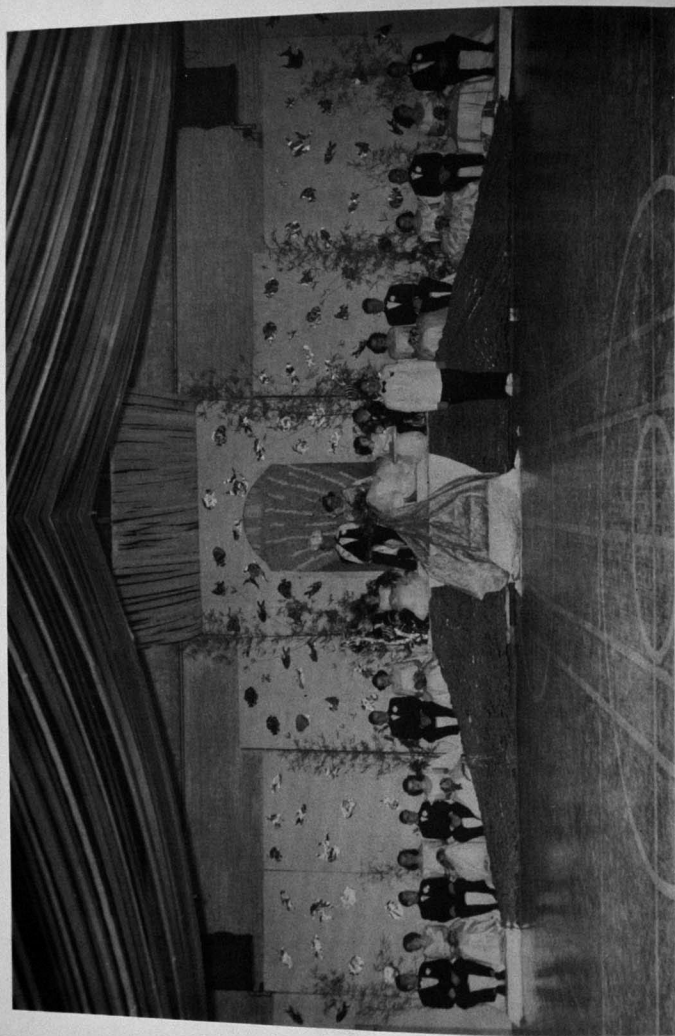


Their Royal Highnesses

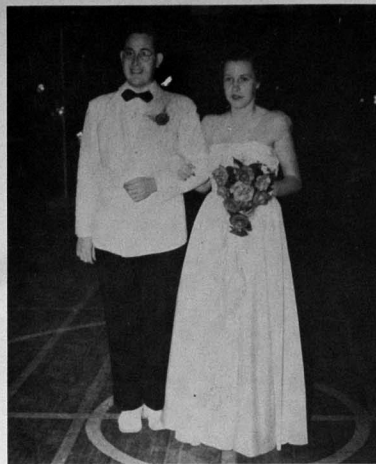
KING Bobby Bailey
 QUEEN Bobbie Nell Germany



Royal Dance



1950 Royal Court of The Annual Ball



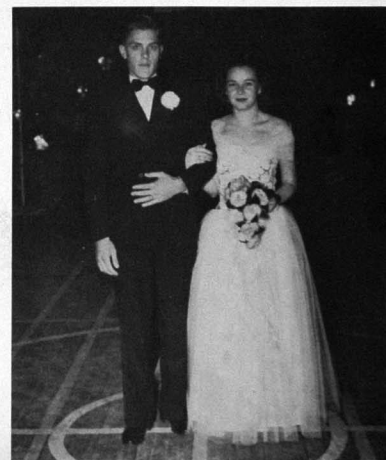
Captain

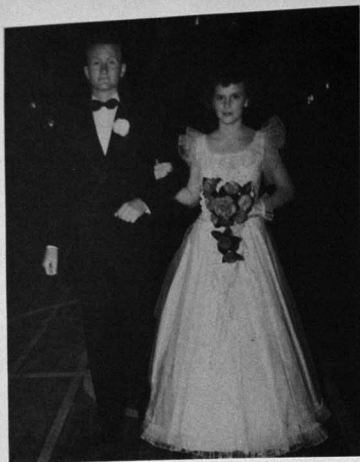
ALLYN MILLER

Duchess

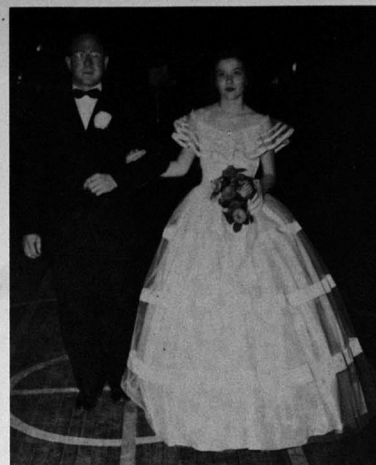
EVELYN WALKER

Duke
WALLACE GORDON
Duchess
MAXINE WHITE

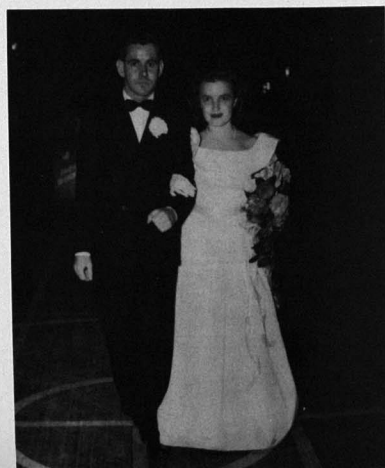




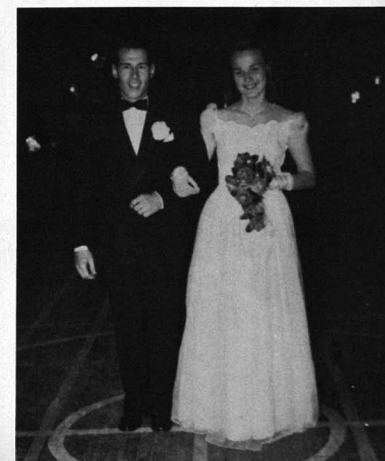
Duke
BILLY RAY GREGG
Duchess
BOBBIE NELL GERMANY



Duke
BYRD HOLLEMAN
Duchess
CAROLYN MARTIN



Duke
JACK STARR
Duchess
HELEN CHAPMAN



Duke
BOBBY GARDNER
Duchess
PATTI SPRUELL



Duke
JACOB JOHNSON
Duchess
SUE SARTIN



Page To The King
Nolan Tollett, Jr.
Maid To The Queen
Patricia Ware



Duke
THOMAS COMPTON
Duchess
MARY ALICE PRICE

Page To The King
Jack Perry
Maid To The Queen
Mary Ann Westerfield



Who's Who



Most Likely To Succeed

FLOYE O'NEAL
MICKEY LACEWELL

Most Intellectual

FLOYE O'NEAL
BILLY RAY GREGG



Most Sophisticated Sophomores

JIMMY FLANAGAN
OUIDA MURRAY



Best Dressed

BOBBY BAILEY
CAROLYN MARTIN





*Most Popular
Friendliest*

BOBBIE NELL GERMANY
JOE D'ANGELO



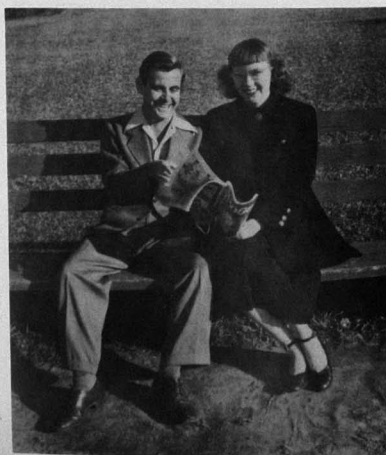
Most Beautiful

BOBBIE NELL GERMANY



Wittiest

JACK STARR
FLOYE O'NEAL



Handsome

SHANNON SLYFIELD





Cutest Couple

BETTY CLEVELAND
WALTER TURCOTTE



Best All Around

Best Athletes

MARY ELLEN BROWN
BUNYAN PIERCE



Cutest Girl
BOBBIE NELL GERMANY

Cutest Boy
CHARLIE WILSON



Most Talented

MELROSE SIMMONS
JIMMY FLANAGAN



104



106



107



Best Dancers

NORMA JUNE RANDOLPH
BOBBY GARDNER



Most Typical Freshmen

RONNIE EDMONDSON
BETTY CLEVELAND





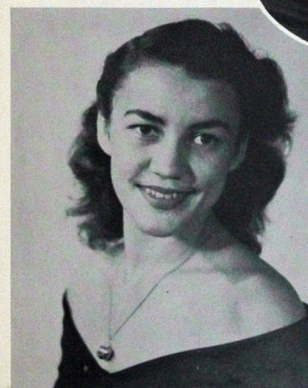
MARY ELSIE
PETERSON

HOMECOMING



BOBBIE JEAN
ADAMS

QUEEN



MYRA
DUNNAM

AND
COURT

ANNA BELLE JAMES



RAEBELL BOONE



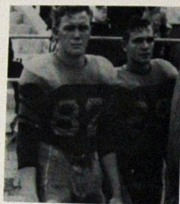
Concert



Myrt & Buddy



Get Gay for Homecoming Day



"They're a wonder"



Ruff! Ruff!



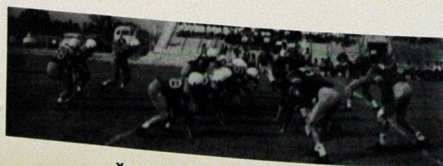
Crowning the Queen



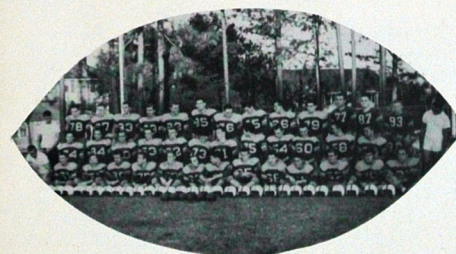
Have you registered?



Dedication

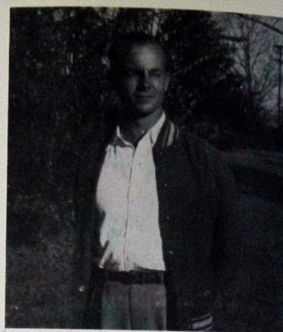


You made the touch downs; we made the noise





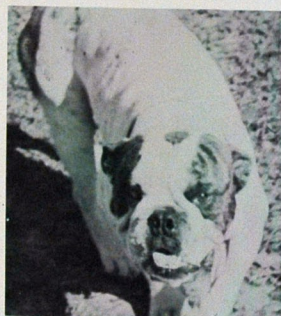
Nolan Tallett
Head Football Coach



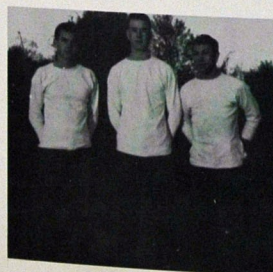
George Westerfield
Athletic Director, Basketball Coach
Track Coach, Ass't Football Coach



Joe Sala
Ass't Football Coach
Ass't Baseball Coach



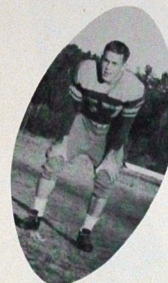
"Duke"
The Mascot



Charlie Bates, Richard Collins, Eddie Rubenstein



Ellzey Burch
Quarterback



Herbert Adams
Halfback



Fred Jones
Tackle



Tam Page
Center



Ashton Randall
Co-Captain
Fullback



Theodore Vlahos
Tackle



Bobby Gardner
Halfback



Spurgeon Lachaussee
End



Pat Allen
Tackle



Al Herbert
Halfback



Kirby King
Center



Douglas Boone
Guard



Zane Chastain
Quarterback



Freddie Borganelli
Halfback



Oliver Scott
Fullback



Joe Rucker
Halfback



Joe Matranga
Guard



Fred Alsop
Back



Manual McNeil
End



Leroy Urie
Guard



Roger Burges
Tackle



Martin Gendron
Back



Ed Evans
Co-Captain
End



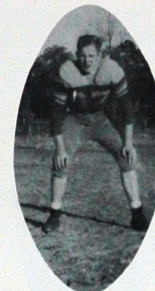
Marshall Gilmer
Tackle



Otis Shattles
Tackle



Billy Lynn Stewart
End



Jimmy Berry
Halfback



Raymond Waller
Guard



Billy Jo Fincher
Tackle



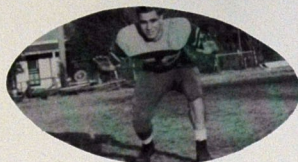
Thomas Compton
Center



James Boudwin
Guard



Albert Weaver
End



Ruben Baker
End



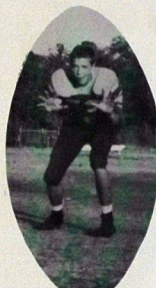
Sylton Cole
Guard



Marvin Pilgrim
Quarterback



Tom Ferrell
Fullback



Jacob Johnson
End



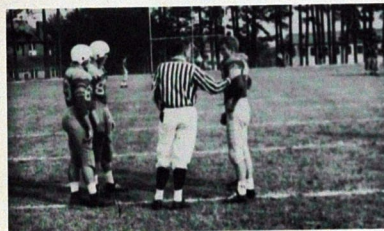
Arthur Bogdahn
Guard



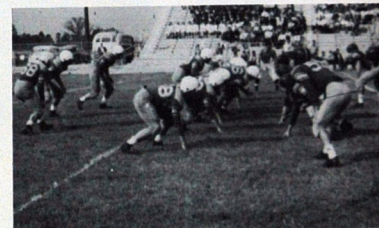
Charles Wilson
Center

The '49 Season

Perkinson.....	20	Ellisville	7
Perkinson.....	7	Goodman.....	27
Perkinson.....	13	Summit.....	13
Perkinson.....	27	Scooba.....	6
Perkinson.....	14	Raymond.....	13
Perkinson.....	12	Senatobia.....	0
Perkinson.....	21	Wesson.....	6
Perkinson.....	7	Poplarville.....	20
Perkinson.....	40	Boonville.....	15
Perkinson.....	20	Moorehead.....	0
Perkinson.....	21	Decatur.....	19



The toss before the game



Herb Adams going off guard



Holding that line



Al Herbert through the middle for a first down

Boys'



Ed



Phys



Norma
June
Randolph

Richard Yarborough

Head Cheerleader
Bobby Bailey

Betty Sue
Caldwell

Anna Belle
James

Tommy Berry

Patsy Byrne

Allen Bush

Women's Intramural Association



INTRAMURAL COUNCIL

President.....	Raebell Boone
Vice-President	Betty Davis
Secretary & Treasurer.....	Winona Rushing
Reporter	Floy O'Neal
Sophomore Representative.....	Ruby Helen Simmons
Freshmen Representative.....	Patti Spruell
High School Representative.....	Grace Gregory

INTRAMURAL ACTIVITIES

Volley ball	Horse shoes
Touch Football	Shuffleboard
Basketball	Badminton
Soft ball	Archery
Soccer	Table Tennis
Box Hockey	Tennis



The Puppies



The Poodles



The Amoebas



The Stray Dogs

W. I. A.



Elmer Bulls



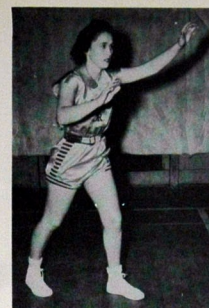
The Hornets



Eight Balls



Stool Pigeons



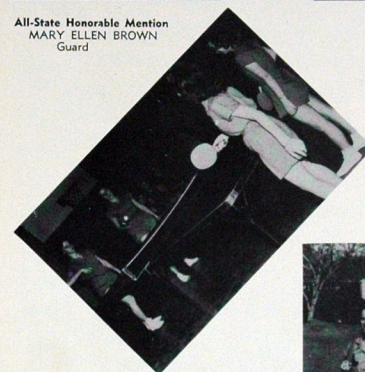
All-State Honorable Mention
MARY ELLEN BROWN
Guard



All-State Guard
BUNYAN PIERCE

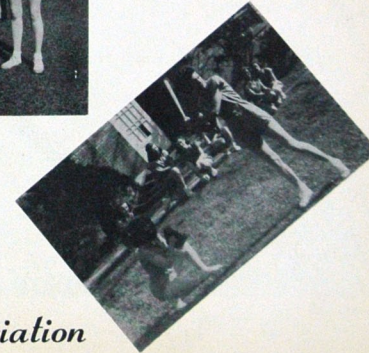


All-State Honorable Mention
RUBY HELEN SIMMONS
Forward



Women's

Intramural



Association

B
A
S
K
E
T
B
A
L
L

G
I
R
L
S



STANDING: Patti Spruell, Lillian Rouse, Florence Havens, Mary Ellen Brown, Dot Necaise, Coach Evelyn Prescott. SECOND ROW: Betty Jo Davis, Shirley Dean, Ruby Helen Simmons, Jenelle King, Beatrice Ellis.

B
A
S
K
E
T
B
A
L
L

B
O
Y
S



STANDING: Coach George Westerfield, Russell Beaulieu, Ruben Baker, Walter Breeland, Marvin Morgan, Sylton Cole, William Flowers, Coach B. T. Nash. SECOND ROW: Leon Davis, Robert Gordon, Joe Benny Rouse, Wallace Gordon, Bunyan Pierce.

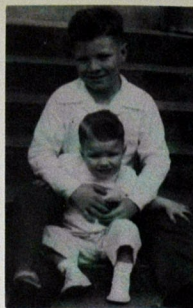


Emmy Jo & James Gammage

Stork



Alice Olsen



Lynn & David Blackwell



Stephanie Uher



Mary Ann Westerfield



Claude Perry



Jeannie Weniger



Julie Capuana



Jack & Lee Perry



Patricia Ann Ware



Kathy Capuana



Jeff T. Breland & Michael Cumbest

Club



Jerry Pennington



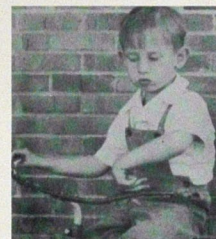
Dana Saia



Wade Hickman



Gene Fredricks



Michael Uher



Richard Tollett



Michael Clement



Johnny & Nolan Tollett



Ina Sue Gregory



Fredi Fredricks & L. C. Kennedy

**S
P
O
N
S
O
R
S**

COMPLIMENTS
OF

BEST WISHES
FROM

CONGRATULATIONS

COMPLIMENTS

Compliments
of

THROUGH THE COURTESY
of

"WE APPRECIATE YOUR PATRONAGE"



Good!
Made by blending
purest and finest
materials

Colonial
is good
Bread

Gulfcoast Engraving



- PHOTO ENGRAVING
- COMMERCIAL PHOTOGRAPHY
- ART WORK

ENLARGED HALFTONE

DAILY HERALD BLDG.
GULFPORT PH. 3875

richard a clarke

COMMERCIAL ART
LAYOUT • DESIGN
ILLUSTRATION
TYPOGRAPHY

636 LAMEUSE • BILOXI
DIAL 7331 FOR APPOINTMENT

A complete service



City Paper Company

"Everything in the Paper Line"

17th Street & I.C.R.R.

Owner: J. E. BAILEY

Gulfport, Mississippi

Compliments of

Stone Ice Cream Company

2215 - 14th Street

Gulfport, Mississippi



BROADWATER BEACH HOTEL

Hotel Cottages and Apartments

America's Finest

Located on U. S. Highway 90, 4 miles West of Biloxi, Miss. You are always welcome to visit us. For reservations phone Biloxi 4644 or Gulfport 2272. Write for new illustrated booklet giving full details.



Sitting Around

Anderson's Men's Store

Gulfport, Mississippi

"Style Store of the Coast"

THE DAILY HERALD

Gulfport - - - Biloxi

Congratulations, Perkinston Junior College
on the splendid educational facilities
afforded the young people of our section

Compliments of

MARKET STREET SERVICE STATION

W. E. STEPHENSON

Pascagoula, Mississippi

Coquet Furniture Company

107-109 East Howard Avenue

Biloxi, Mississippi

W. V. JOYCE COMPANY

"The Coast's Best Store"

Biloxi, Mississippi

For Women's Wear

Always Something New

—AT—
ROSENBLUM'S

Gulfport, Mississippi

GULF HILLS CLUB-HOTEL

Ocean Springs
The Coast's Most Complete Resort
18 Hole Golf Course - Horseback Riding

Compliments of
F. & A. CLEANERS

Phone 59 Wiggins, Mississippi



"Aw - - - No Sale"

Courtesy of

MISSISSIPPI POWER COMPANY

"A Civic Leader"



"Look, Miss Cooley!"

Hamilton Brothers

Appliances & Furniture

Phone 2246

Moss Point, Mississippi

THE TOWN MARKET

"The Home of Fine Foods"

Pascagoula, Mississippi

Compliments of

HAMILTON BROTHERS COMPANY

Wholesale and Retail

Heating - Plumbing - Sheet Metal - Roofing

13th Street

Gulfport, Mississippi

HAMILTON MOWER SUPPLY

P. O. Box 2

Power Mowers Sales & Service

Pure Oil Service

Ocean Springs

Mississippi

Compliments of

HOLLIE T. BOND
CHANCERY CLERK

Stone County

Mississippi

JOE SAVAGE'S

Compliments of

BRIGG'S FOOD STORE

Pascagoula

Mississippi

VAUGHAN JEWELRY STORE

"Gifts for all Occasions"

514 Main Street

Moss Point

Mississippi

WESTERN AUTO ASSOCIATE STORE

505 W. Howard

Phone 5133

Biloxi

Mississippi

PARAMOUNT RESTAURANT

"Fine Foods"

Downtown Gulfport

BREAZEALE FURNITURE & APPLIANCE

Frigidaire Appliances

Wiggins

Mississippi

A B C for the Coast

W G C M

GULFPORT

RITCHEY MOTORS, INC.

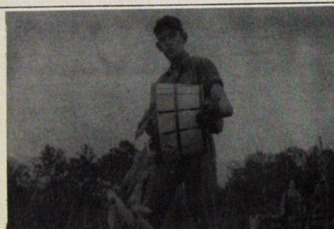
2200 - 15th Street

Gulfport, Mississippi

"Ride Right With Ritchey"

LINCOLN-MERCURY

SALES-SERVICE



Corn

Compliments of

DR. FRANK RUSSUM

Compliments of

WIGGINS DRUG STORE No. 4

Lincoln and Market Street

Pascagoula

Mississippi

THE COTTAGE BAKERY

THE KILLEBREWS, Owners

"Like Mother Bakes"

Phone 3358

817 W. Howard Avenue, Biloxi

Compliments

HAY'S VARIETY STORE

Moss Point

Mississippi



Hallowe'en Night

SERVICE LUMBER COMPANY

Building Materials

Corner 17th Street & 29th Ave.

PHONE 606

GULFPORT



Lookin' Down

O'Neal Electric Company

LIGHTING FIXTURES FANS

WIRING MATERIAL

"Electrical Contracting"

1416-25th Avenue

Phone 3355

Gulfport

Carter's

Furniture

Company

"The Home of Quality Merchandise"

1312-27th Avenue

Gulfport

Mississippi

M. T. Ford Motors

1812-25th Avenue

CHRYSLER-PLYMOUTH

Gulfport

Mississippi

Compliments of

Long Beach Drug Store

Long Beach

Mississippi

Moran's Insurance Agency

Phone 2911

Ocean Springs Lumber Co.

Phone 5131

Ocean Springs

Mississippi

TRILBY'S RESTAURANT

Specialties

Steaks Sea Food

Chickens Garlic Bread

Phone 5231

Ocean Springs, Mississippi

Breland & Hatten

Hardware

Pascagoula

Mississippi



The Gay Day

For a Complete Line of Ladies' Apparel

It's

S. J. Glass
1407 25th Ave.

Quality Merchandise at Truly Popular Prices

JOSEPH K. FASOLD

"Fine Jewelry Since 1917"

Gulfport

Mississippi

WOODS'

"The Store with the Goods"

Phone 3611

Moss Point

Mississippi

Compliments of

WESTERN AUTO

Phone 2001

Moss Point

Mississippi

For the Unusual in Gifts

"HOUKS"

Biloxi

BROUSSARD'S MUSIC SHOPPE

Pianos and Related Lines

1425 - 25th Avenue, Phone 3216 J

Gulfport

Mississippi

GRANT'S DRUG STORE

"Where Students Meet"

Biloxi

Mississippi

Compliments of

HILL FURNITURE STORE

Phone 2061

Moss Point

BAKER MOTOR COMPANY

Dealer in Fine Cars

14th Street & 22nd Avenue

Gulfport

Mississippi

Your "Personal Portraits" are
"Portraits with Appeal"

ARTHUR QUINN STUDIO

Phone 3174

Gulfport, Mississippi

1425 - 25th Avenue



"We Hate Men"

Legion Theatre

"Hollywood's Finest Productions"

Phone 413

27th Ave.

Gulfport

GULF COAST MUSICAL CENTER

Conn Band Instruments

315 W. Jackson Street

Dial 4515

Biloxi

ALLEN ELECTRIC COMPANY

Appliances Radios

Phone 3471

511 W. Howard Ave., Biloxi



Our Chapel

BURNHAM DRUG CO.

Walgreen Agency

Moss Point, Miss.

BRADFORD FUNERAL HOME

Biloxi, Mississippi

Ambulances

Burial Insurance

Dial 7814



Free Chow

All Types Phonograph Records

Classical To Hillbilly

R.C.A. VICTOR - ZENITH

Radios & Phonographs

ZOLLMAN'S

Music & Radio Shop

1307-26th Ave.

Gulfport



"Mighty Fine"

AUGUST TREMMEL & SON

Roofing and Sheet Metal

Water and Croesus
Phone 4381

Biloxi

Mississippi

Compliments of

J. C. CLOWER FURNITURE COMPANY

"The Furniture Men"

Gulfport, Mississippi

BARQ'S



HANCOCK BANK

Bay St. Louis
Strength

Gulfport
Stability

Pass Christian
Integrity

Member of Federal Deposit Insurance Corp.

ALLBROOK FISHERIES

Phone 3006
Gulfport

West Pier
Mississippi

French Fried Shrimp

"They are good"
Myrt, Allyn, Bobby, Anna Belle

PASTIME CAFE

"Famous for its Sea Foods"

Steaks

Chicken

111 West Beach Blvd., Biloxi, Miss.

"On the Beach"

Phone 155



Chalk One Up!

THE MERCHANTS CO. of Mississippi and Louisiana

WHOLESALE GROCERS

Jackson - Hattiesburg - Gulfport, Miss.

Bogalusa

Louisiana



Name — Address — Telephone Number

Compliments of MAIN STREET SERVICE STATION

Moss Point

Miss.

ECHOLS AUTO PARTS

1317 - 28th Ave.

Phone 3810-3811

Gulfport

Mississippi

W. J. HODA General Electrician

Rt. 2, Box 37

Phone 2874-J

Gulfport

Miss.

Compliments of W. H. NELSON, JR. Pontiac

Moss Point, Miss.



Well, Well, Well!



Come in,
loungue around and
meet your friends

THE COLLEGE CENTER

The Student's Complete Store

A Complete Line of

Sandwiches
Dairy Products
Ice Cream
Cookies - Crackers
Cosmetics
Novelties

Tobacco
Cigars
Drugs
Toilet Articles
Magazines
School Supplies

All priced within
the student's budget



Double (shotgun ring) Wedding

COAST ROOFING and SHEET METAL, Inc.

1325 - 28th Ave.

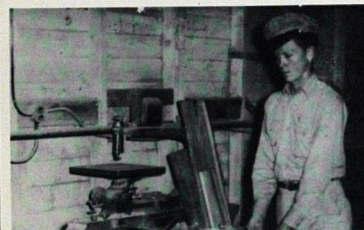
Phone 330

Gulfport, Miss.

Compliments of

LANDER FOOD STORE

Moss Point, Miss.



Job Well Done

ECONOMY CASH GROCERY

Groceries, Feed, Gas, Oil

H'way 49 — Gulfport

C & D AUTO PARTS CO.

1800 - 25th Ave.

WHOLESALE

Phone 2238

Gulfport, Mississippi



Gulfport, Mississippi

Compliments of MRS. BELL

Moss Point

GULF T ROOM



Marrying Sam

Compliments of

THE SOUTHERNER RESTAURANT

Gulfport, Mississippi

TOWER LOAN BROKERS

HENRY H. LEGETT, Owner

Real Estate Loans - Installment Financing
Discounting

P.O. Box 1009

Gulfport, Mississippi



Working on it

MERCHANTS & MARINE BANK OF PASCAGOULA

PASCAGOULA MISSISSIPPI MOSS POINT

Compliments of

Jones Brothers' Drug Company

"Serving the Coast"

Gulfport, Mississippi



STAR CHEVROLET COMPANY

P.O. Box 6

Wiggins, Mississippi

M. SALLOUM'S DEPT. STORE

14th Street

Gulfport, Mississippi

ROSEBLUMES

Fashion Center for Women

Pascagoula, Mississippi

Compliments of

CATCHOTS' GROCERY & MARKET

Phone 3071

Ocean Springs, Mississippi

Opposite Great Southern Hotel
2502 - 13th Street

VOGUE BEAUTY SHOP

"For Women Who Care"

Phone 720

Gulfport, Mississippi

SEW AND SAVE FABRIC SHOP

Measuring Quality in Fabric

1409 - 26th Ave.

Gulfport, Mississippi

**COMBEL'S
APPLIANCE STORE**

916 W. Howard Avenue

Dial 6752

Biloxi

Compliments of

CRYSTAL ICE COMPANY

Gulfport — Mississippi — Handsboro

THE ELITE SHOP

Ladies' Wearing Apparel

Phone 414 — 2418 - 14th Street

Gulfport

Mississippi

Compliments of

STEELMAN FOOD STORE

26 Government Street

Phone 4681

Ocean Springs, Mississippi

SNYDER LAUNDRY SERVICE

LAUNDRY AND DRY CLEANERS

"Odorless Dry Cleaning"

Phone 4966

Ocean Springs

Phone 7104

Biloxi



EDDIE'S DRUG STORE

Biloxi, Mississippi

JAMES' GARAGE

Gas - General Repairs - Oil

Highway 49

Gulfport

GULF PAINT & GLASS CO., INC.

Gulfport, Mississippi

BACOT & FRAZIER

General Insurance

264 Delmas Ave
Pascagoula

Phone 1350
Mississippi

Gulfoto

Cameras • Films

Photo Supplies

Biloxi Gulfport

GOTTSCHÉ'S

"Fine Foods Since 1910"

Ocean Springs, Mississippi

STONE COUNTY ENTERPRISE

"Covers the Country"

Wiggins, Mississippi



GRANT'S DRUGS
WALGREEN AGENCY

"You're Always Welcome at Grant's"
Gulfport, Mississippi

Compliments of
DOMINIC FALLO

[illegible]